

As. Oy Espoon Eteläviitta

# Huoneisto- ja kerrospohjat

ALK	alkovi
ET	eteinen
K	keittiö
KHH	kodinhuone
KPH	kylpyhuone
KT	keittotila
KÄY	käytävä
MH	makuuhuone
MT	makuutila
OH	olohuone
PH	pesuhuone
S	sauna
VH	vaatehuone
TH	työhuone
PARV.	parveke

 liesitaso, uuni ja liesikupu


 tiskiallas ja hana

 astianpesukone tason alla

 mikroaaltouuni

 jääkaappi, pakastin

 jääkaappipakastinyhdistelmä


 uuni ja mikroaaltouuni päällekkäin samassa kalusteessa

 ryhmäkeskus

 jaettu siivous-/pyykkikaappi


 siivouskaappi

 pyykkikaappi

 hyllykaappi


 tankokaappi

 yläkaappi alkovissa

 lattiaan asennettu jakotukki

 SJ liukuovellinen säilytysjärjestelmä

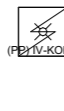
 wc-istuin

 lavuaari, allaskaappi, tasopeili, hana ja käsisuihku

 suihku

 kääntyvä suihkuseinä

 sähkökiuas

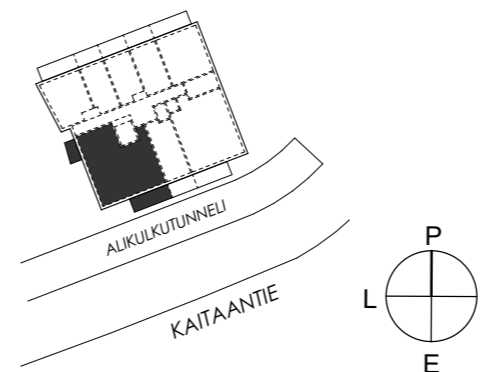
 tilavaraus pesukoneelle ja kuivausrummulle, päällä huoneistokohtainen ilmanvaihtokone

 tilavaraus kuivausrummulle tason alla

 viilennysyksikkö

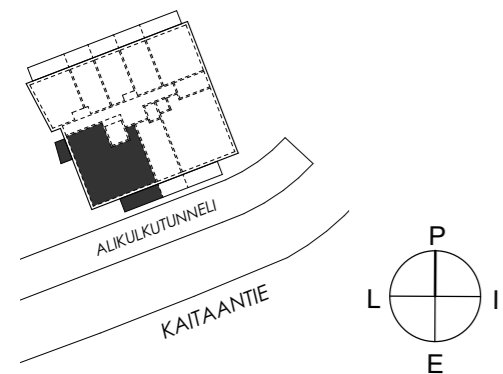
**5H+KT+S 108,5 m<sup>2</sup>**

A123 15. krs



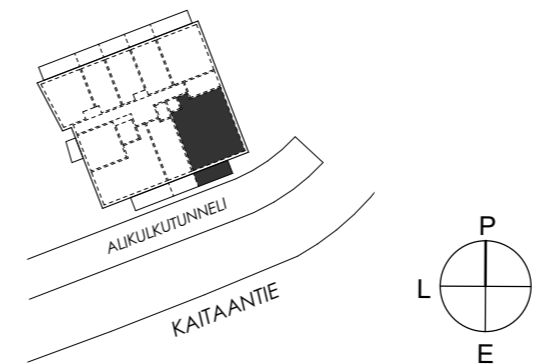
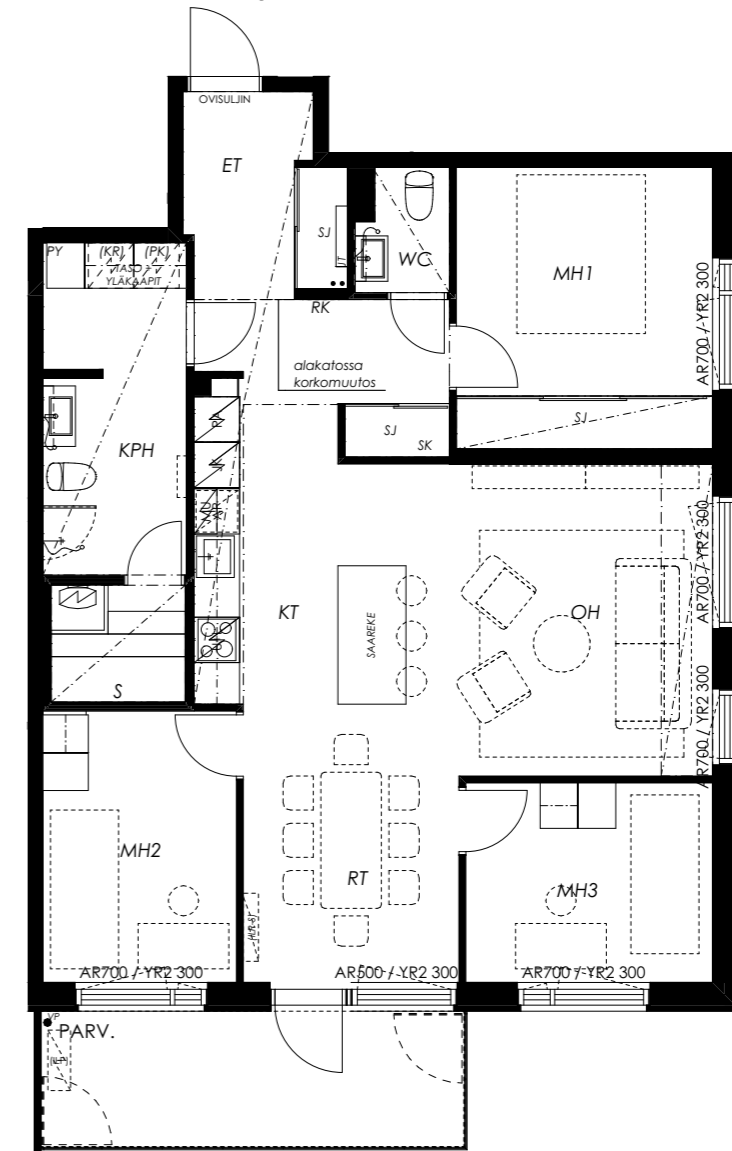
# 5H+KT+S 108,5 m<sup>2</sup>

A131 16. krs



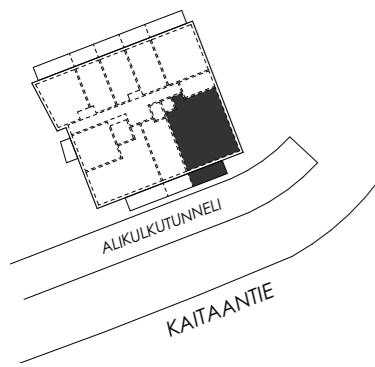
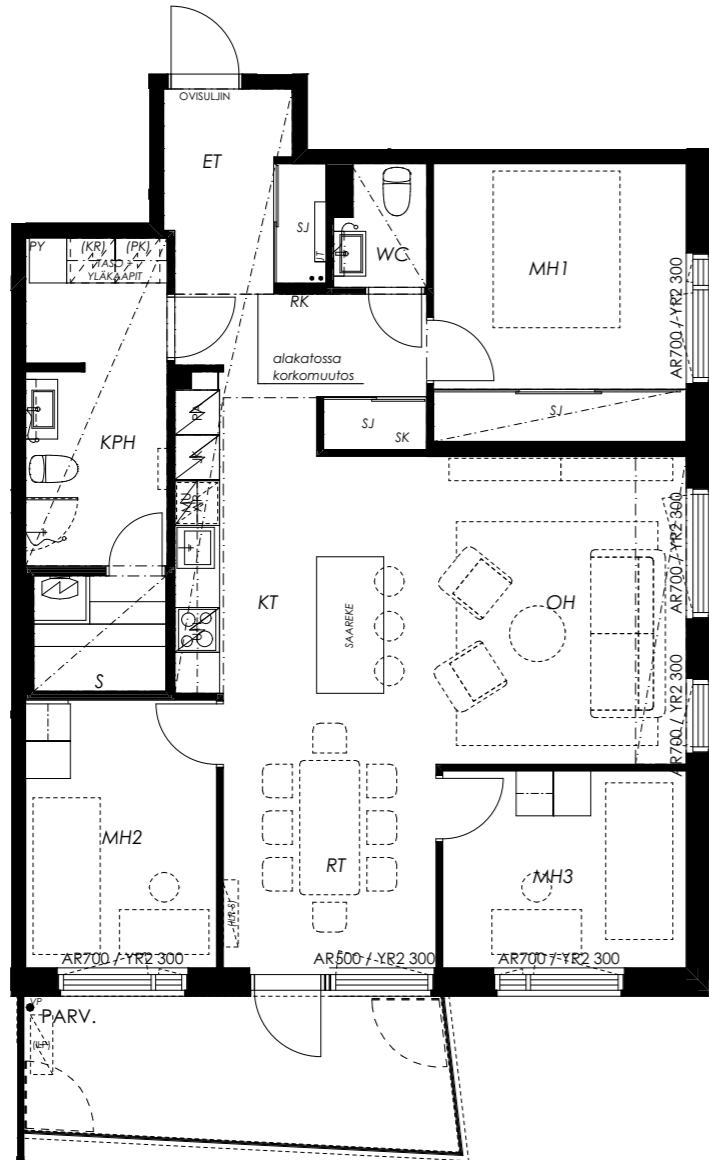
# 4H+KT+S 94,5 m<sup>2</sup>

- A81 10. krs
- A90 11. krs
- A99 12. krs
- A108 13. krs



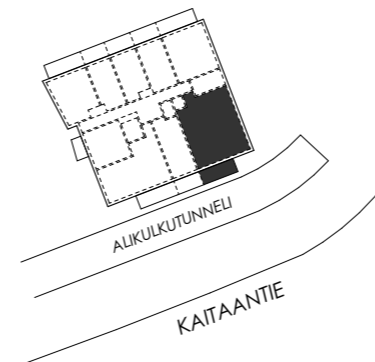
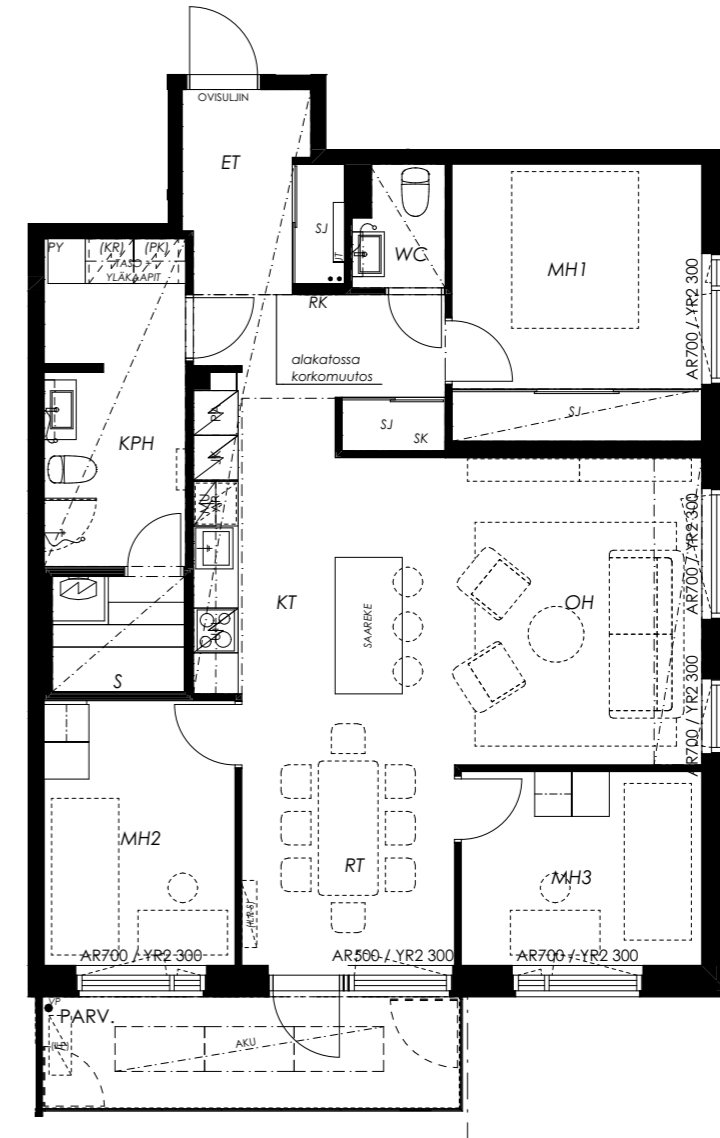
# 4H+KT+S 94,5 m<sup>2</sup>

A117 14. krs  
A125 15. krs  
A133 16. krs



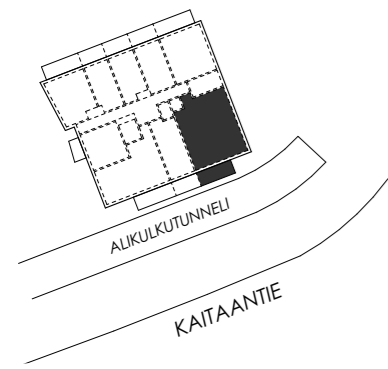
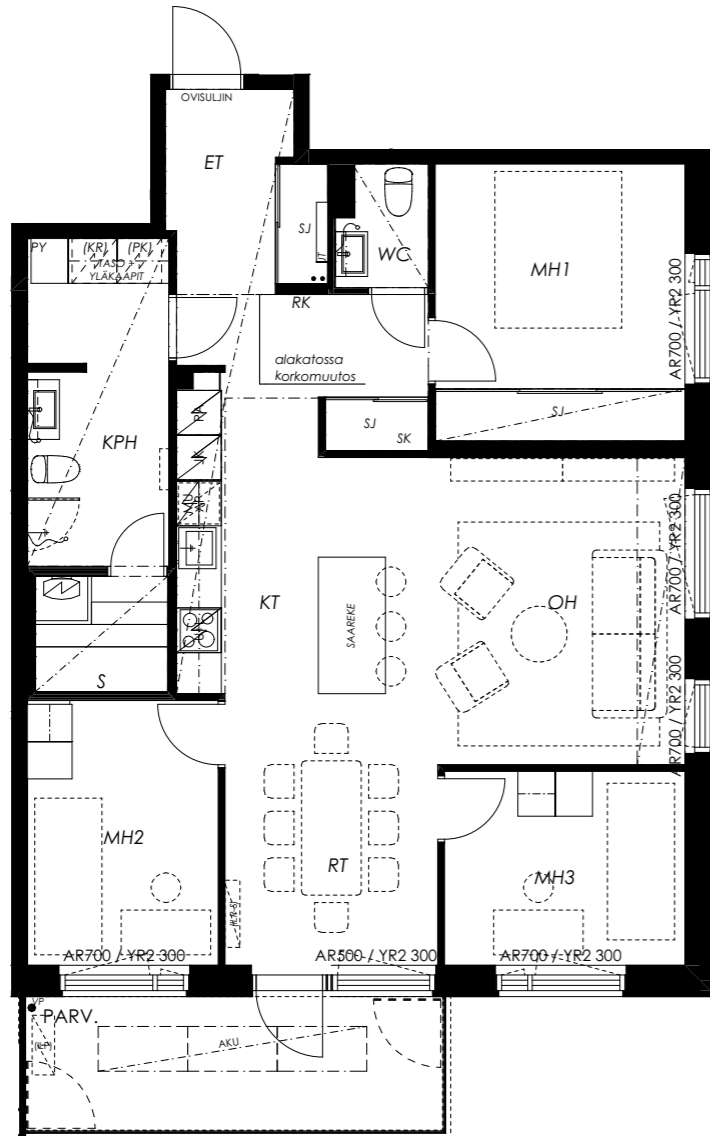
# 4H+KT+S 93,5 m<sup>2</sup>

A18 3. krs



# 4H+KT+S 93,5 m<sup>2</sup>

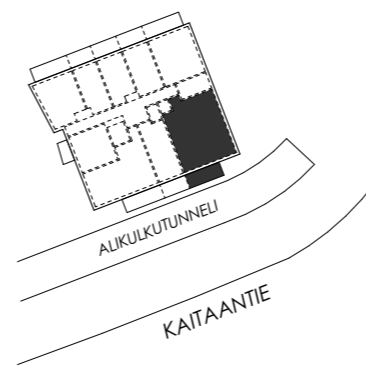
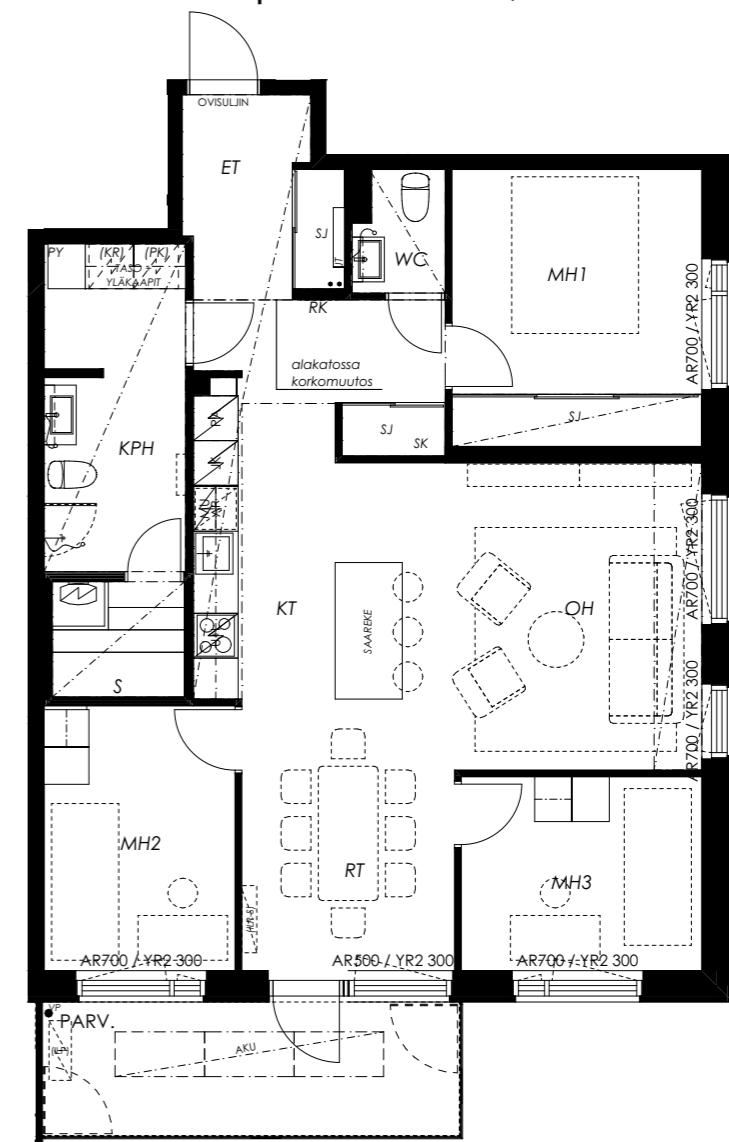
A27 4. krs



# 4H+KT+S 93,5 m<sup>2</sup>

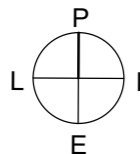
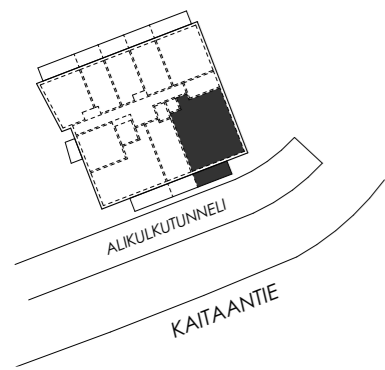
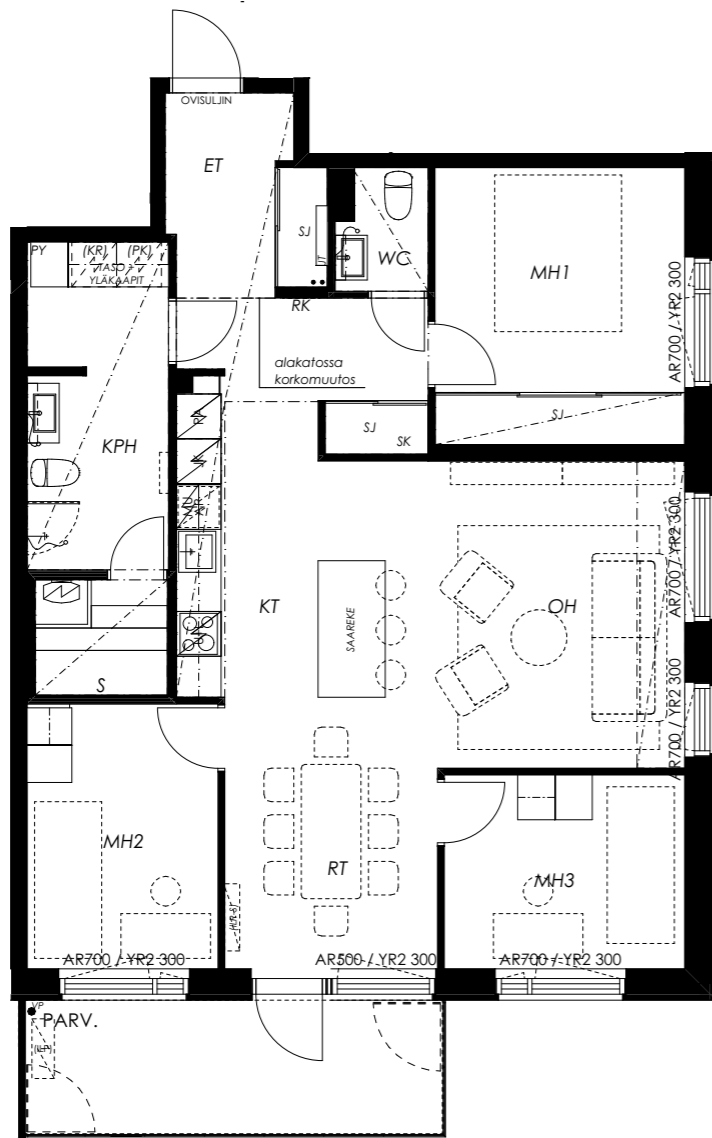
A36 5. krs

A45 6. krs



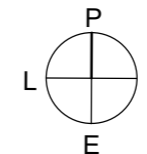
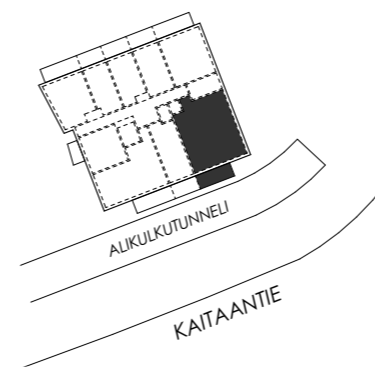
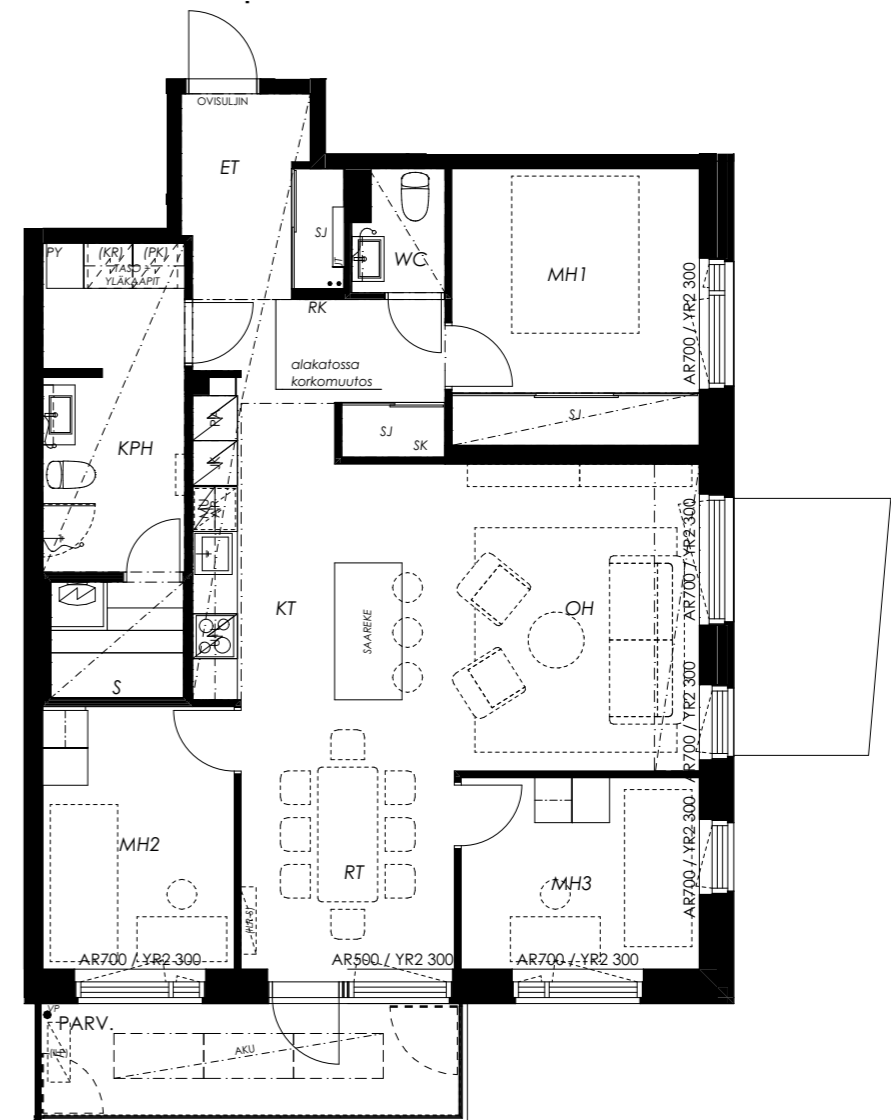
### 4H+KT+S 93,5 m<sup>2</sup>

- A54 7. krs
- A63 8. krs
- A72 9. krs



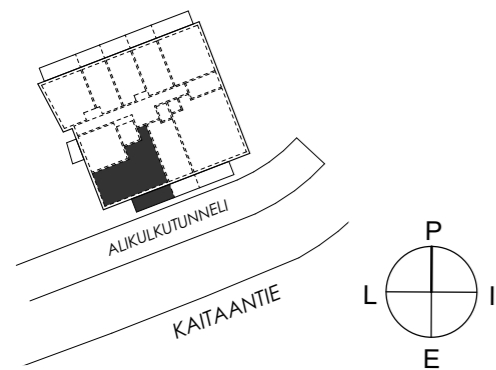
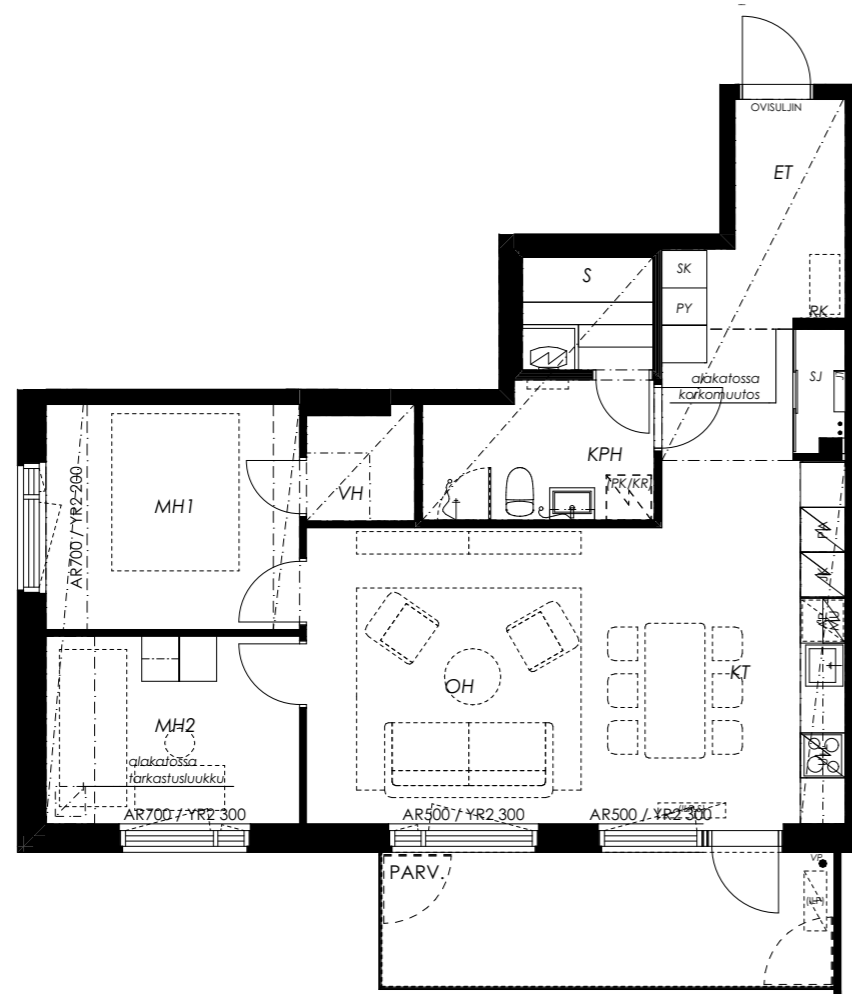
### 4H+KT+S 92,5 m<sup>2</sup>

- A9 2. krs



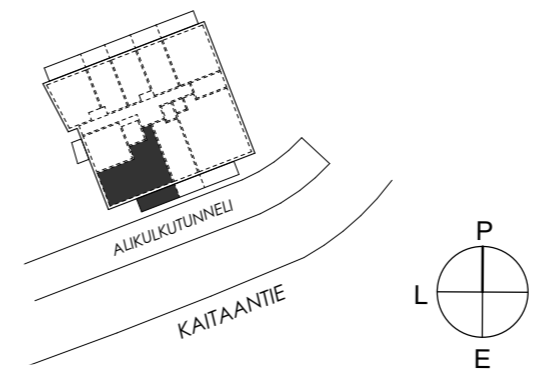
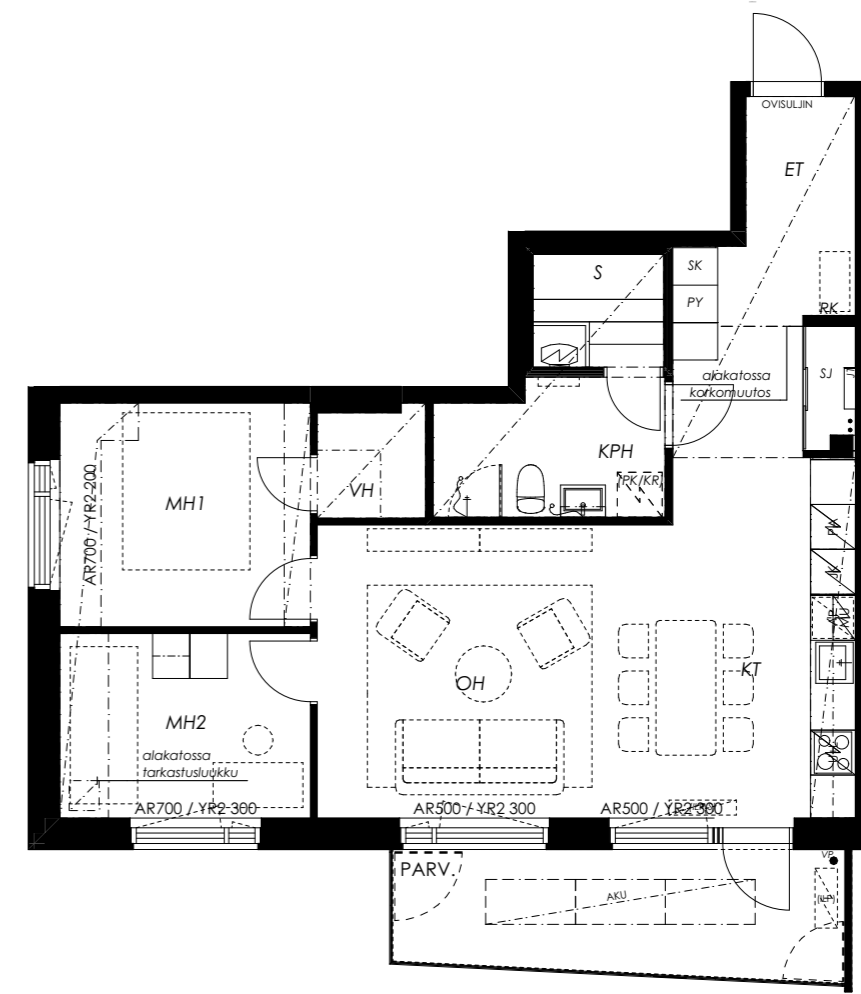
### 3H+KT+S 72,5 m<sup>2</sup>

- A79 10. krs
- A88 11. krs
- A97 12. krs
- A106 13. krs
- A115 14. krs



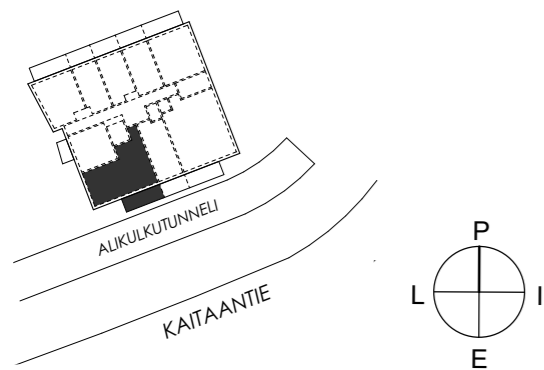
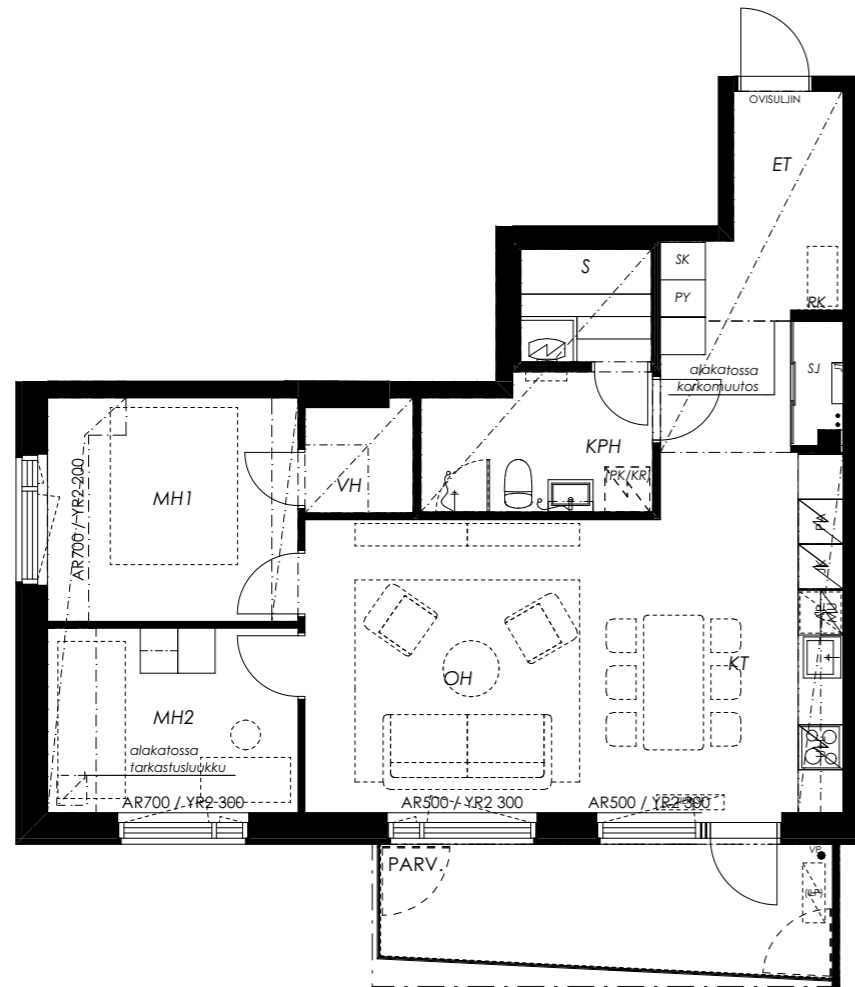
### 3H+KT+S 71 m<sup>2</sup>

- A16 3. krs
- A25 4. krs
- A34 5. krs
- A43 6. krs



### 3H+KT+S 71 m<sup>2</sup>

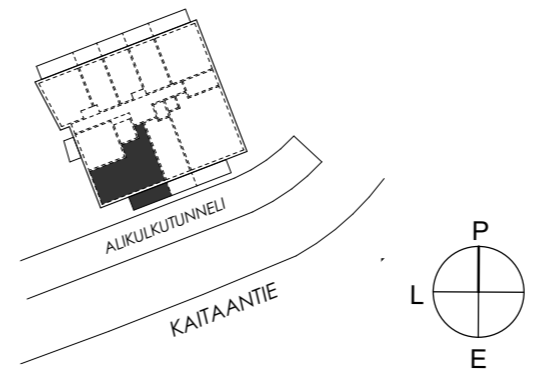
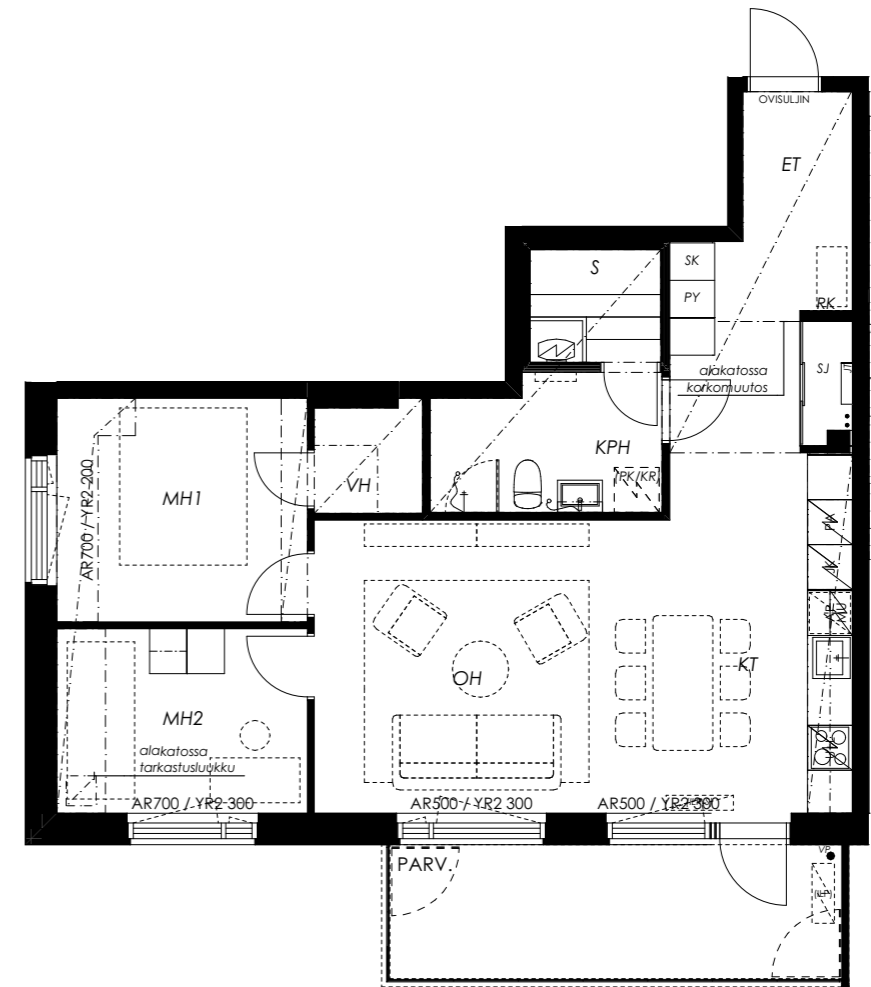
A52 7. krs



### 3H+KT+S 71 m<sup>2</sup>

A61 8. krs

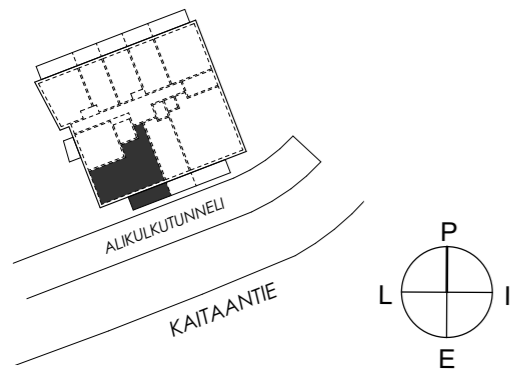
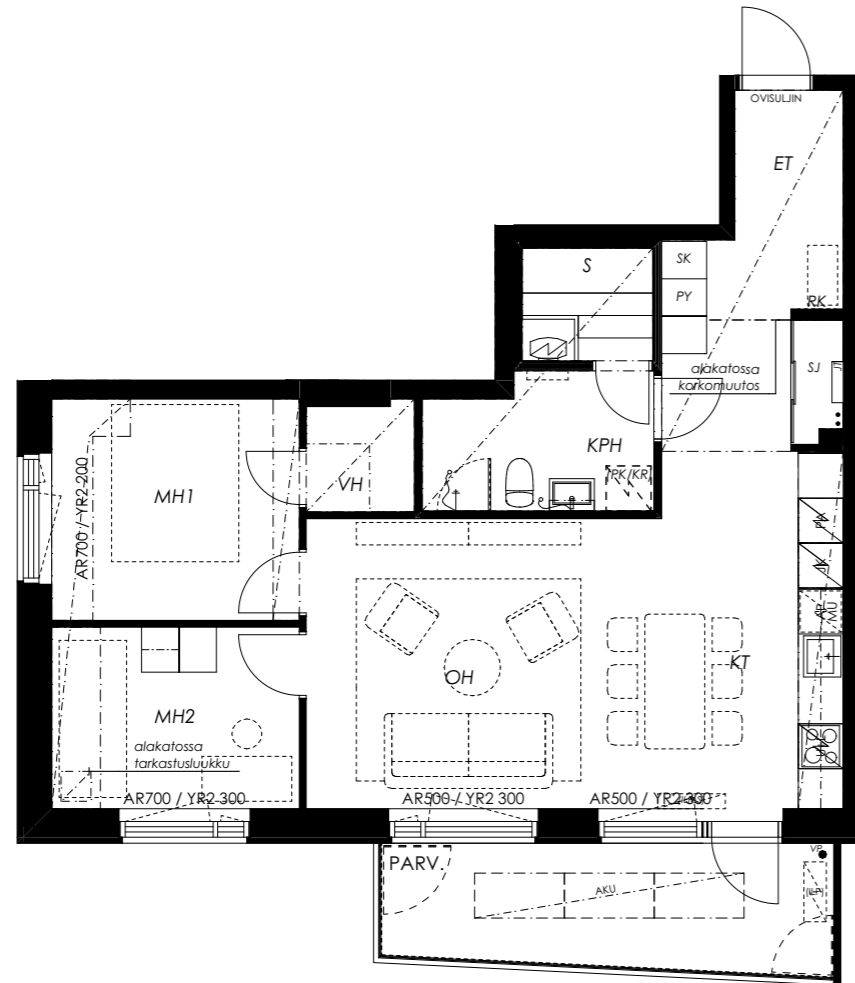
A70 9. krs





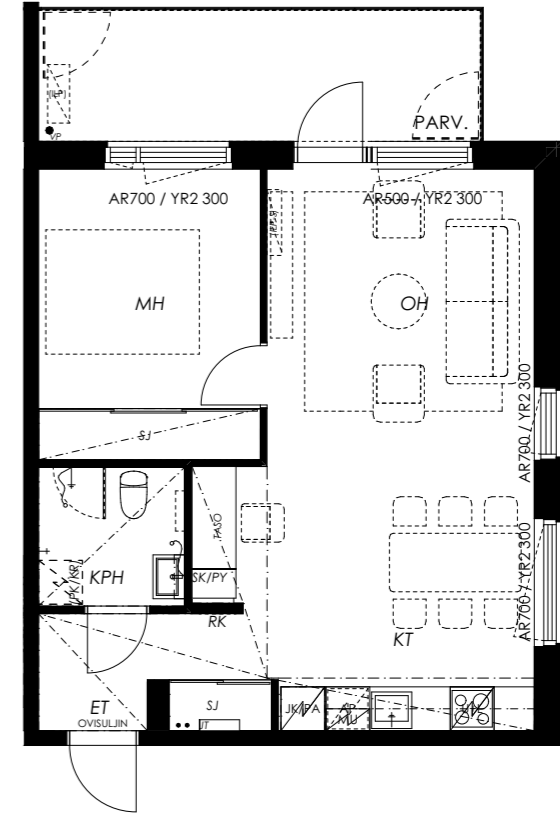
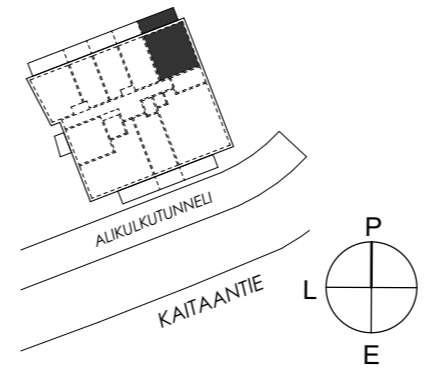
### 3H+KT+S 70 m<sup>2</sup>

A7 2. krs



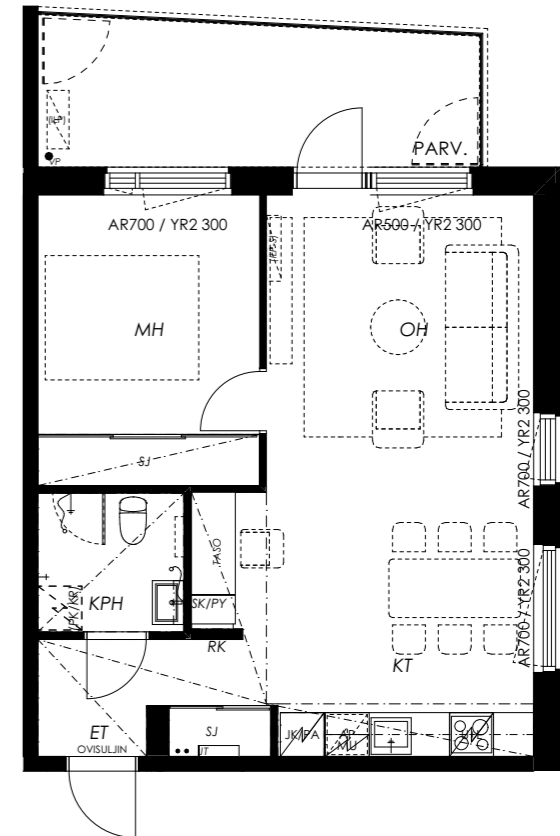
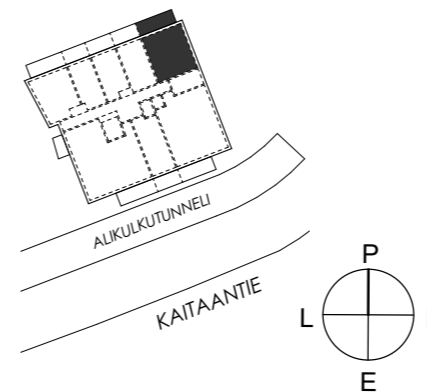
### 2H+KT 52 m<sup>2</sup>

- A73 10. krs
- A82 11. krs
- A91 12. krs
- A100 13. krs
- A109 14. krs



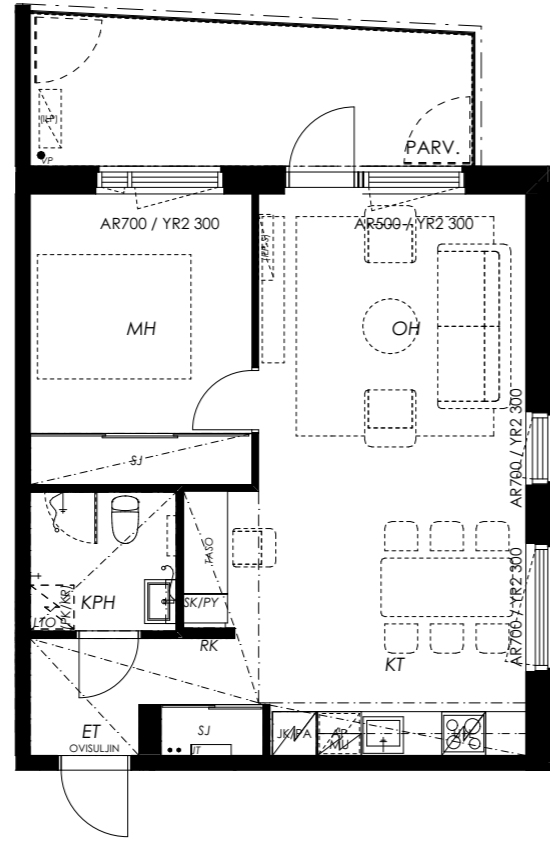
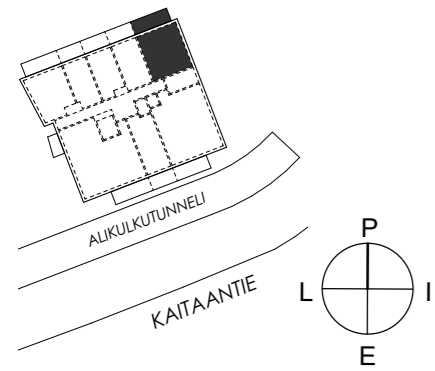
### 2H+KT 52 m<sup>2</sup>

- A118 15. krs



**2H+KT 52 m<sup>2</sup>**

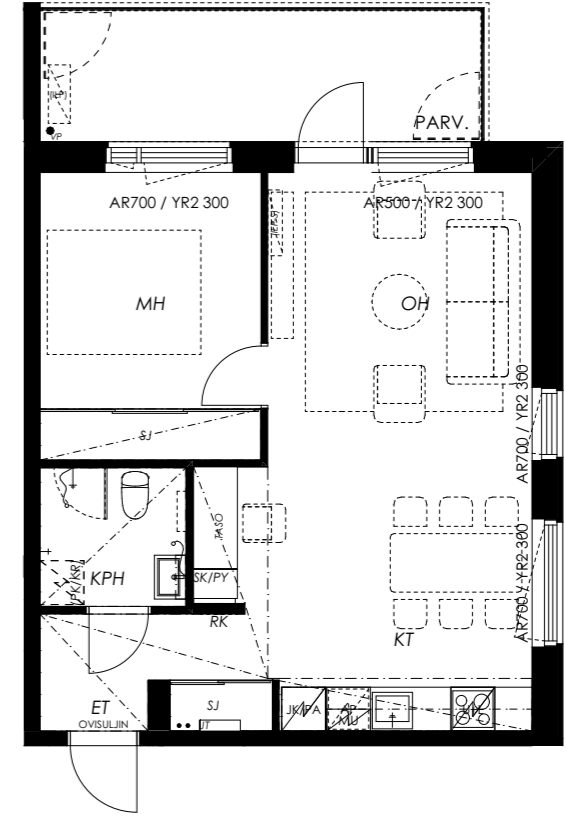
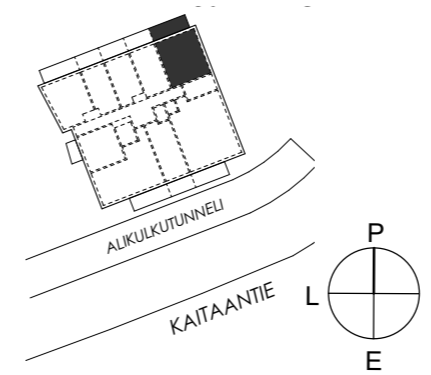
A126 16. krs



**2H+KT 51 m<sup>2</sup>**

A55 8. krs

A64 9. krs



**2H+KT 51 m<sup>2</sup>**

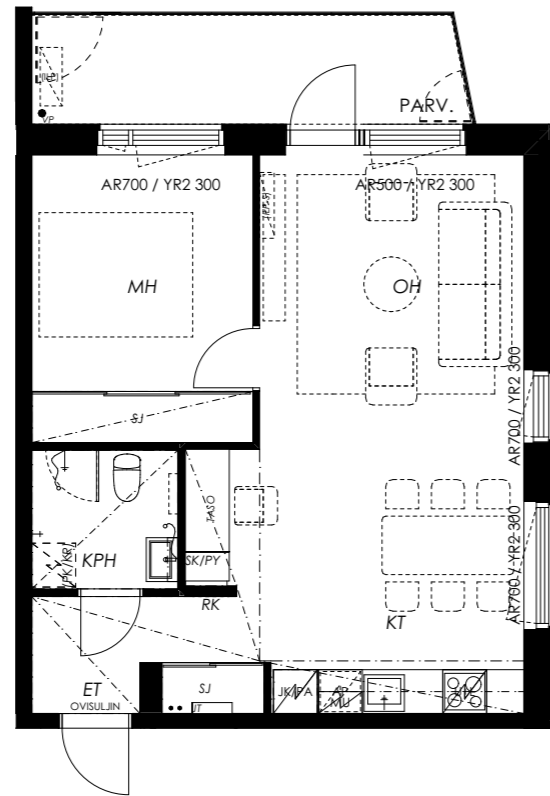
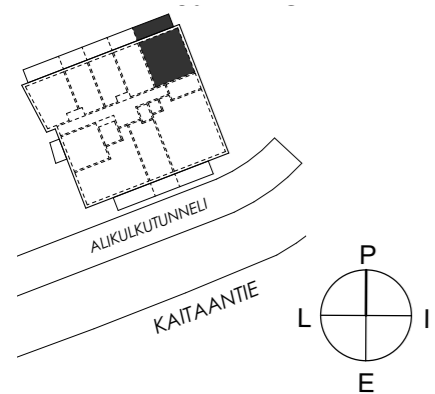
A10 3. krs

A19 4. krs

A28 5. krs

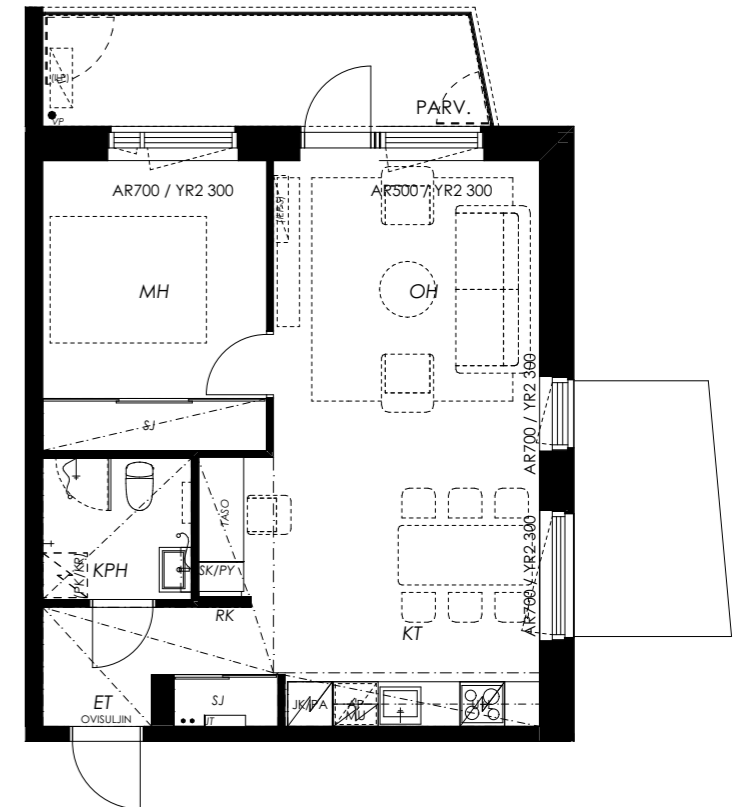
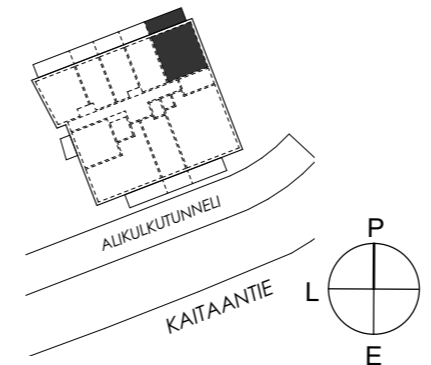
A37 6. krs

A46 7. krs



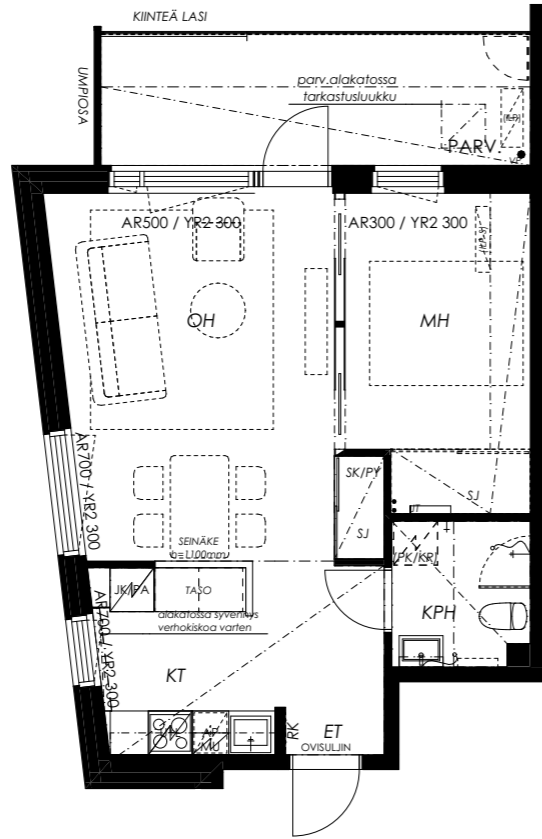
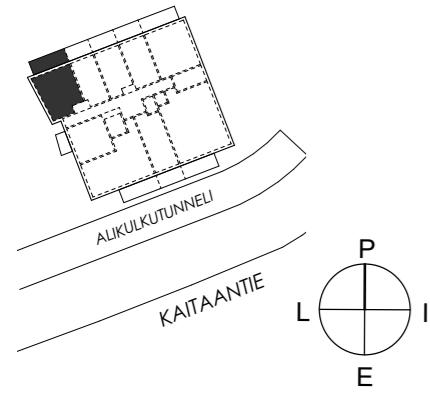
**2H+KT 50,5 m<sup>2</sup>**

A1 2. krs



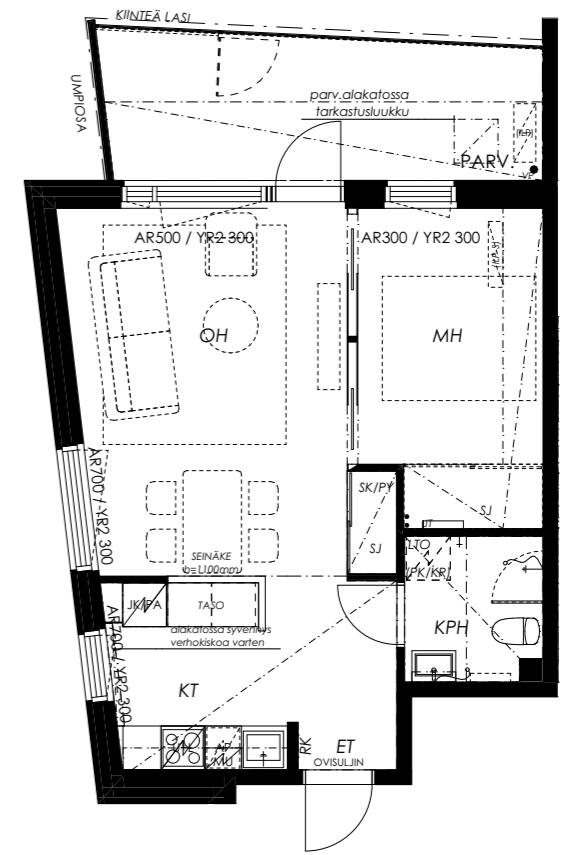
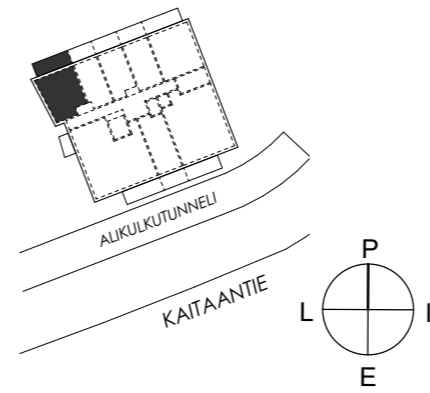
**2H+KT 45,5 m<sup>2</sup>**

- A77 10. krs
- A86 11. krs
- A95 12. krs



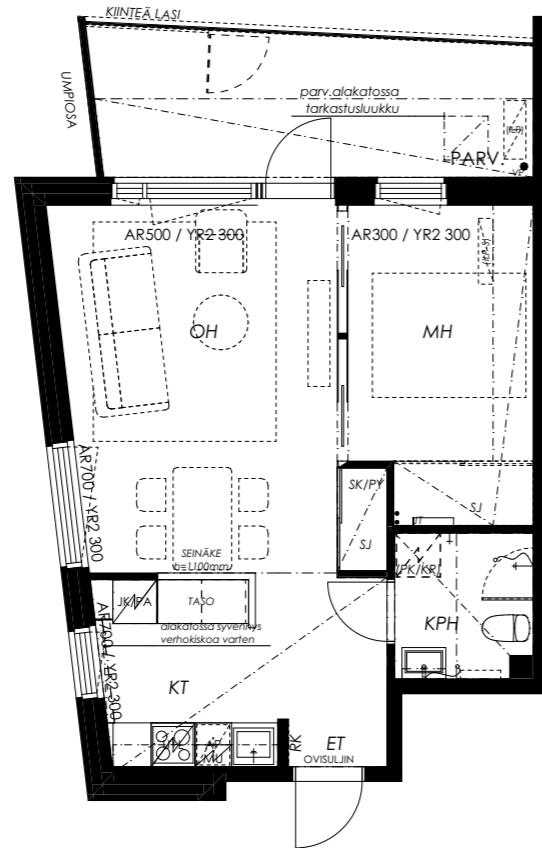
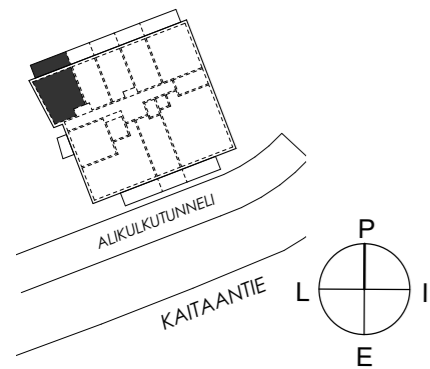
**2H+KT 45,5 m<sup>2</sup>**

- A130 16. krs



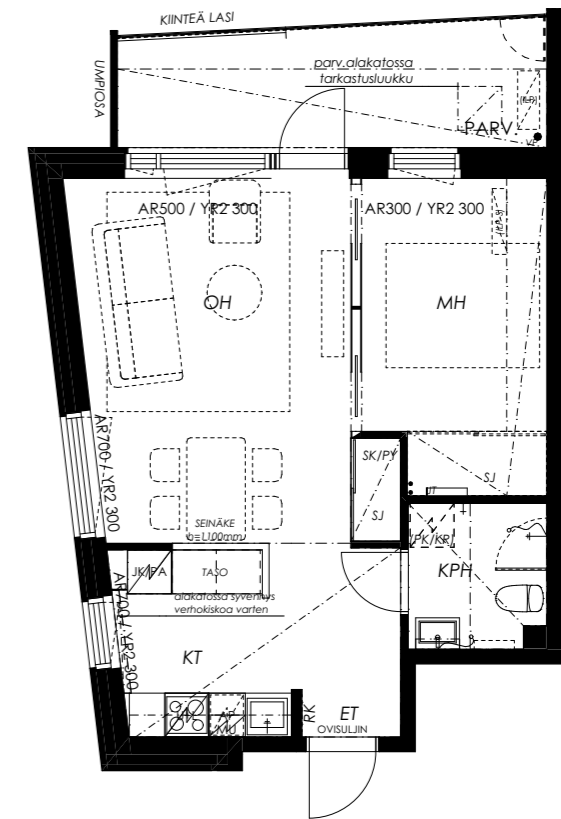
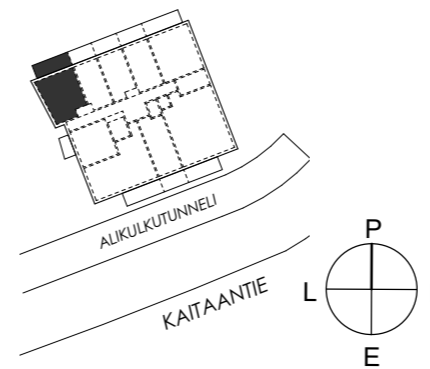
**2H+KT 45,5 m<sup>2</sup>**

- A104 13. krs
- A113 14. krs
- A122 15. krs



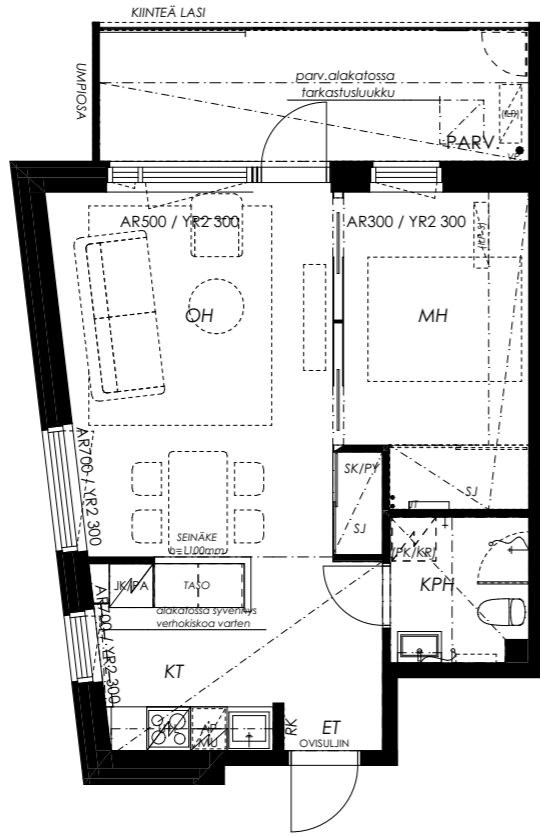
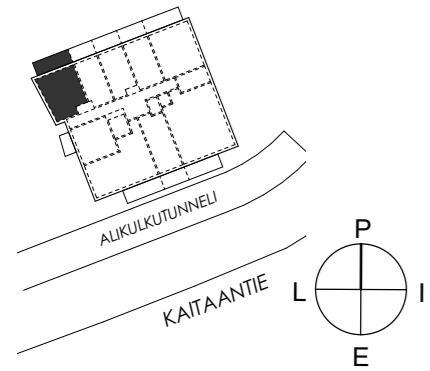
**2H+KT 44,5 m<sup>2</sup>**

- A14 3. krs
- A23 4. krs



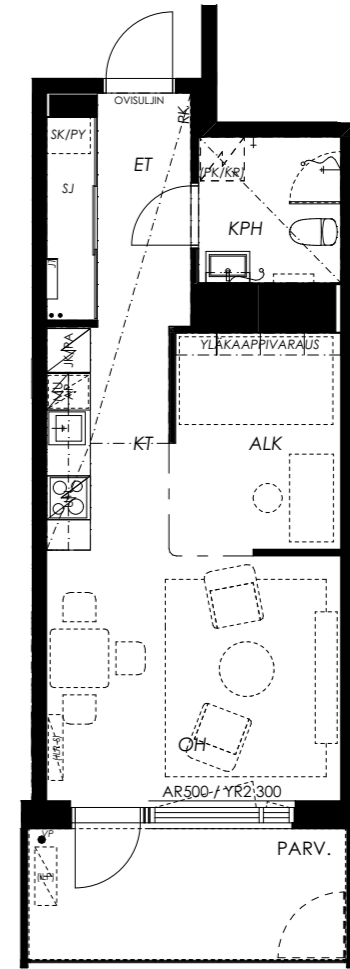
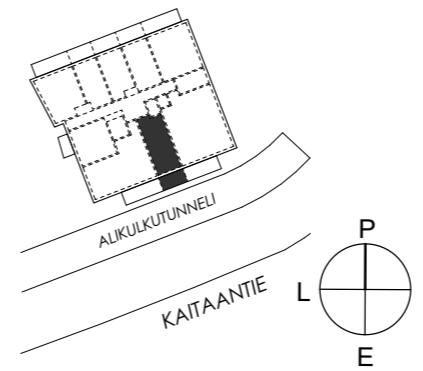
**2H+KT 44,5 m<sup>2</sup>**

- A32 5. krs
- A41 6. krs
- A50 7. krs
- A59 8. krs
- A68 9. krs



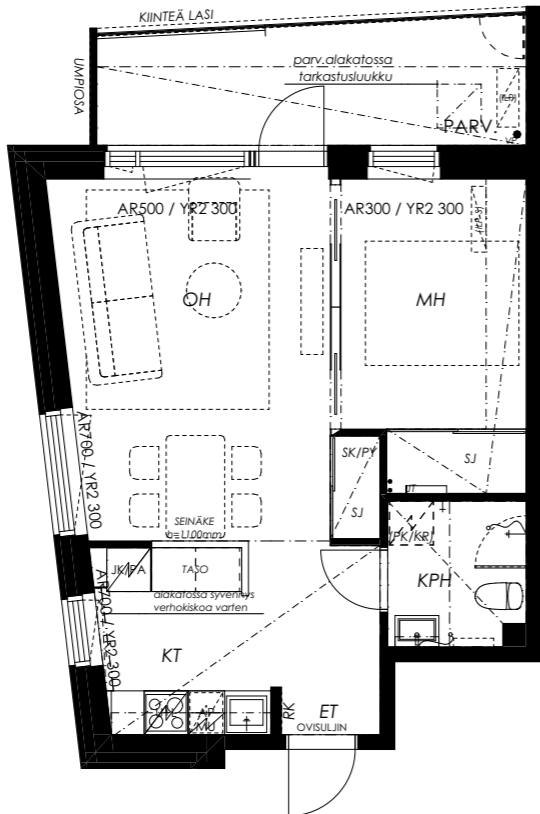
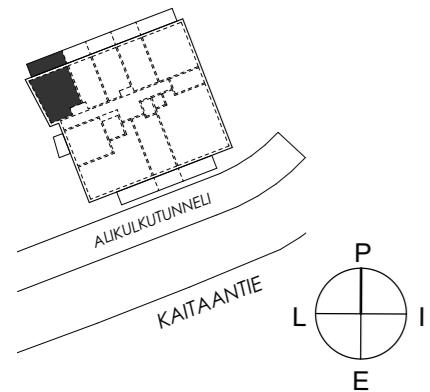
**1H+KT 36,5 m<sup>2</sup>**

- A80 10. krs
- A89 11. krs



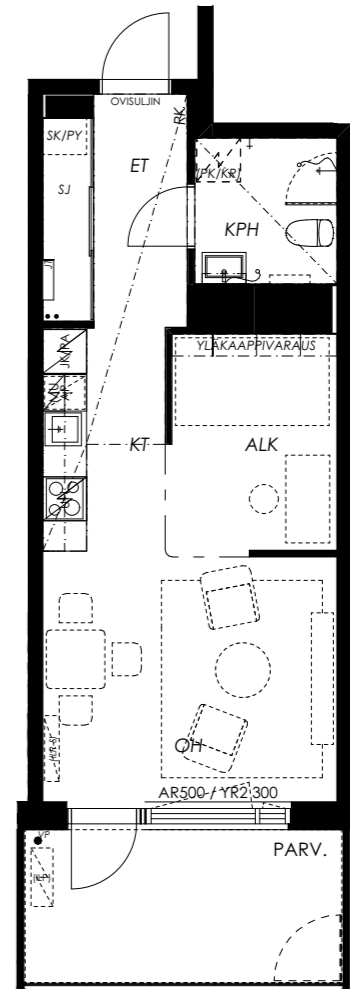
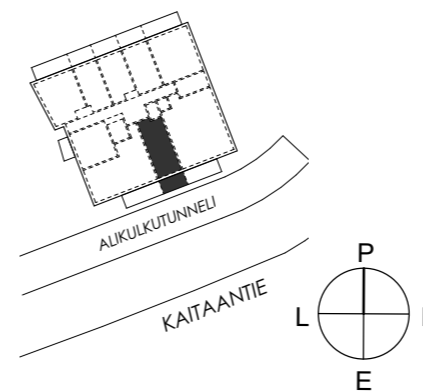
**2H+KT 44 m<sup>2</sup>**

- A5 2. krs



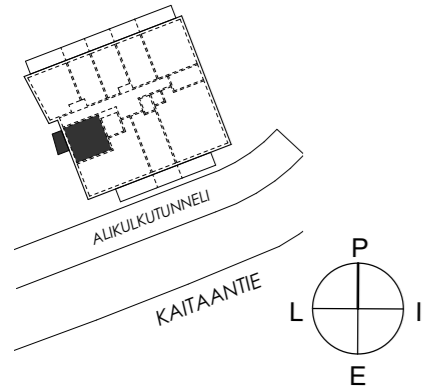
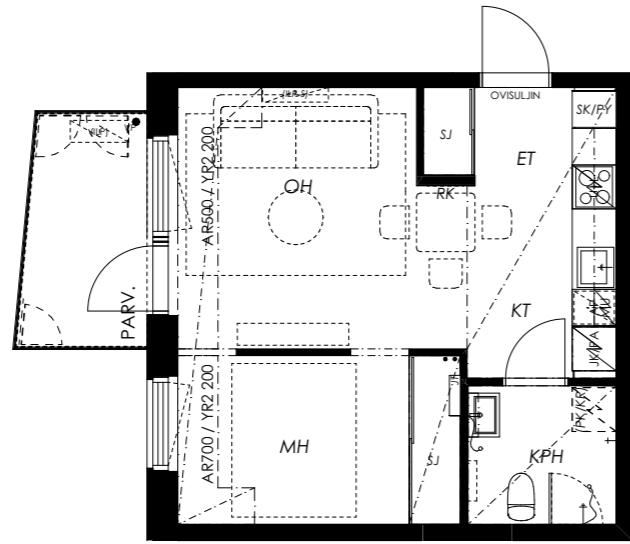
**1H+KT 36,5 m<sup>2</sup>**

- A98 12. krs
- A107 13. krs
- A116 14. krs
- A124 15. krs
- A132 16. krs



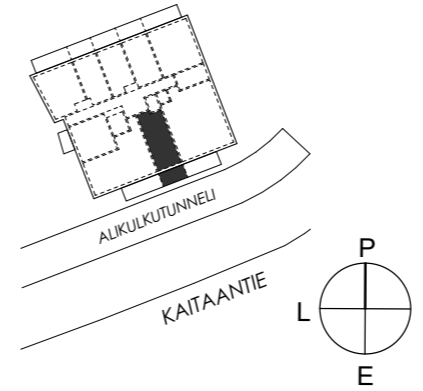
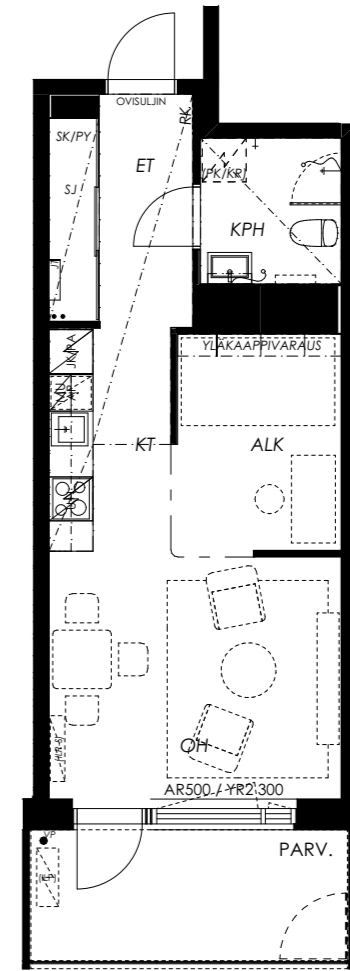
**2H+KT 36 m<sup>2</sup>**

- A15 3. krs
- A24 4. krs
- A33 5. krs
- A42 6. krs
- A51 7. krs
- A60 8. krs
- A69 9. krs



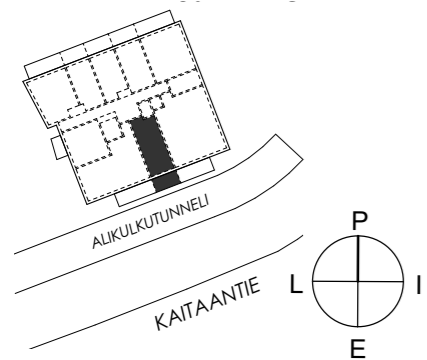
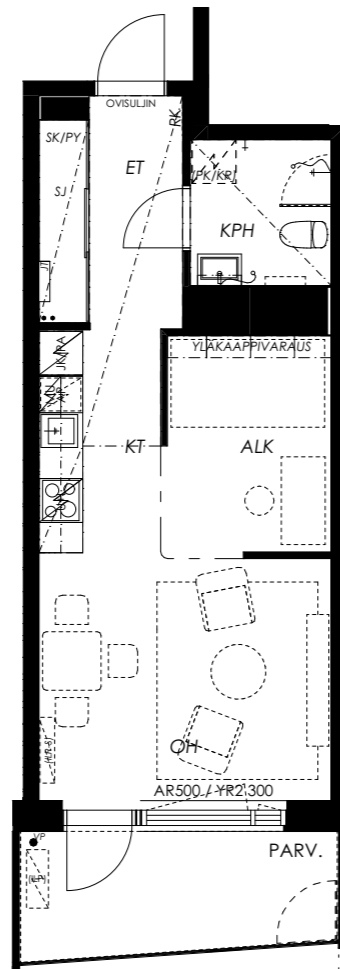
**1H+KT 36 m<sup>2</sup>**

- A44 6. krs
- A53 7. krs
- A62 8. krs
- A71 9. krs



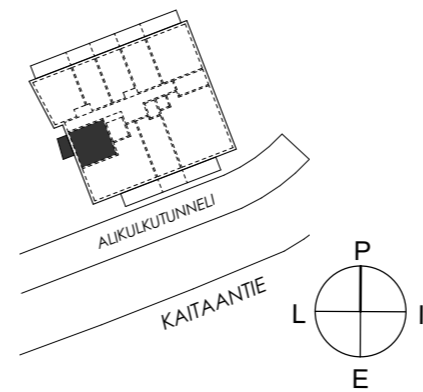
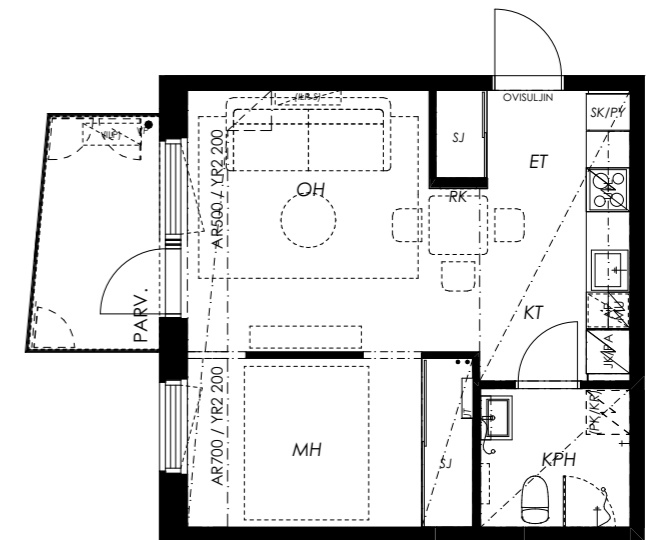
**1H+KT 36 m<sup>2</sup>**

- A17 3. krs
- A26 4. krs
- A35 5. krs



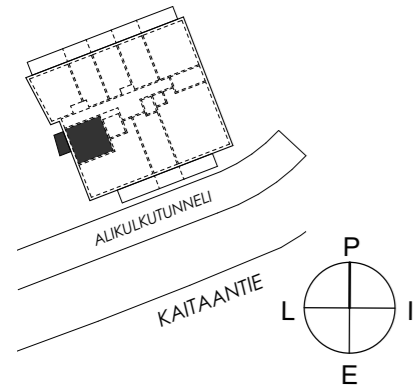
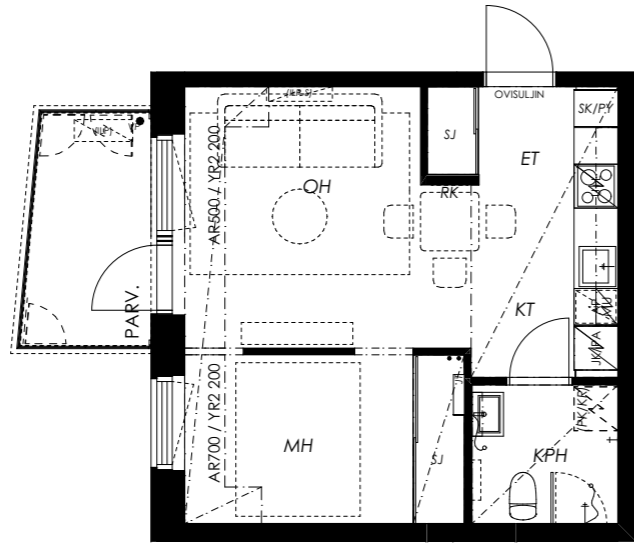
**2H+KT 36 m<sup>2</sup>**

- A78 10. krs
- A87 11. krs
- A96 12. krs
- A105 13. krs
- A114 14. krs



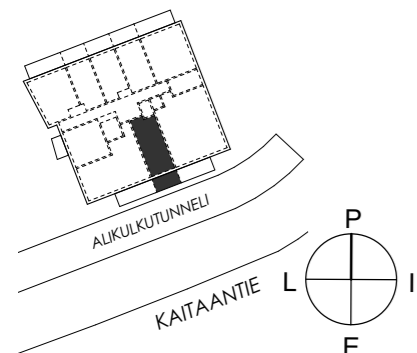
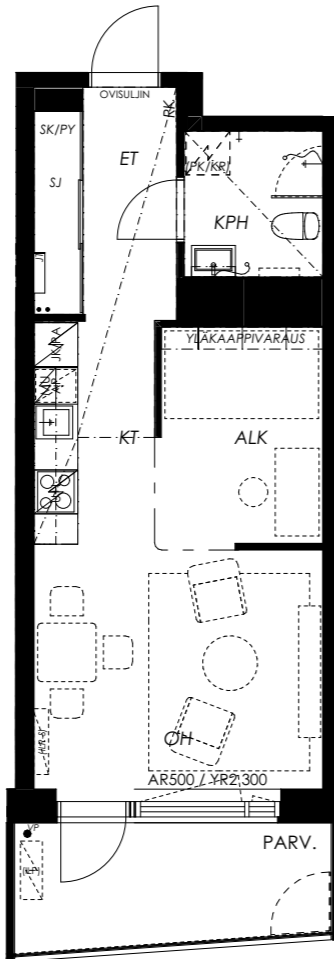
**2H+KT 35,5 m<sup>2</sup>**

A6 2. krs



**1H+KT 35,5m<sup>2</sup>**

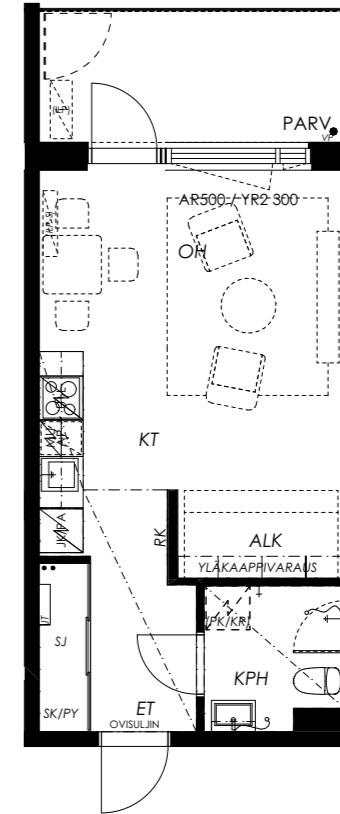
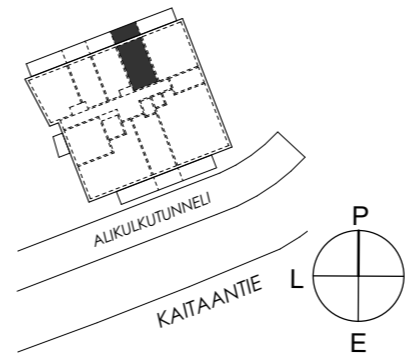
A8 2. krs



**1H+KT 32 m<sup>2</sup>**

A74 10. krs

A83 11. krs



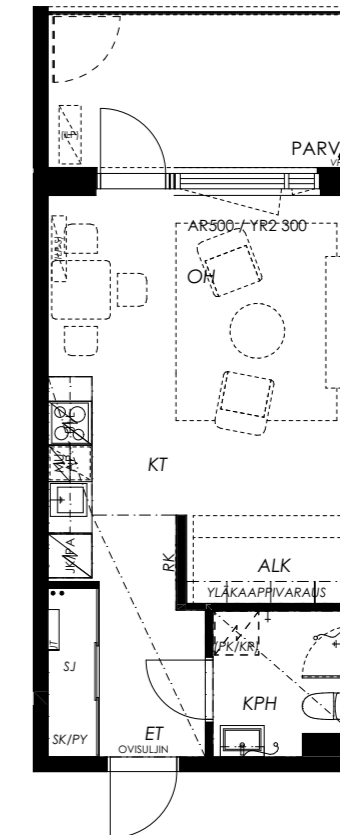
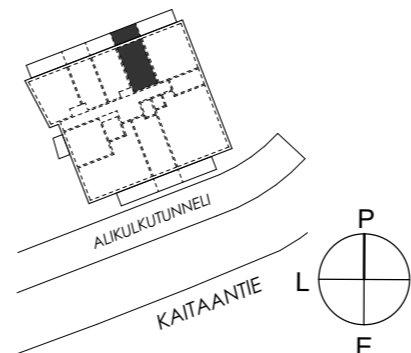
**1H+KT 32 m<sup>2</sup>**

A92 12. krs

A101 13. krs

A110 14. krs

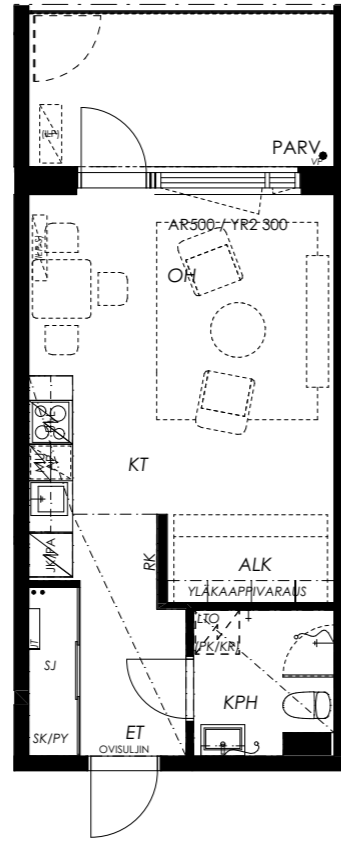
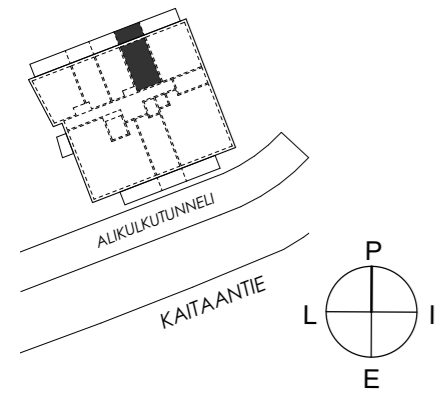
A119 15. krs





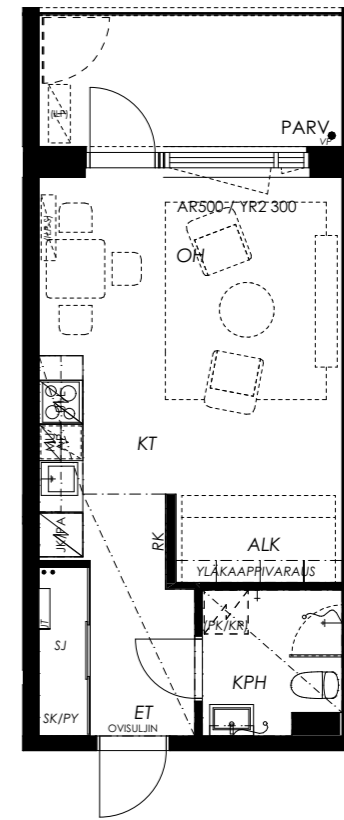
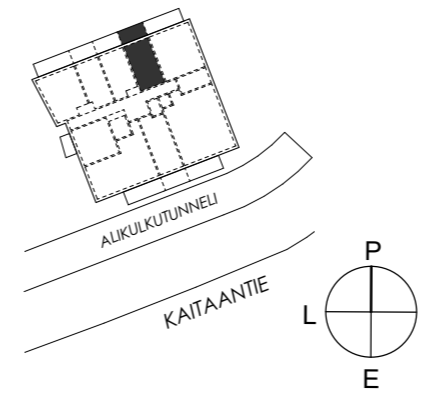
### 1H+KT 32 m<sup>2</sup>

A127 16. krs



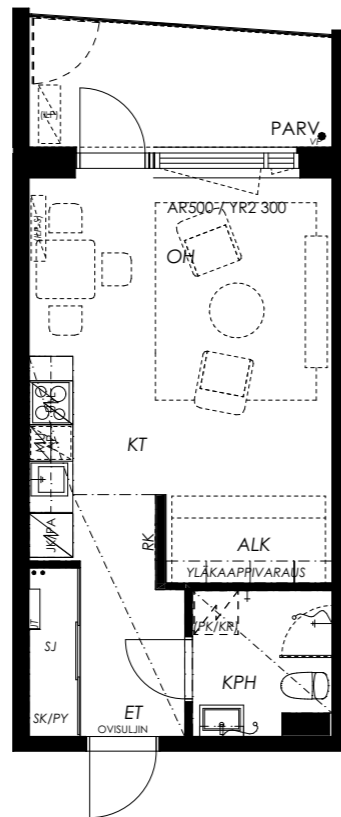
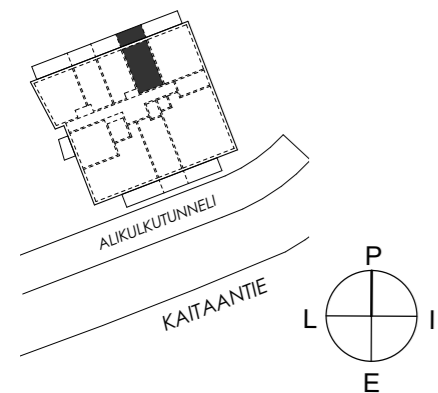
### 1H+KT 31,5 m<sup>2</sup>

A38 6. krs  
A47 7. krs  
A56 8. krs  
A65 9. krs



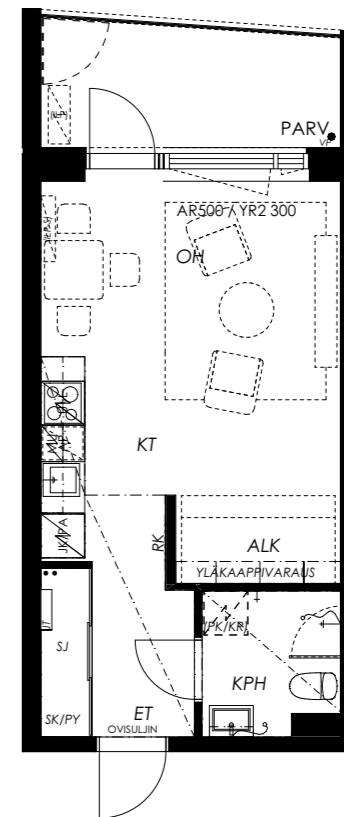
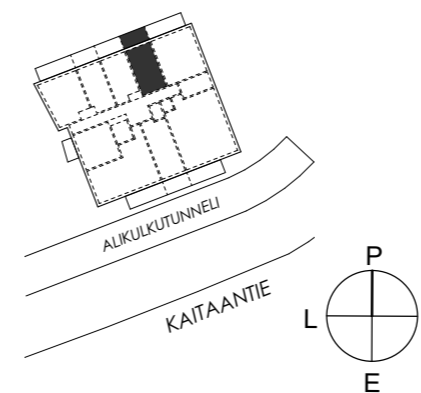
### 1H+KT 31,5 m<sup>2</sup>

A11 3. krs  
A20 4. krs  
A29 5. krs



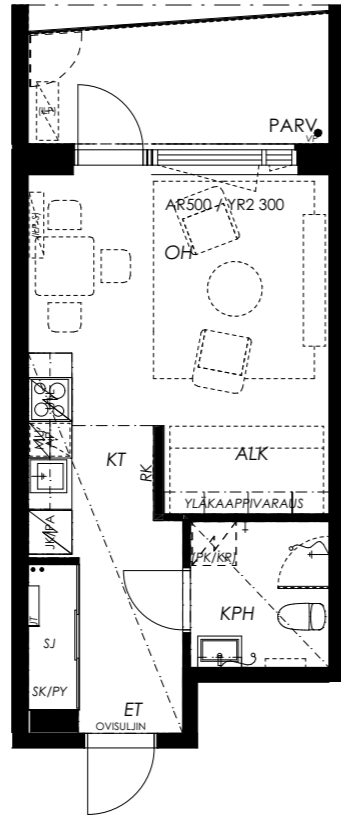
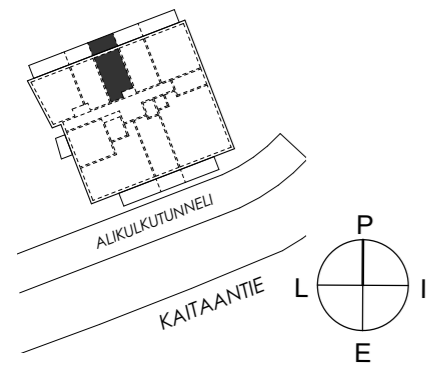
### 1H+KT 31 m<sup>2</sup>

A2 2. krs



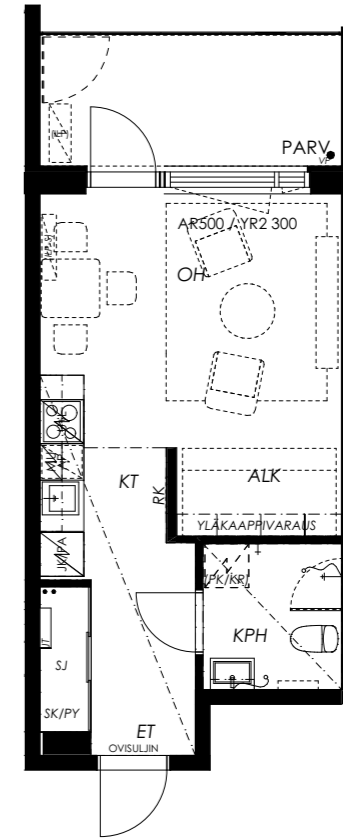
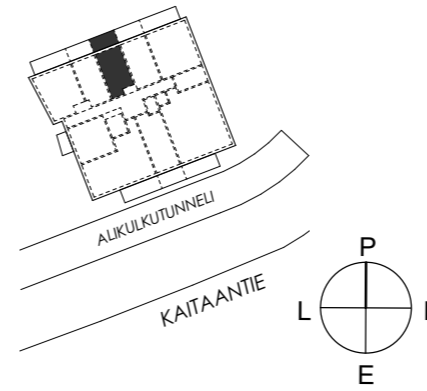
**1H+KT 29,5 m<sup>2</sup>**

A12 3. krs



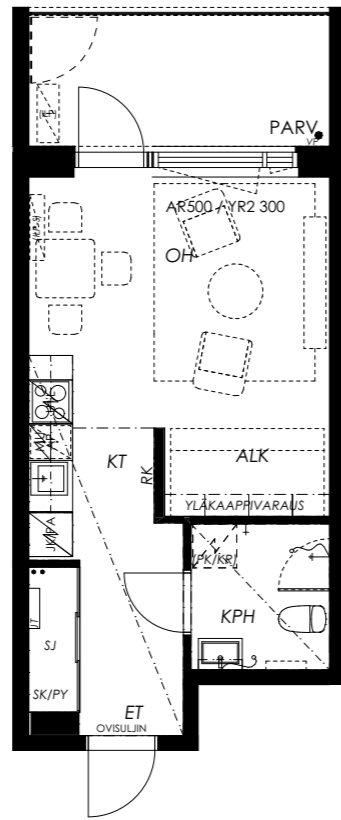
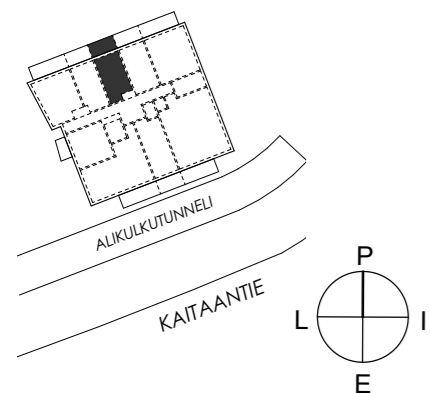
**1H+KT 29,5 m<sup>2</sup>**

A75 10. krs  
A84 11. krs  
A93 12. krs  
A102 13. krs



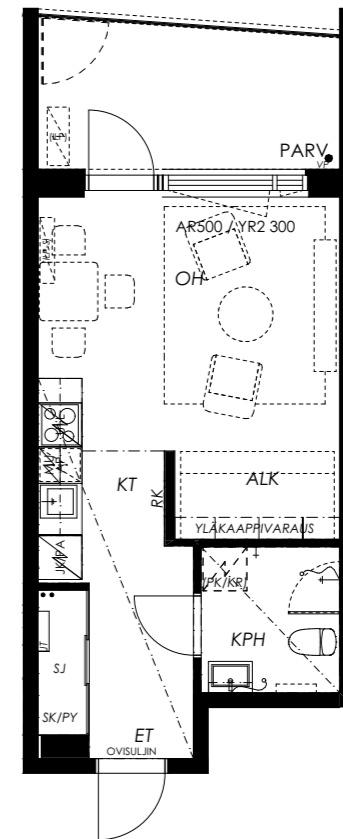
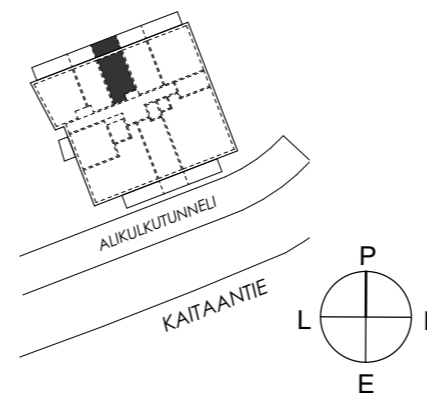
**1H+KT 29,5 m<sup>2</sup>**

A21 4. krs  
A30 5. krs  
A39 6. krs  
A48 7. krs  
A57 8. krs  
A66 9. krs



**1H+KT 29,5 m<sup>2</sup>**

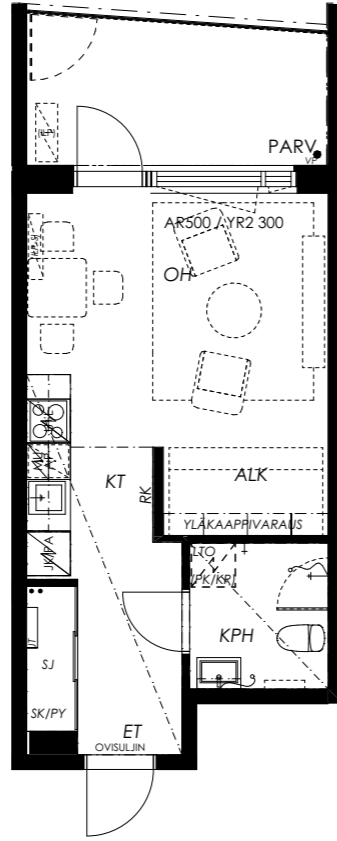
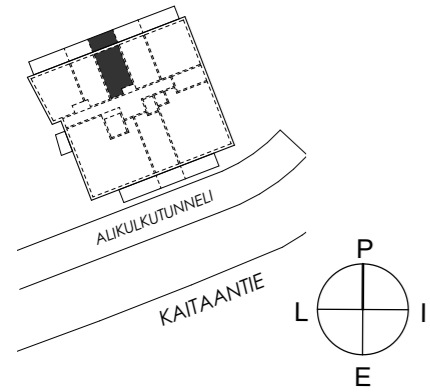
A111 14. krs  
A120 15. krs





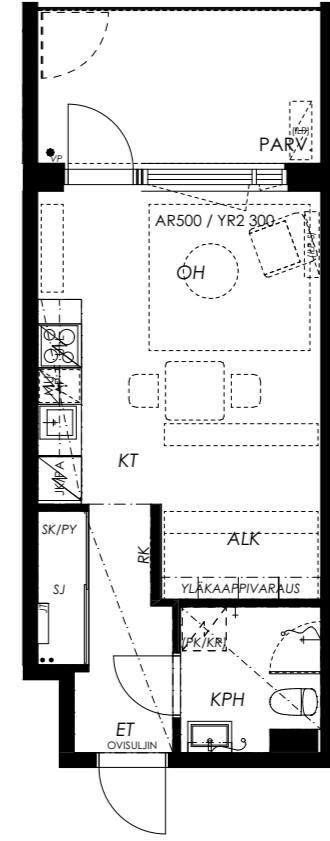
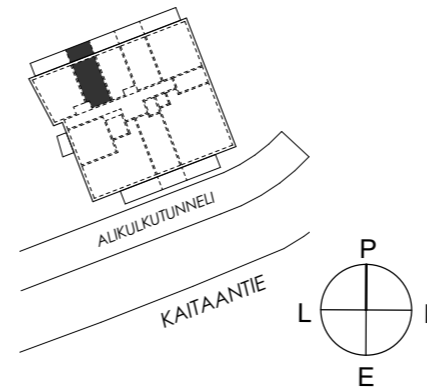
**1H+KT 29,5 m<sup>2</sup>**

A128 16. krs



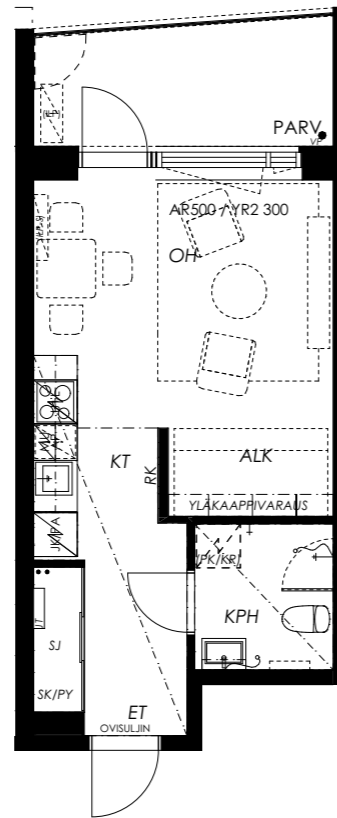
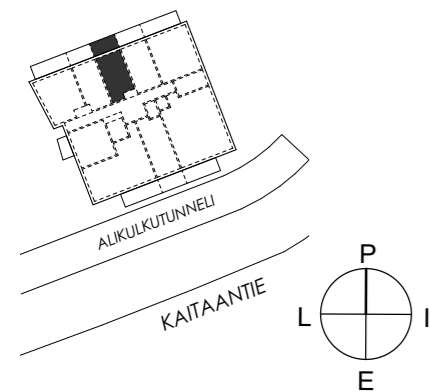
**1H+KT 29 m<sup>2</sup>**

- A76 10. krs
- A85 11. krs
- A94 12. krs
- A103 13. krs
- A112 14. krs
- A121 15. krs



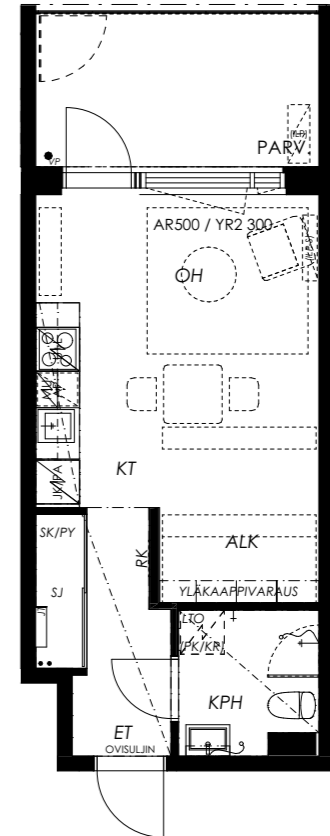
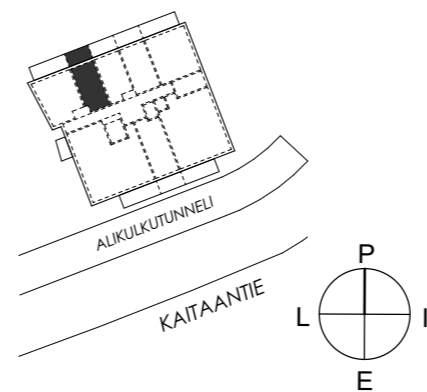
**1H+KT 29 m<sup>2</sup>**

A3 2. krs



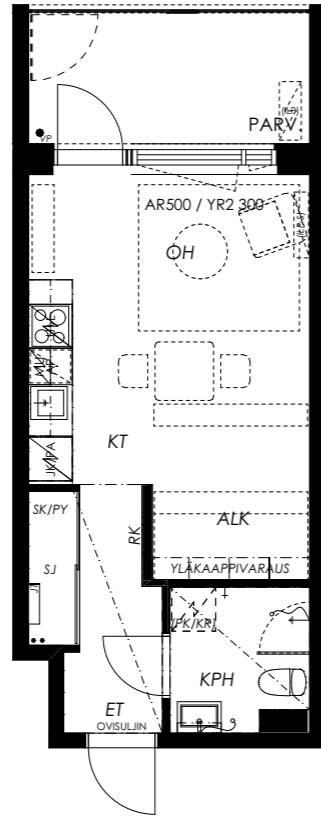
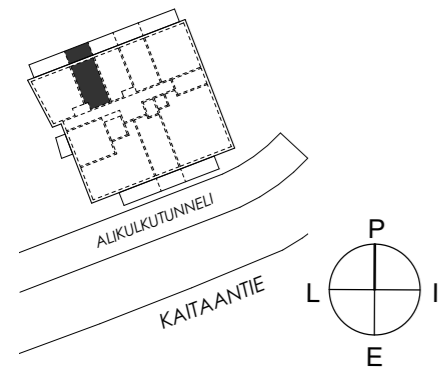
**1H+KT 29 m<sup>2</sup>**

A129 16. krs



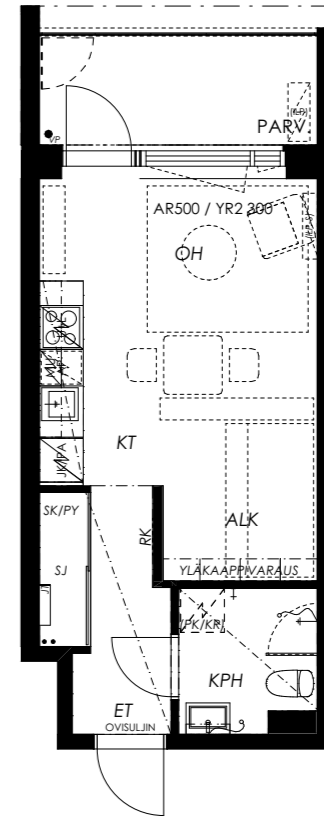
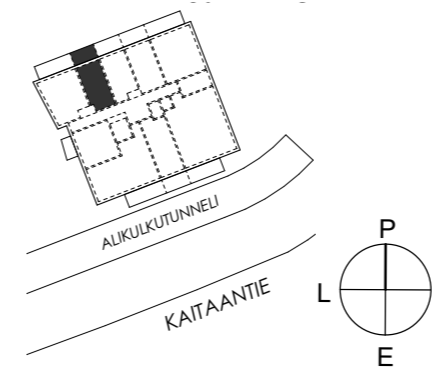
**1H+KT 28,5 m<sup>2</sup>**

- A13 3. krs
- A22 4. krs
- A31 5. krs
- A40 6. krs
- A49 7. krs
- A58 8. krs



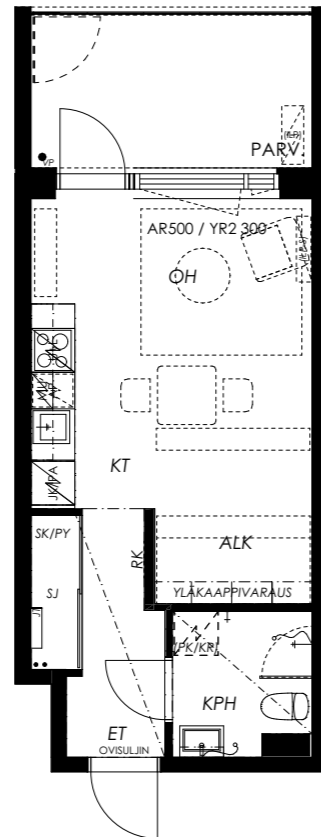
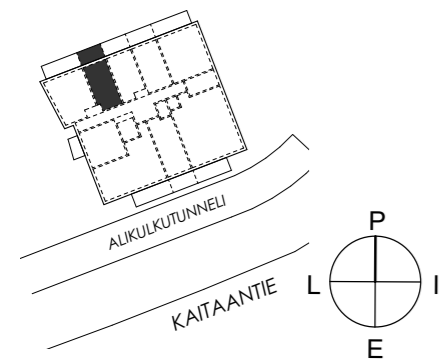
**1H+KT 28 m<sup>2</sup>**

- A4 2. krs



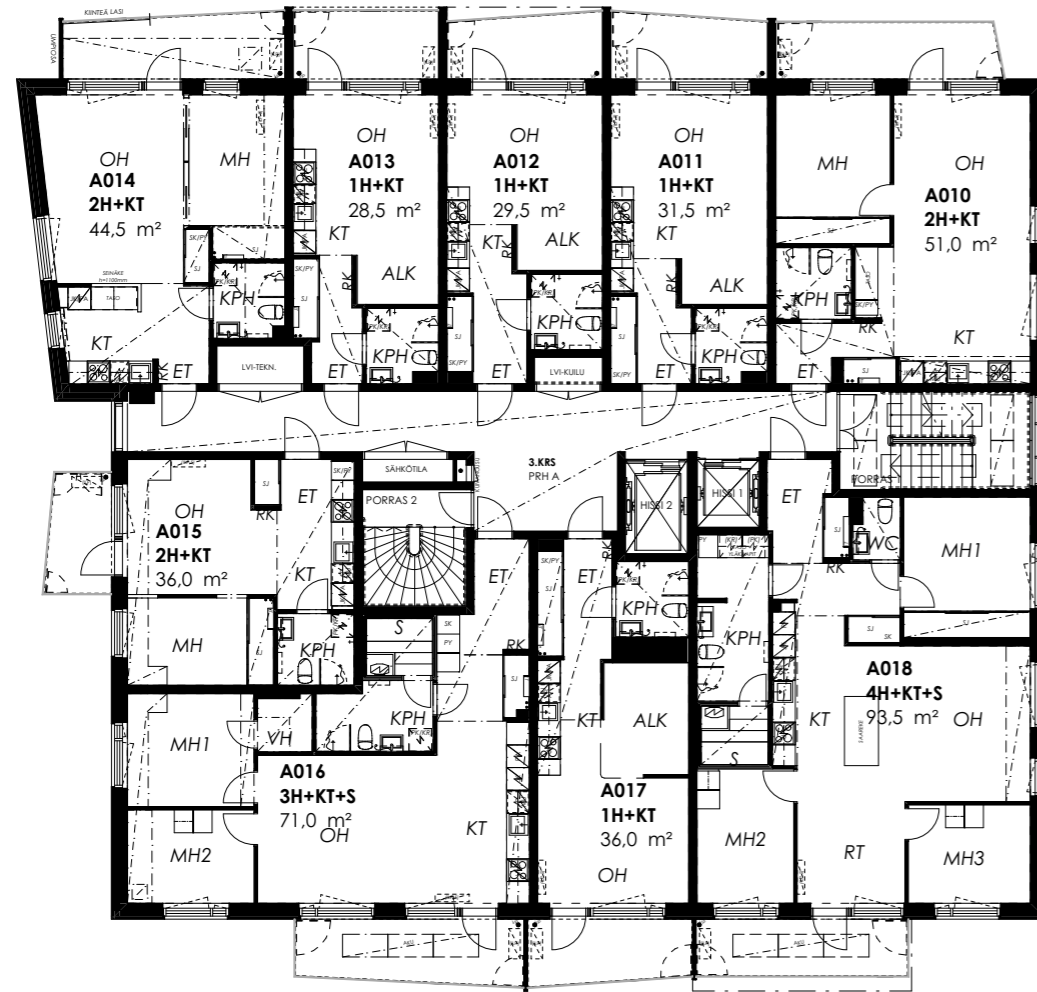
**1H+KT 28,5 m<sup>2</sup>**

- A67 9. krs

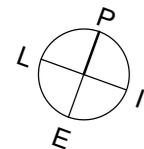




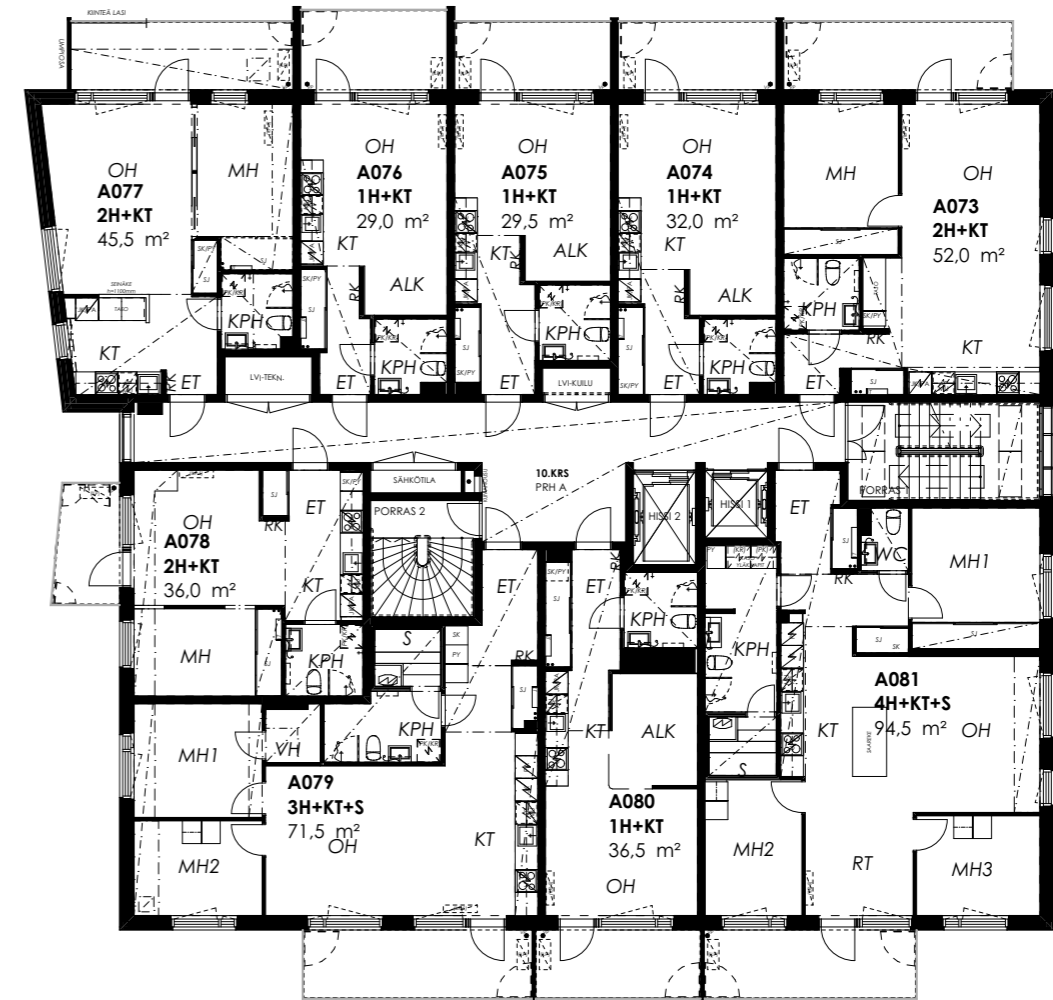
### 3–9. kerros



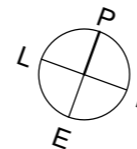
Parvekkeiden muoto vaihtelee asunnoittain, joka selviää asunnon omasta pohjapiirroksesta.



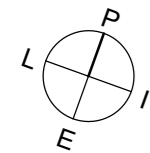
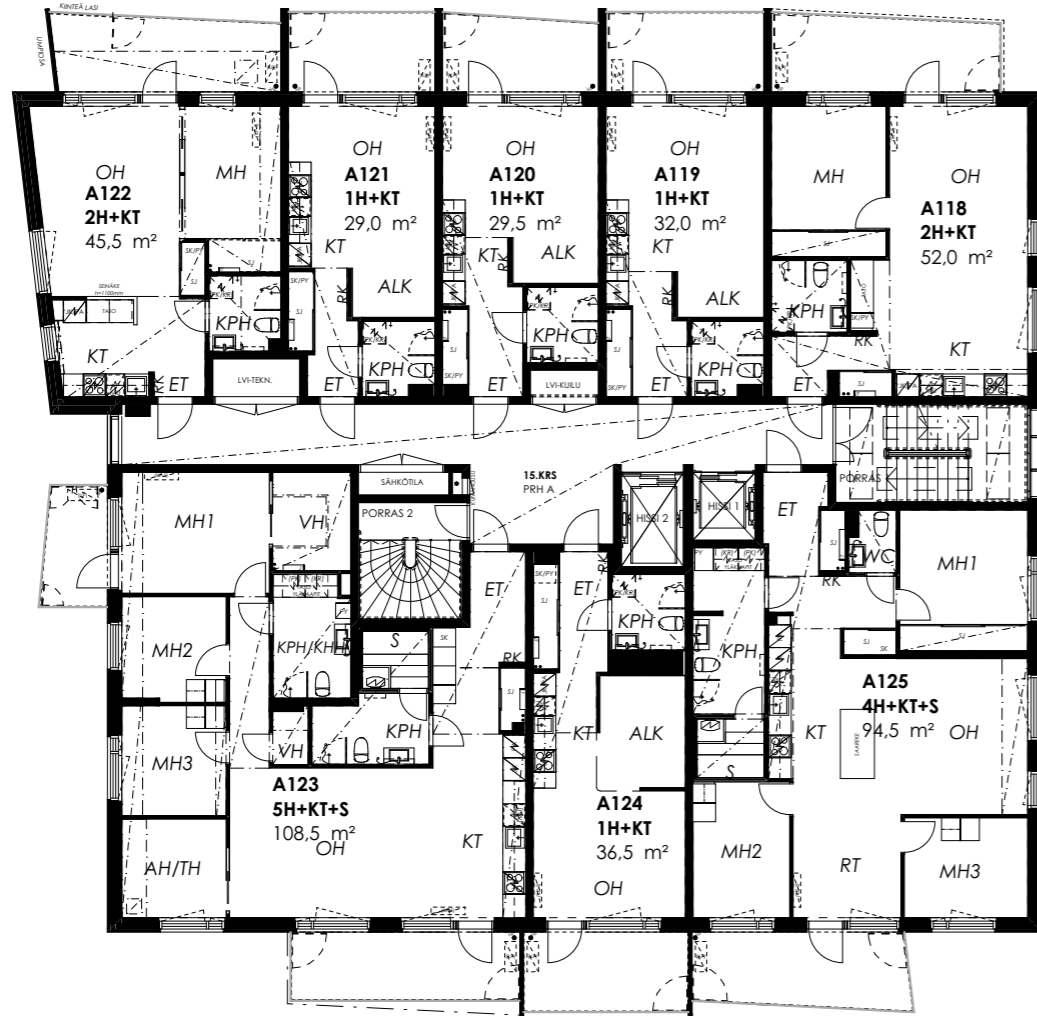
### 10–14. kerros



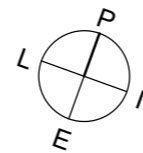
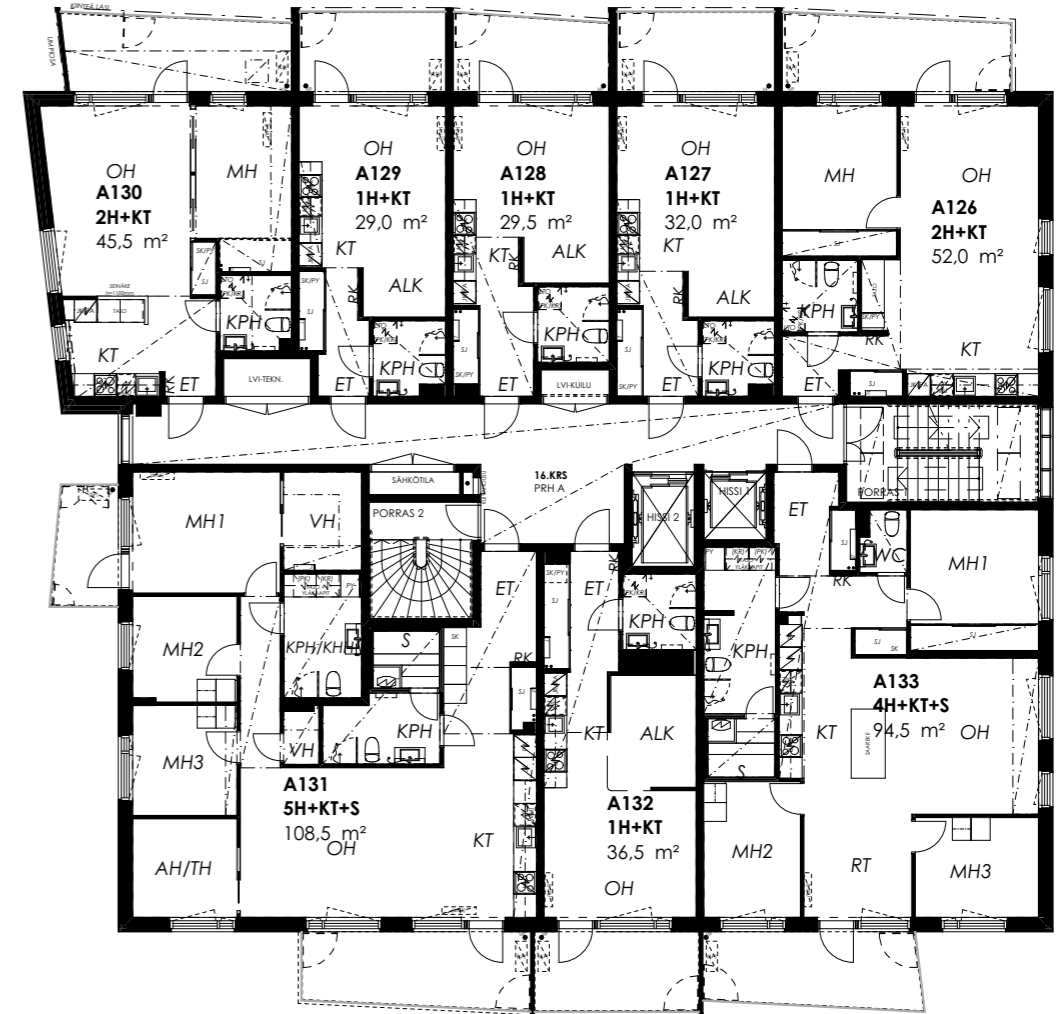
Parvekkeiden muoto vaihtelee asunnoittain, joka selviää asunnon omasta pohjapiirroksesta.



### 15. kerros

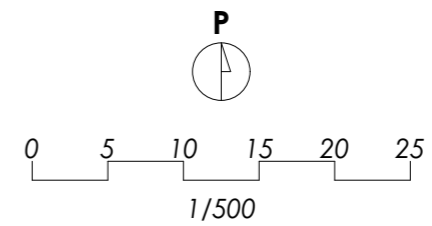
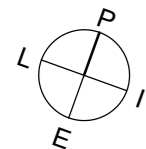
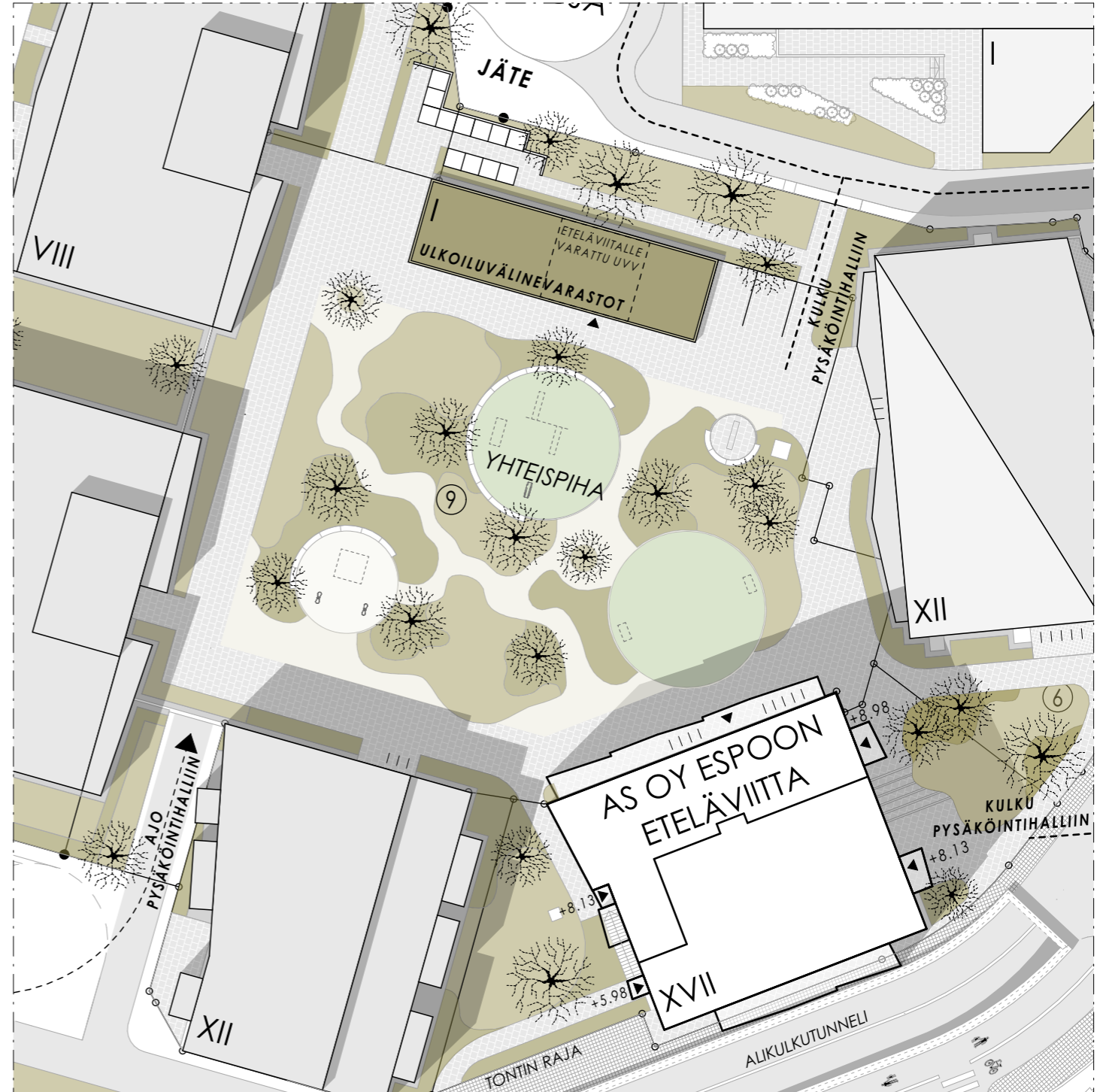
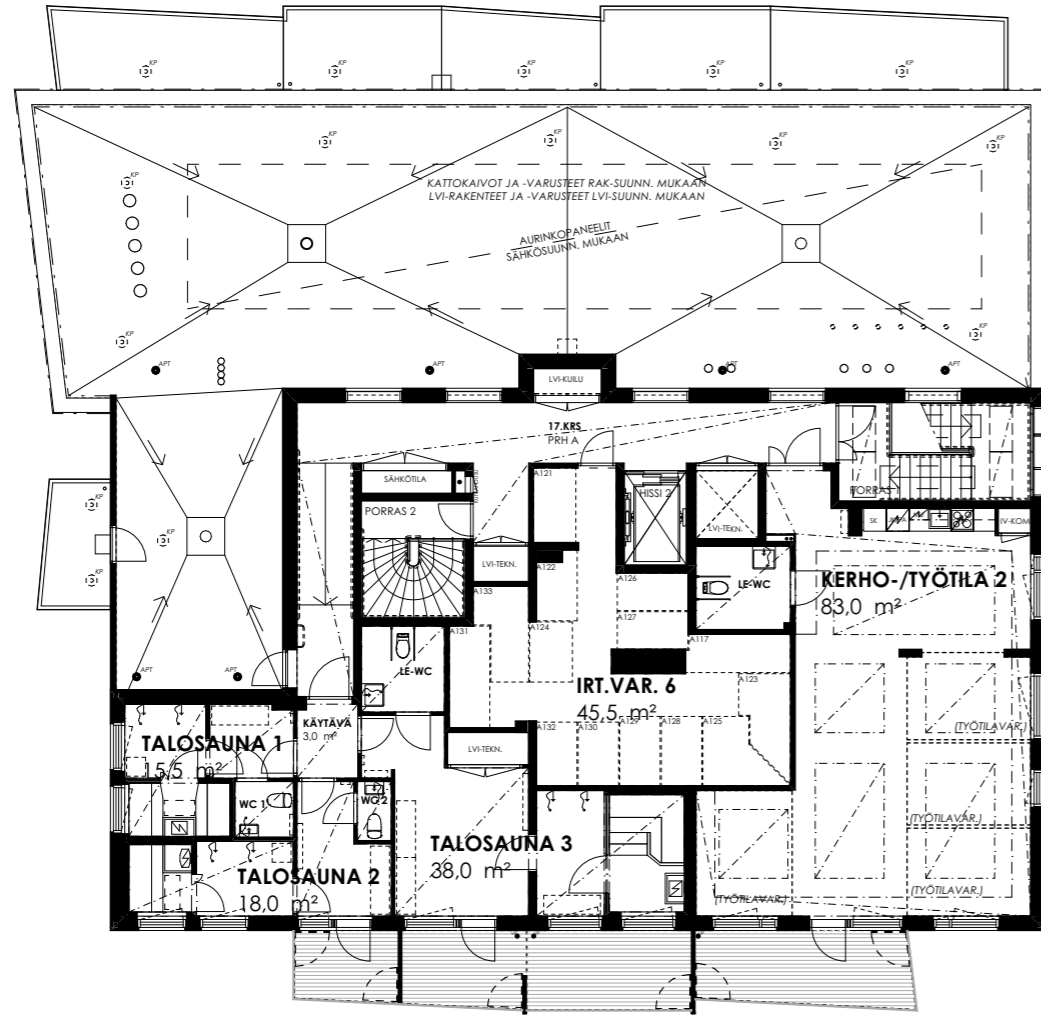


### 16. kerros





17. kerros



Rakentaja pidättää mahdollisuuden muuttaa tämän tiedotteen tietoja ja piirustuksia. Ostajan on tutustuttava myyntiasiakirjoihin ja vahvistettuihin suunnitelmiin kauppakirjan allekirjoittamisen yhteydessä. Tämä tiedote perustuu tilanteeseen 10/2022. Asuntojen markkinoinnissa annettavista tiedoista annetun asetuksen nro 130/2001 mukainen esite on nähtävissä esittelyssä. Rakennustapaselostuksen saat asunnon myyjältä tai rakentajalta.

# Kestää elämän.



Ympäristömerkitty painotuote, 4041 0955 Grano Oy (ISO14001-ympäristösertifiointi) 50kpl 27.10.2022

**SKANSKA**

**Skanska Kodit**  
skanska.fi/kodit  
skanska.fi/otayhteytta  
Asuntomyynti p. 0800 162 162

**Skanska Talonrakennus Oy**  
Nauvontie 18, 00280 Helsinki