

As. Oy Helsingin Maininki

# Huoneisto- ja kerrospohjat

[skanska.fi/maininki](https://skanska.fi/maininki)

**SKANSKA**

- ALK alkovi
- ET eteinen
- K keittiö
- KHH kodinhoituhuone
- KPH kylpyhuone
- KT keittotila
- KÄY käytävä
- MH makuuhuone
- MT makuutila
- OH olohuone
- S sauna
- VH vaatehuone
- TH työhuone
- PARV. parveke

 liesitaso, uuni ja liesikupu


 tiskiallas ja hana

 astianpesukone tason alla

 mikroaaltouuni

 jääkaappi, pakastin

 jääkaappipakastinyhdistelmä

 uuni ja mikroaaltouuni päällekkäin samassa kalusteessa

 ryhmäkeskus

 jaettu siivous-/pyykkikaappi


 siivouskaappi

 pyykkikaappi


 hyllykaappi

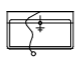
 tankokaappi


 yläkaappi alkovissa


 lattiaa asennettu jakotukki

 SJ liukuovellinen säilytysjärjestelmä


 wc-istuin


 lavuaari, allaskaappi, tasopeili, hana ja käsisuihku

 suihku

 kääntyvä suihkuseinä

 sähkökiuas

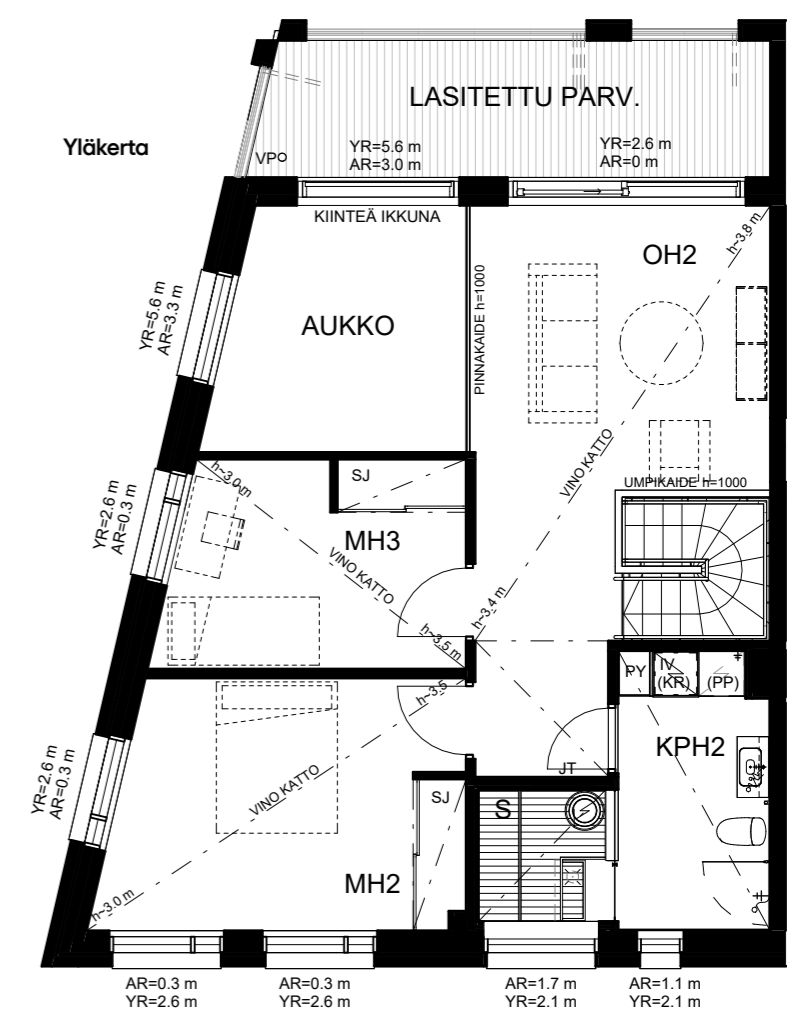
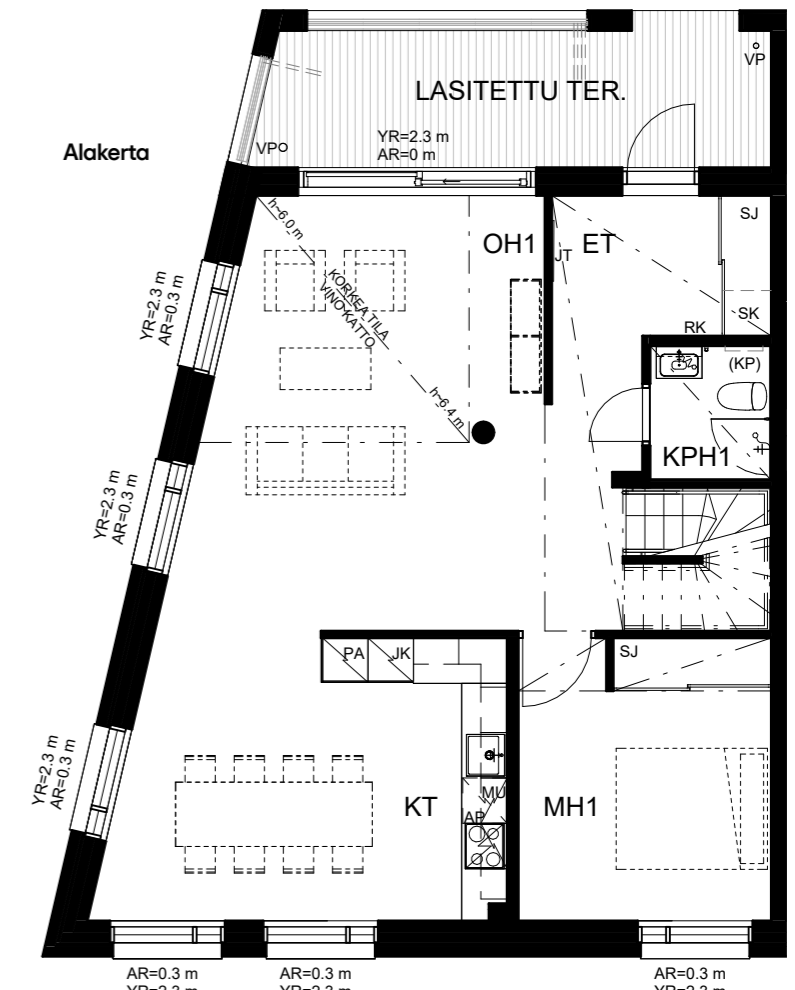
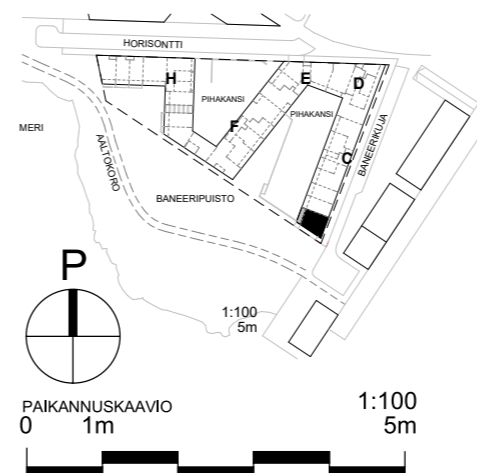
 tilavaraus pesukoneelle ja kuivausrummulle, päällä huoneistokohtainen ilmanvaihtokone

 tilavaraus kuivausrummulle tason alla

 viilennysyksikkö

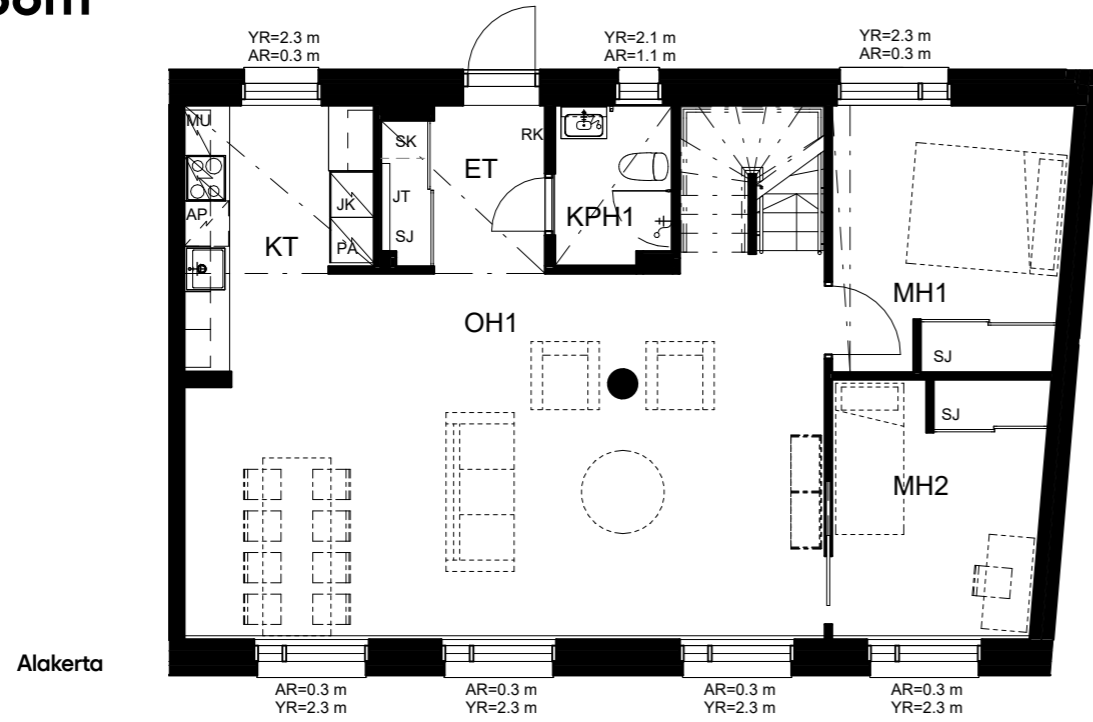
## 5H+KT+S 137,5 m<sup>2</sup>

B4 2. krs 72,0 m<sup>2</sup>  
3. krs 65,5 m<sup>2</sup>

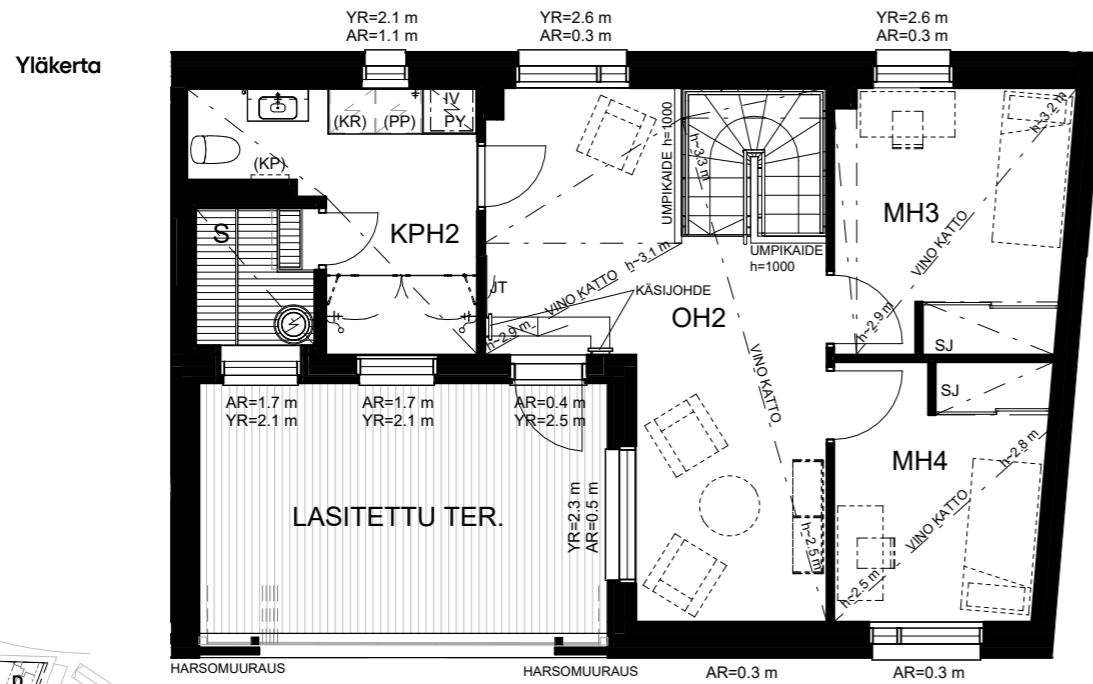


**6H+KT+S 136m<sup>2</sup>**

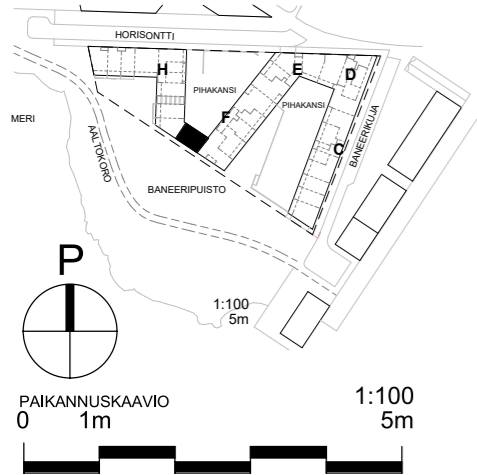
G61 1. krs 76,5 m<sup>2</sup>  
2. krs 59,5 m<sup>2</sup>



Alakerta



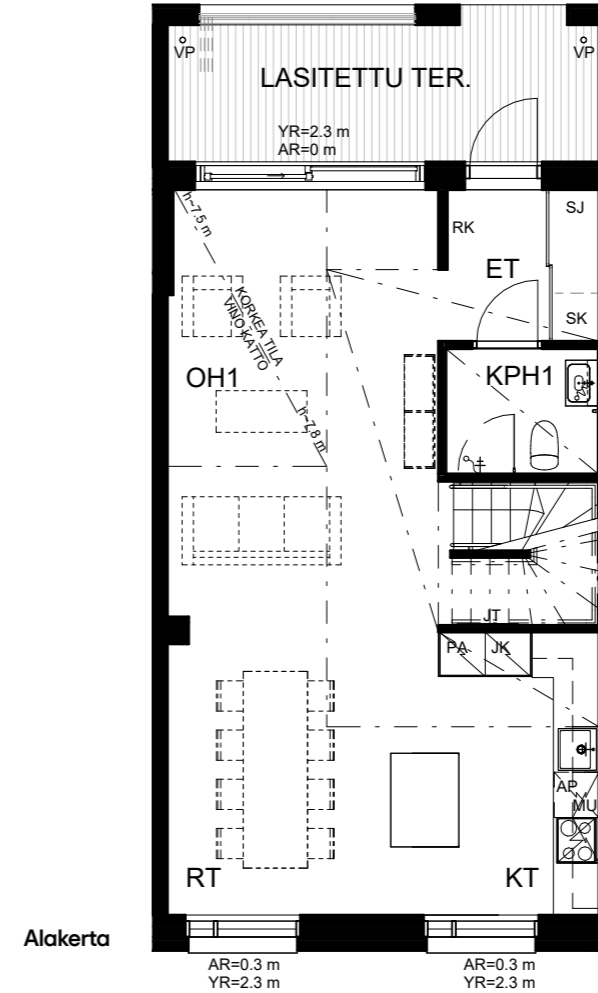
Yläkerta



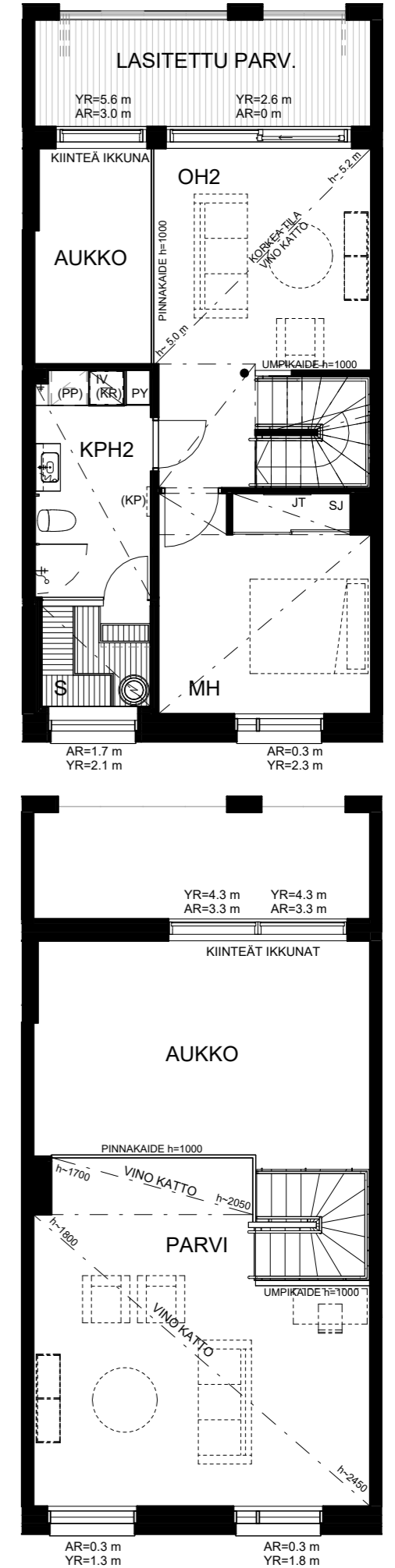
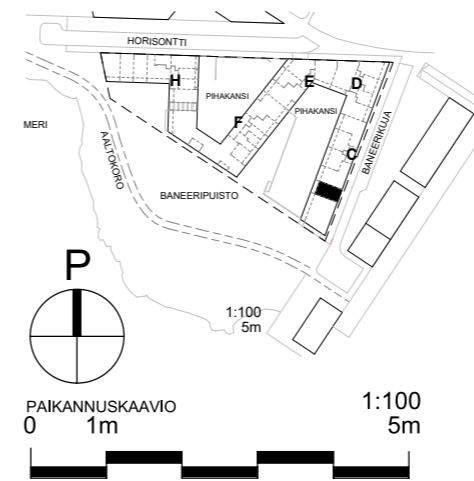
**3H+KT+S+PARVI 130,5 m<sup>2</sup>**

B6 2. krs 50,5 m<sup>2</sup>  
3. krs 47,0 m<sup>2</sup>  
4. krs 33,0 m<sup>2</sup>

Yläkerta



Alakerta



Yläkerta

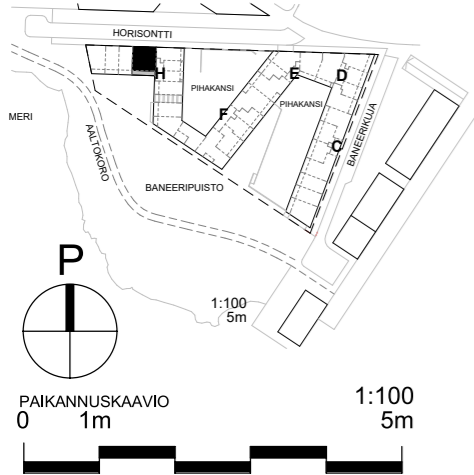
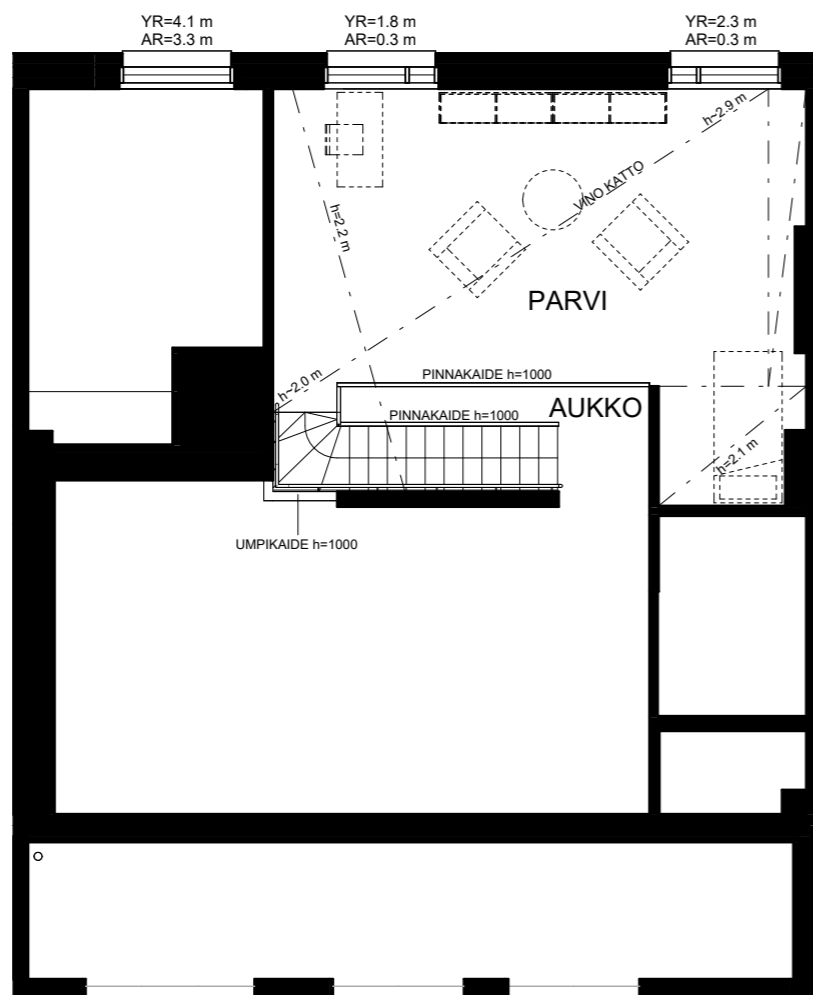
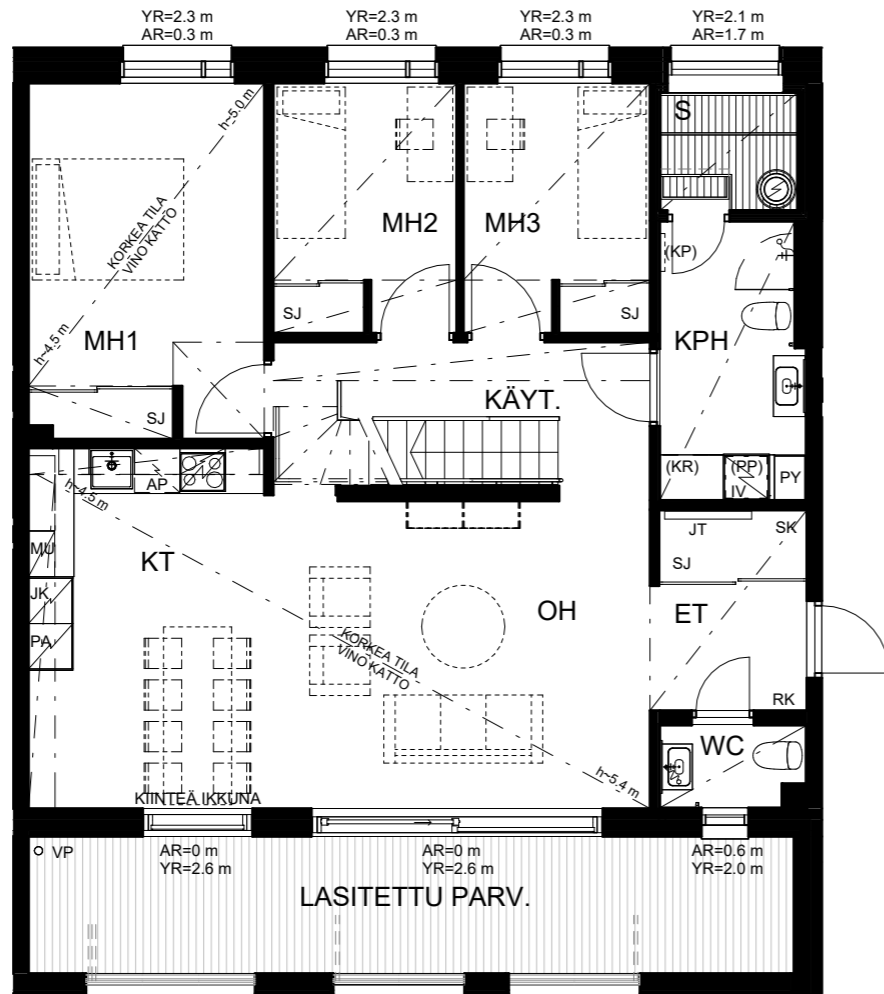
Parvi

**4H+KT+S+PARVI**  
**129 m<sup>2</sup>**

H68 2. krs 94,0 m<sup>2</sup>  
3. krs 35,0 m<sup>2</sup>

Alakerta

Yläkerta

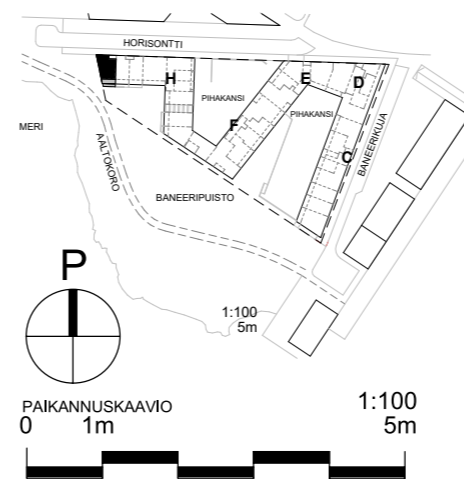
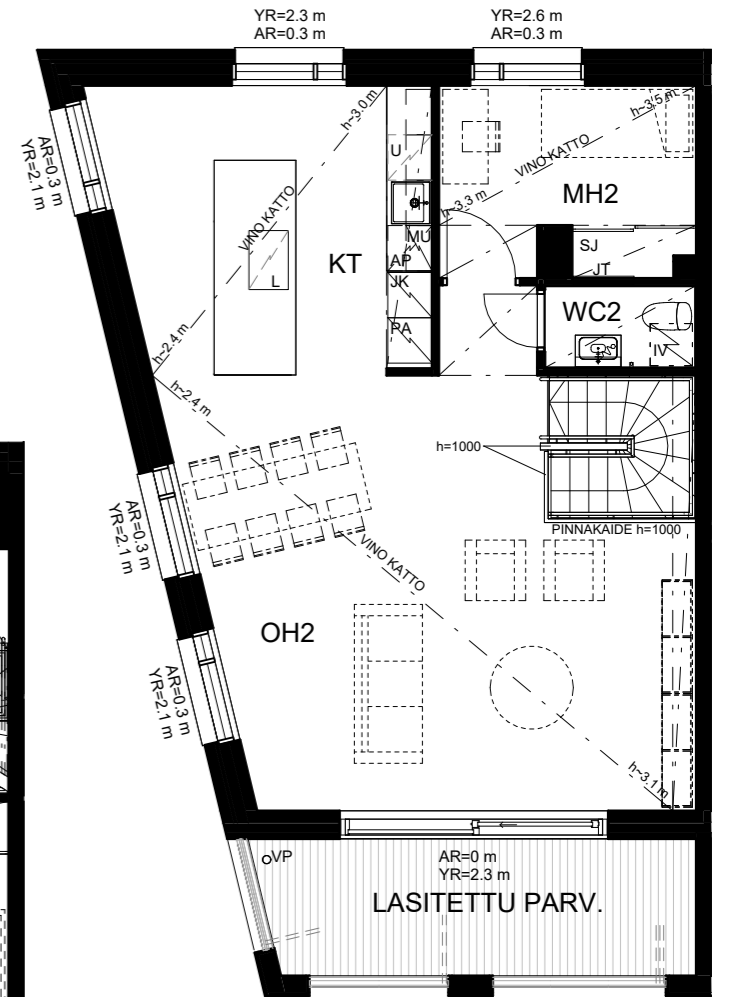
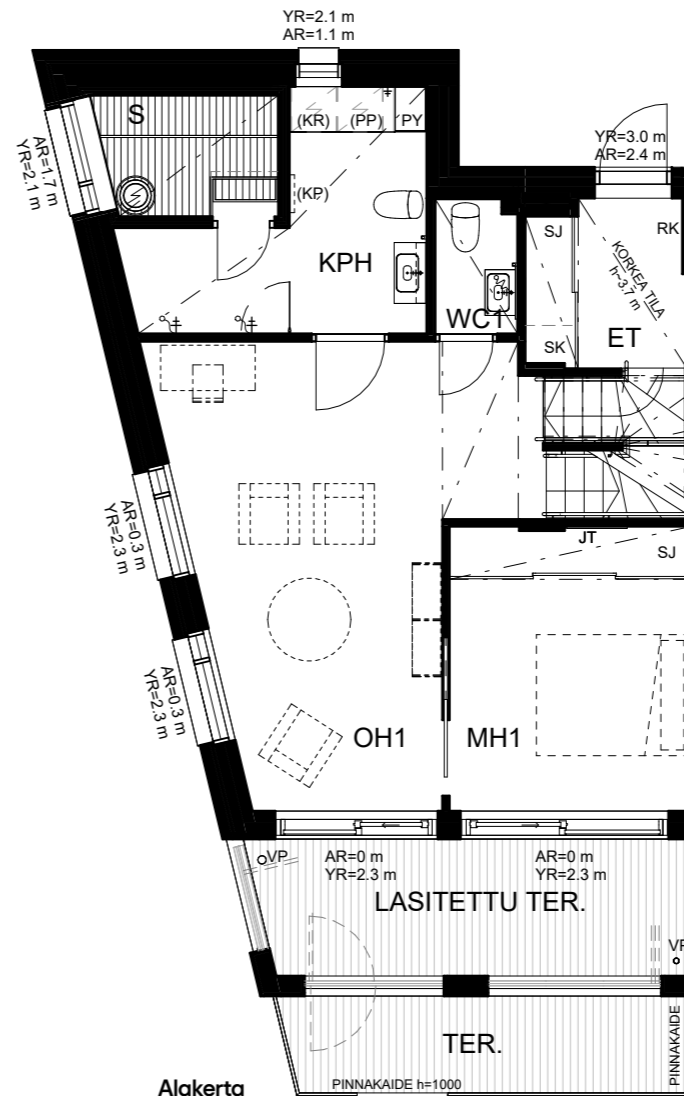


**4H+KT+S 123,5 m<sup>2</sup>**

178 1. krs 57,5 m<sup>2</sup>  
2. krs 66,0 m<sup>2</sup>

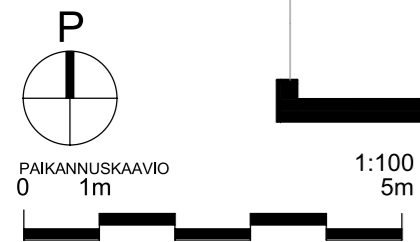
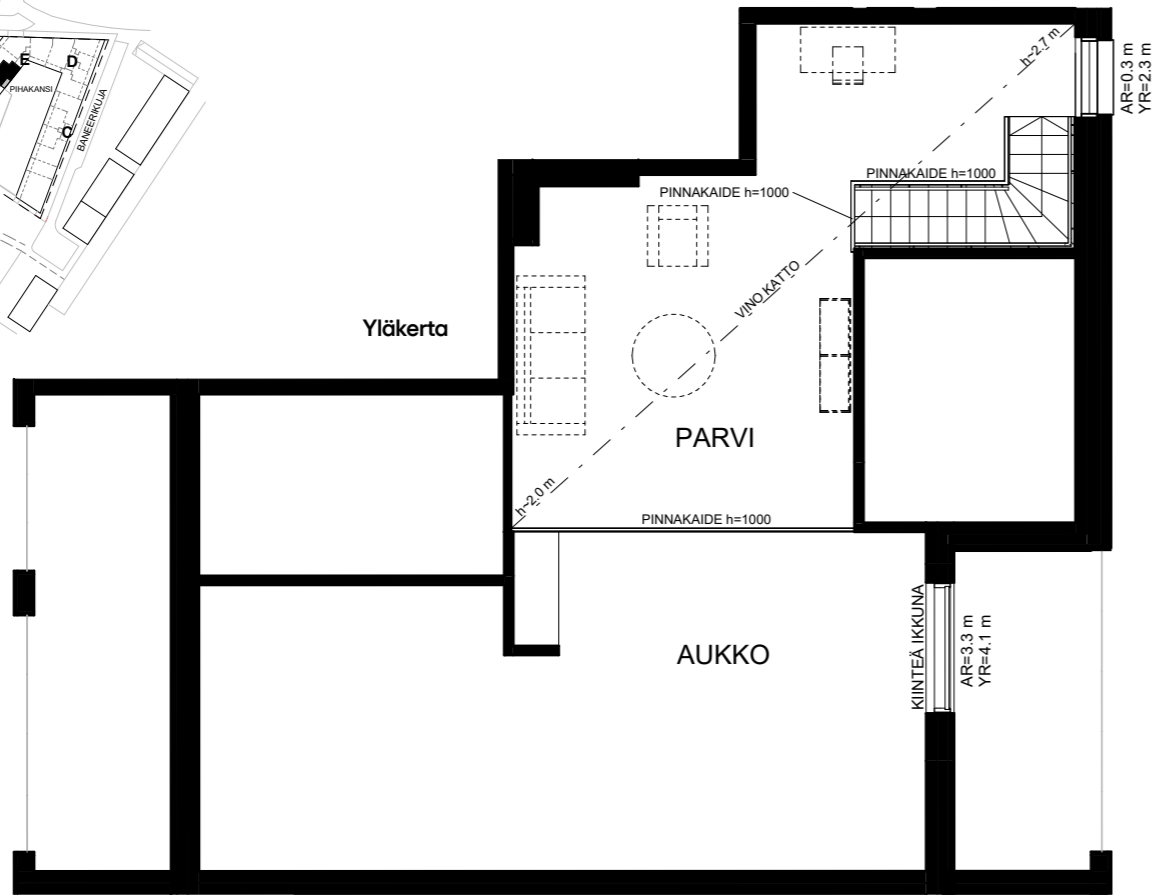
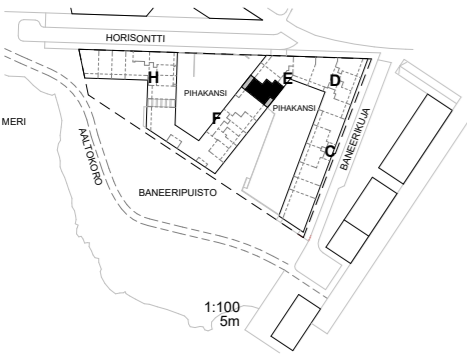
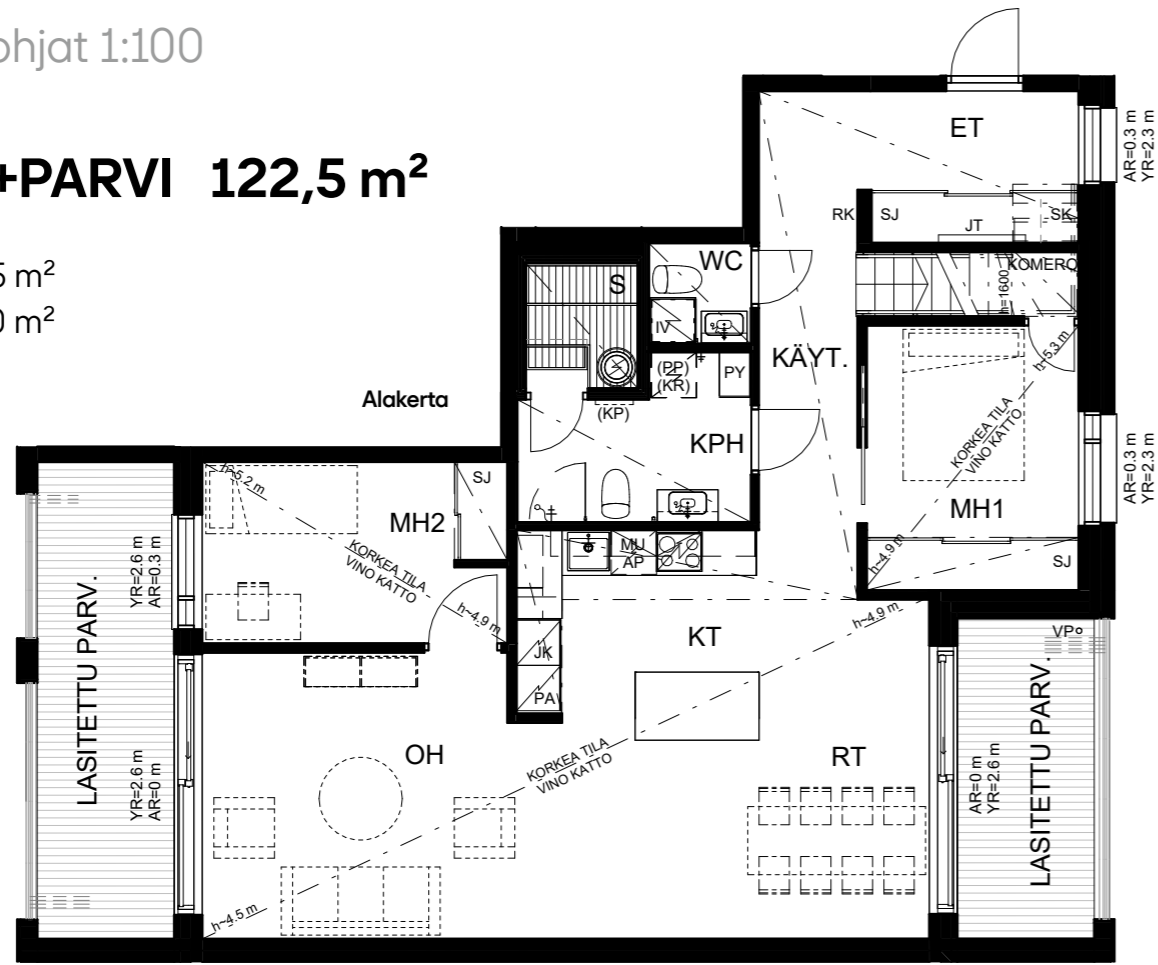
Alakerta

Yläkerta



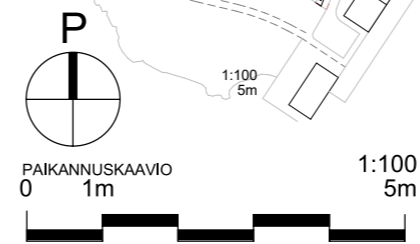
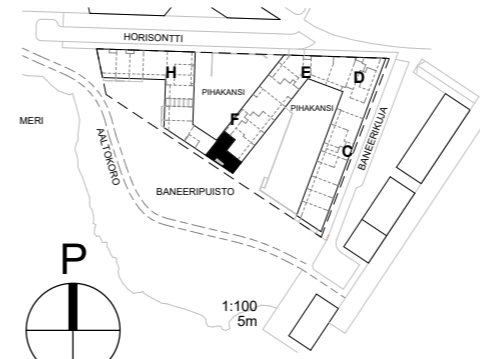
**3H+KT+S+PARVI 122,5 m<sup>2</sup>**

E42 3. krs 90,5 m<sup>2</sup>  
4. krs 32,0 m<sup>2</sup>



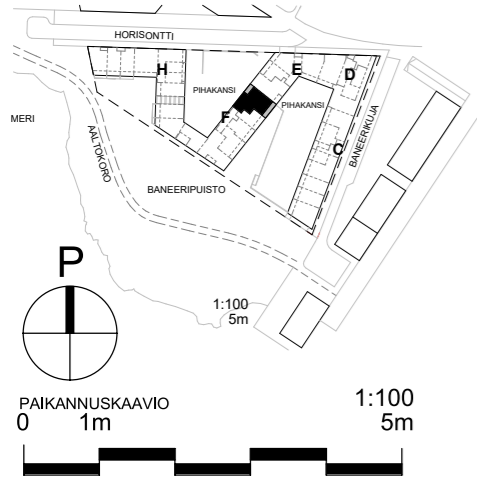
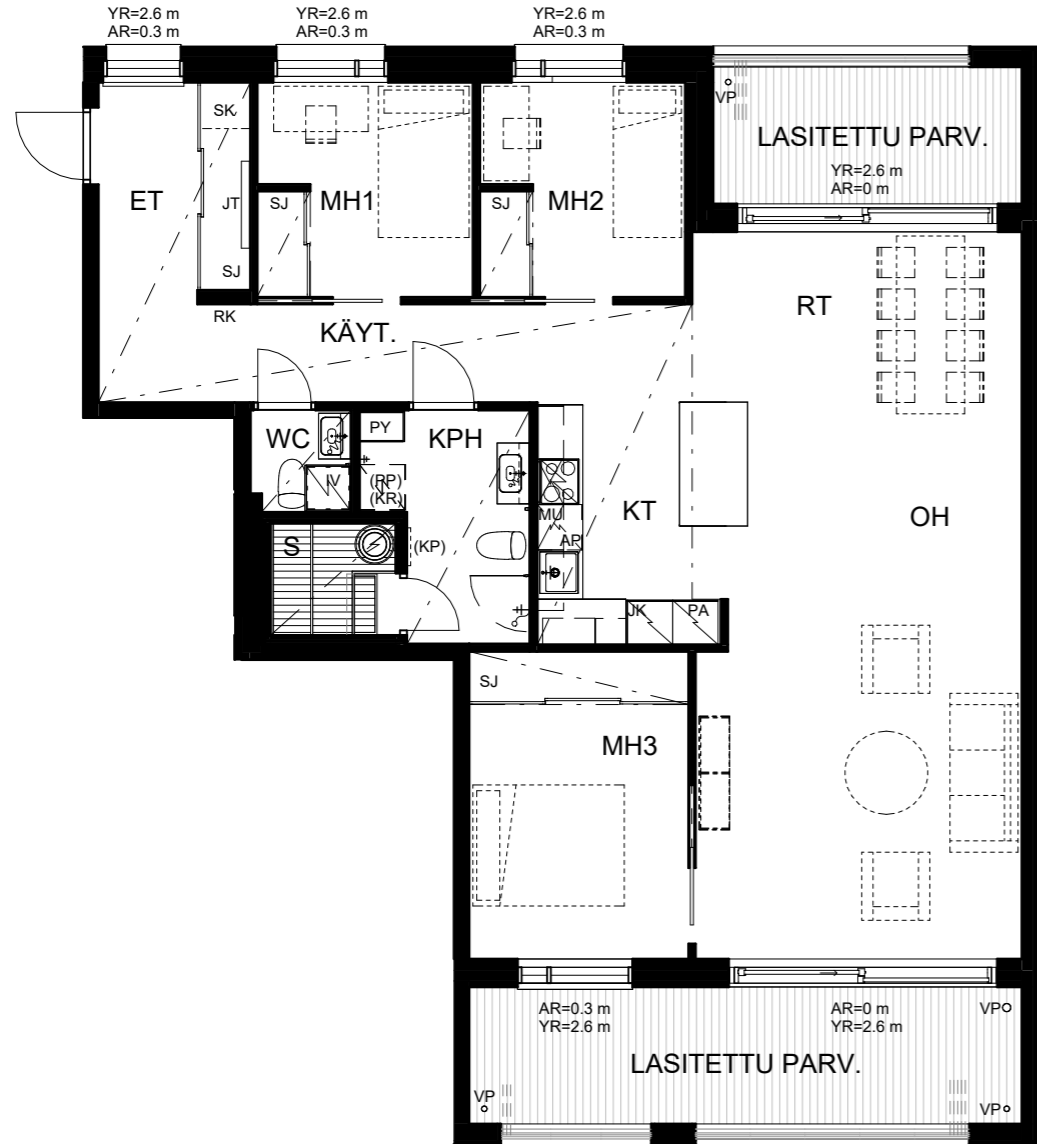
**4H+KT+S 107 m<sup>2</sup>**

G53 1. krs



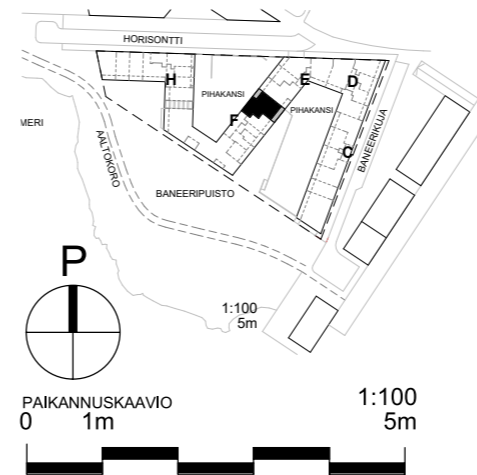
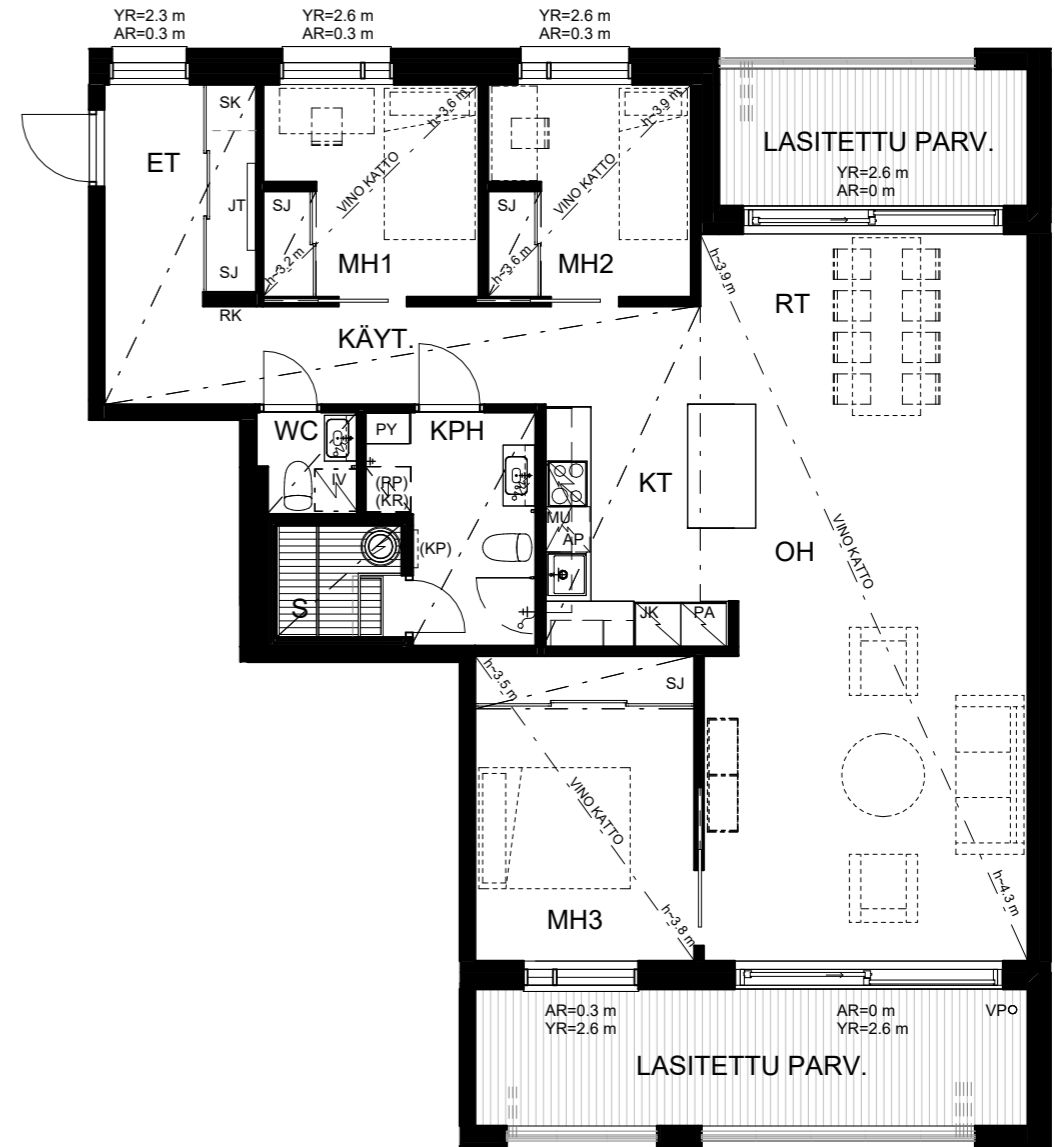
# 4H+KT+S 105,5 m<sup>2</sup>

F49 1. krs



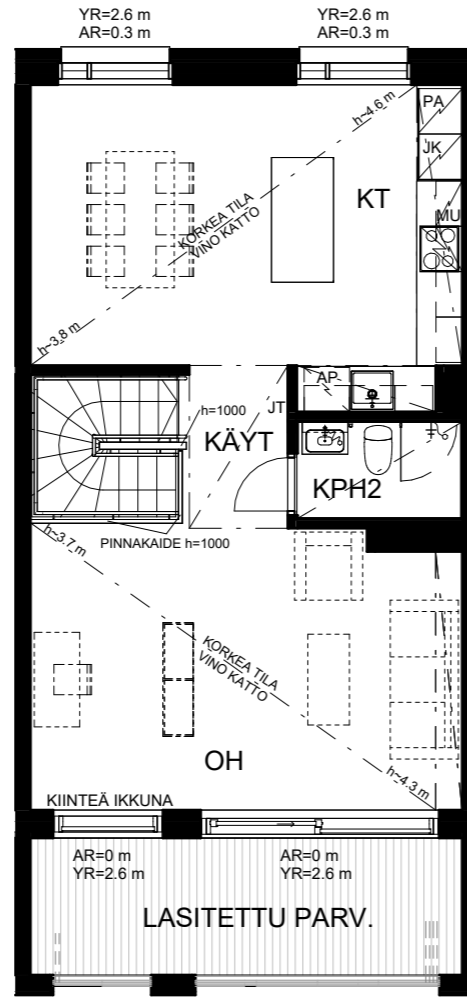
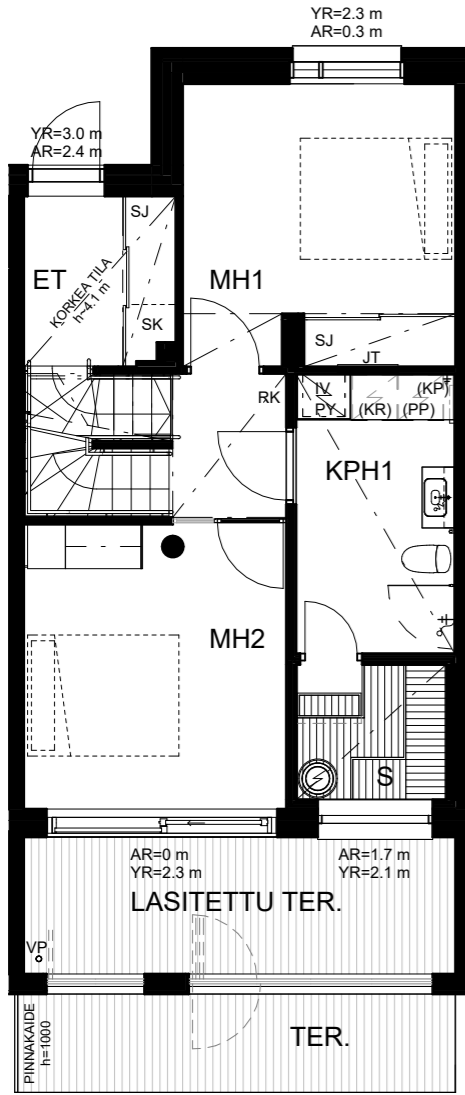
# 4H+KT+S 105,5 m<sup>2</sup>

F59 3. krs



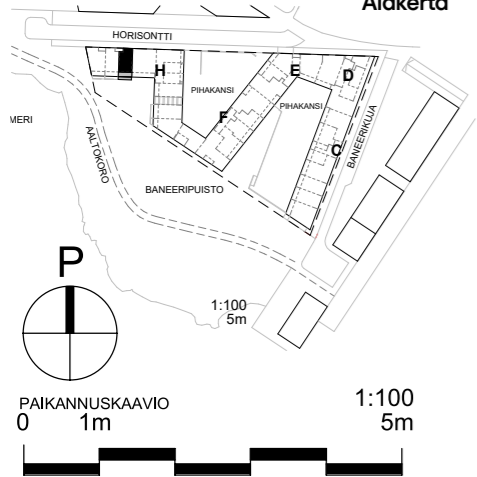
### 3H+KT+S 101,5 m<sup>2</sup>

I76 1. krs 47,5 m<sup>2</sup>  
2. krs 54,0 m<sup>2</sup>



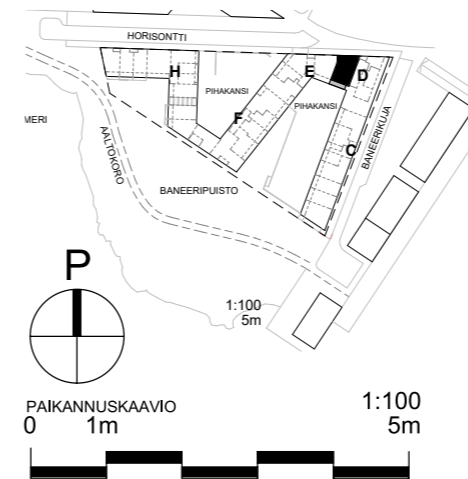
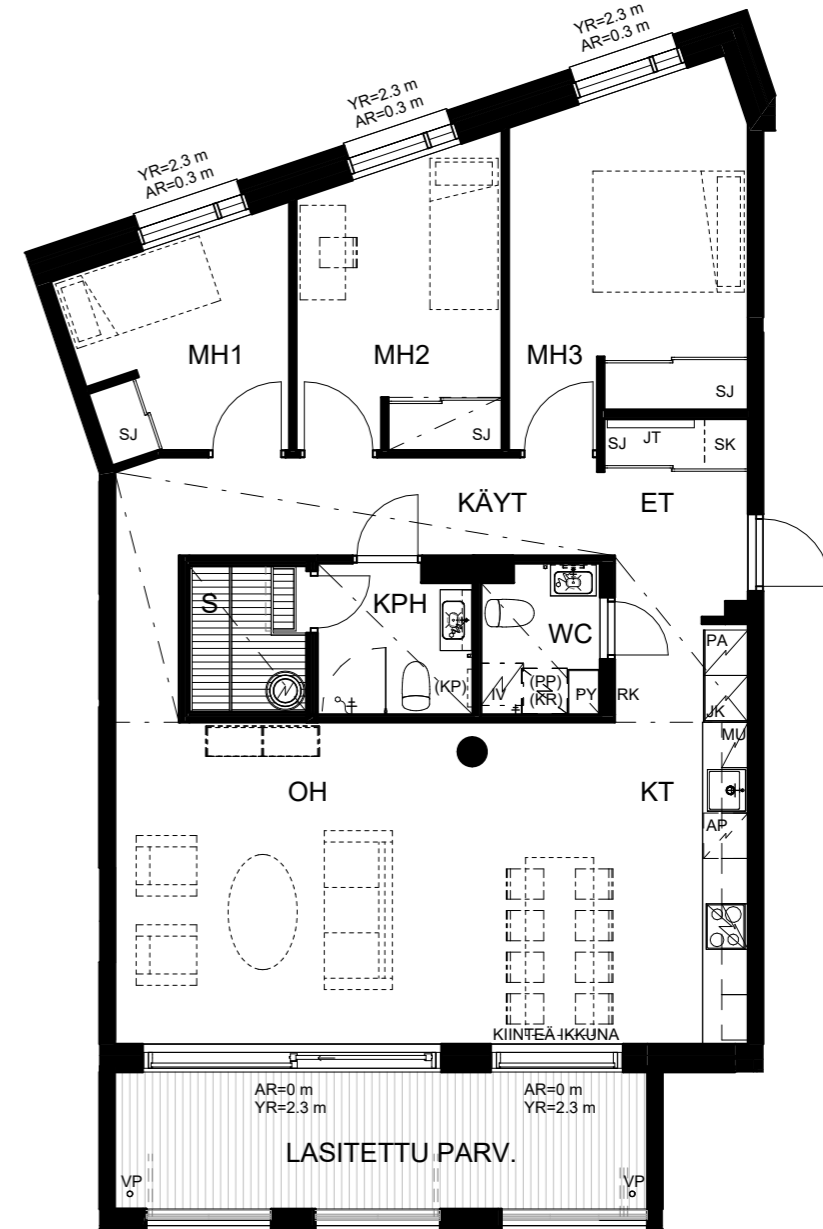
Alakerta

Yläkerta



### 4H+KT+S 99 m<sup>2</sup>

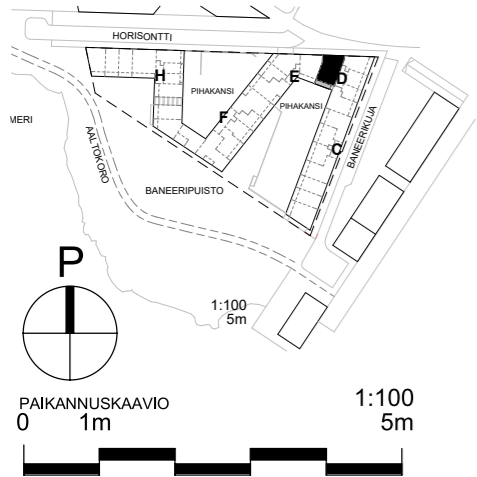
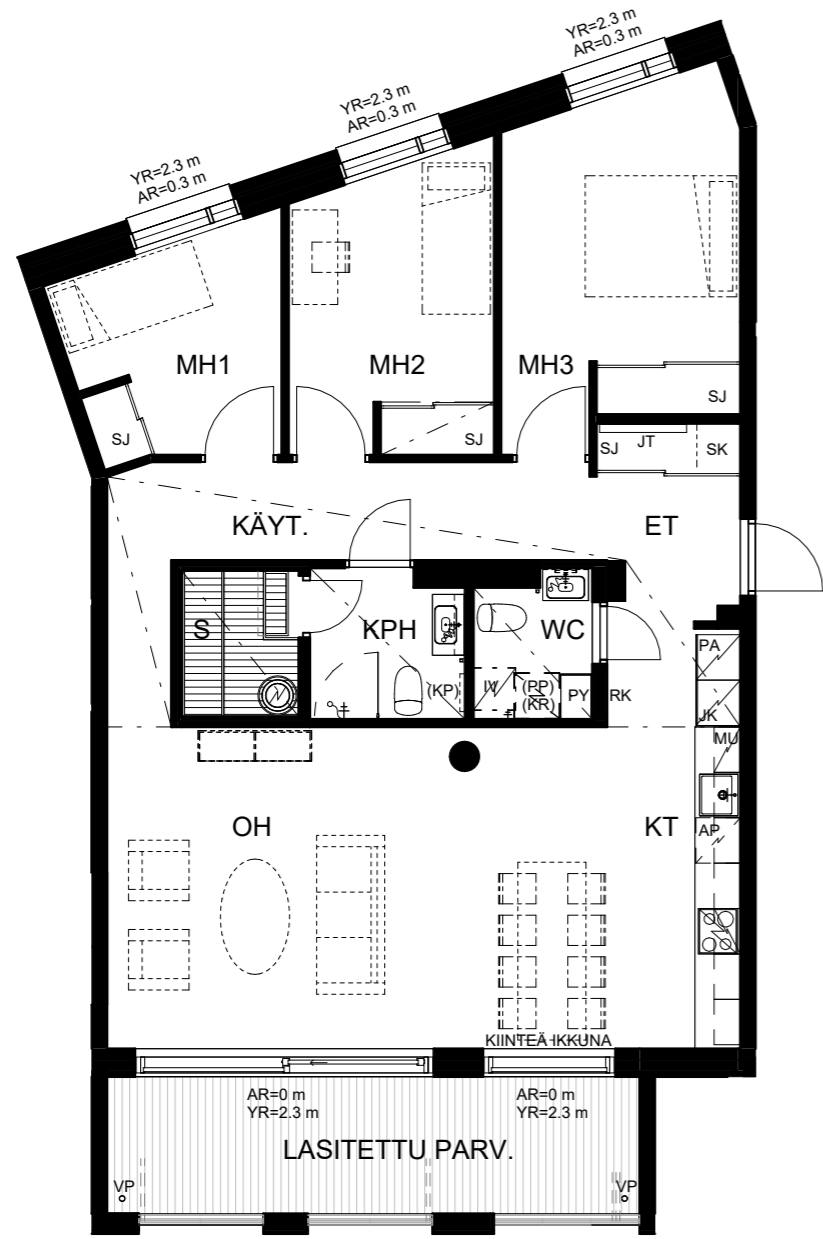
D19 1. krs



# 4H+KT+S 98,5 m<sup>2</sup>

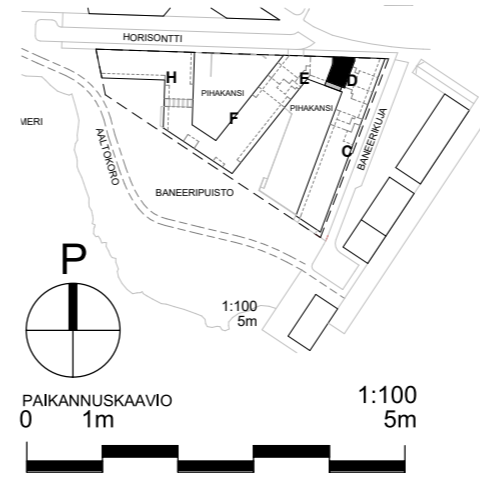
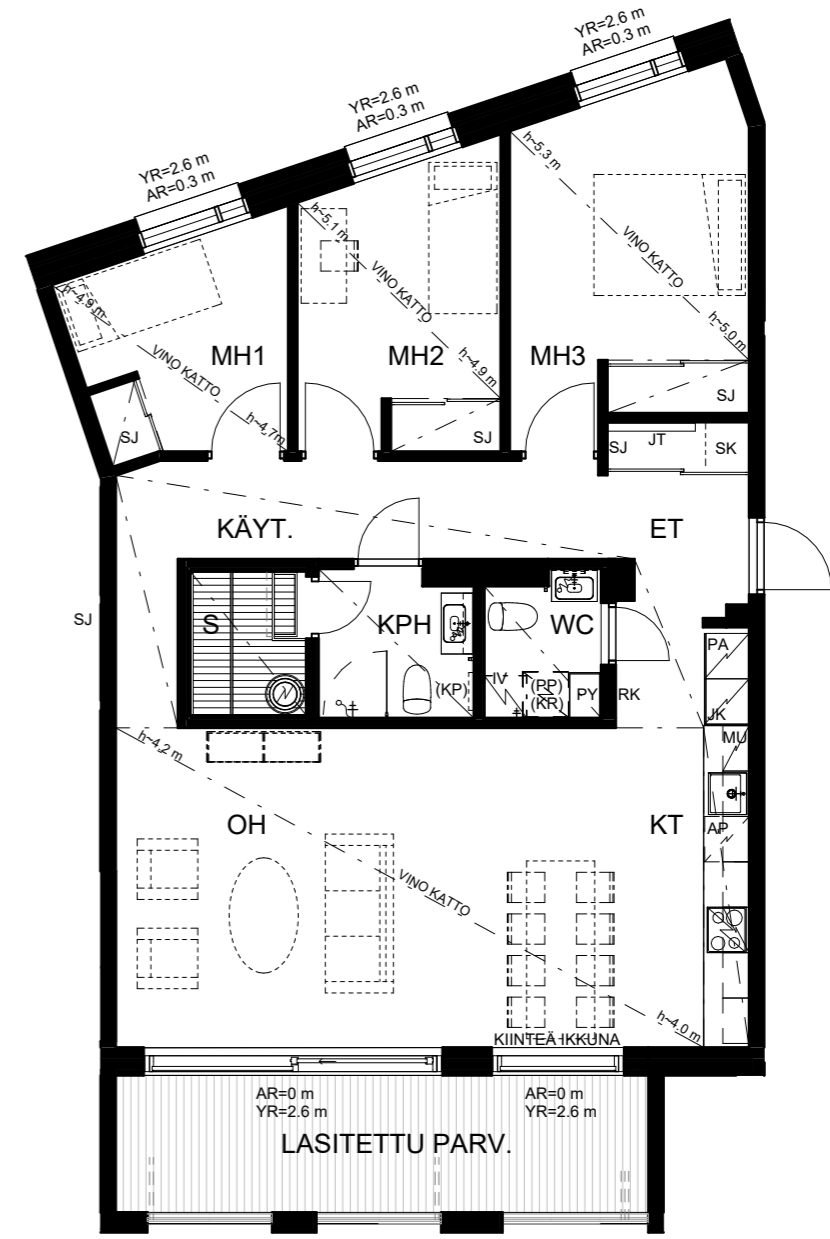
D20 2. krs

D25 3. krs



# 4H+KT+S 98,5 m<sup>2</sup>

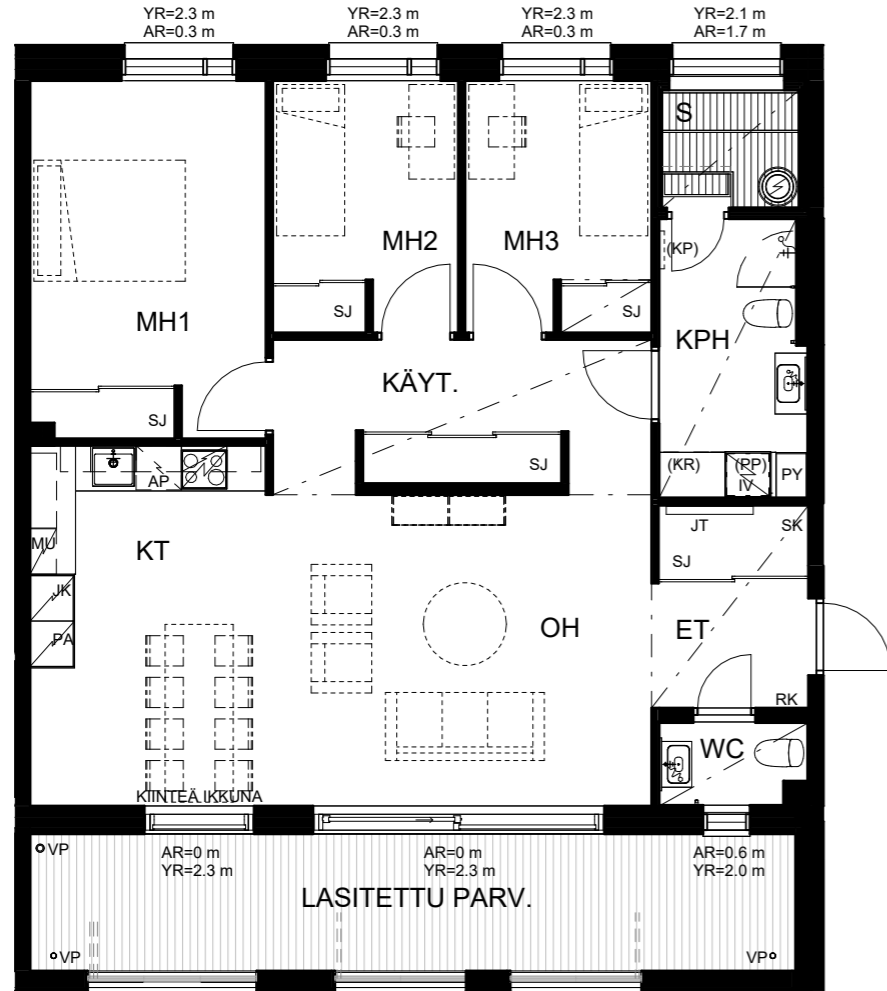
D30 4. krs





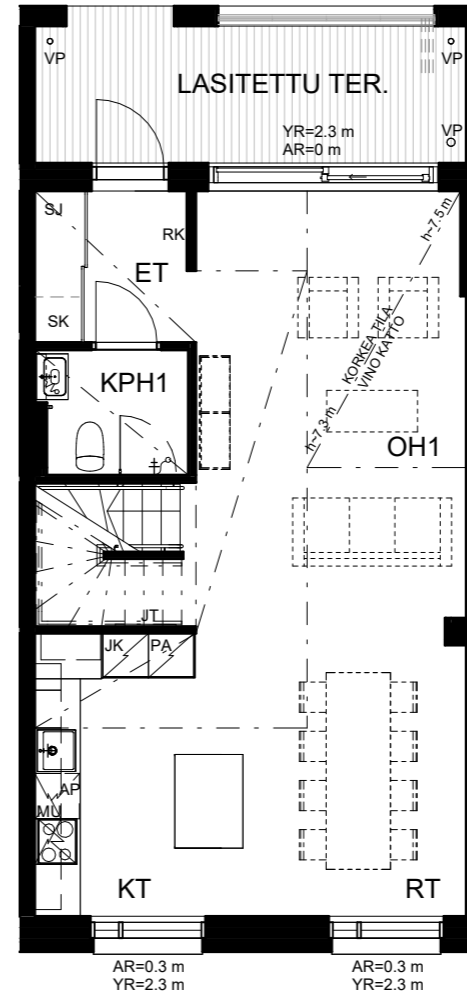
**4H+KT+S 97,5 m<sup>2</sup>**

H64 1. krs



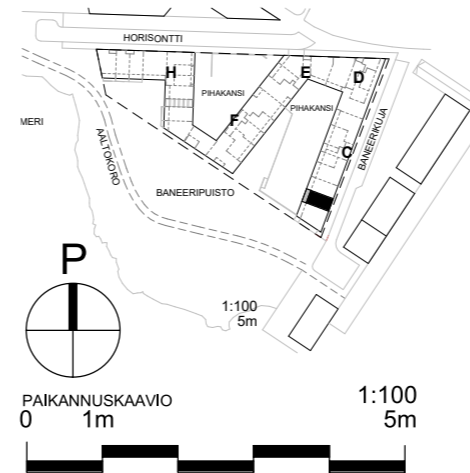
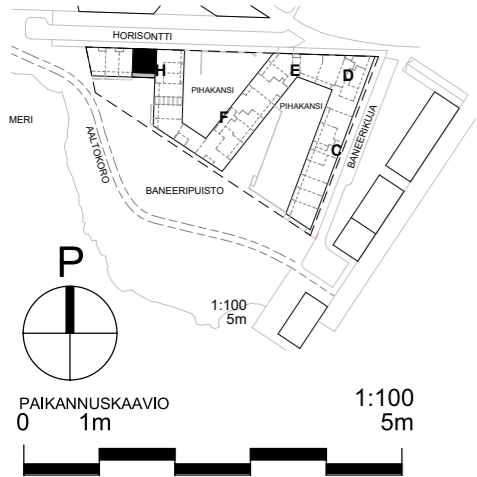
**3H+KT+S 97,5 m<sup>2</sup>**

B5 2. krs 50,5 m<sup>2</sup>  
3. krs 47,0 m<sup>2</sup>



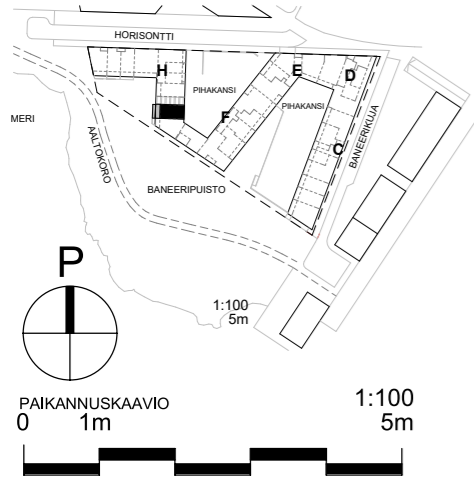
Alakerta

Yläkerta



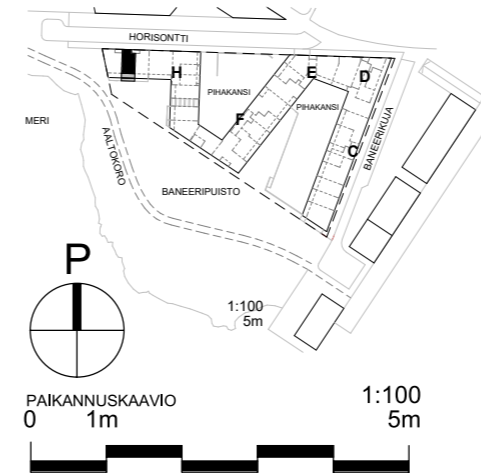
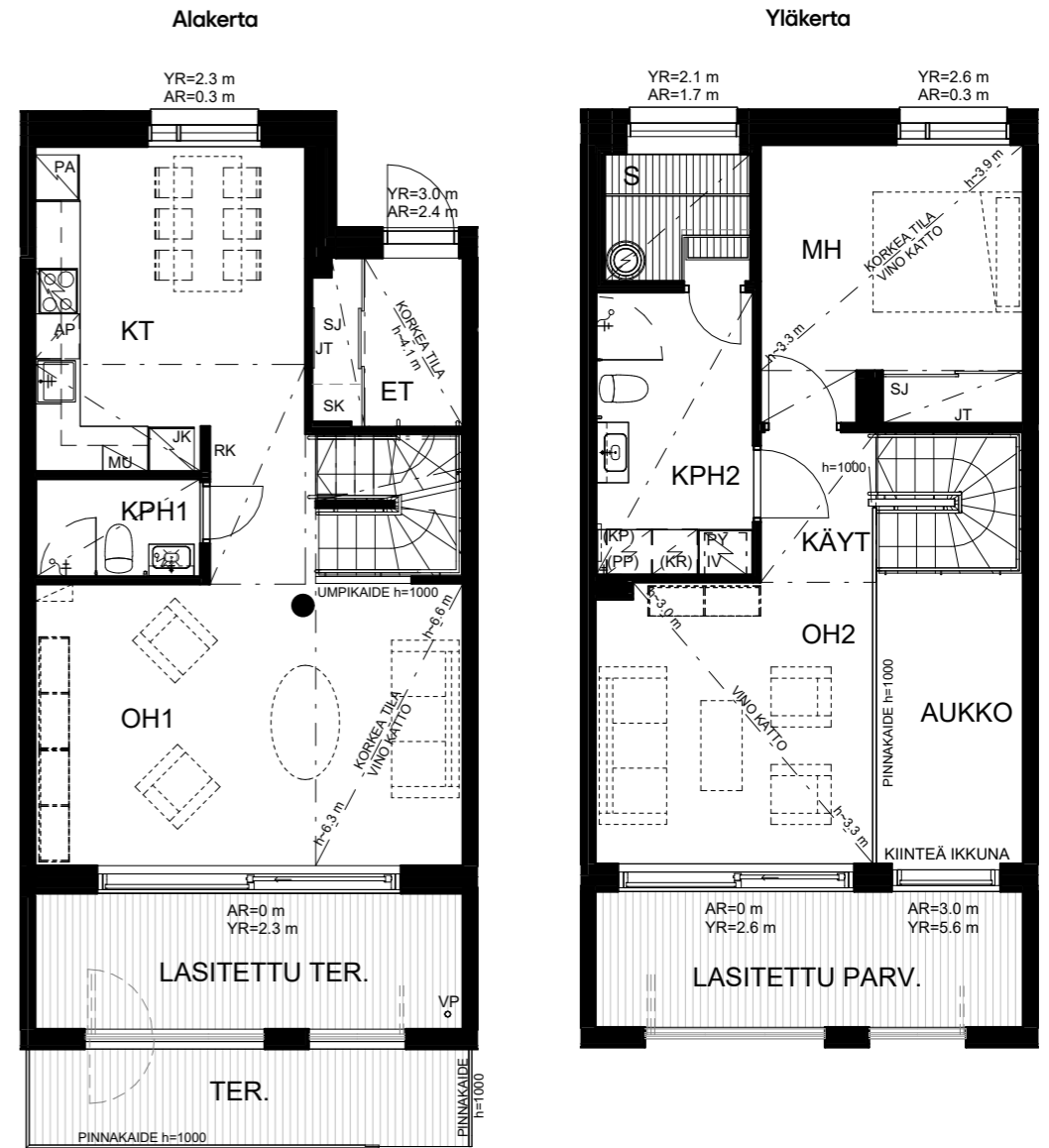
### 3H+KT+S 97,5 m<sup>2</sup>

G63 1. krs 50,5 m<sup>2</sup>  
2. krs 47,0 m<sup>2</sup>



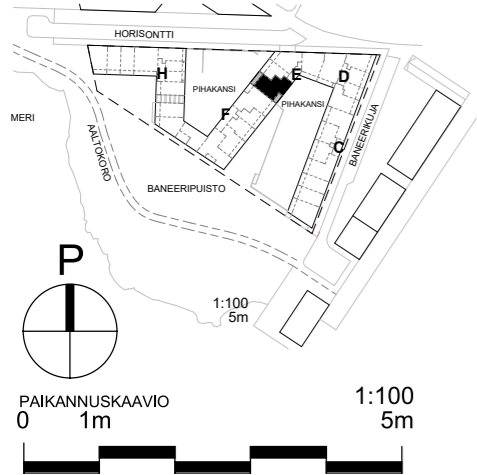
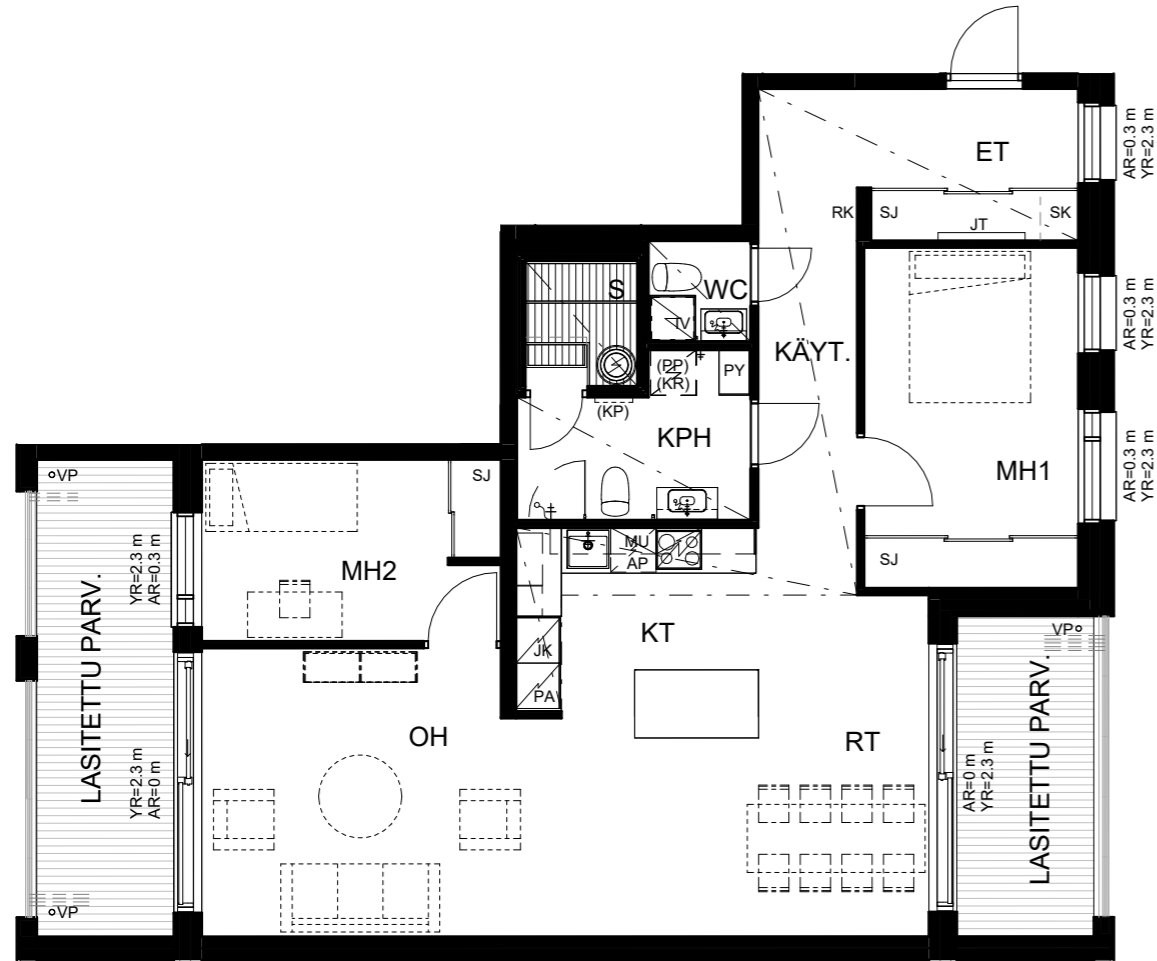
### 3H+KT+S 94 m<sup>2</sup>

I77 1. krs 47,5 m<sup>2</sup>  
2. krs 46,5 m<sup>2</sup>



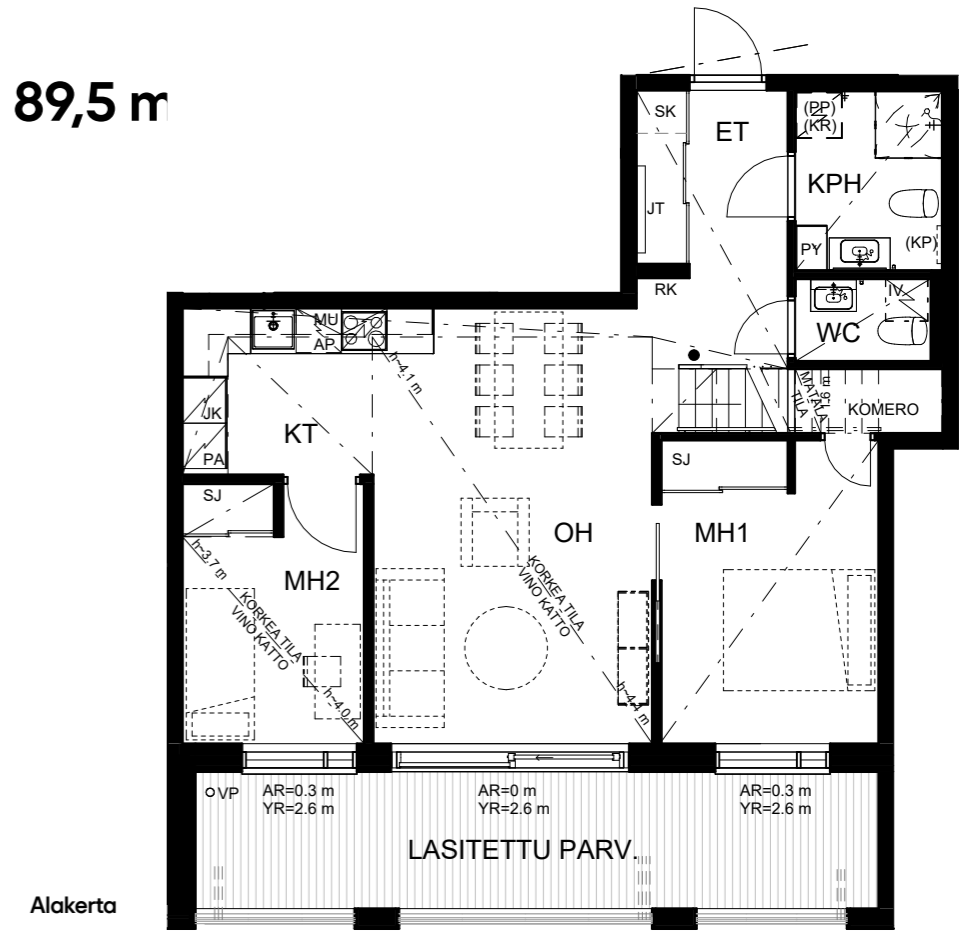
**3H+KT+S 93,5 m<sup>2</sup>**

E38 2. krs



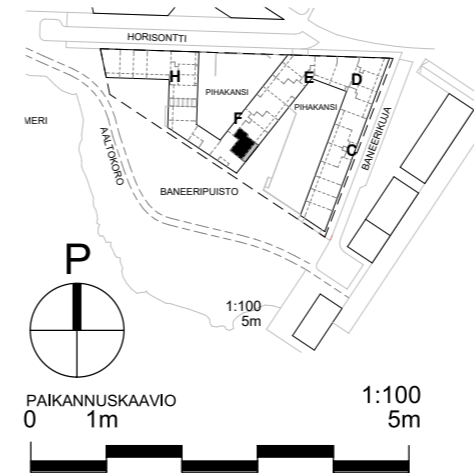
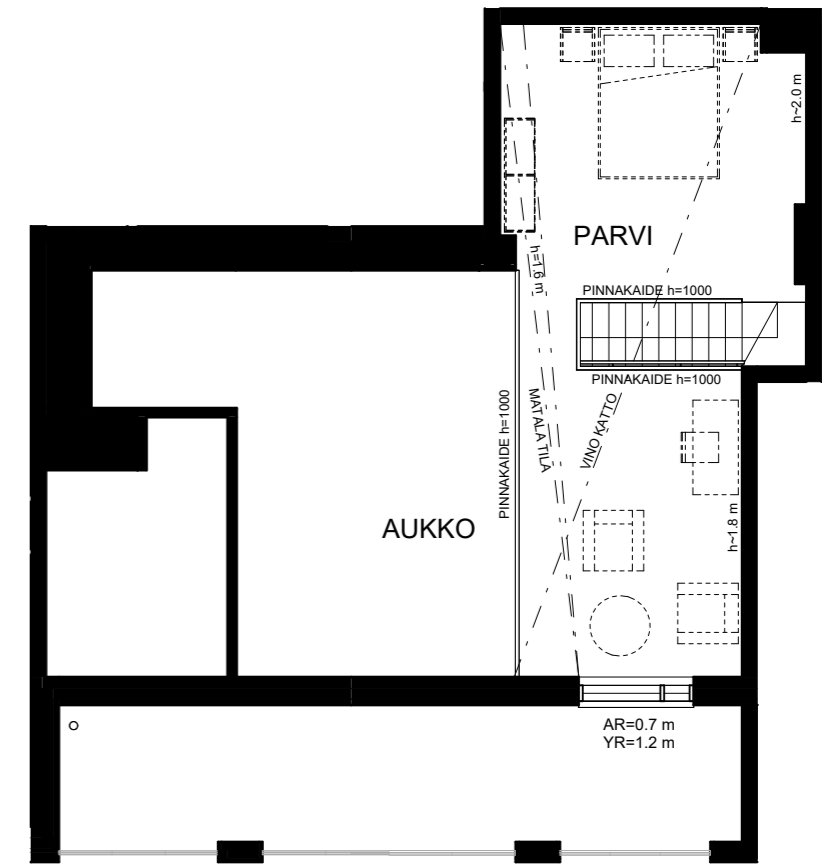
**3H+KT+PARVI 89,5 m<sup>2</sup>**

F57 2. krs 63,0 m<sup>2</sup>  
3. krs 26,5 m<sup>2</sup>



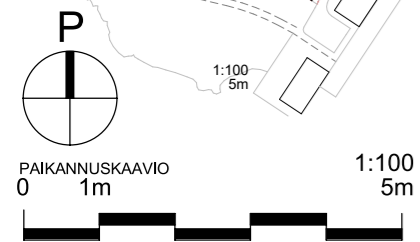
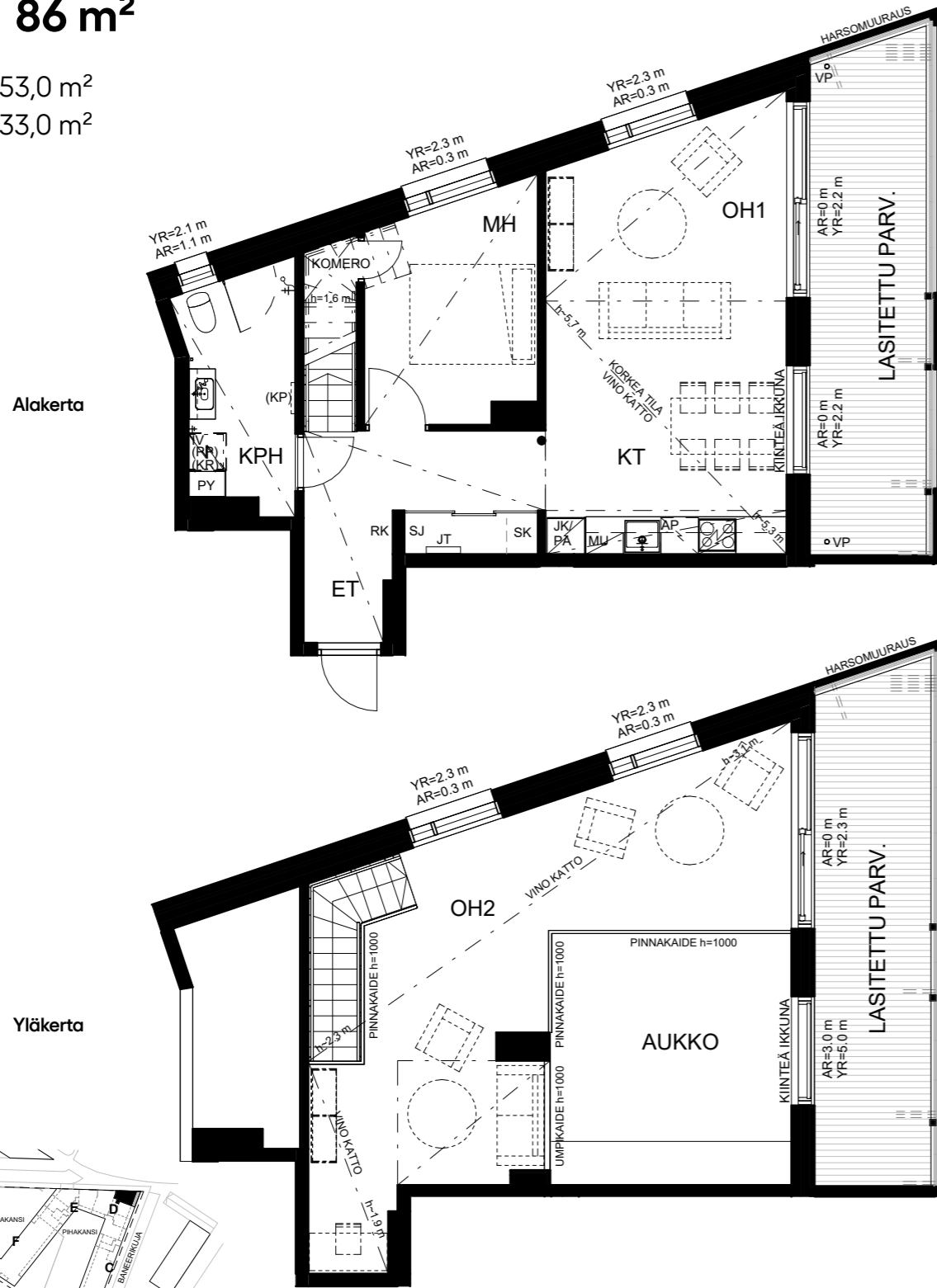
Alakerta

Yläkerta



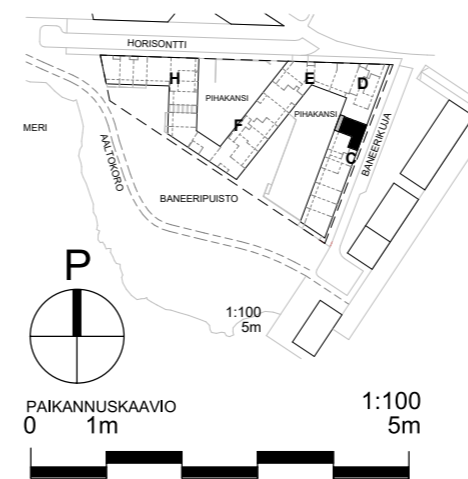
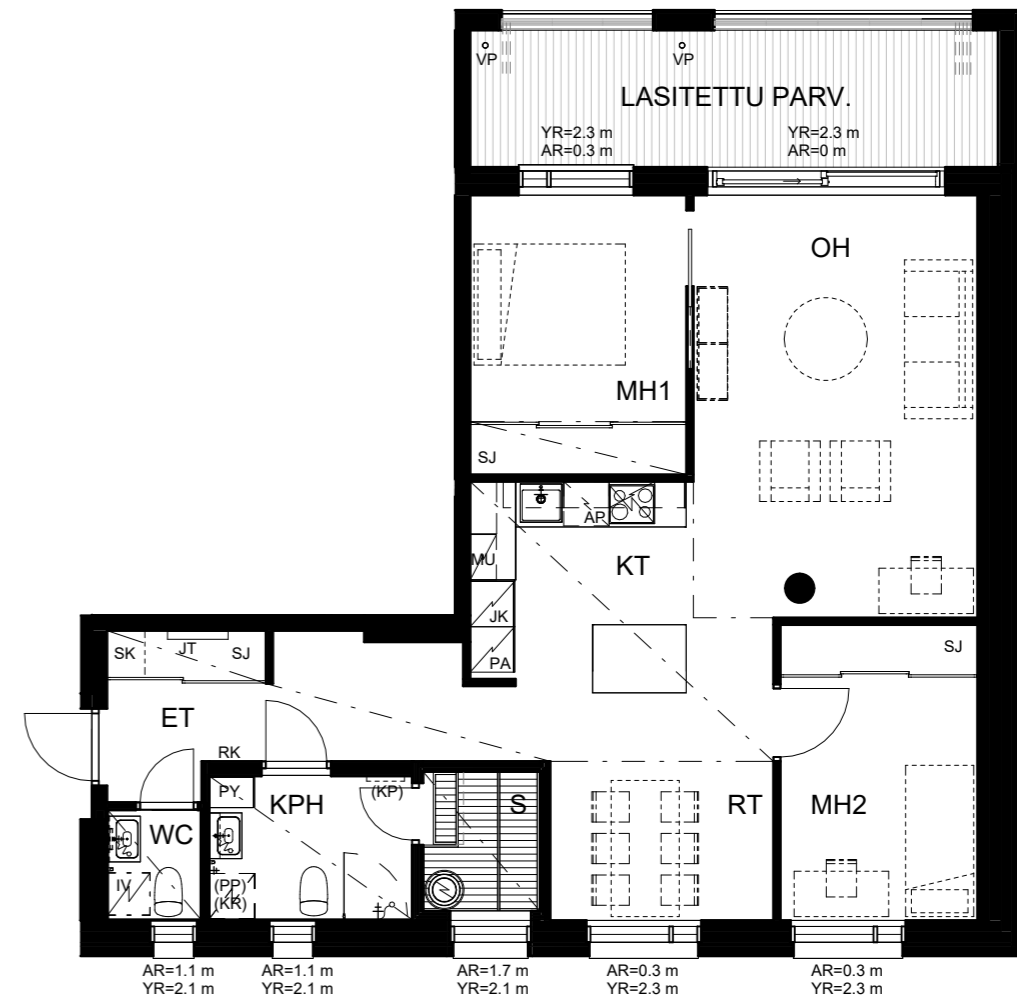
**3H+KT 86 m<sup>2</sup>**

D31 4. krs 53,0 m<sup>2</sup>  
5. krs 33,0 m<sup>2</sup>



**3H+KT+S 82,5 m<sup>2</sup>**

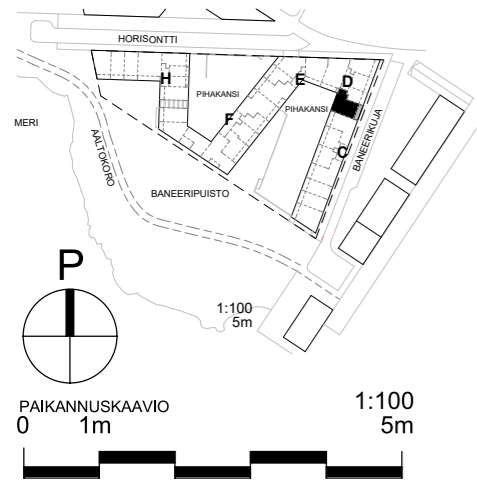
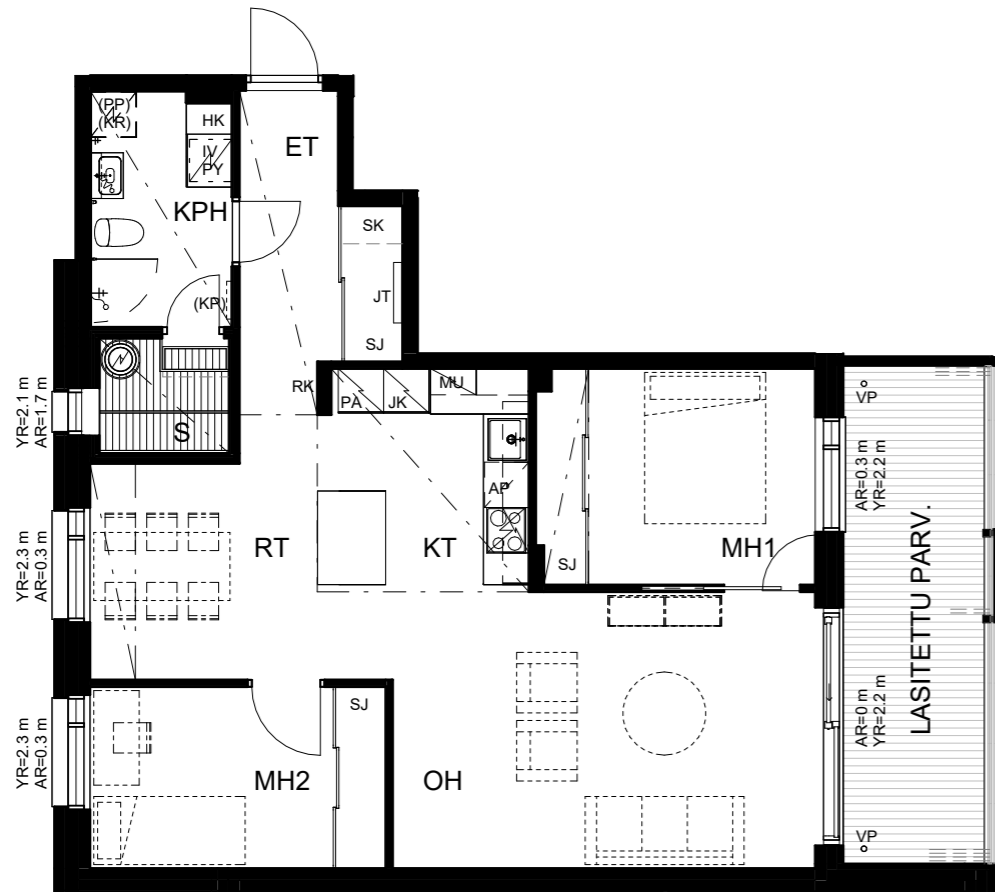
C10 2. krs



# 3H+KT+S 77 m<sup>2</sup>

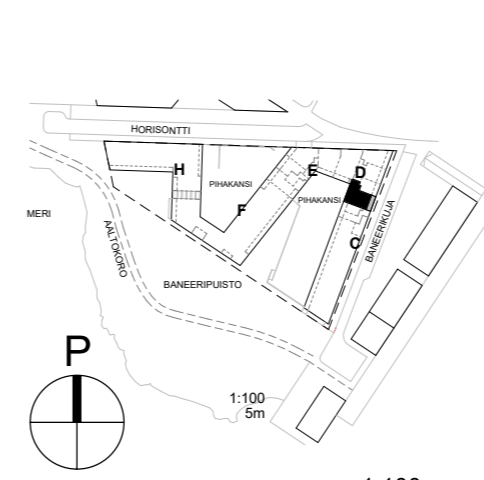
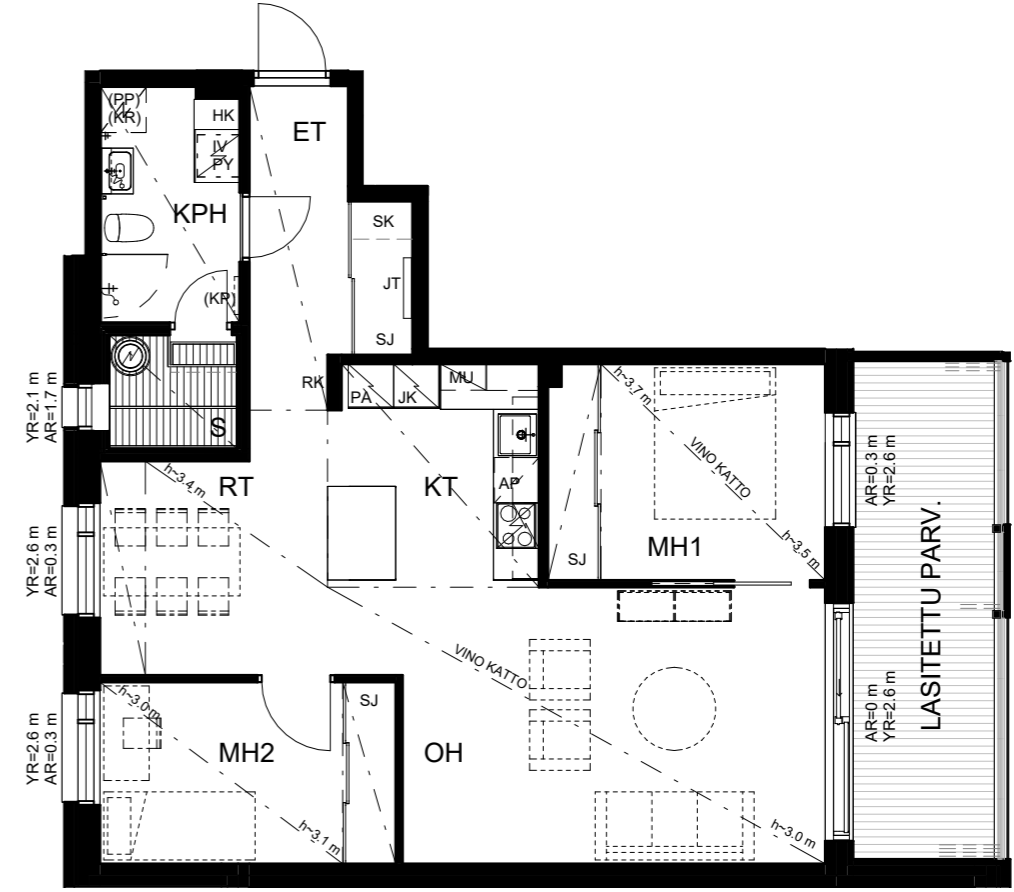
D24 2. krs

D29 3. krs



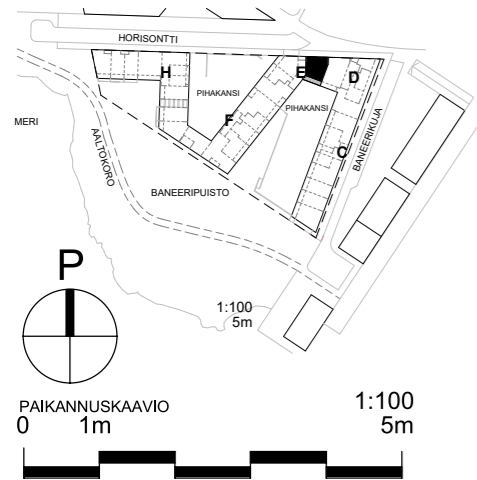
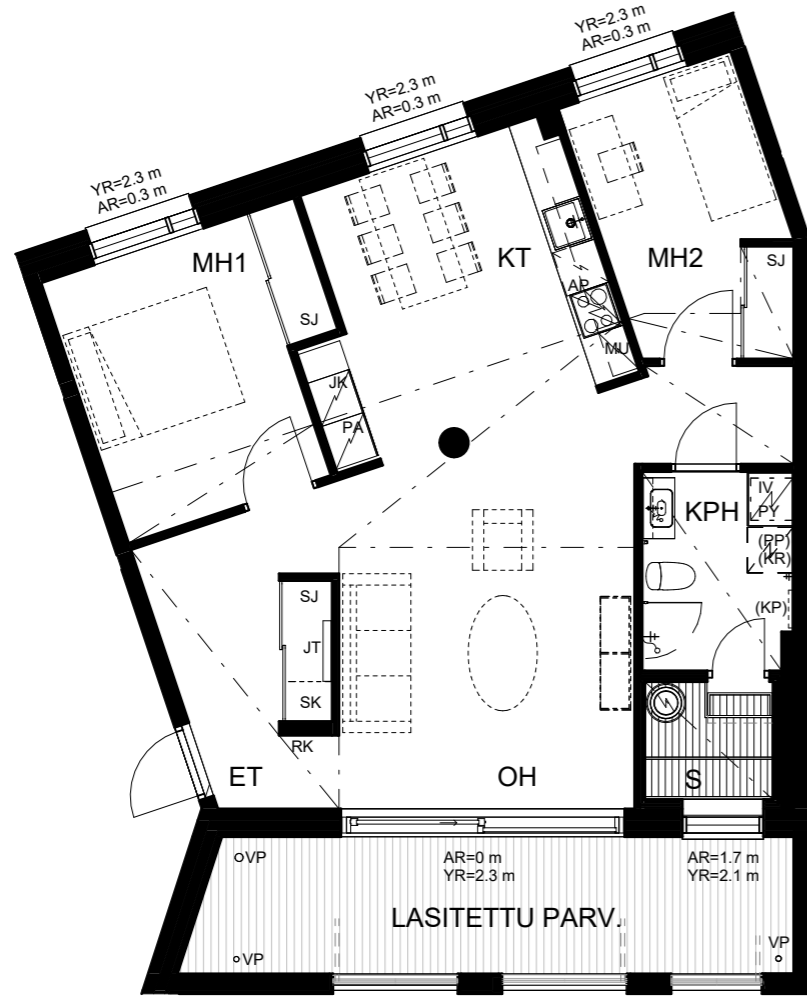
# 3H+KT+S 77 m<sup>2</sup>

D34 4. krs



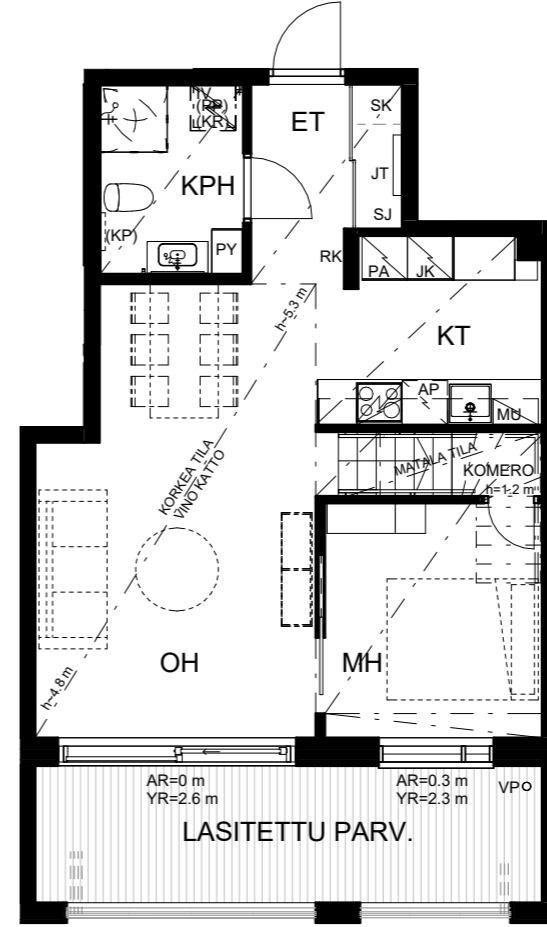
**3H+KT+S 76 m<sup>2</sup>**

E37 1. krs  
E41 2. krs

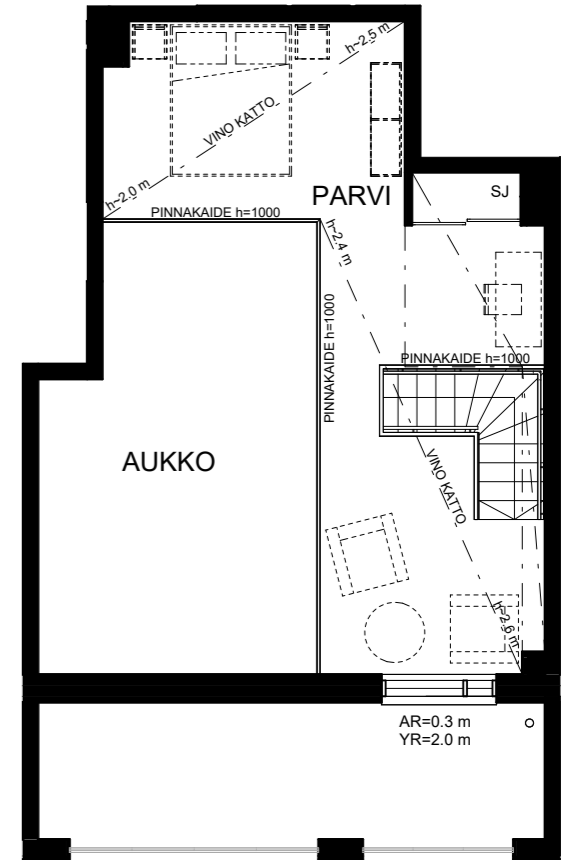


**2H+KT+PARVI 76 m<sup>2</sup>**

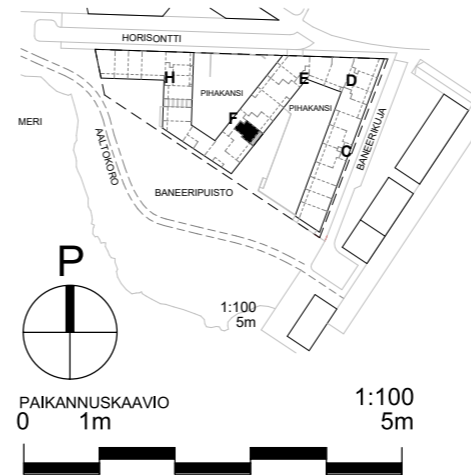
F56 2. krs 46,5 m<sup>2</sup>  
3. krs 29,5 m<sup>2</sup>



Alakerta



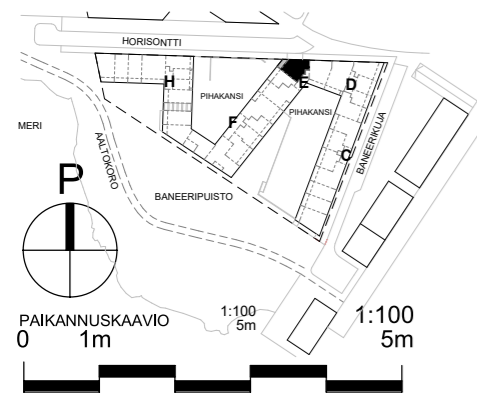
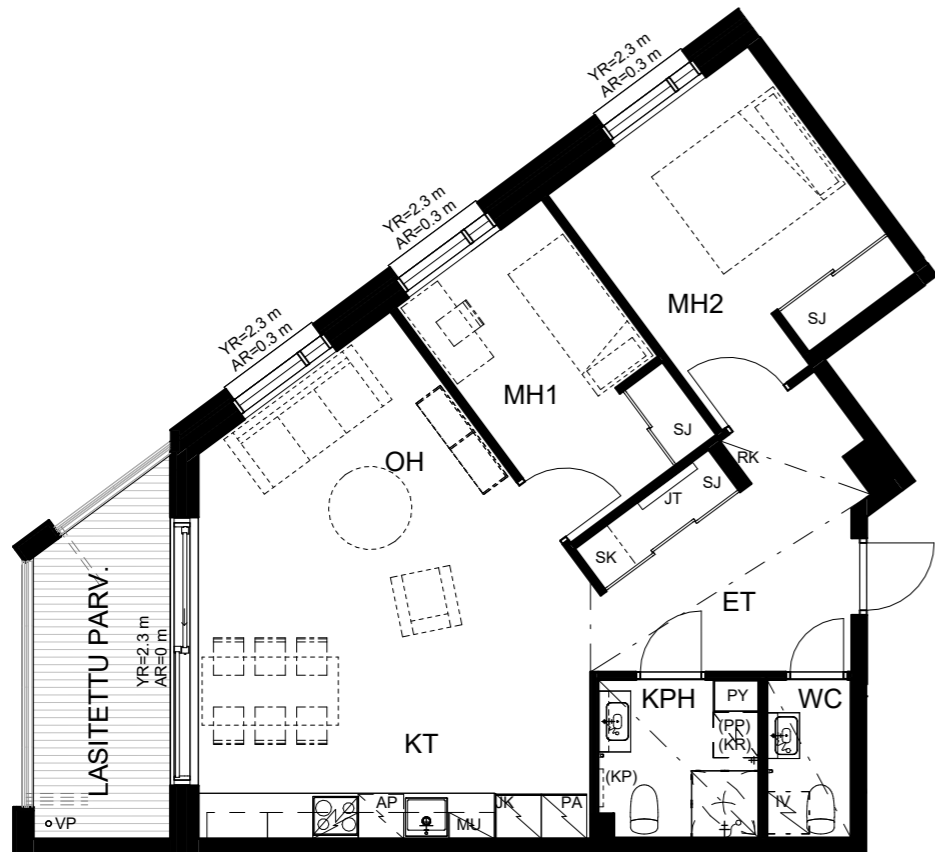
Yläkerta



Huoneistopohjat 1:100

# 3H+KT 70 m<sup>2</sup>

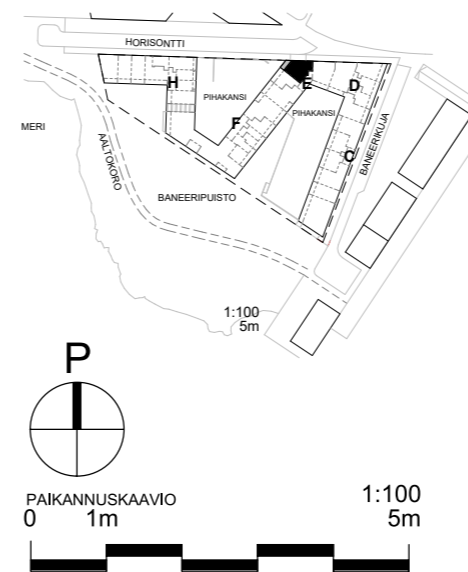
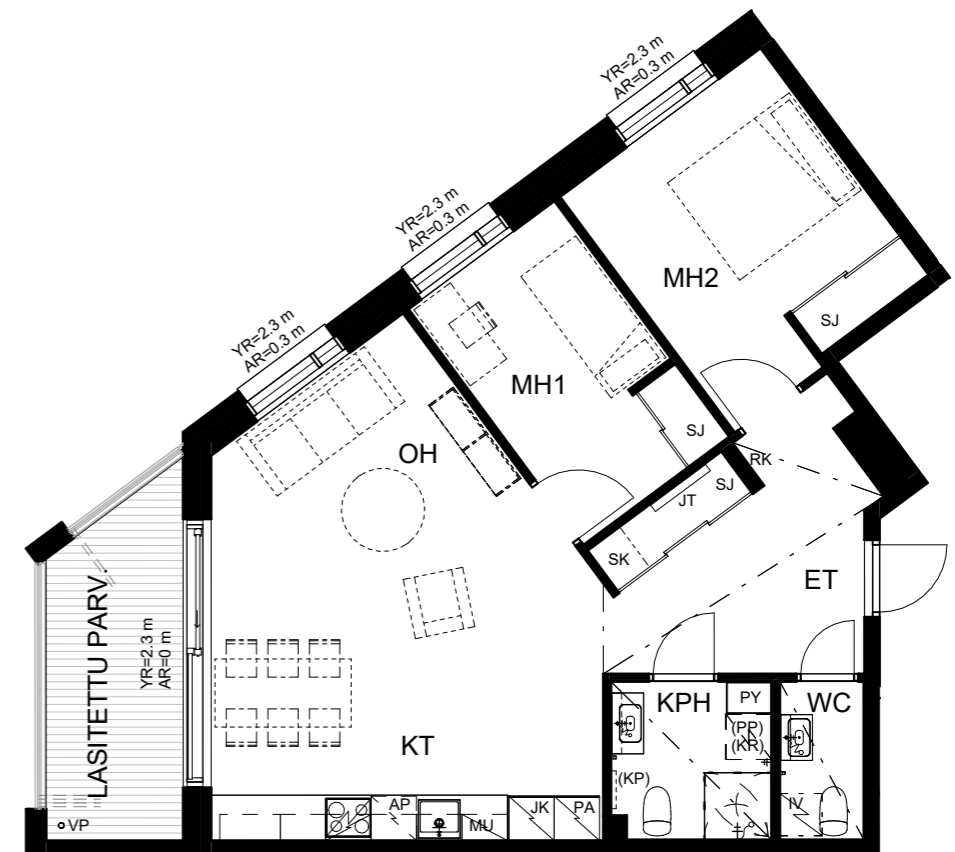
E40 2. krs



Huoneistopohjat 1:100

# 3H+KT 69,5 m<sup>2</sup>

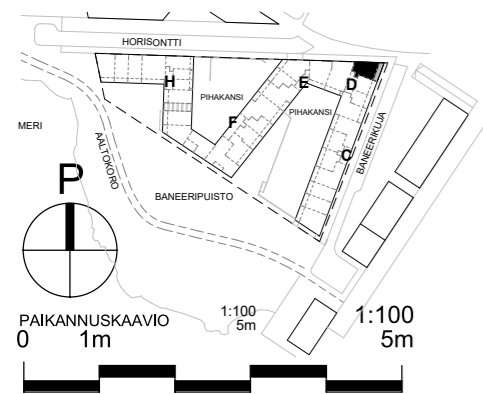
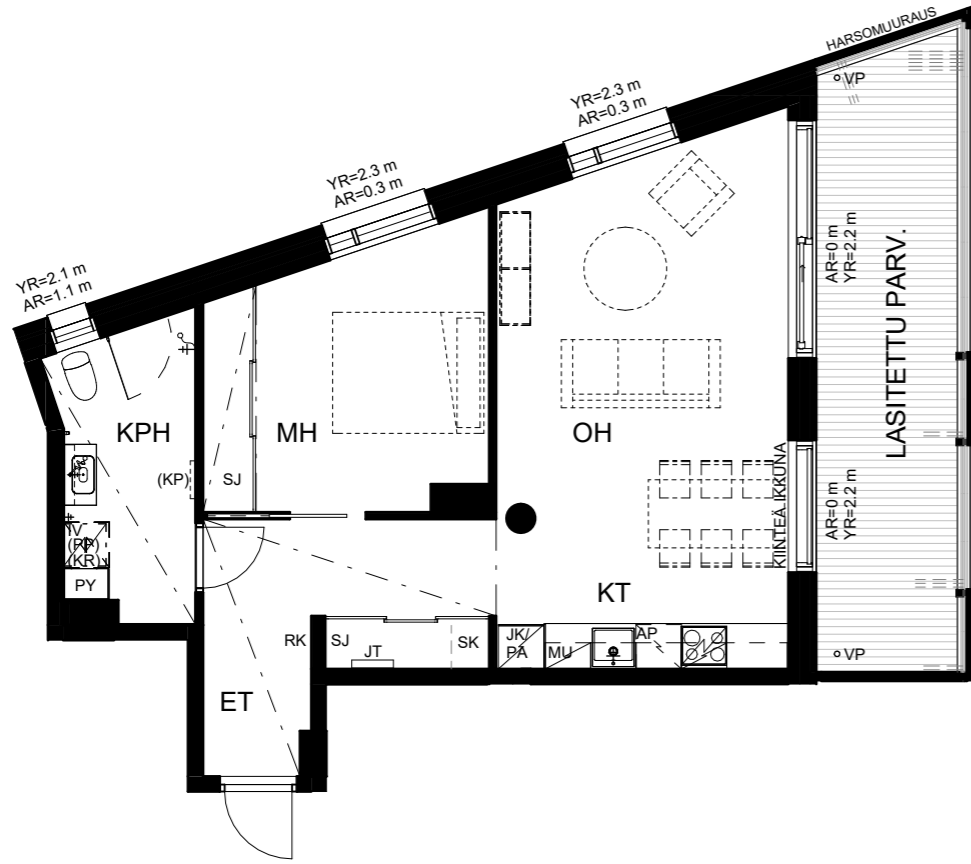
E44 3. krs



# 2H+KT 56 m<sup>2</sup>

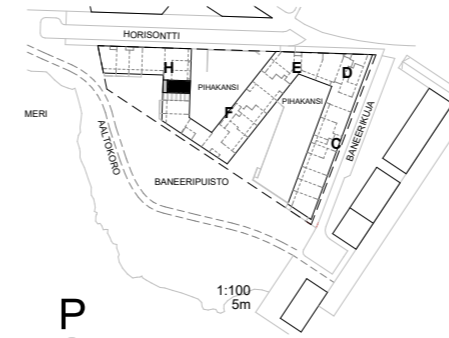
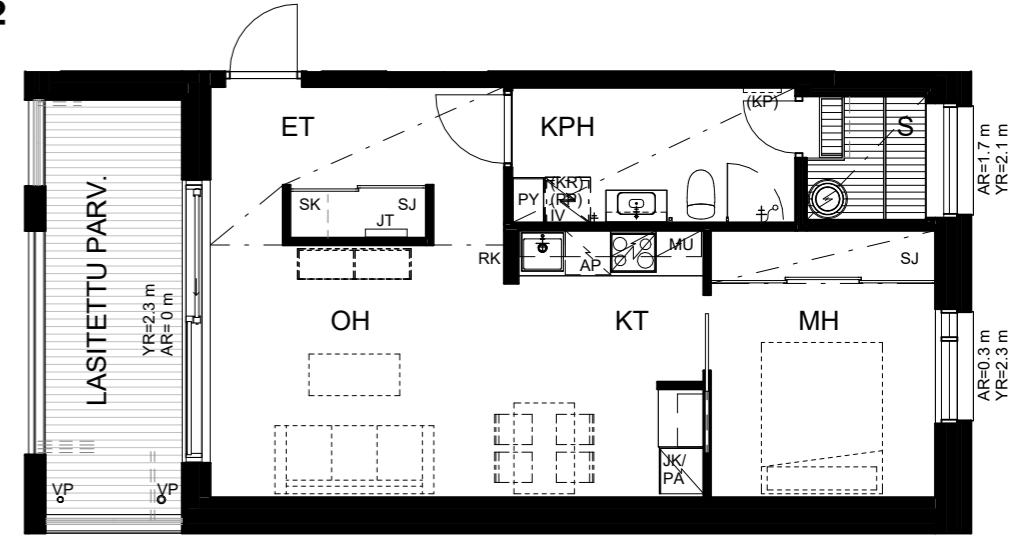
D21 2. krs

D26 3. krs



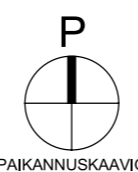
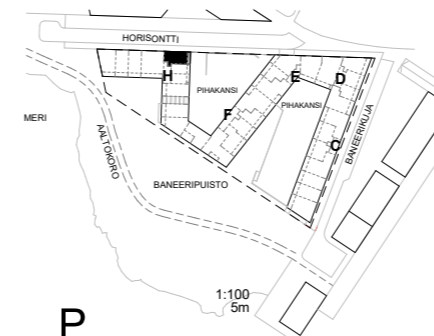
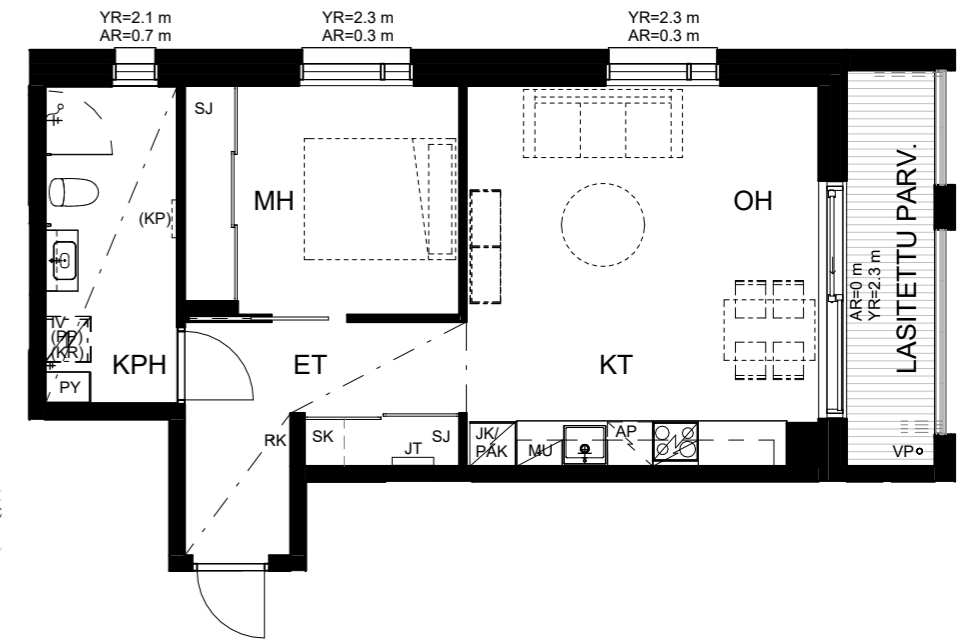
# 2H+KT+S 52 m<sup>2</sup>

H67 1. krs



# 2H+KT 51,5 m<sup>2</sup>

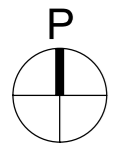
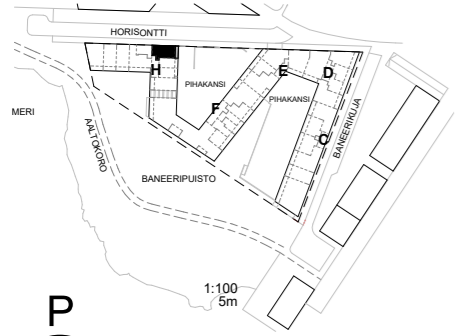
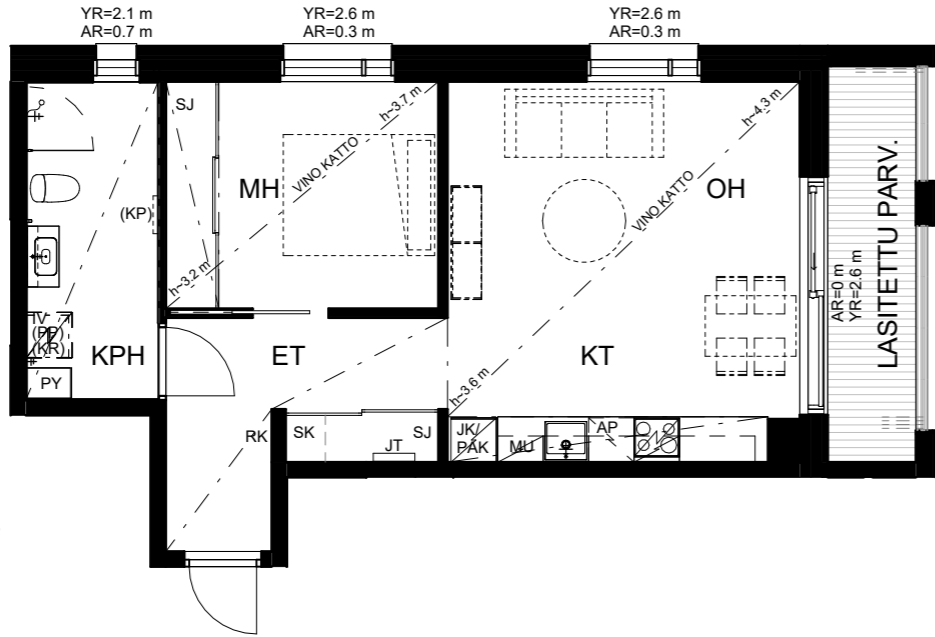
H69 2. krs





# 2H+KT 51,5 m<sup>2</sup>

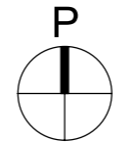
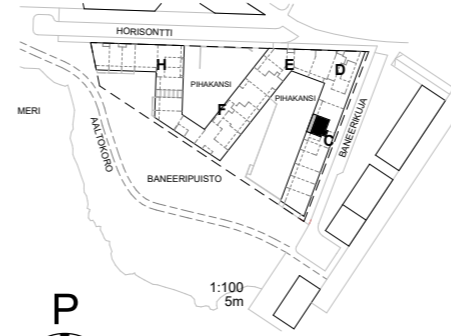
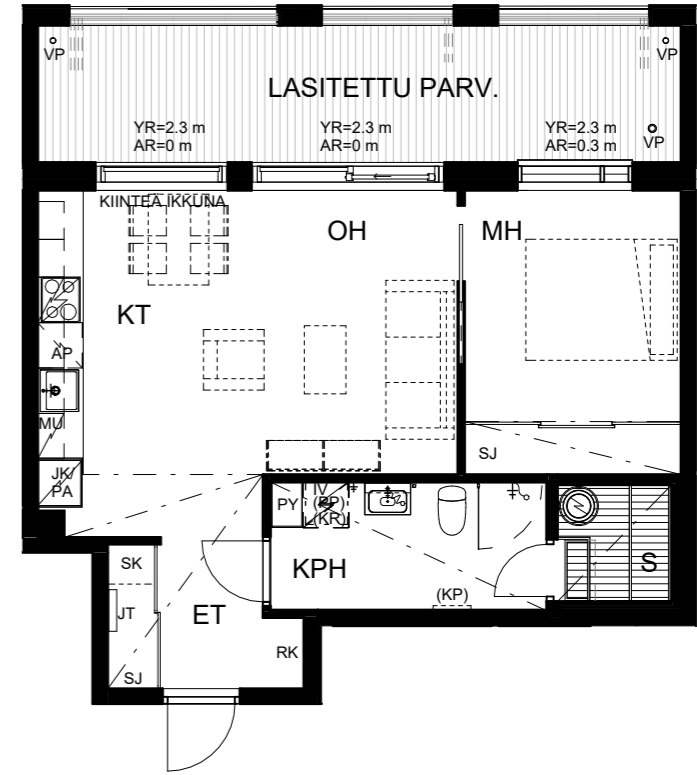
H73 3. krs



PAIKANNUSKAAVIO

# 2H+KT+S 49 m<sup>2</sup>

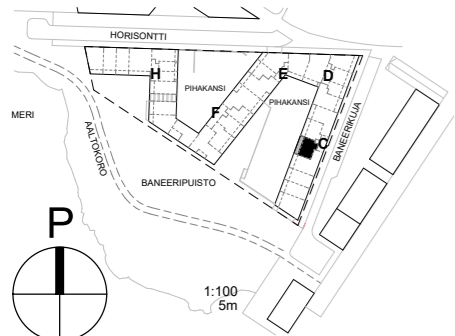
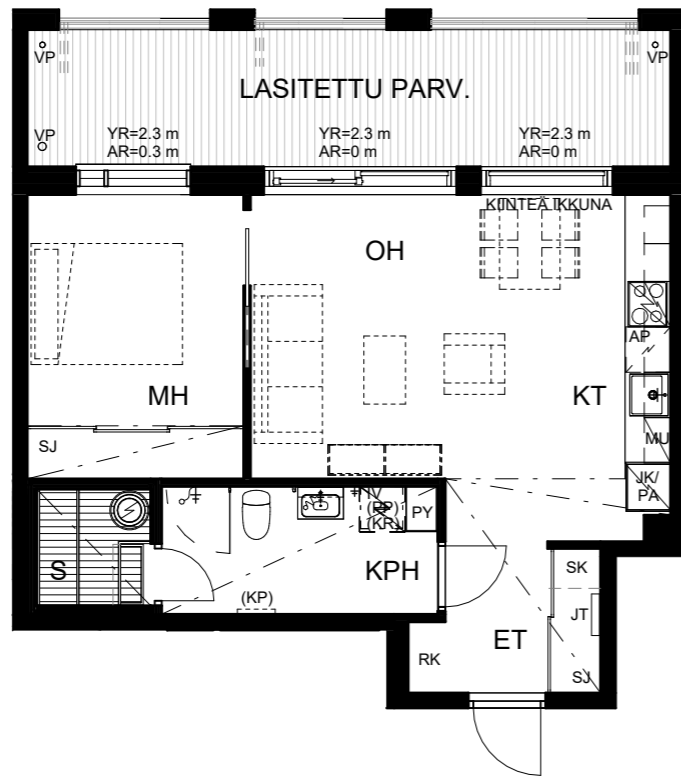
C13 3. krs



PAIKANNUSKAAVIO

# 2H+KT+S 49 m<sup>2</sup>

C12 3. krs



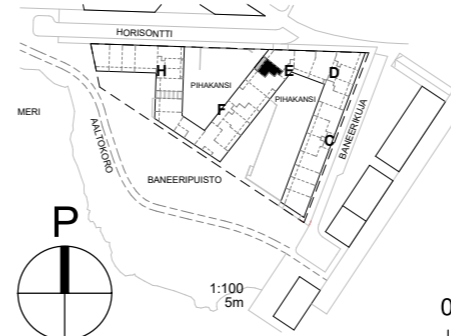
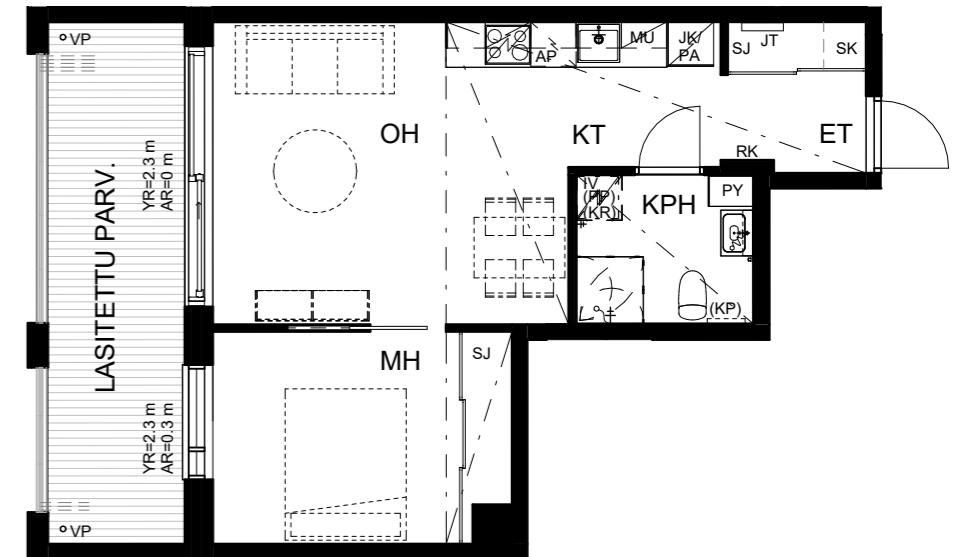
PAIKANNUSKAAVIO

# 32



# 2H+KT 43 m<sup>2</sup>

E39 2. krs



PAIKANNUSKAAVIO

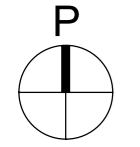
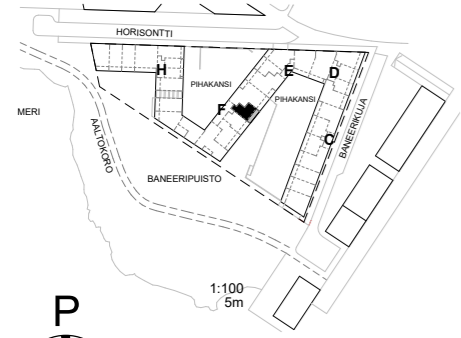


# 33

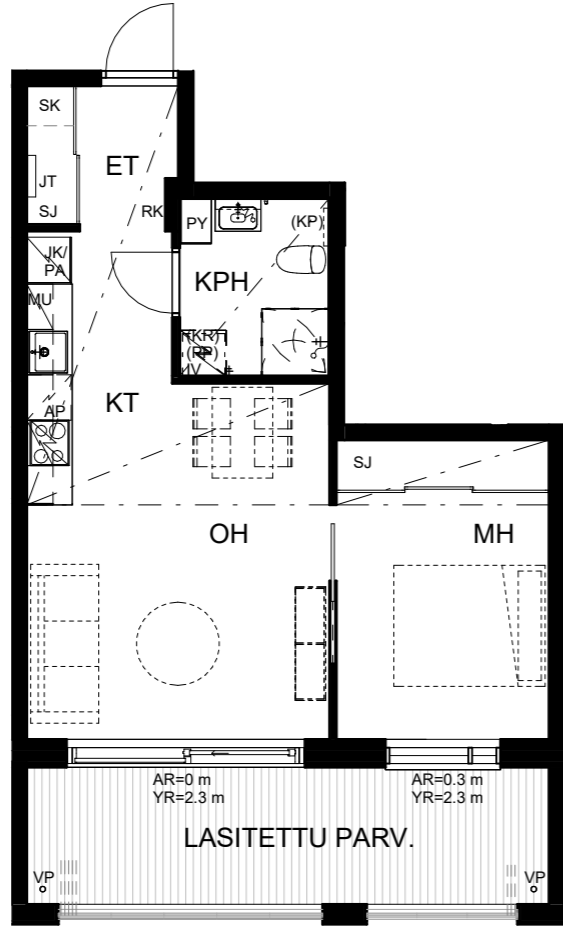
Huoneistopohjat 1:100

2H+KT 43 m<sup>2</sup>

F55 2. krs



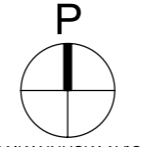
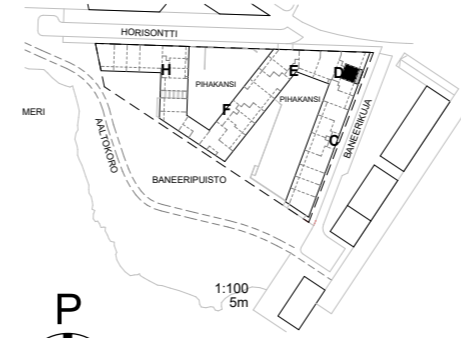
PAIKANNUSKAAVIO



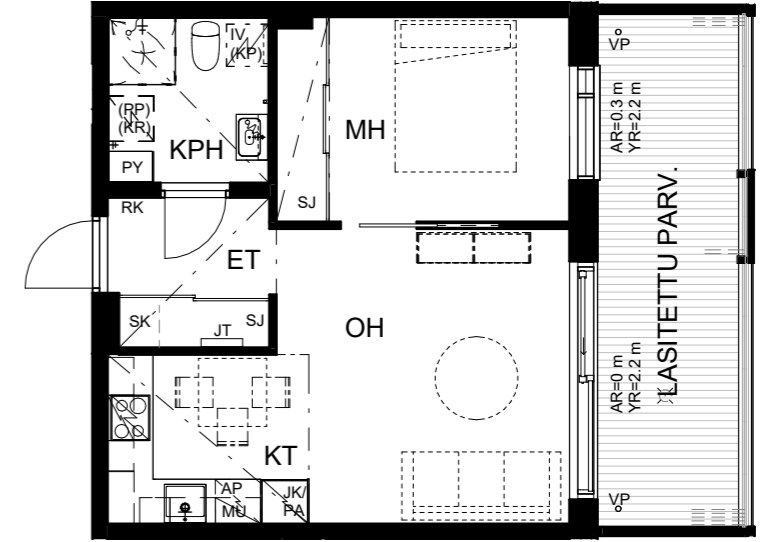
Huoneistopohjat 1:100

2H+KT 40,5 m<sup>2</sup>

D27 3. krs

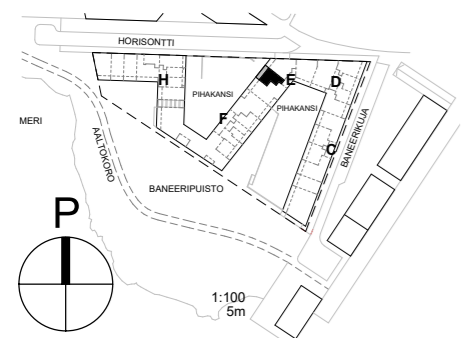


PAIKANNUSKAAVIO

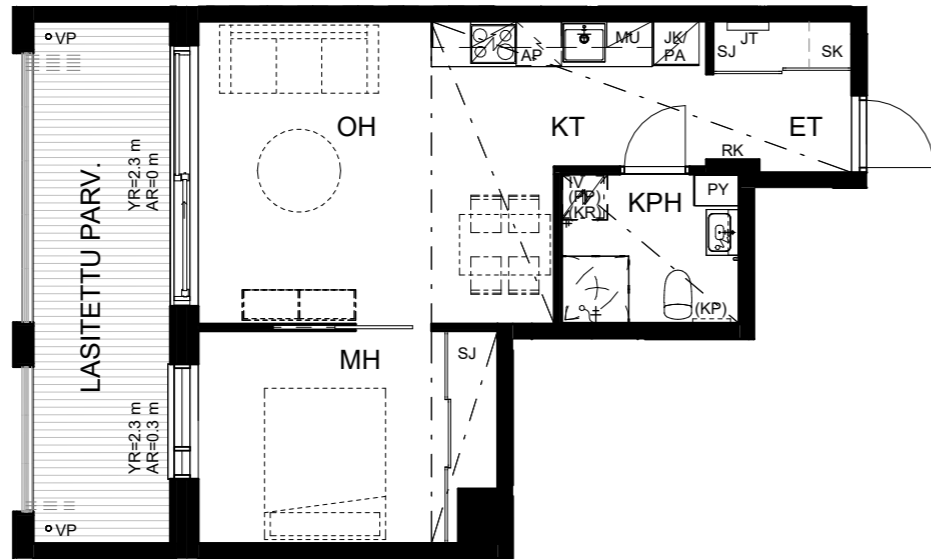


2H+KT 42,5 m<sup>2</sup>

E43 3. krs

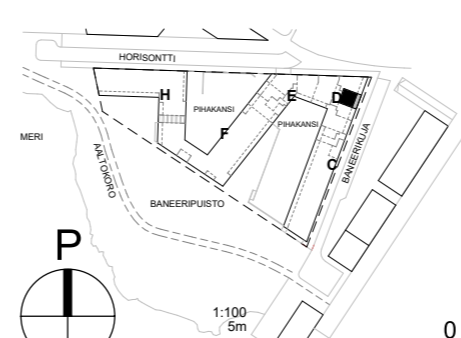


PAIKANNUSKAAVIO

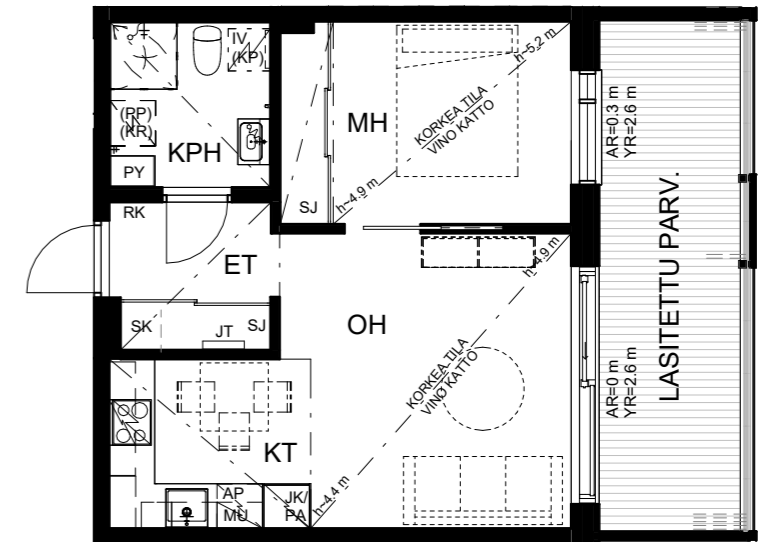


2H+KT 40,5 m<sup>2</sup>

D32 4. krs



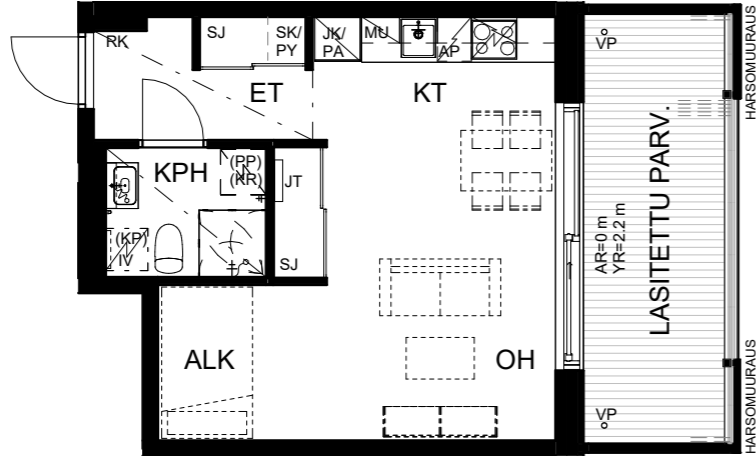
PAIKANNUSKAAVIO



Huoneistopohjat 1:100

# 1H+KT 32 m<sup>2</sup>

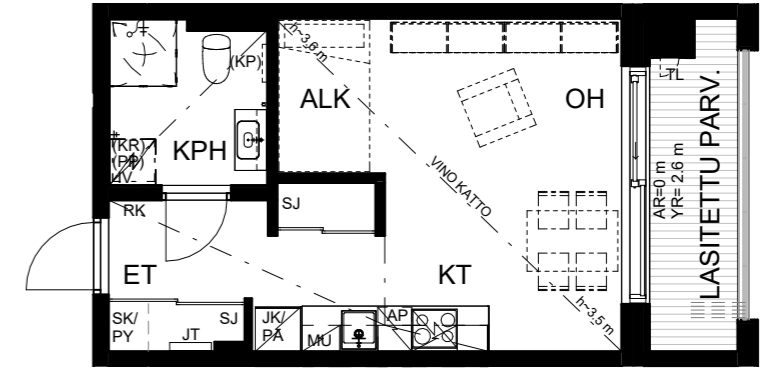
D28 3. krs



Huoneistopohjat 1:100

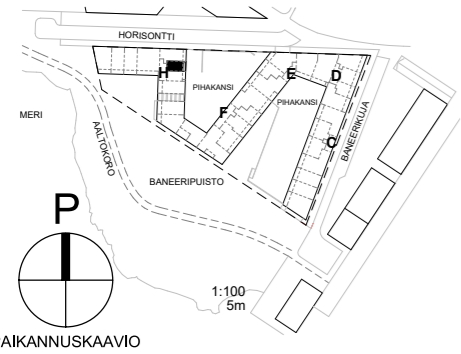
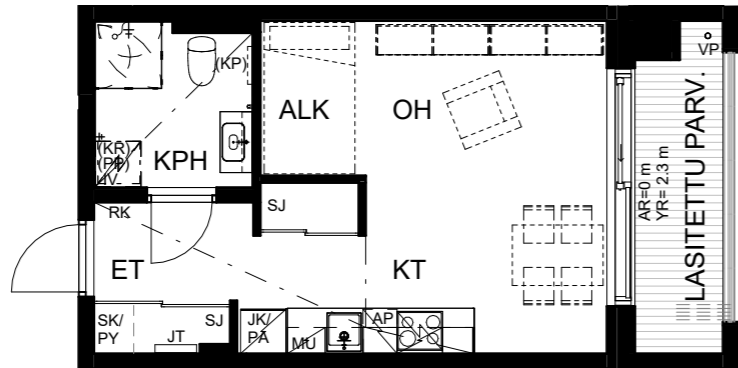
# 1H+KT 29,5 m<sup>2</sup>

H74 3. krs



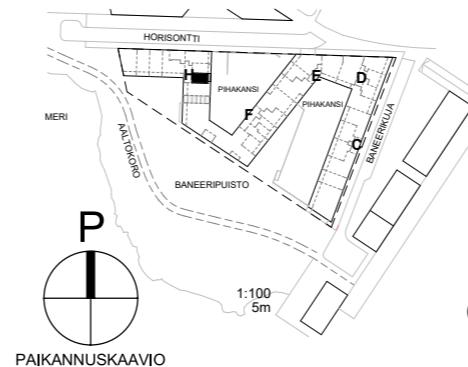
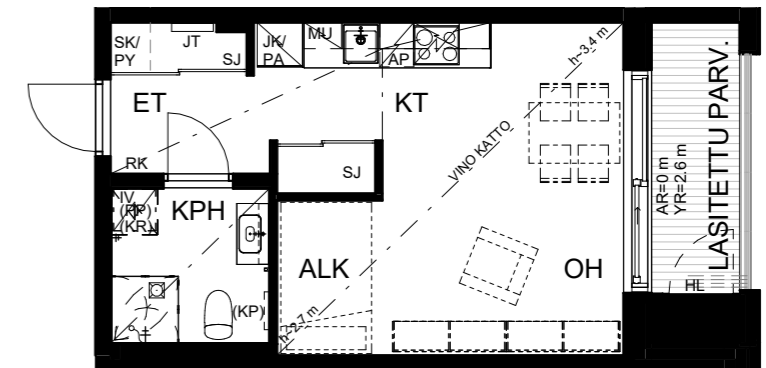
# 1H+KT 29,5 m<sup>2</sup>

H70 2. krs

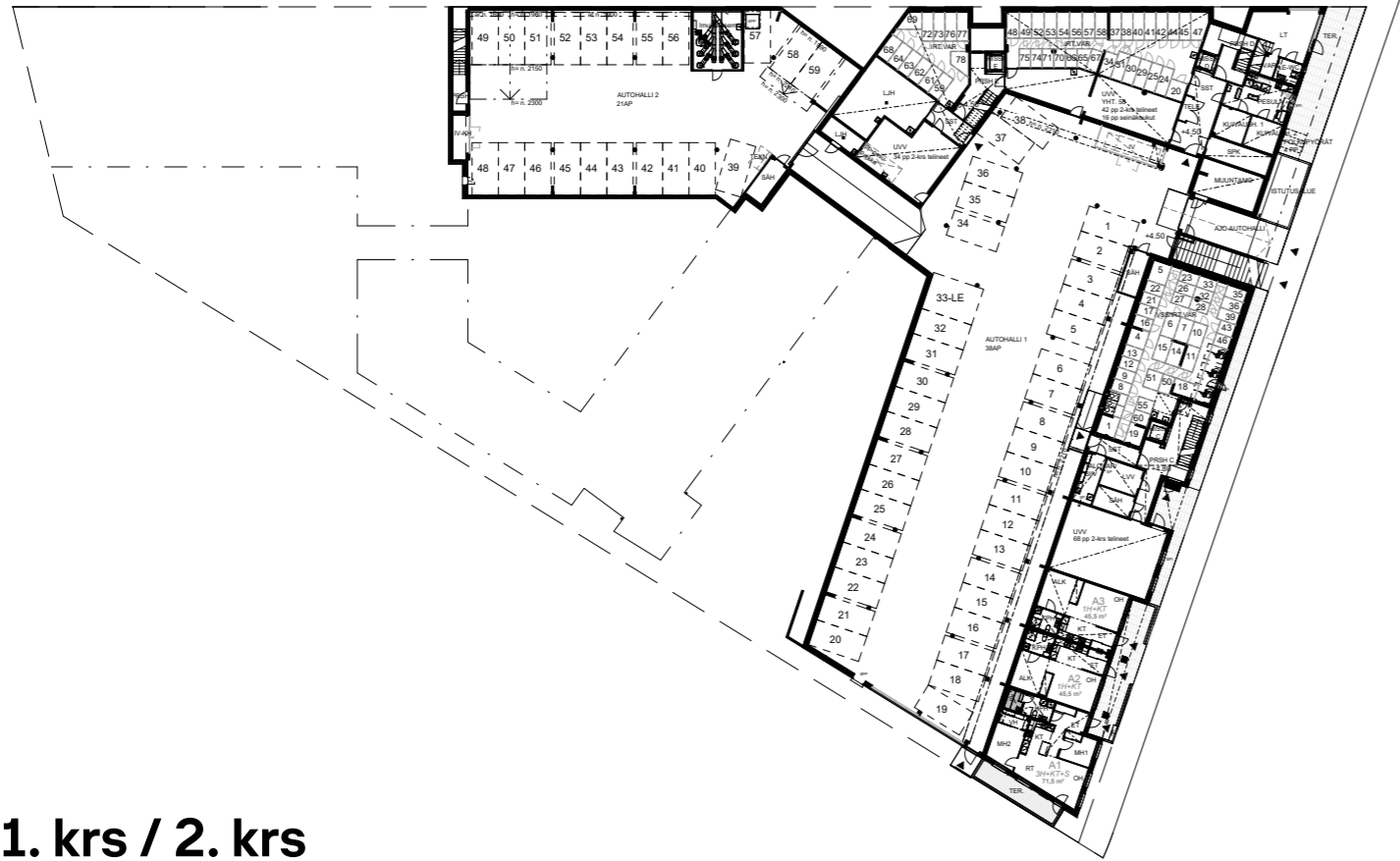


# 1H+KT 29,5 m<sup>2</sup>

H75 3. krs



Kellari / 1. krs



1. krs / 2. krs



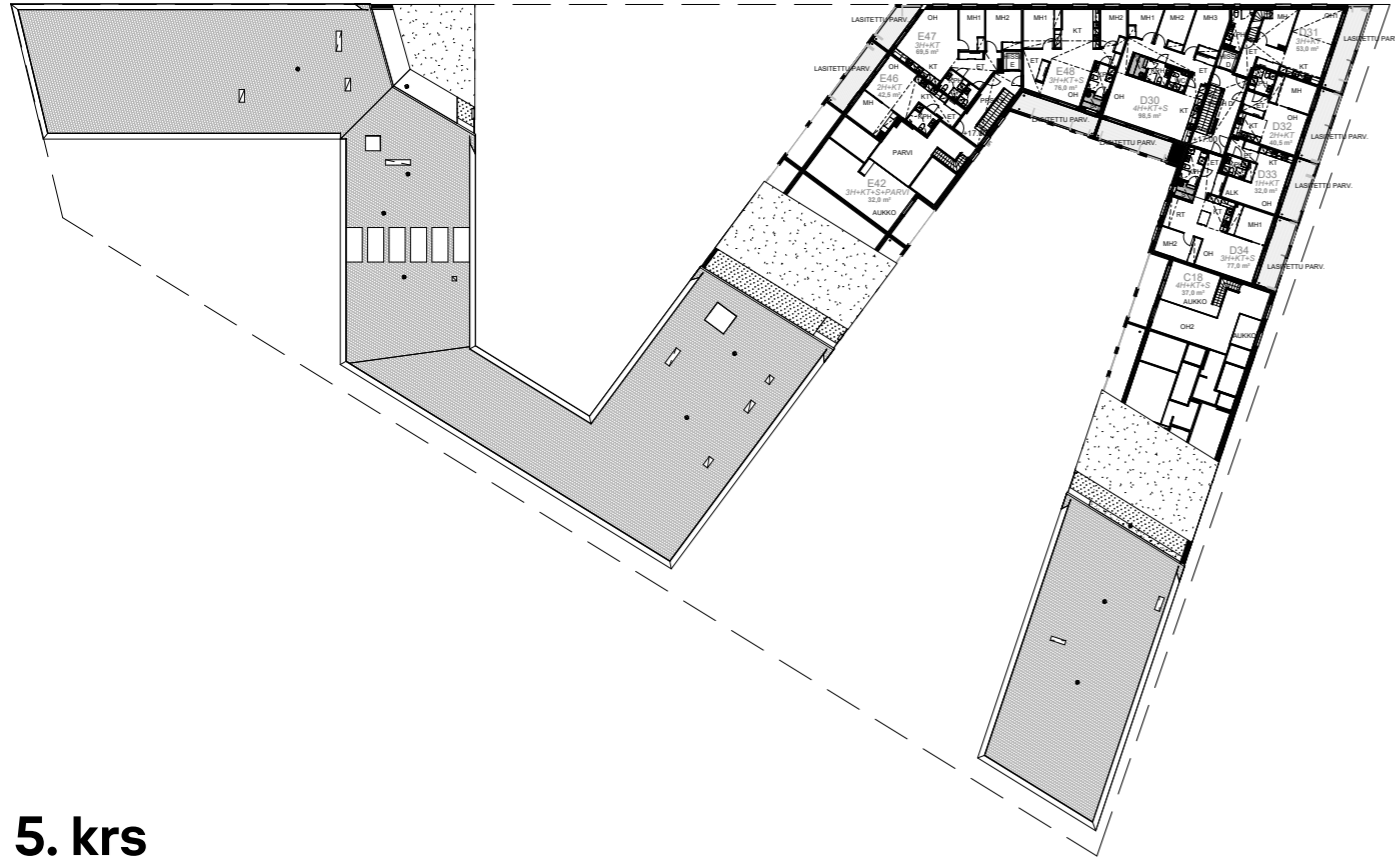
2. krs / 3. krs



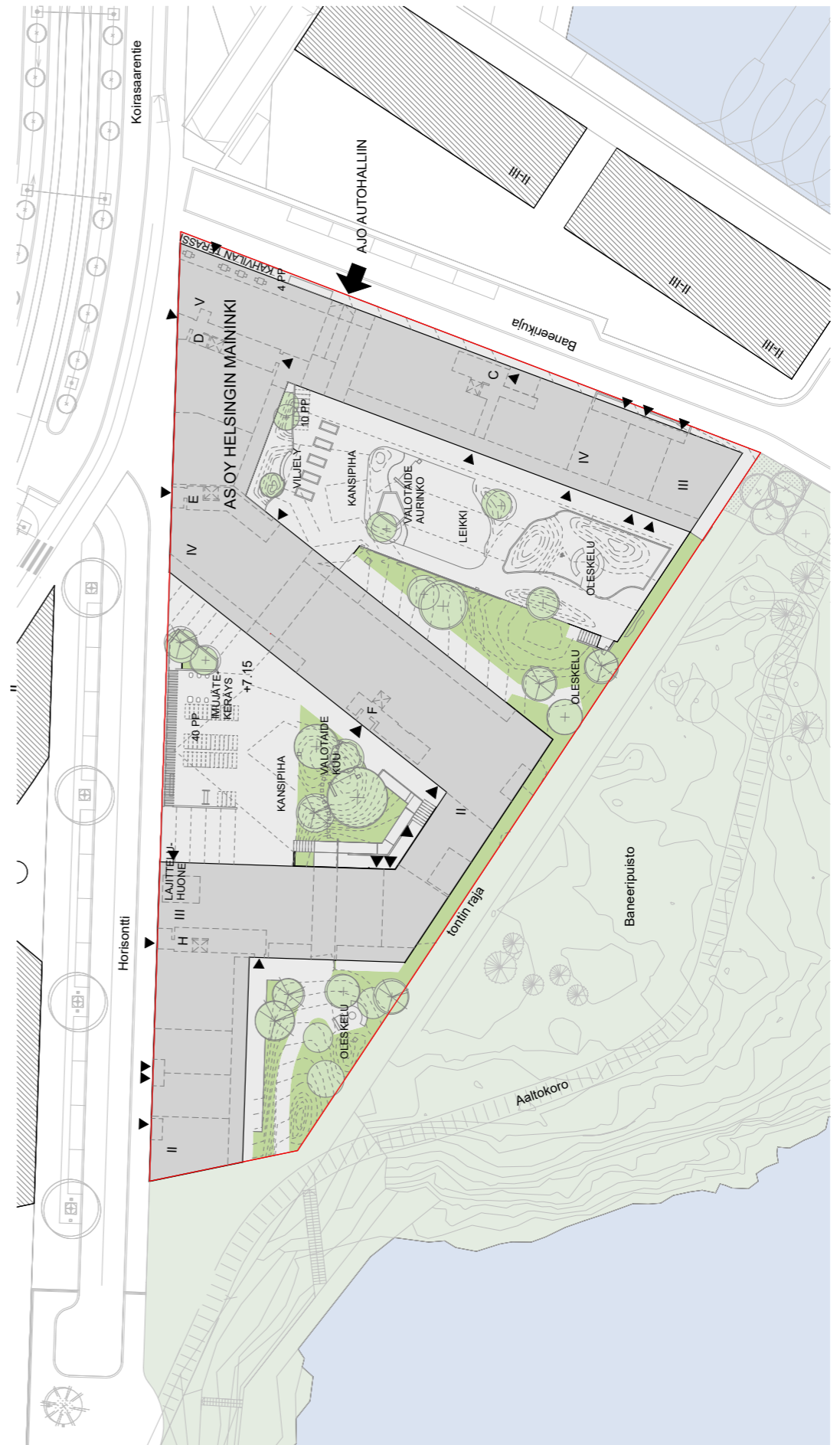
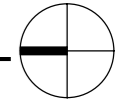
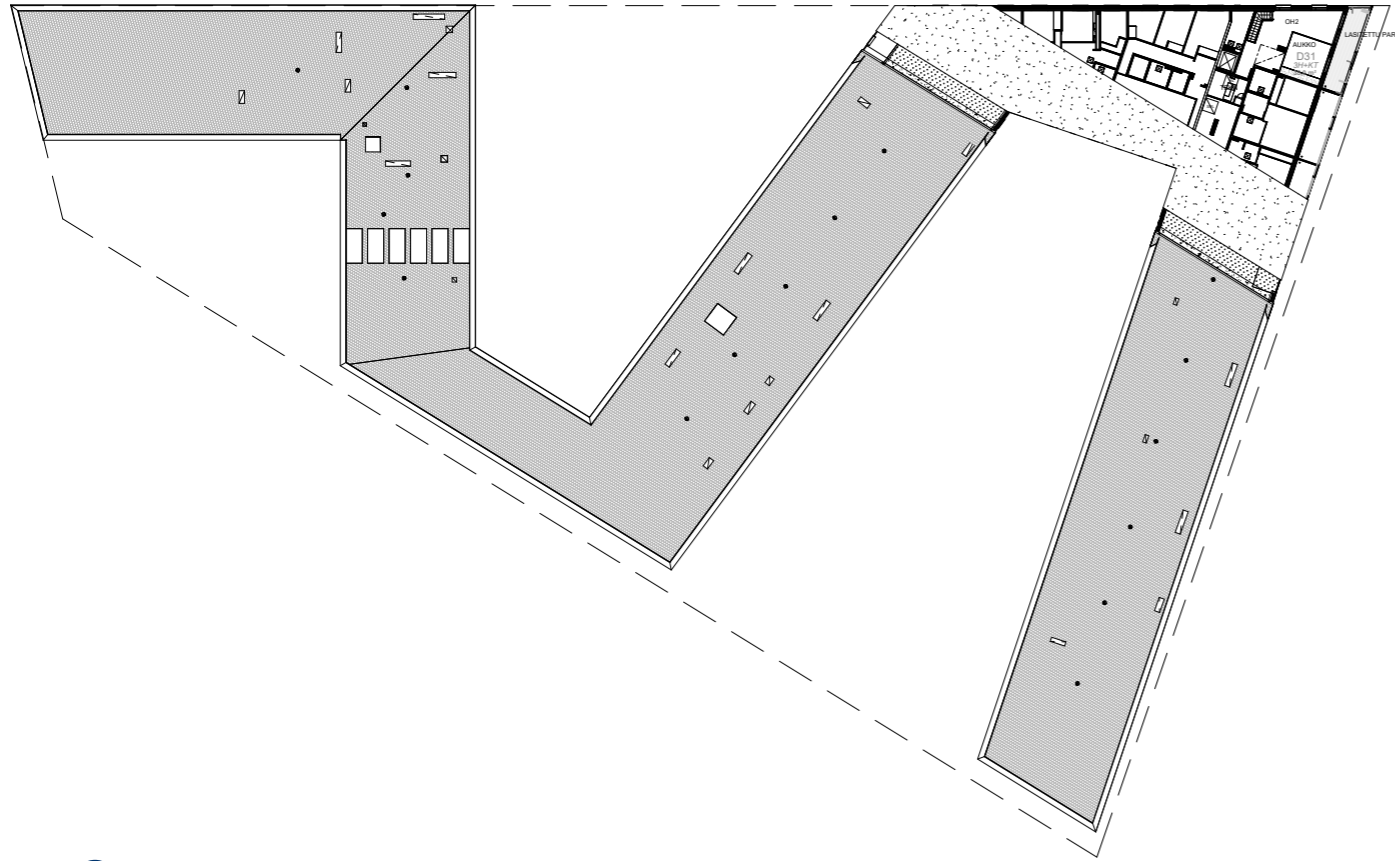
3. krs / 4. krs

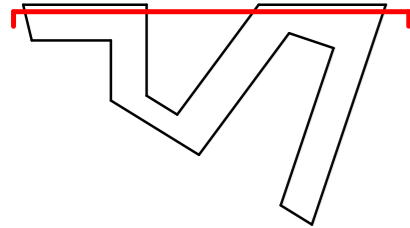
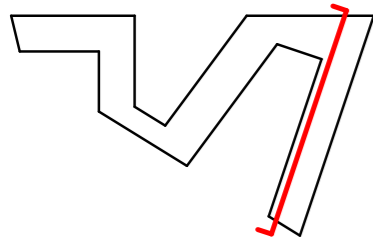


4. krs / 5. krs



5. krs





Rakentaja pidättää mahdollisuuden muuttaa tämän tiedotteen tietoja ja piirustuksia. Ostajan on tutustuttava myyntiasiakirjoihin ja vahvistettuihin suunnitelmiin kauppakirjan allekirjoittamisen yhteydessä. Tämä tiedote perustuu tilanteeseen 07/2024. Asuntojen markkinoinnissa annettavista tiedoista annetun asetuksen nro 130/2001 mukainen esite on nähtävissä esittelyssä. Rakennustapaselostuksen saat asunnon myyjältä tai rakentajalta.

# Kestää elämän.

**SKANSKA**

**Skanska Kodit**  
skanska.fi/kodit  
skanska.fi/otayhteysta  
Asuntomyynti p. 0800 162 162

**Skanska Talonrakennus Oy**  
Nauvontie 18, 00280 Helsinki



Painotuote  
4041 0955

Ympäristömerkitty painotuote, Grano Oy (ISO14001-ympäristösertifiointi), 1.7.2024, painosmäärä 50 kpl