

As. Oy Helsingin Maininki

# Huoneisto- ja kerrospohjat

[skanska.fi/maininki](https://skanska.fi/maininki)

**SKANSKA**

# Huoneistopohjien piirustusmerkintöjen selitykset

- ALK alkovi
- ET eteinen
- K keittiö
- KHH kodinhoitohuone
- KPH kylpyhuone
- KT keittotila
- KÄY käytävä
- MH makuuhuone
- MT makuutila
- OH olohuone
- S sauna
- VH vaatehuone
- TH työhuone
- PARV. parveke

 liesitaso, uuni ja liesikupu


 tiskiallas ja hana

 astianpesukone tason alla

 mikroaaltouuni

 jääkaappi, pakastin

 jääkaappipakastinyhdistelmä

 uuni ja mikroaaltouuni päällekkäin samassa kalusteessa

 ryhmäkeskus

 jaettu siivous-/pyykkikaappi


 siivouskaappi


 pyykkikaappi

 hyllykaappi

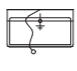
 tankokaappi

 ylakaappi alkovissa


 lattiaan asennettu jakotukki

 SJ liukuovellinen säilytysjärjestelmä


 wc-istuin

 lavuaari, allaskaappi, tasopeili, hana ja käsisuihku

 suihku

 kääntyvä suihkuseinä

 sähkökiuas

 tilavaraus pesukoneelle ja kuivausrummulle, päällä huoneistokohtainen ilmanvaihtokone

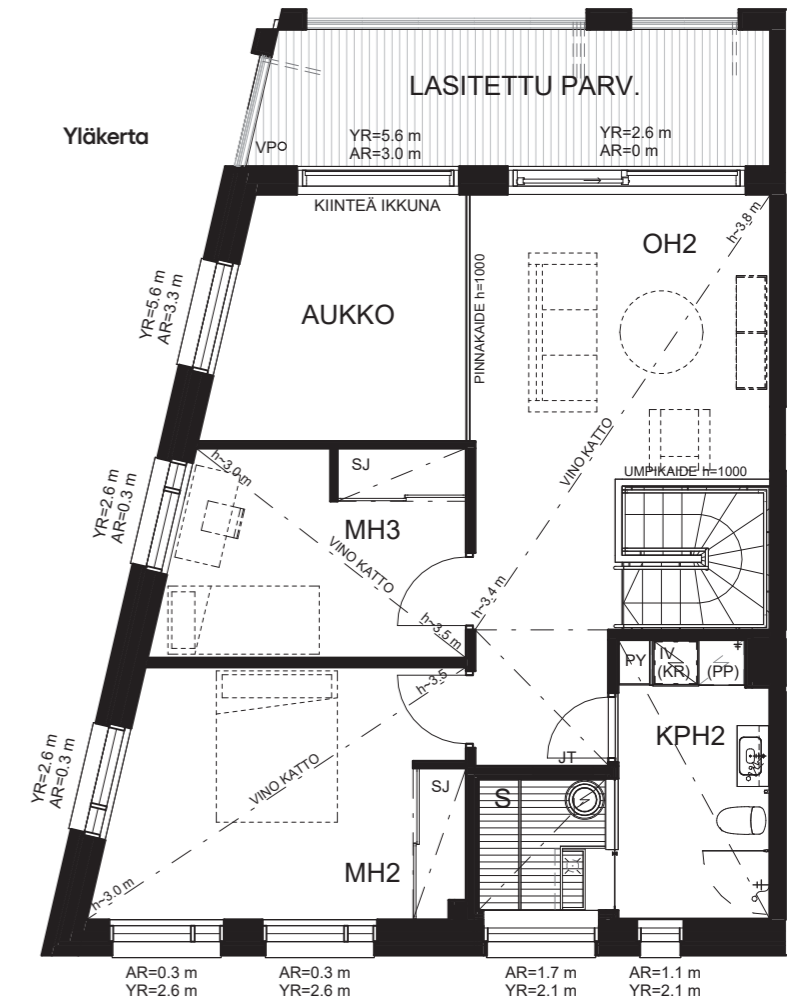
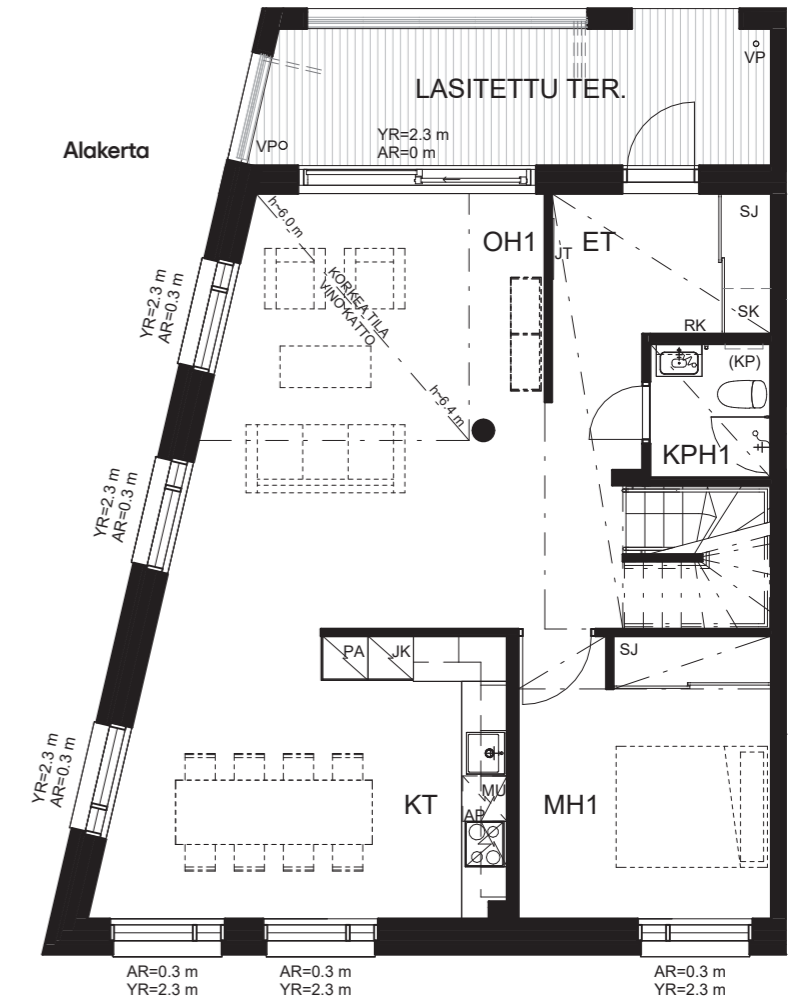
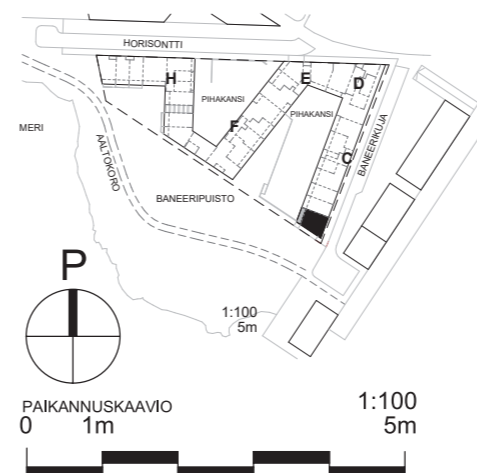
 tilavaraus kuivausrummulle tason alla

 viilennysyksikkö

# Huoneistopohjat 1:100

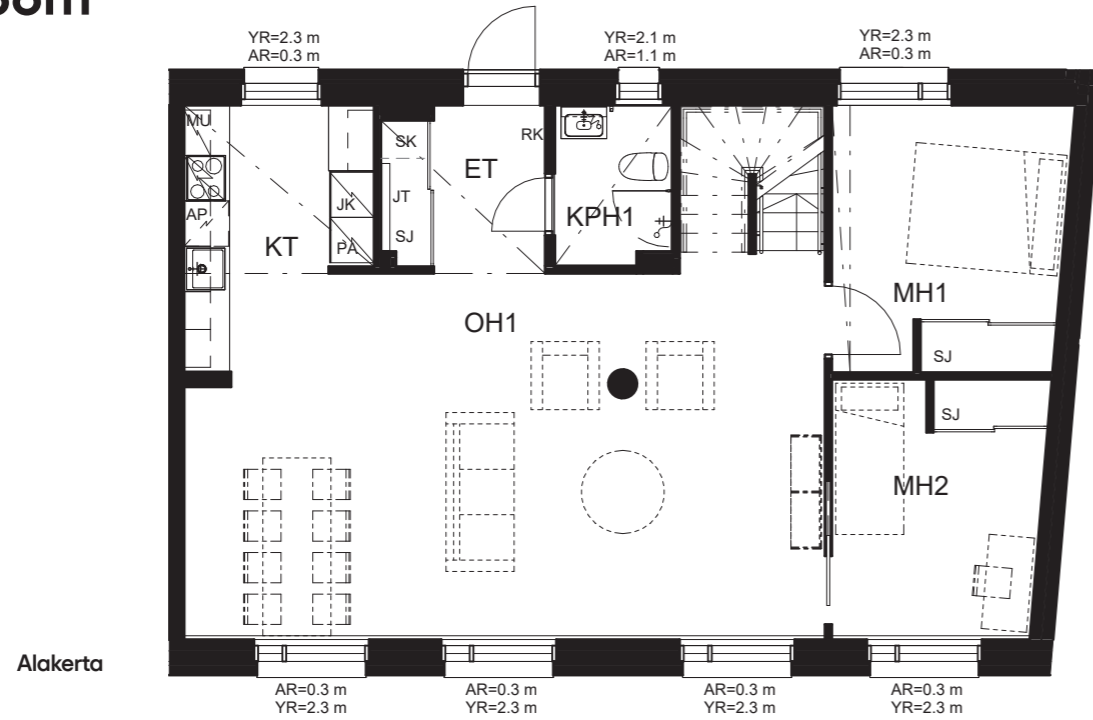
## 5H+KT+S 137,5 m<sup>2</sup>

B4 2. krs 72,0 m<sup>2</sup>  
3. krs 65,5 m<sup>2</sup>

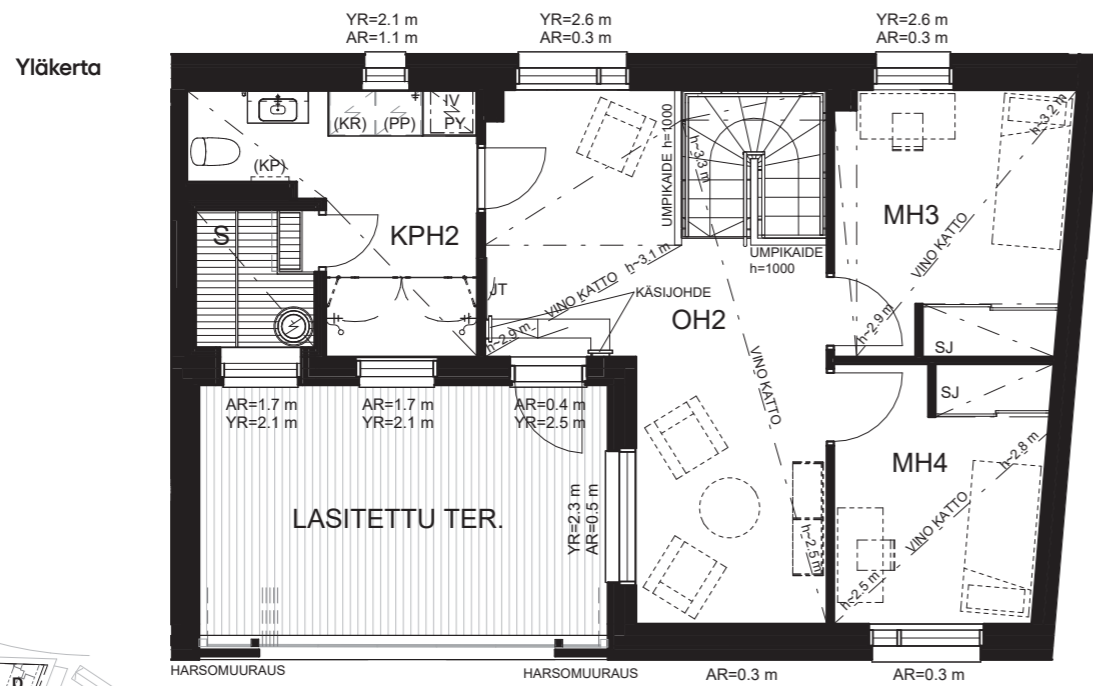


**6H+KT+S 136m<sup>2</sup>**

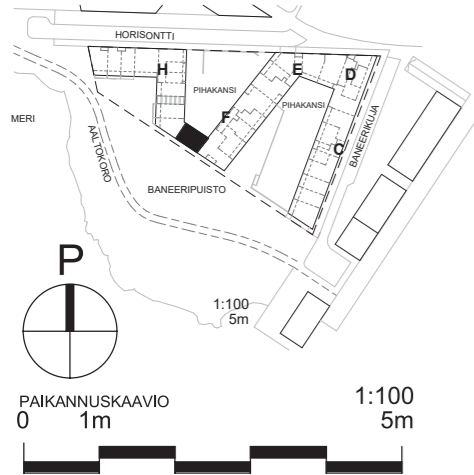
G61 1. krs 76,5 m<sup>2</sup>  
2. krs 59,5 m<sup>2</sup>



Alakerta



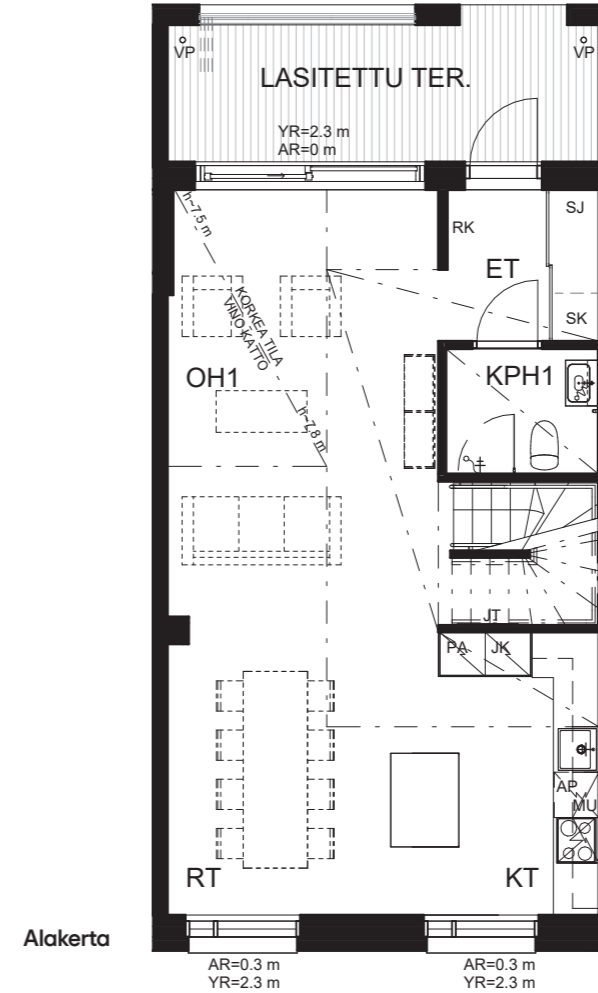
Yläkerta



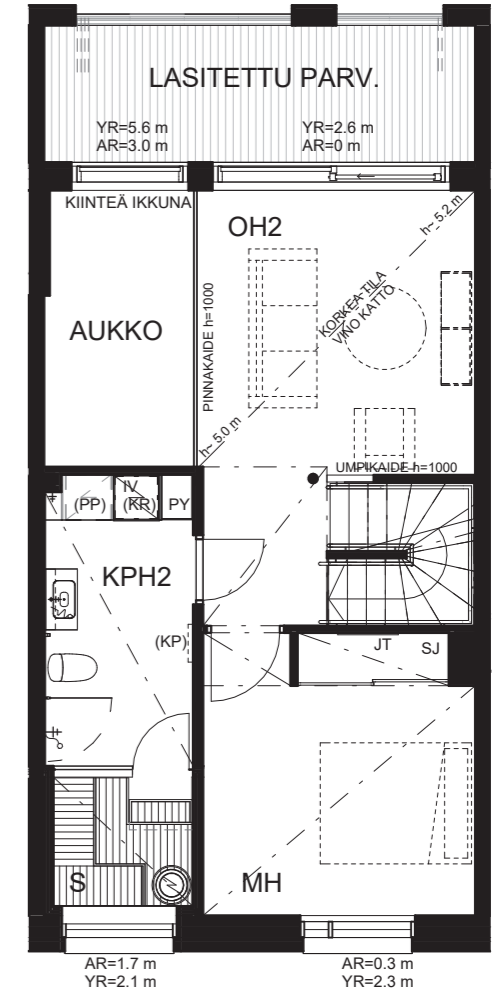
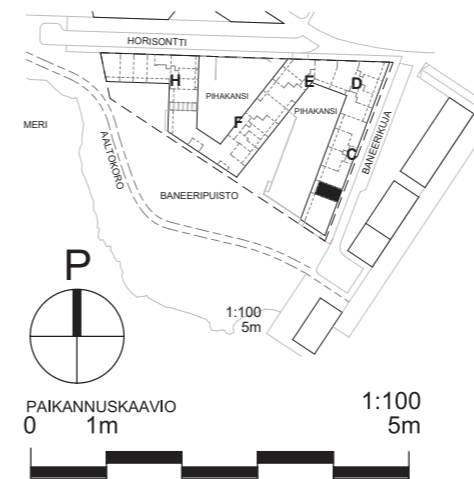
**3H+KT+S+PARVI 130,5 m<sup>2</sup>**

B6 2. krs 50,5 m<sup>2</sup>  
3. krs 47,0 m<sup>2</sup>  
4. krs 33,0 m<sup>2</sup>

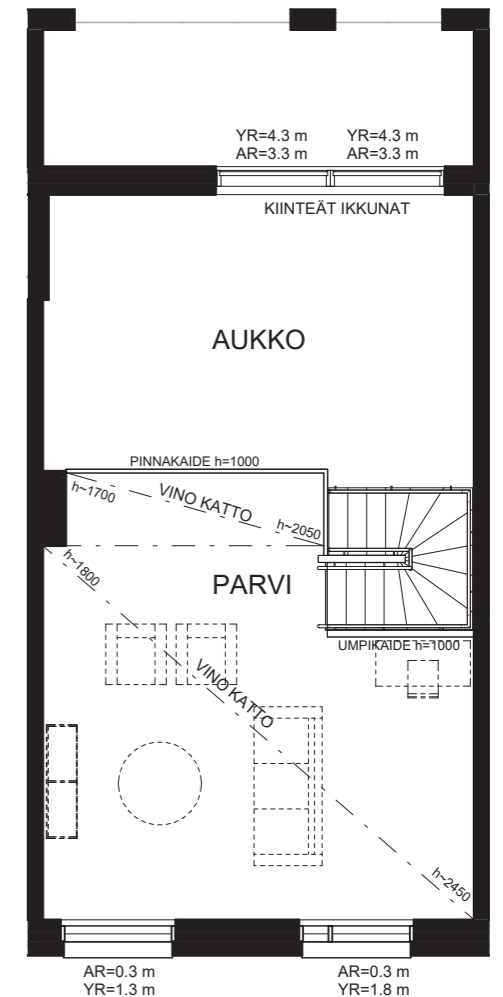
Yläkerta



Alakerta



Yläkerta



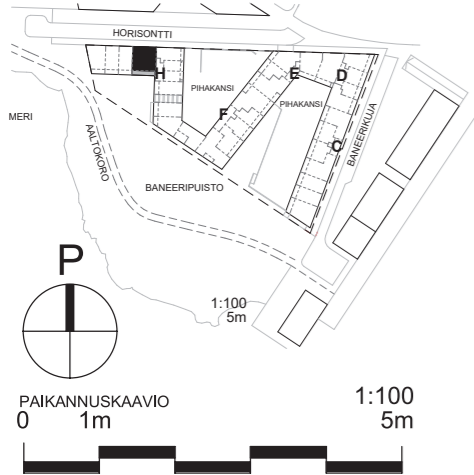
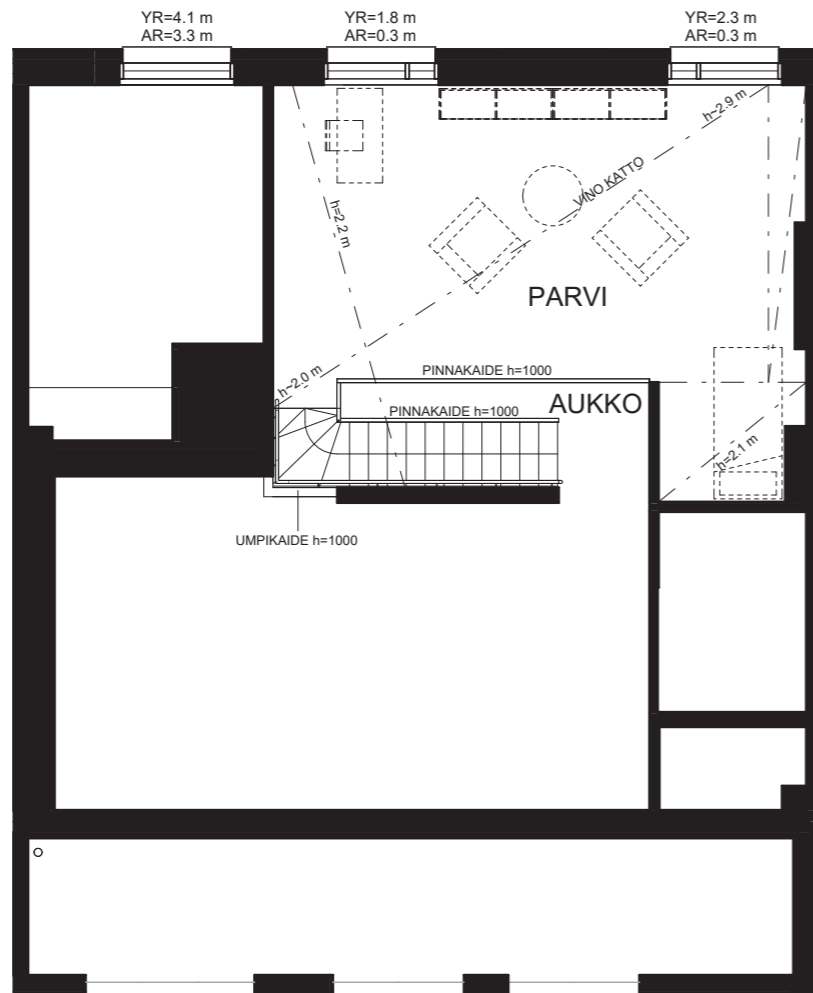
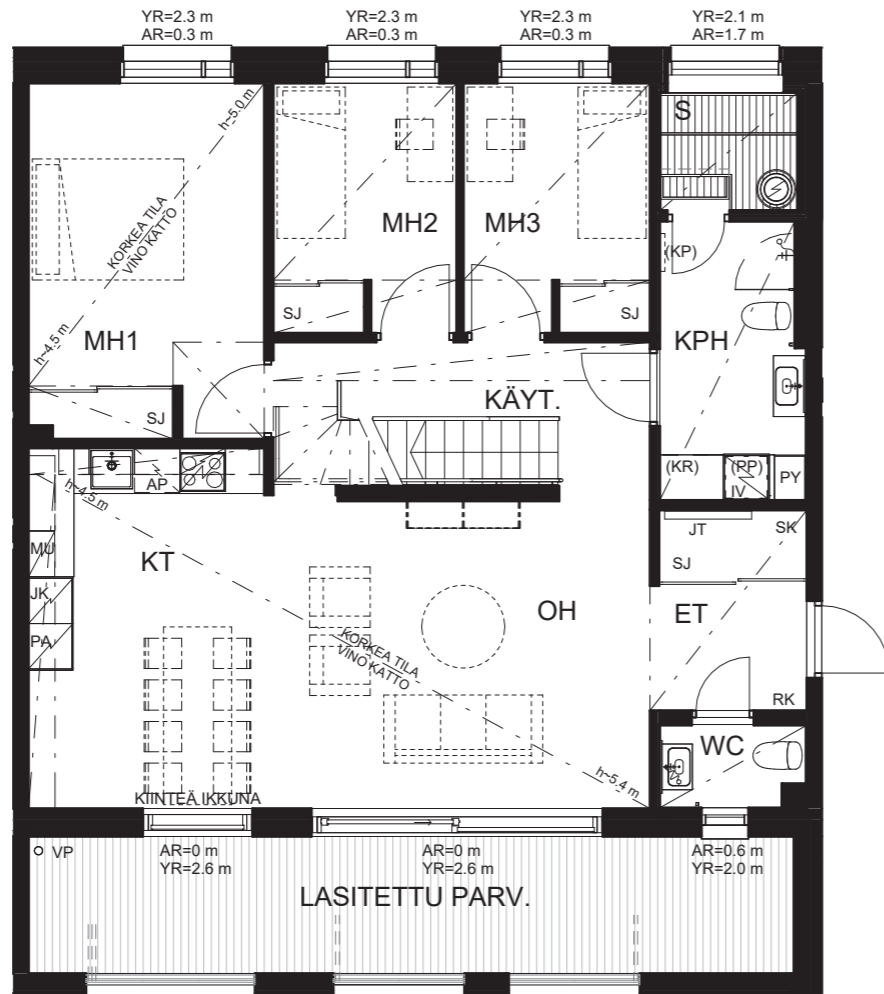
Parvi

**4H+KT+S+PARVI**  
**129 m<sup>2</sup>**

H68 2. krs 94,0 m<sup>2</sup>  
3. krs 35,0 m<sup>2</sup>

Alakerta

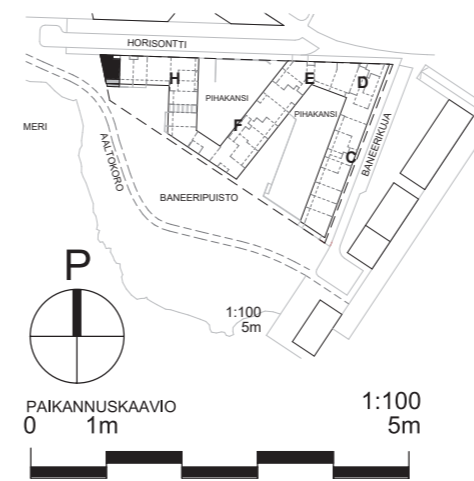
Yläkerta



**4H+KT+S 123,5 m<sup>2</sup>**

178 1. krs 57,5 m<sup>2</sup>  
2. krs 66,0 m<sup>2</sup>

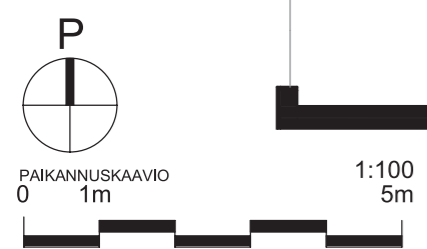
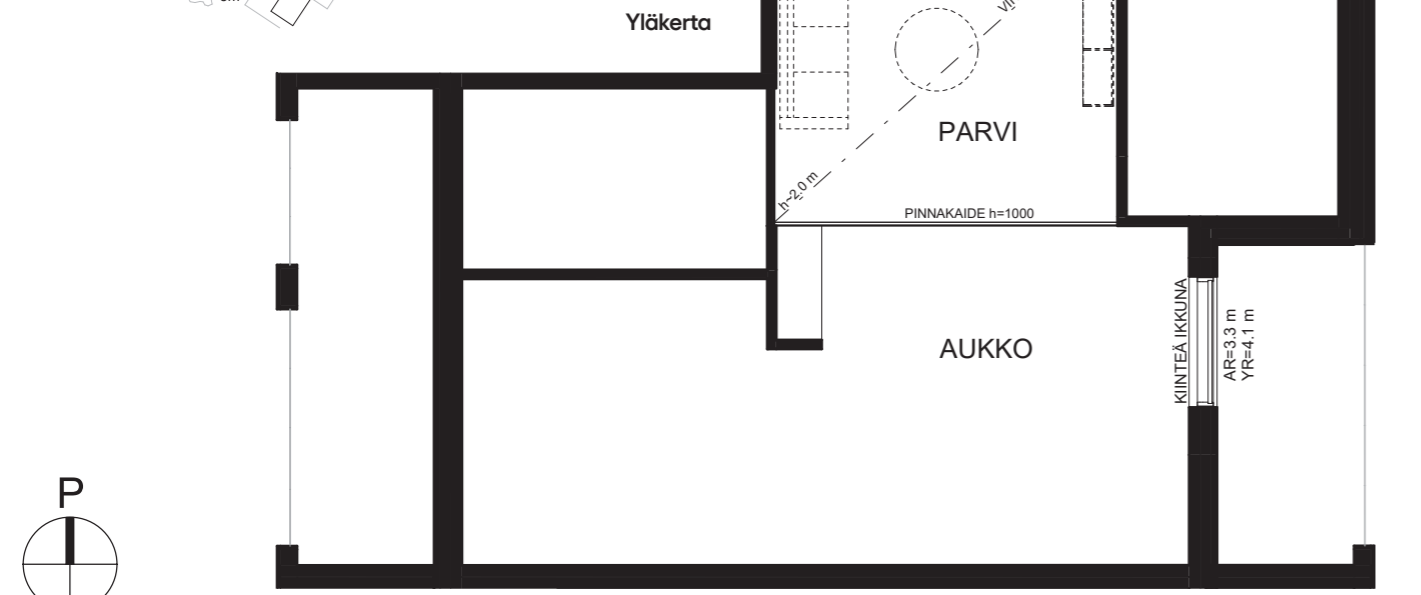
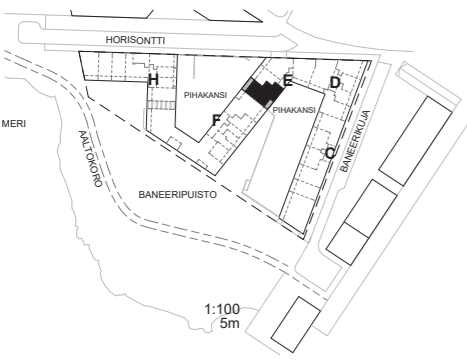
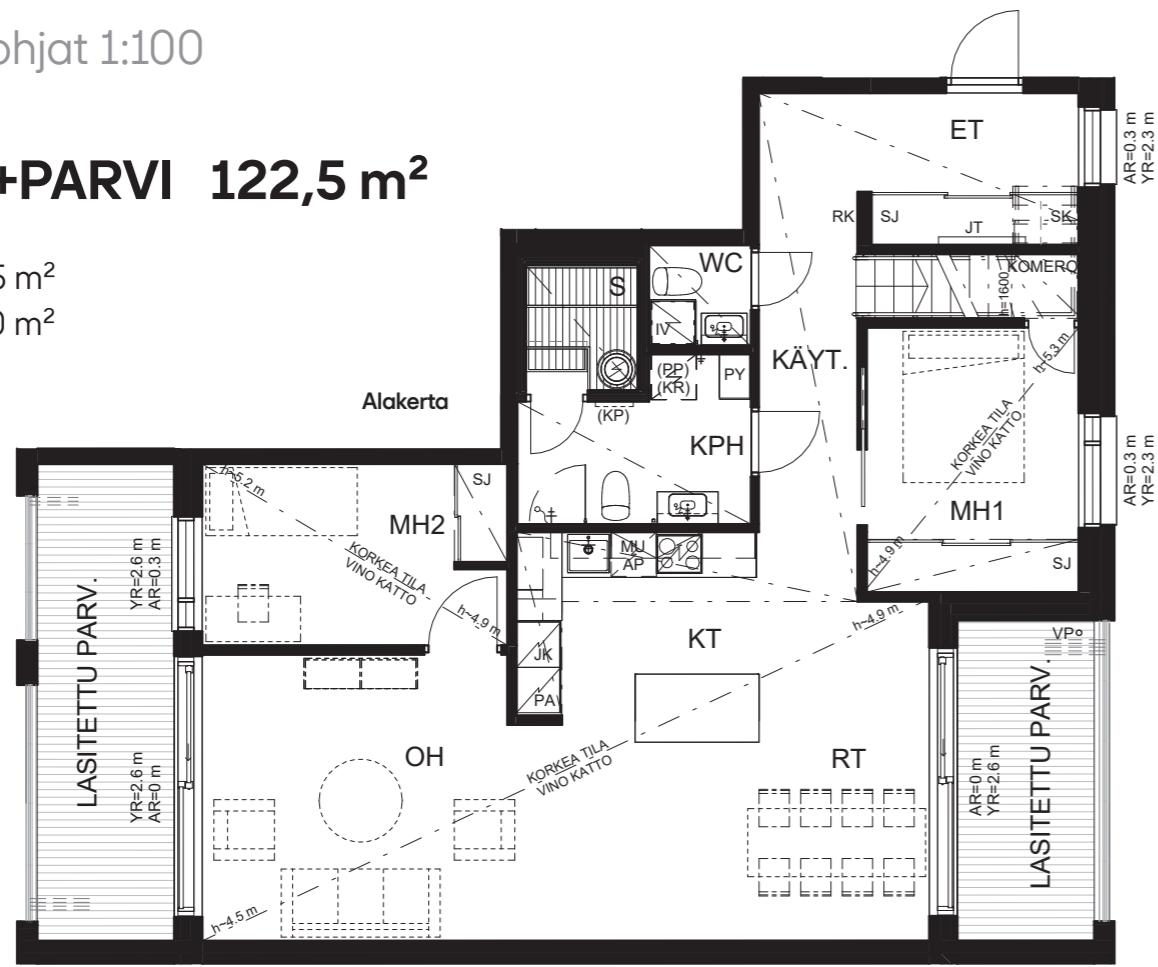
Alakerta



PAIKANNUSKAAVIO 1:100  
0 1m 5m

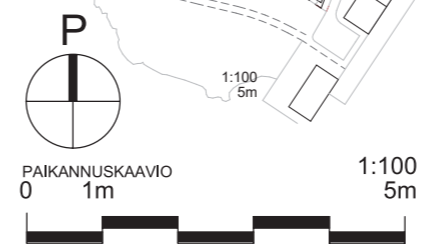
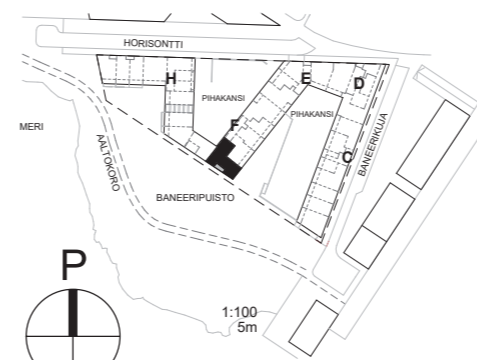
# 3H+KT+S+PARVI 122,5 m<sup>2</sup>

E42 3. krs 90,5 m<sup>2</sup>  
4. krs 32,0 m<sup>2</sup>



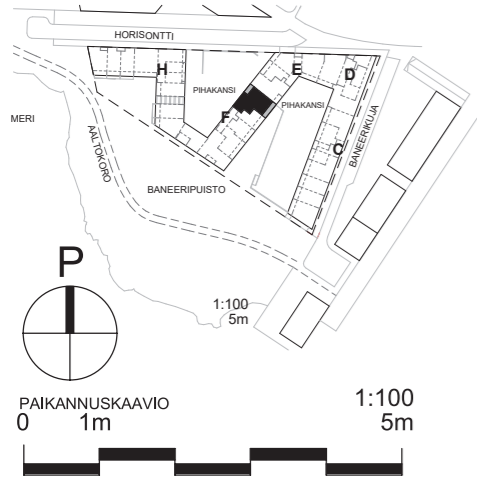
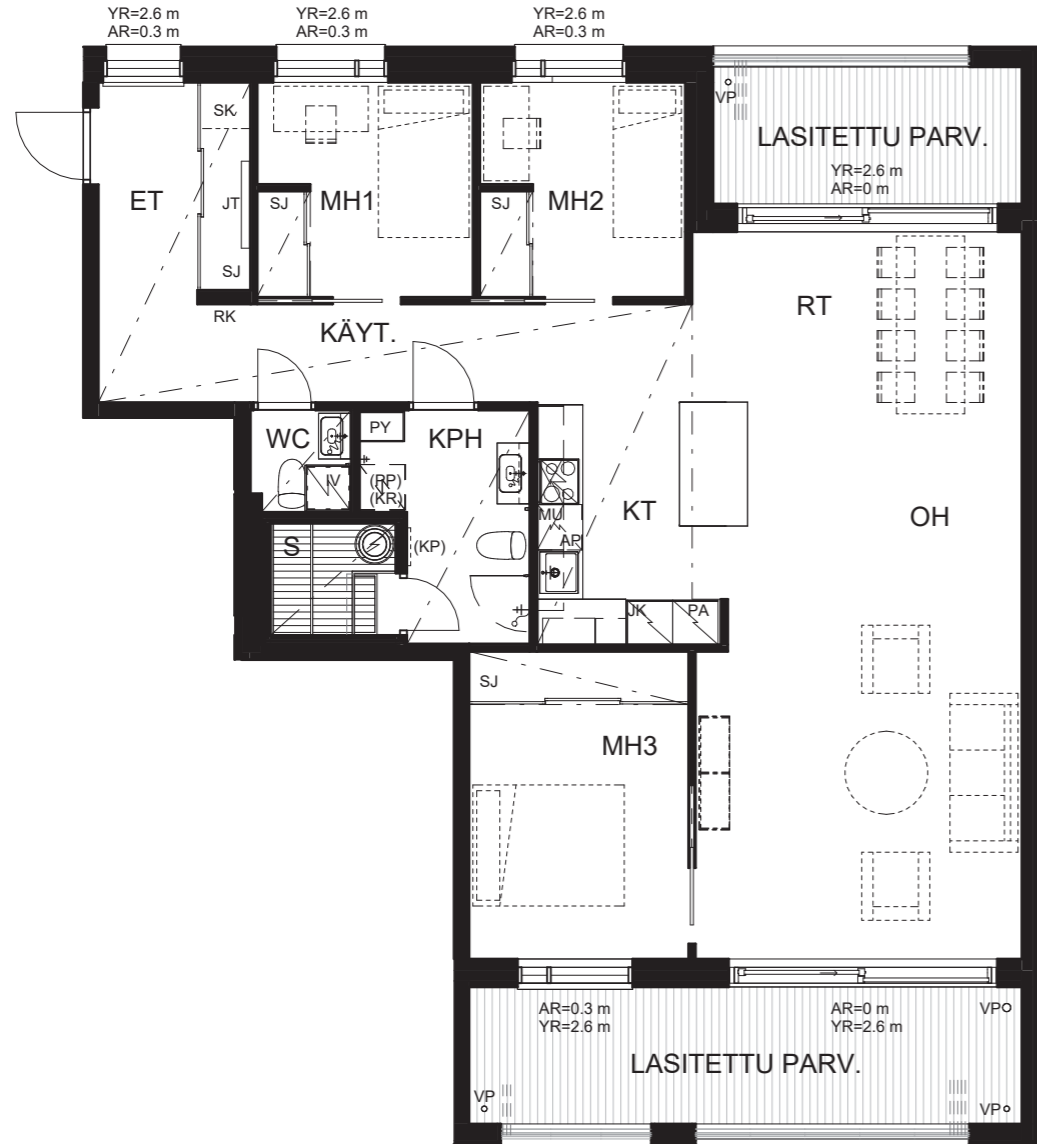
# 4H+KT+S 107 m<sup>2</sup>

G53 1. krs



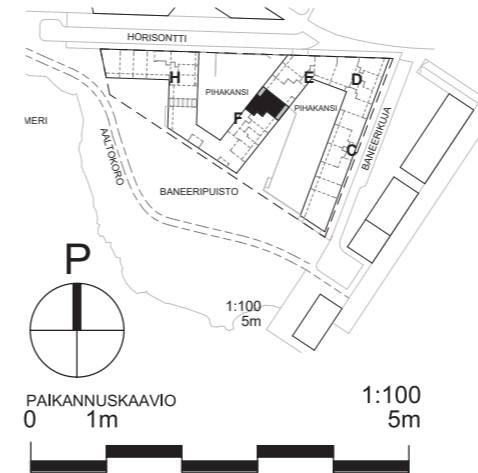
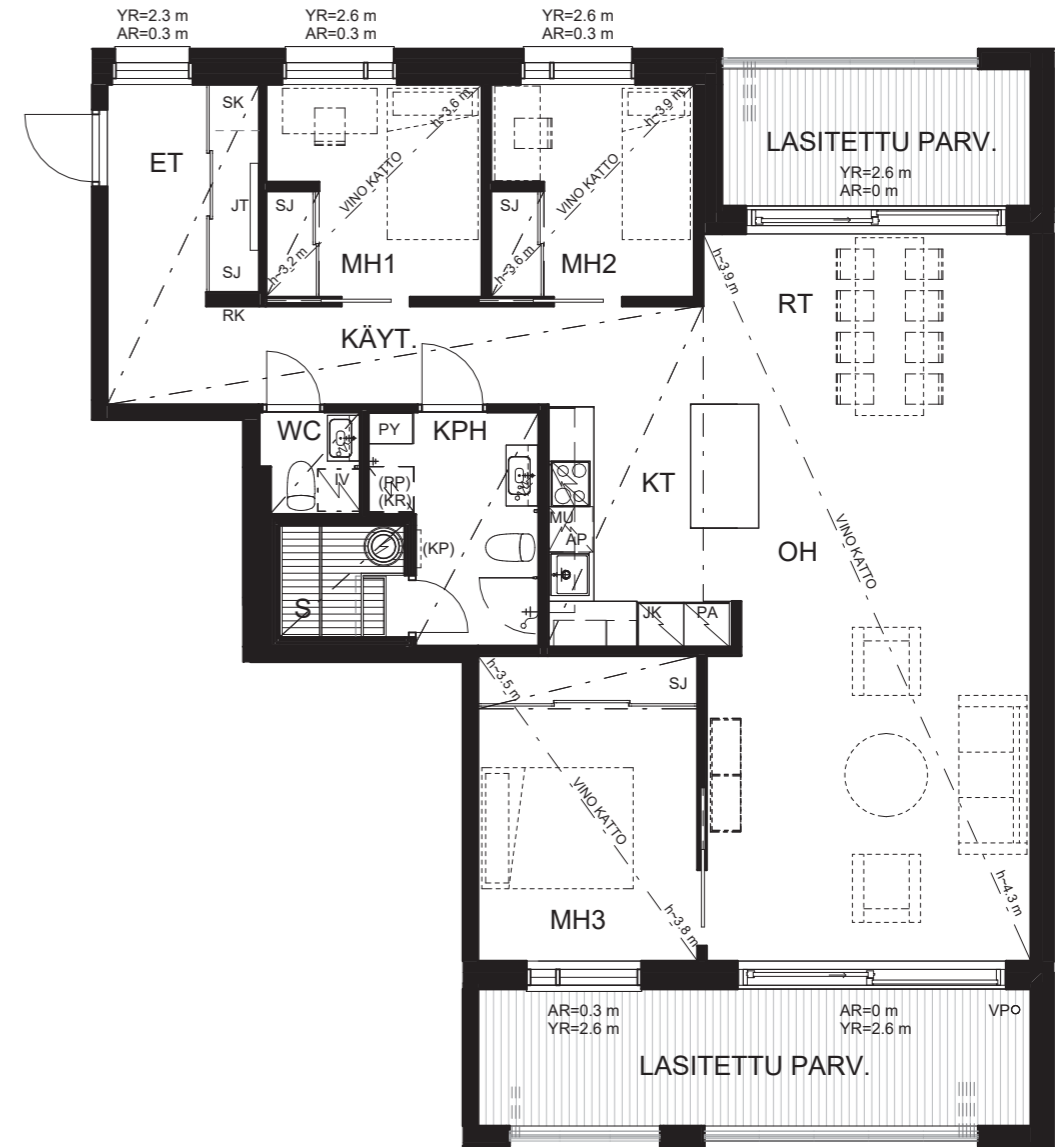
# 4H+KT+S 105,5 m<sup>2</sup>

F49 1. krs



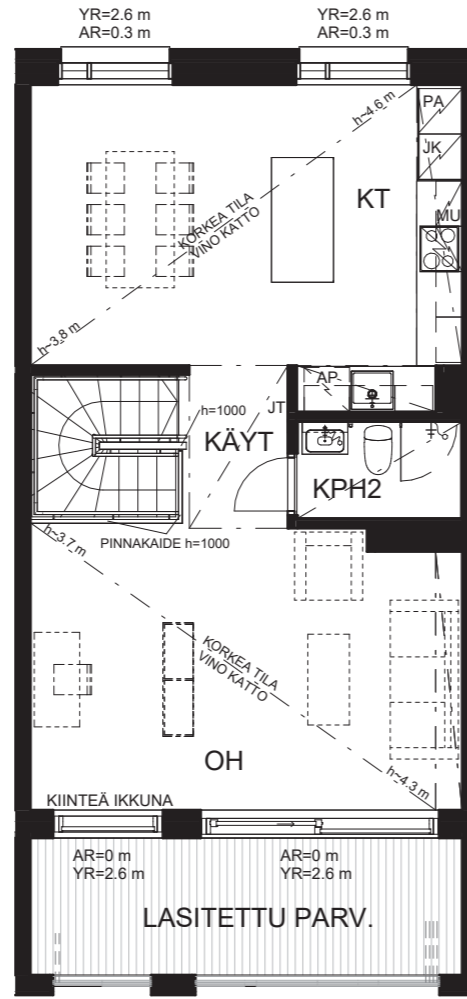
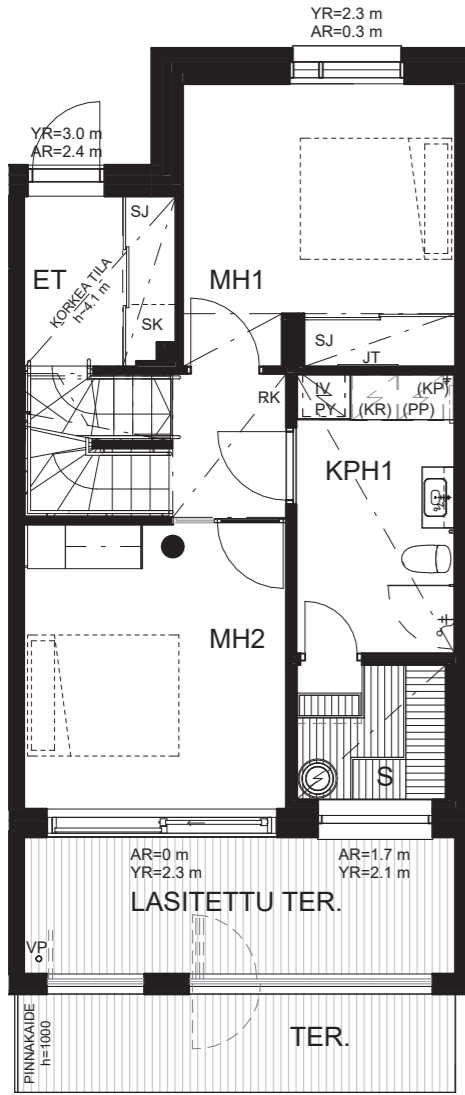
# 4H+KT+S 105,5 m<sup>2</sup>

F59 3. krs



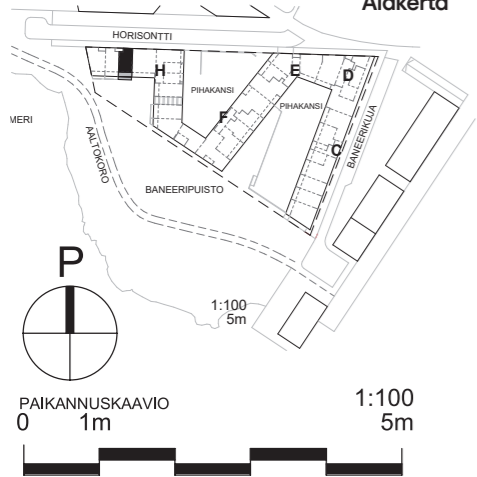
### 3H+KT+S 101,5 m<sup>2</sup>

I76 1. krs 47,5 m<sup>2</sup>  
2. krs 54,0 m<sup>2</sup>



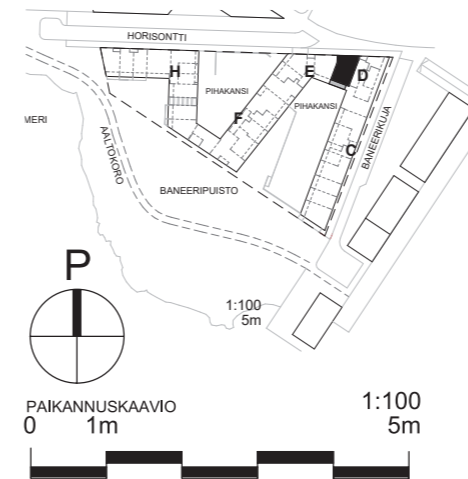
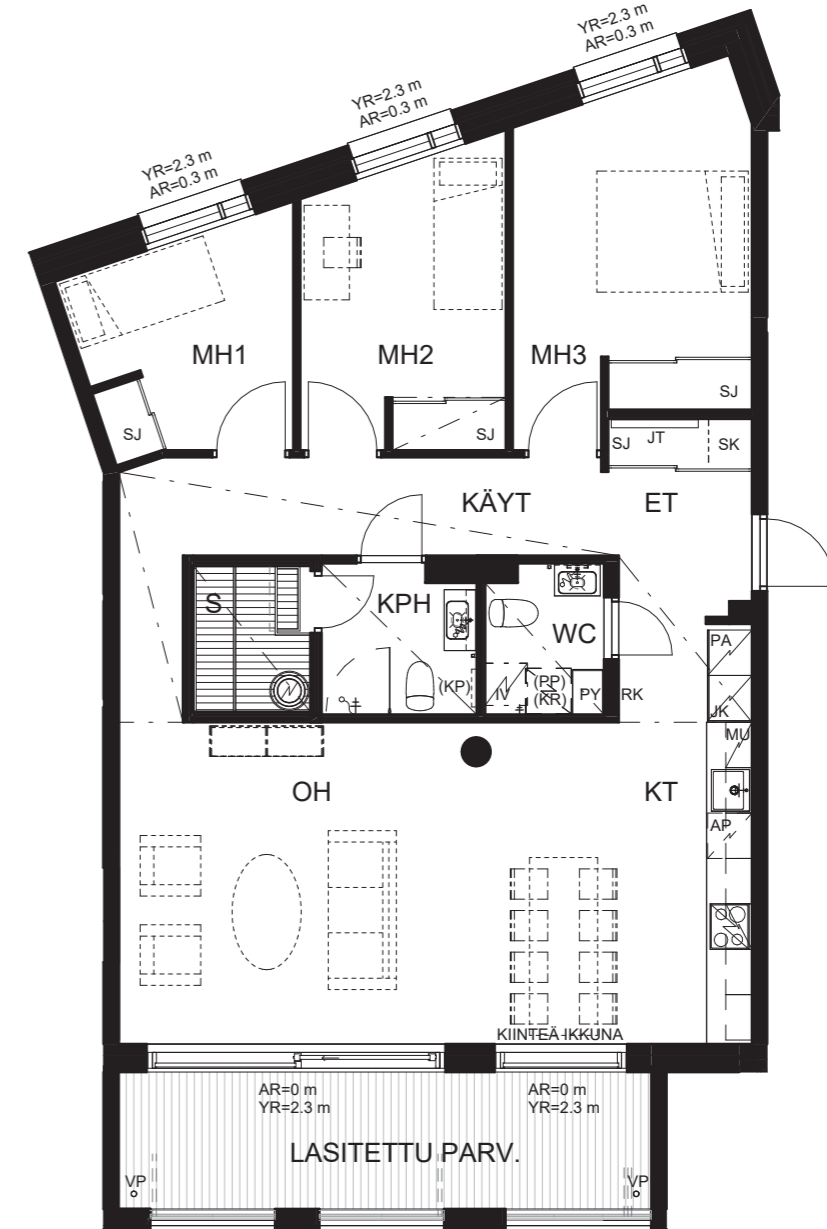
Alakerta

Yläkerta



### 4H+KT+S 99 m<sup>2</sup>

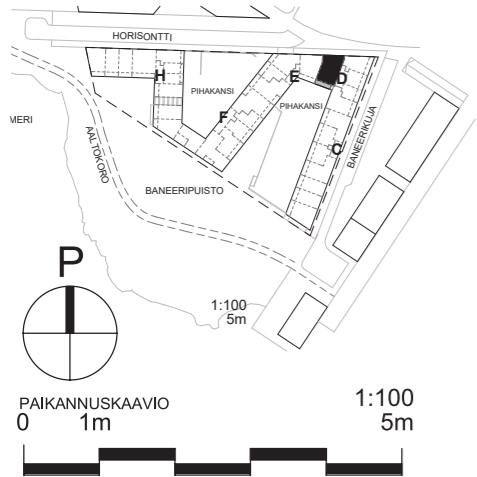
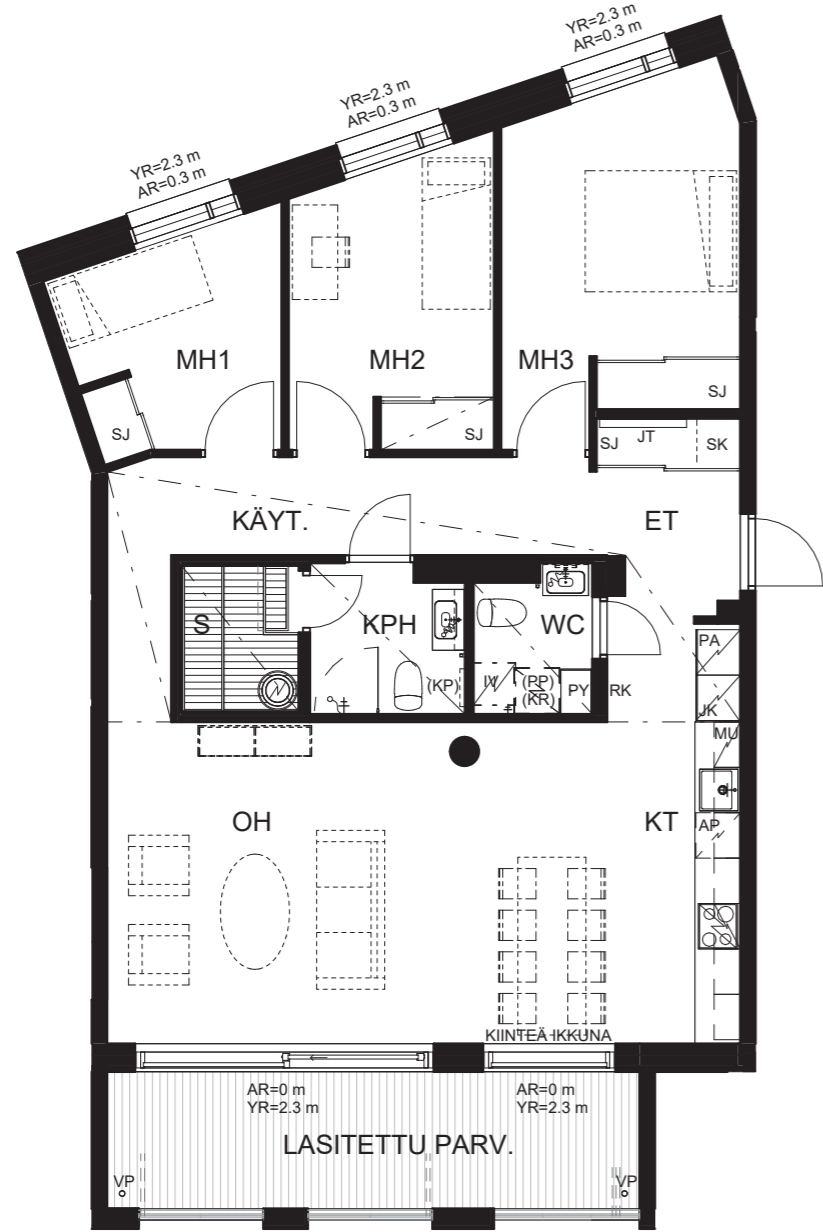
D19 1. krs



**4H+KT+S 98,5 m<sup>2</sup>**

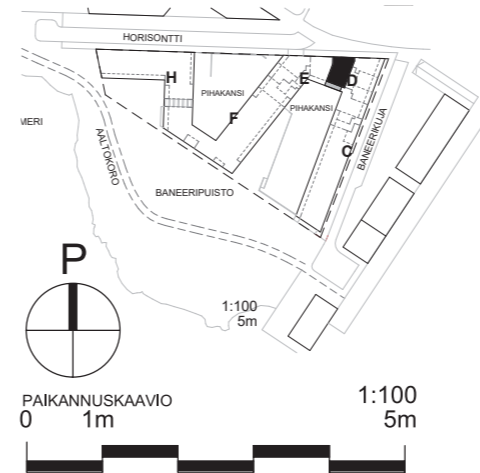
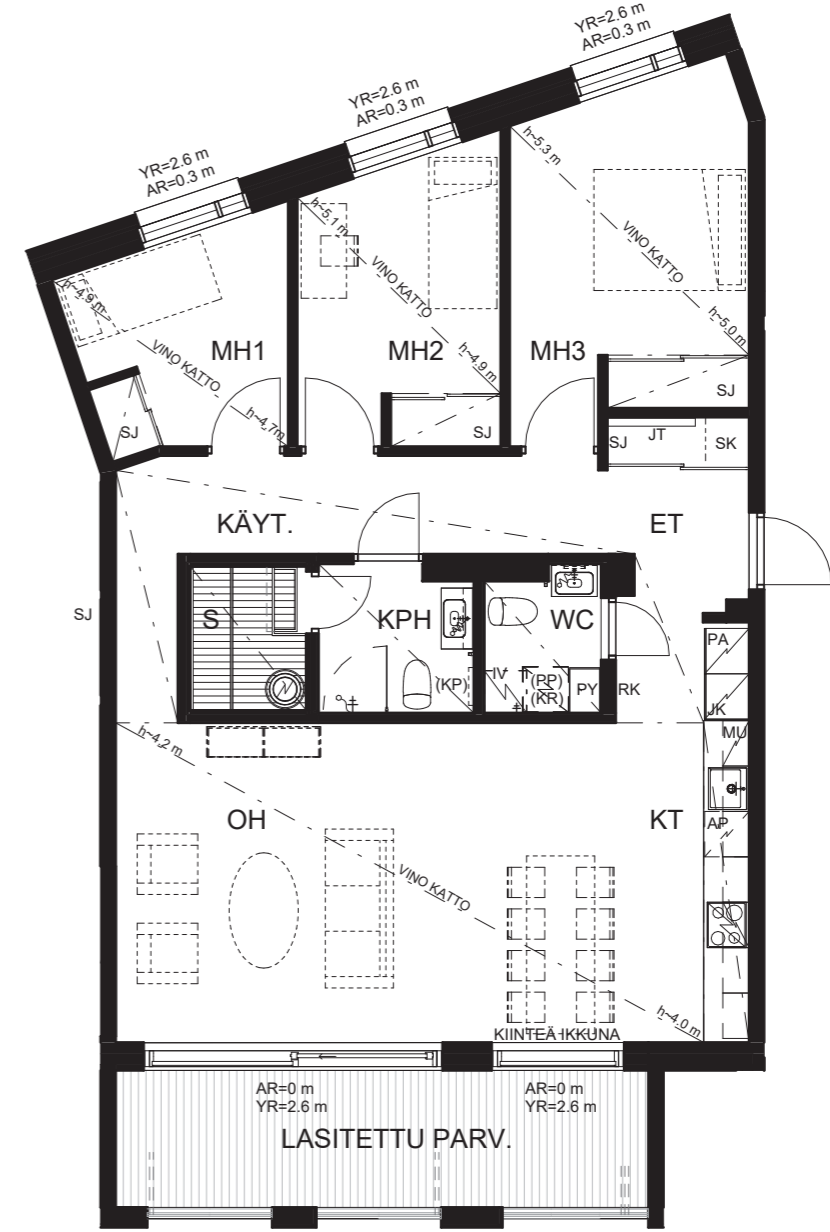
D20 2. krs

D25 3. krs



**4H+KT+S 98,5 m<sup>2</sup>**

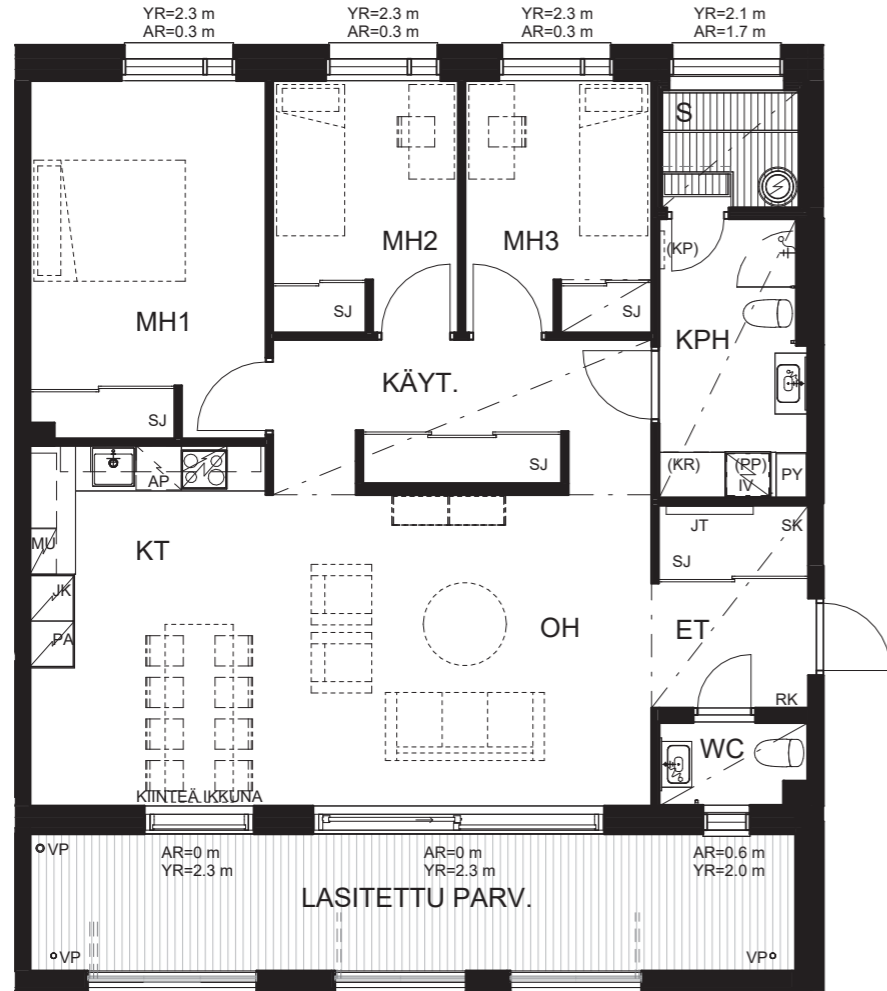
D30 4. krs





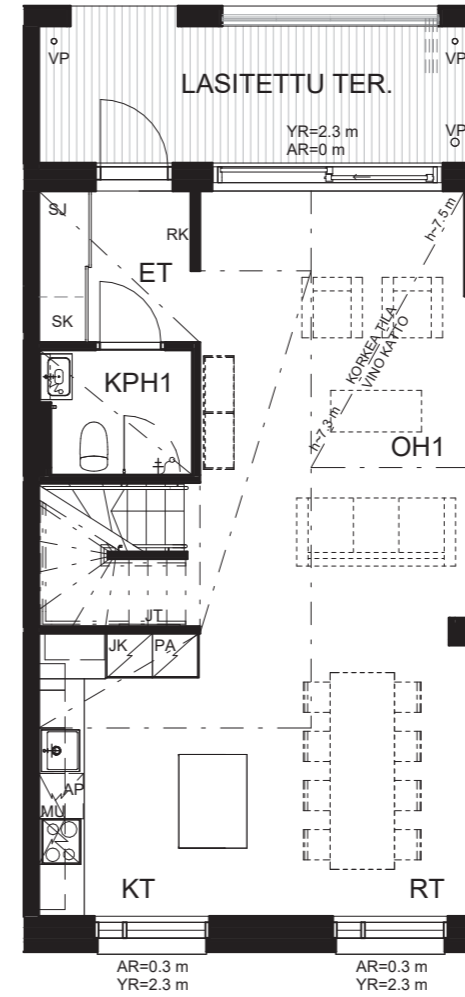
**4H+KT+S 97,5 m<sup>2</sup>**

H64 1. krs

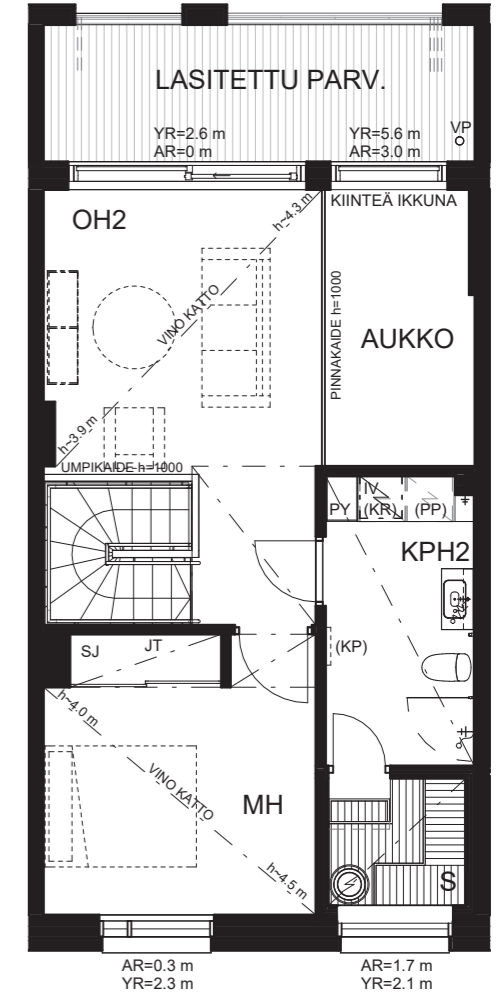


**3H+KT+S 97,5 m<sup>2</sup>**

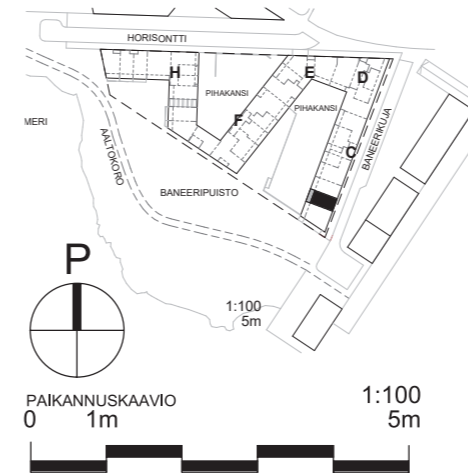
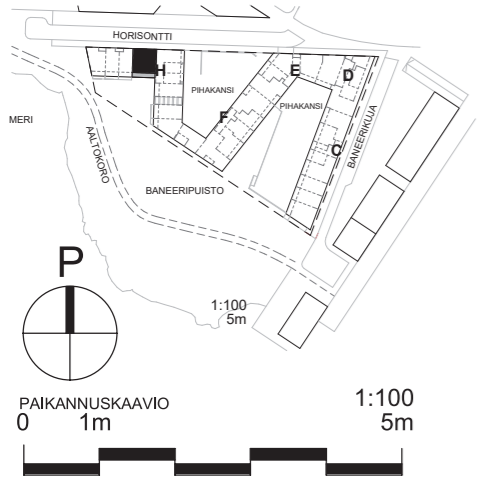
B5 2. krs 50,5 m<sup>2</sup>  
3. krs 47,0 m<sup>2</sup>



Alakerta

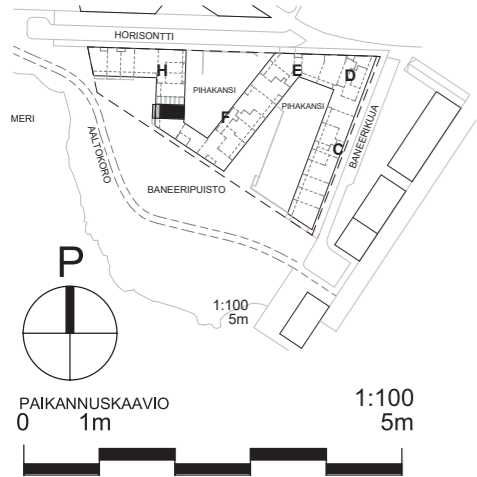


Yläkerta



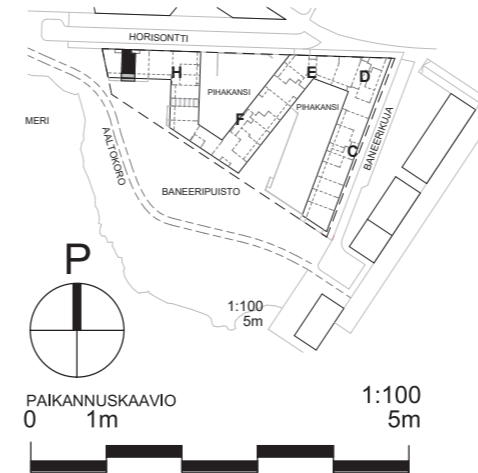
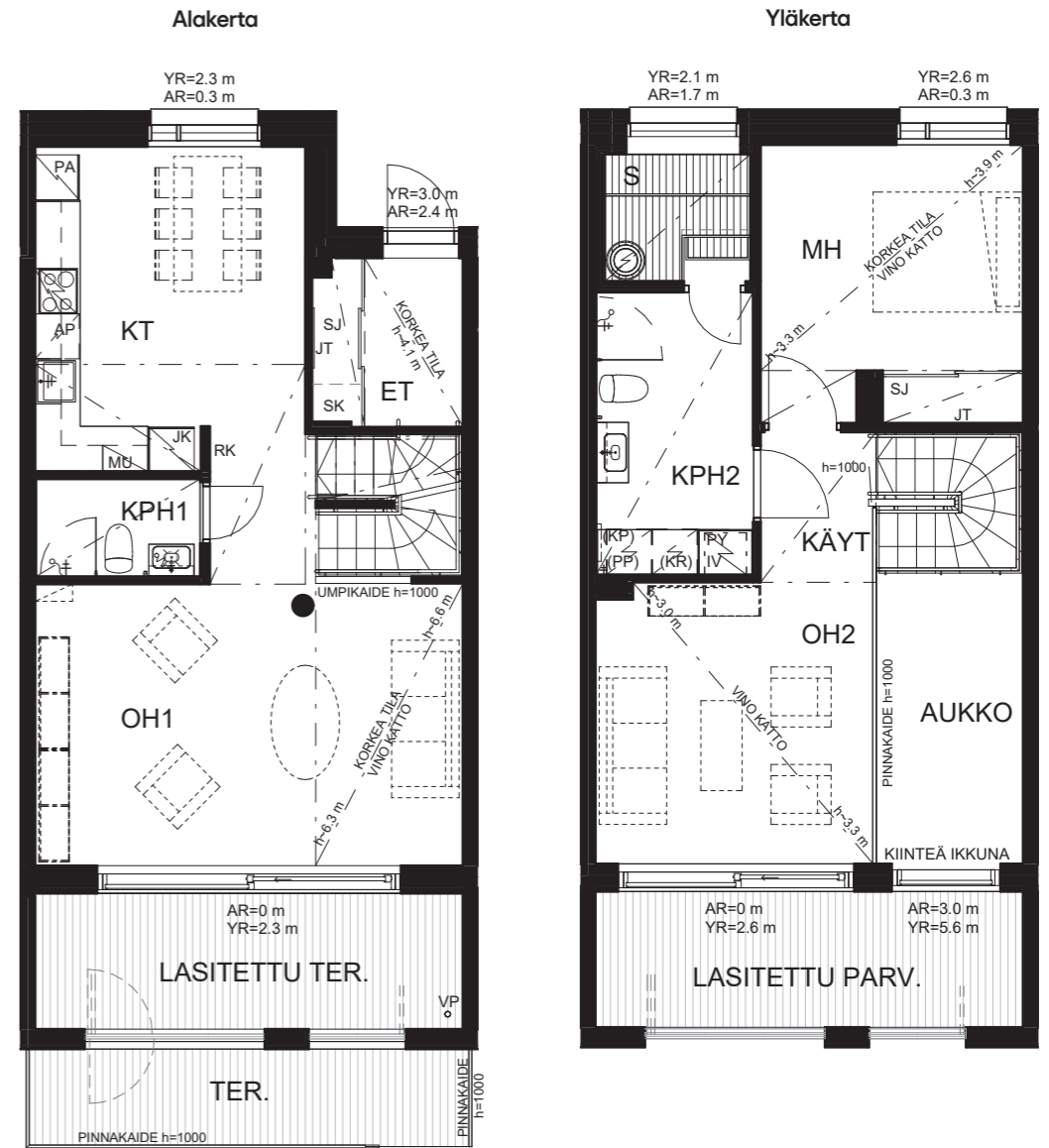
# 3H+KT+S 97,5 m<sup>2</sup>

G63 1. krs 50,5 m<sup>2</sup>  
2. krs 47,0 m<sup>2</sup>



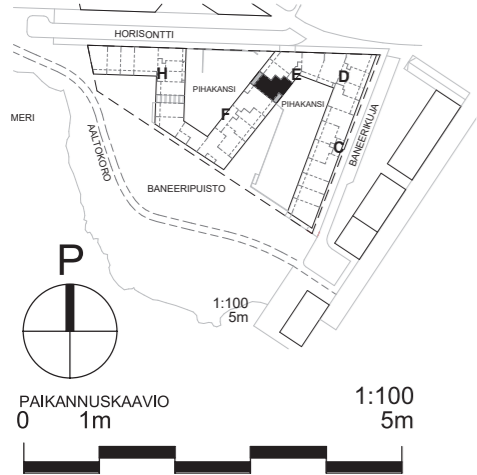
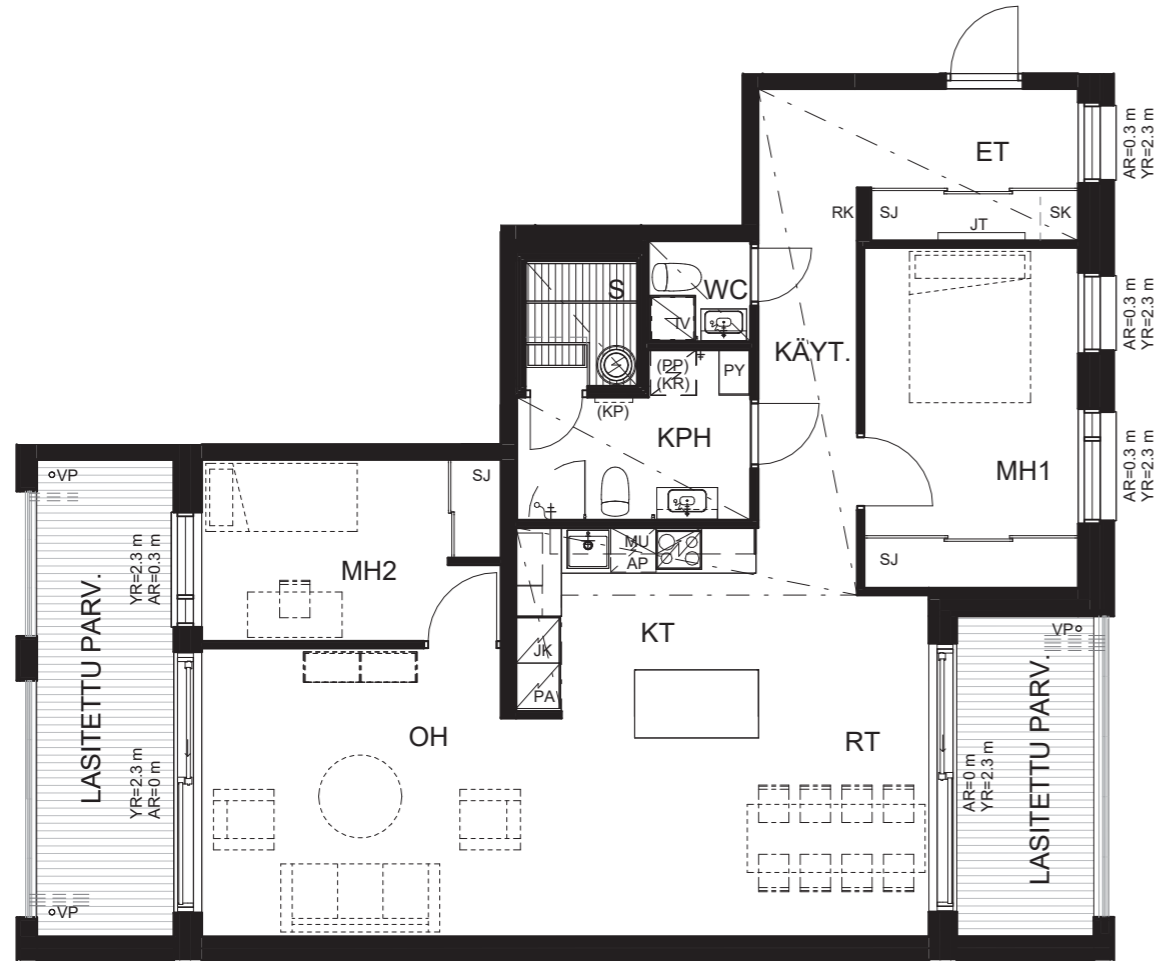
# 3H+KT+S 94 m<sup>2</sup>

I77 1. krs 47,5 m<sup>2</sup>  
2. krs 46,5 m<sup>2</sup>



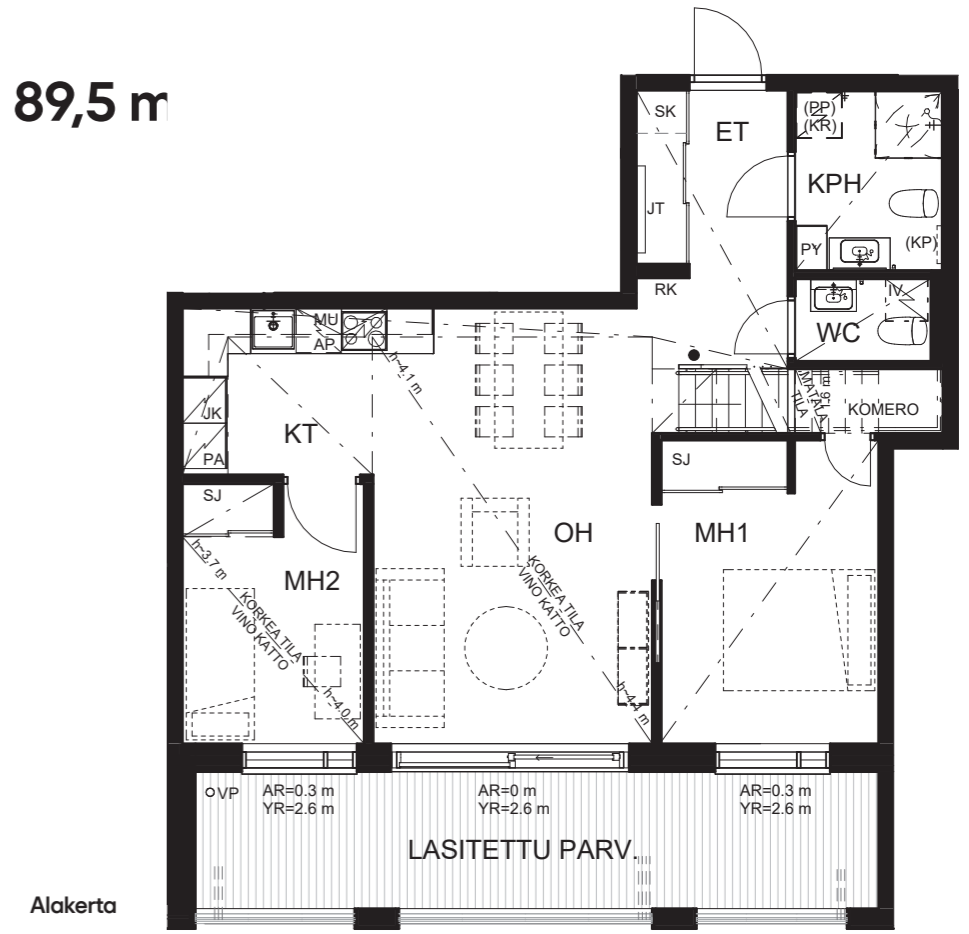
**3H+KT+S 93,5 m<sup>2</sup>**

E38 2. krs



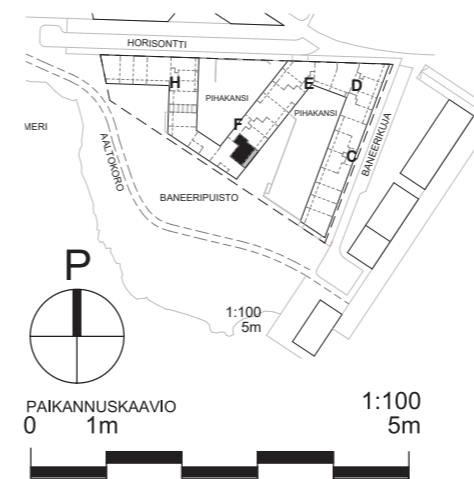
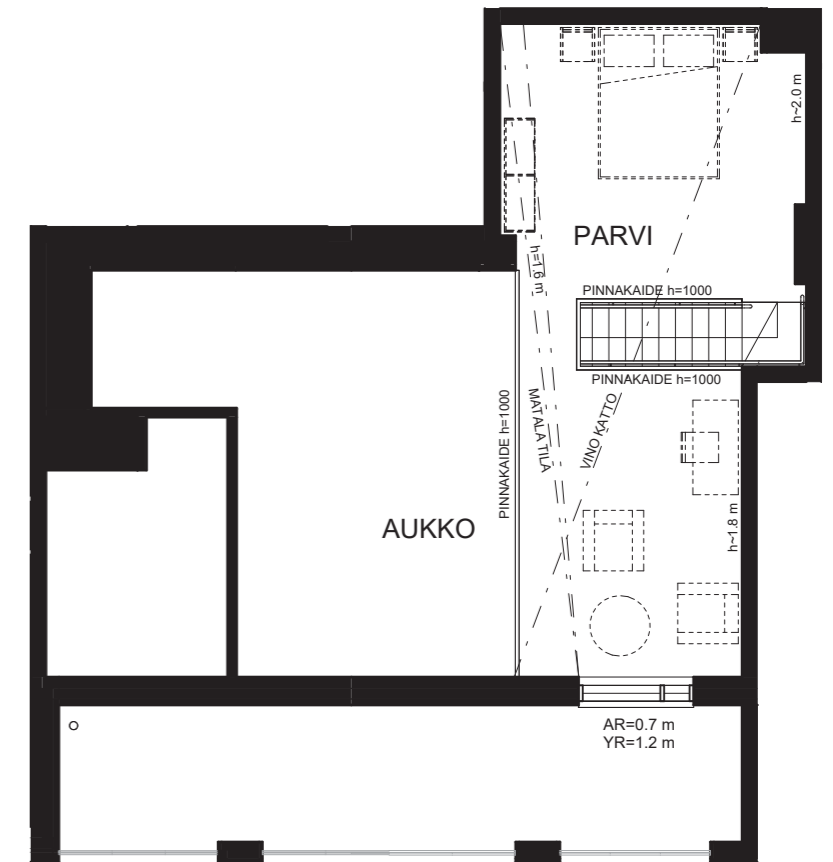
**3H+KT+PARVI 89,5 m<sup>2</sup>**

F57 2. krs 63,0 m<sup>2</sup>  
3. krs 26,5 m<sup>2</sup>



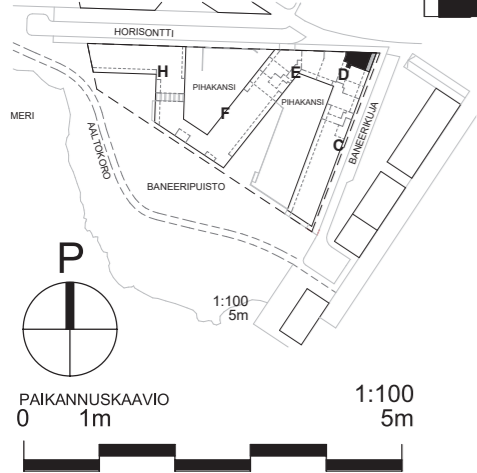
Alakerta

Yläkerta



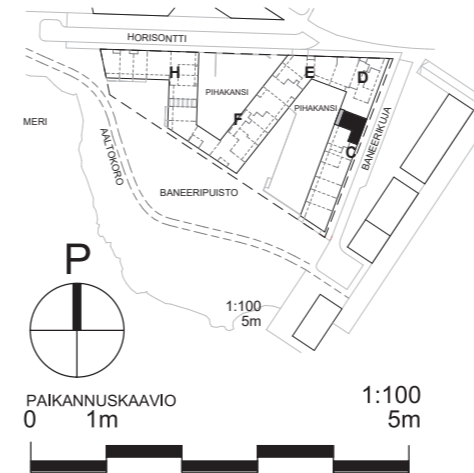
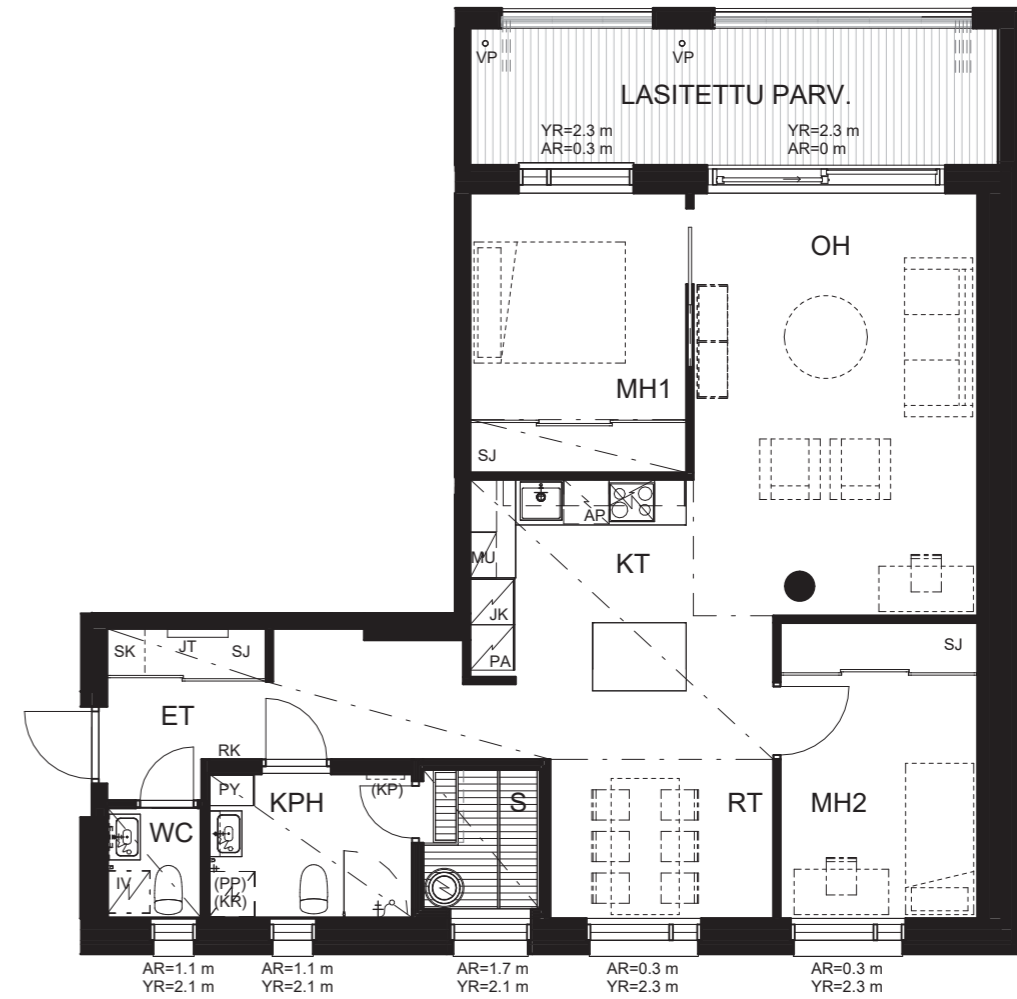
**3H+KT 86 m<sup>2</sup>**

D31 4. krs 53,0 m<sup>2</sup>  
5. krs 33,0 m<sup>2</sup>



**3H+KT+S 82,5 m<sup>2</sup>**

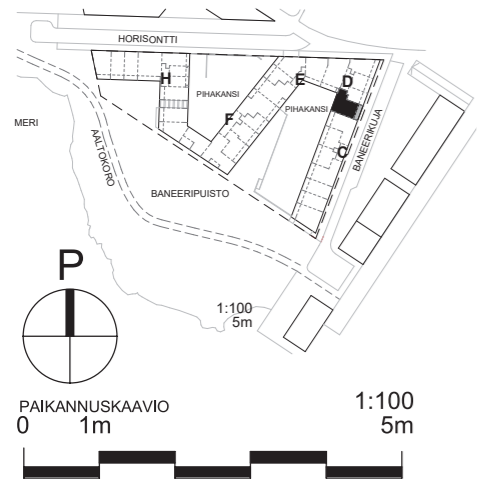
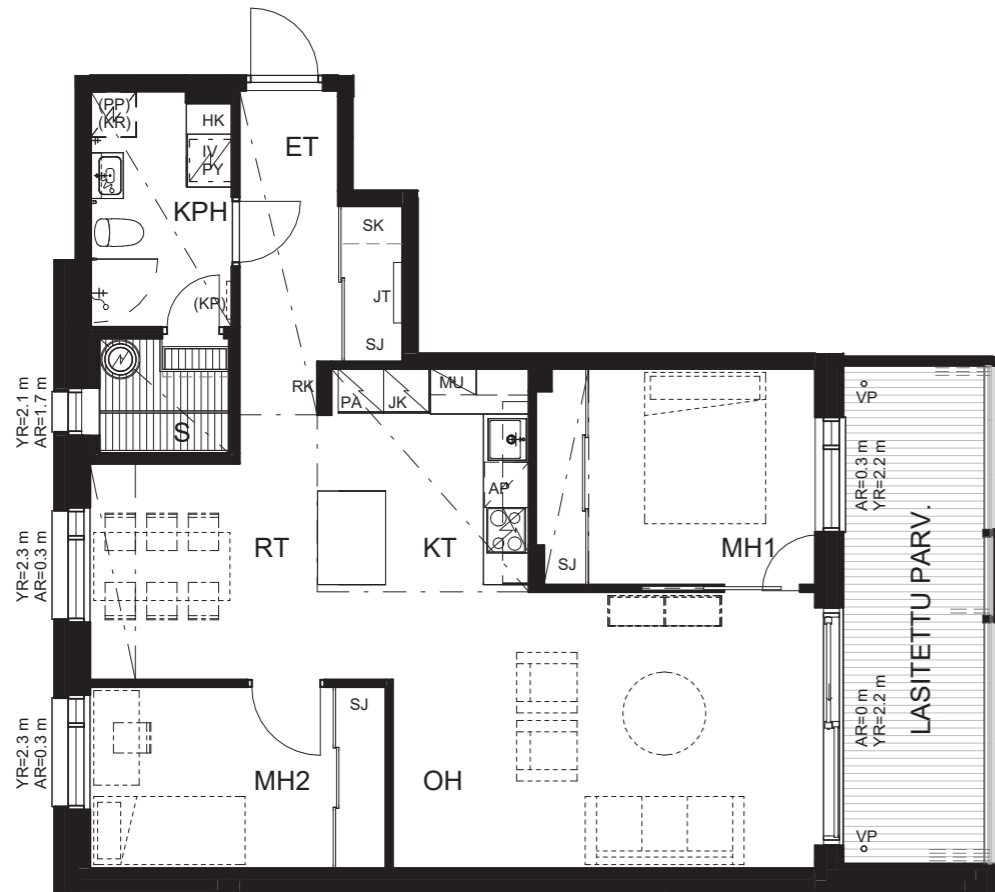
C10 2. krs



### 3H+KT+S 77 m<sup>2</sup>

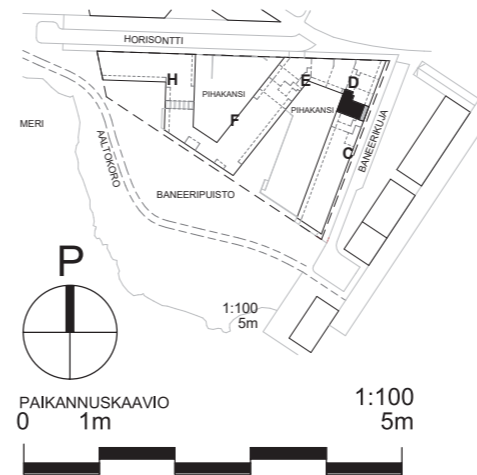
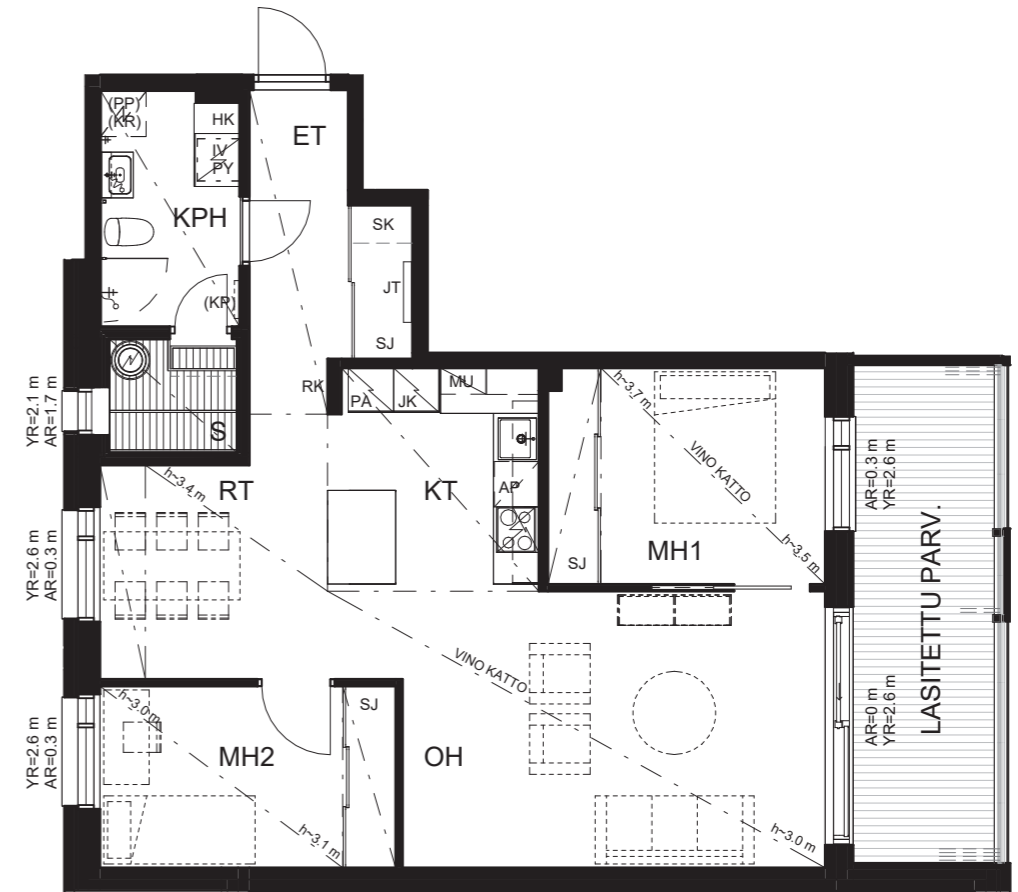
D24 2. krs

D29 3. krs



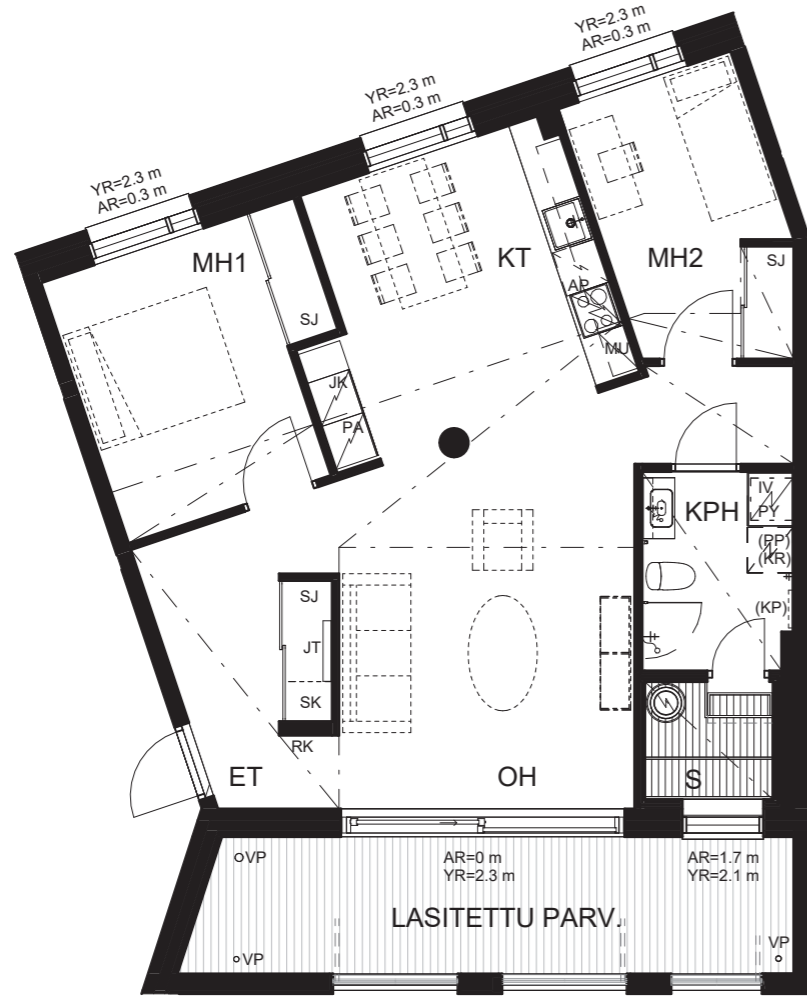
### 3H+KT+S 77 m<sup>2</sup>

D34 4. krs



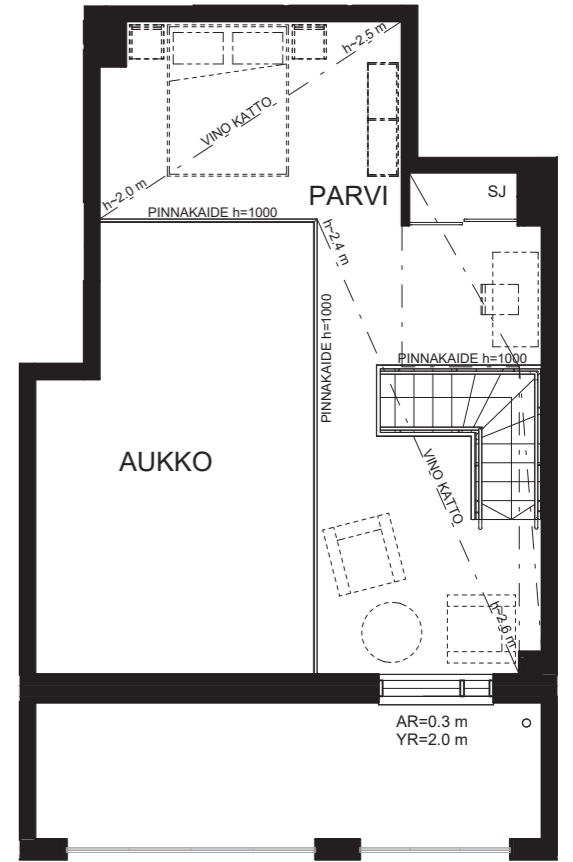
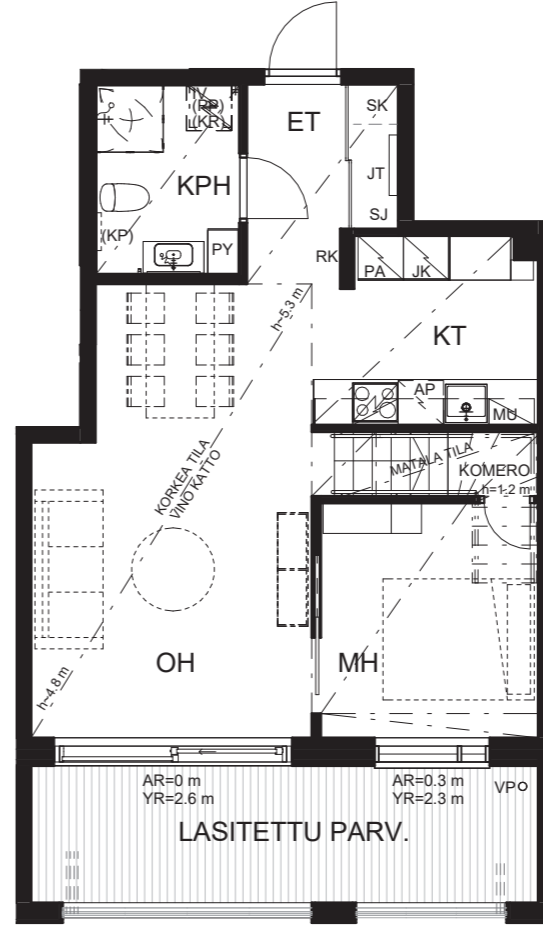
**3H+KT+S 76 m<sup>2</sup>**

- E37 1. krs
- E41 2. krs
- E45 3. krs



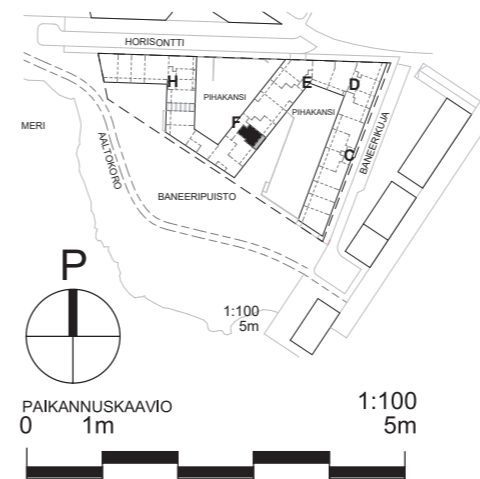
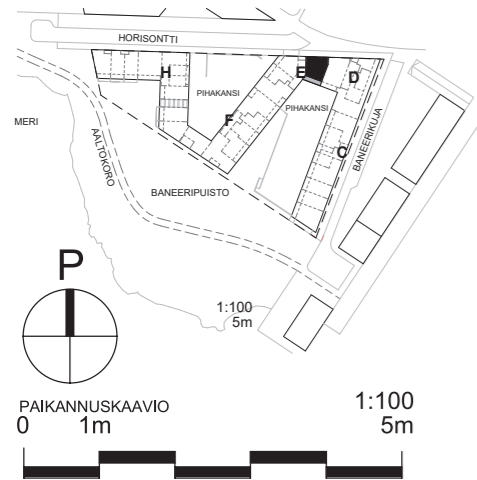
**2H+KT+PARVI 76 m<sup>2</sup>**

- F56 2. krs 46,5 m<sup>2</sup>
- 3. krs 29,5 m<sup>2</sup>



Alakerta

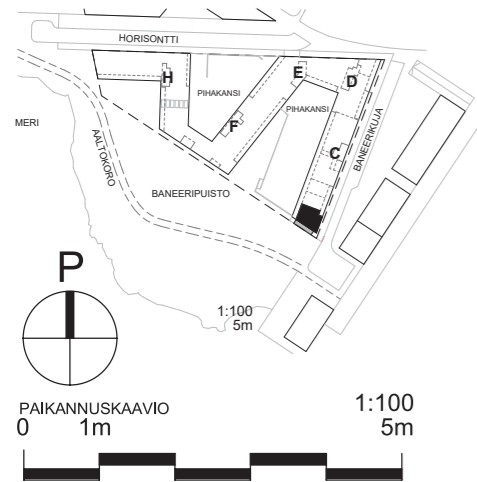
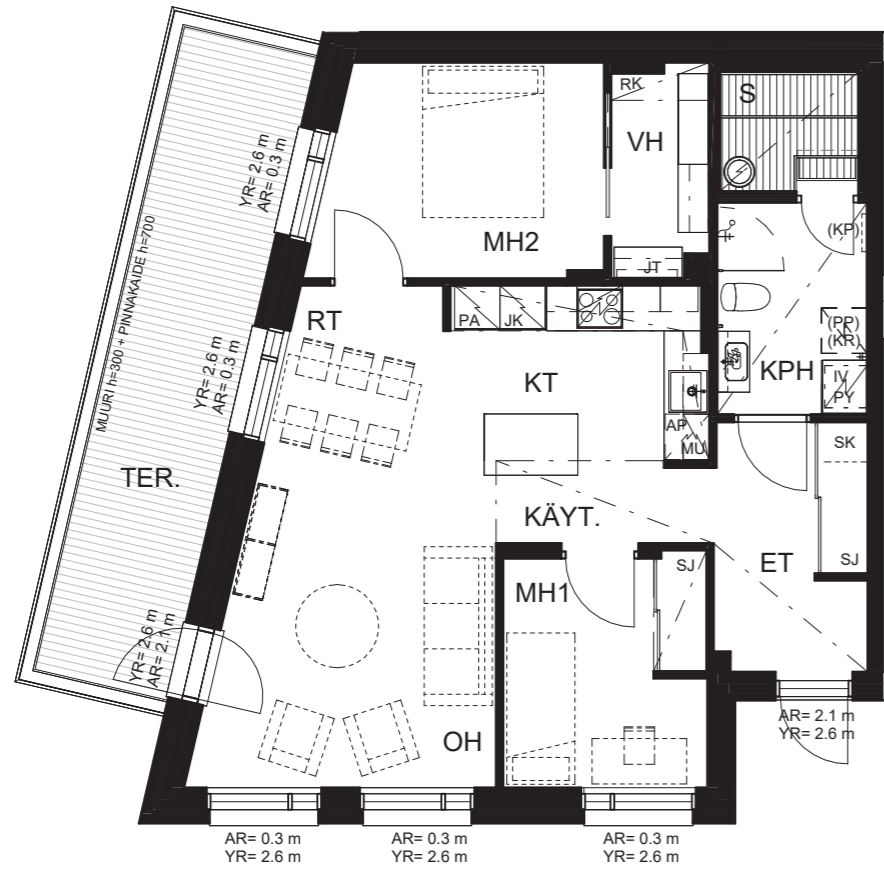
Yläkerta



Huoneistopohjat 1:100

# 3H+KT+S 71,5 m<sup>2</sup>

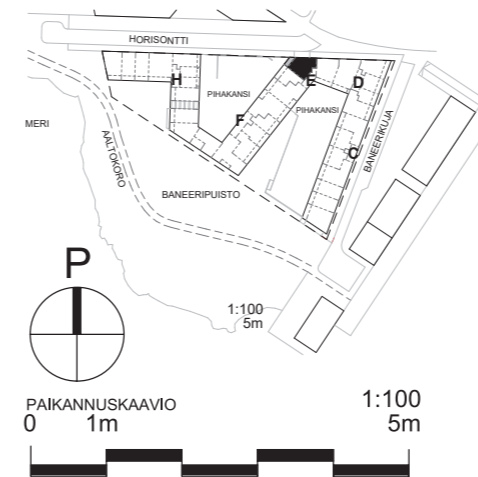
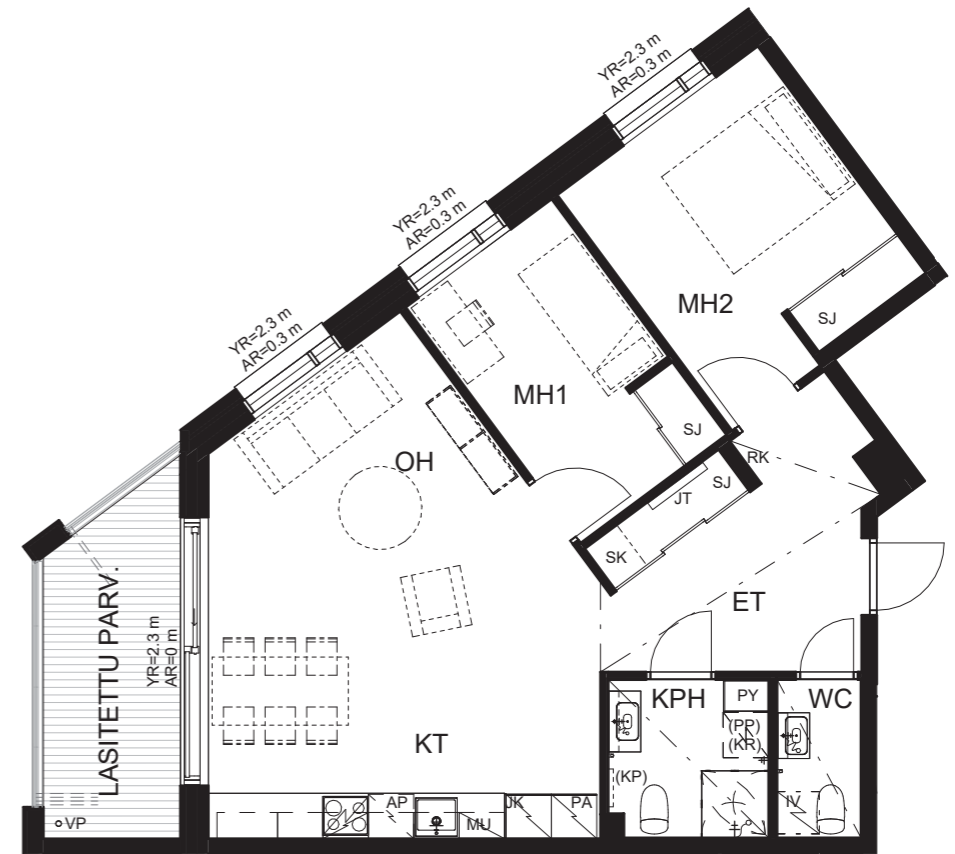
A1 1. krs



Huoneistopohjat 1:100

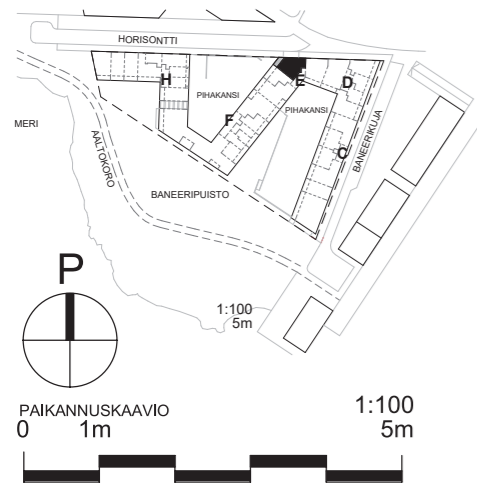
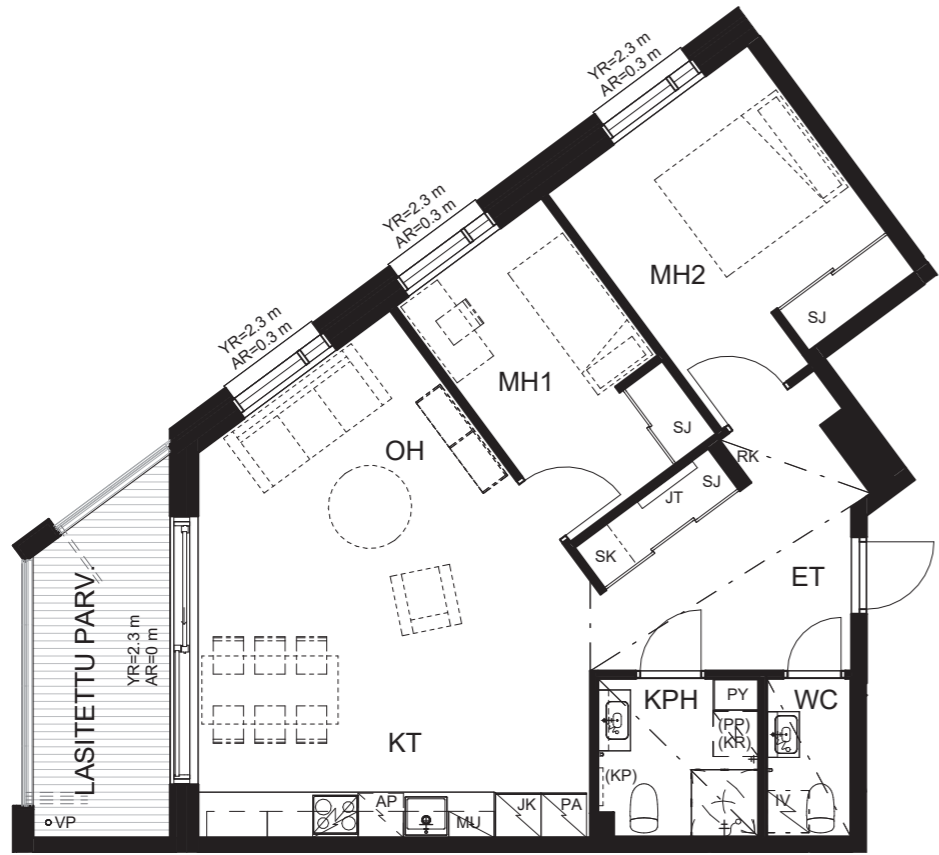
# 3H+KT 70 m<sup>2</sup>

E40 2. krs



# 3H+KT 69,5 m<sup>2</sup>

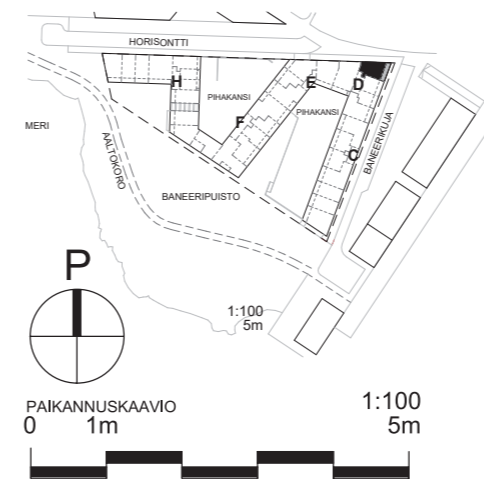
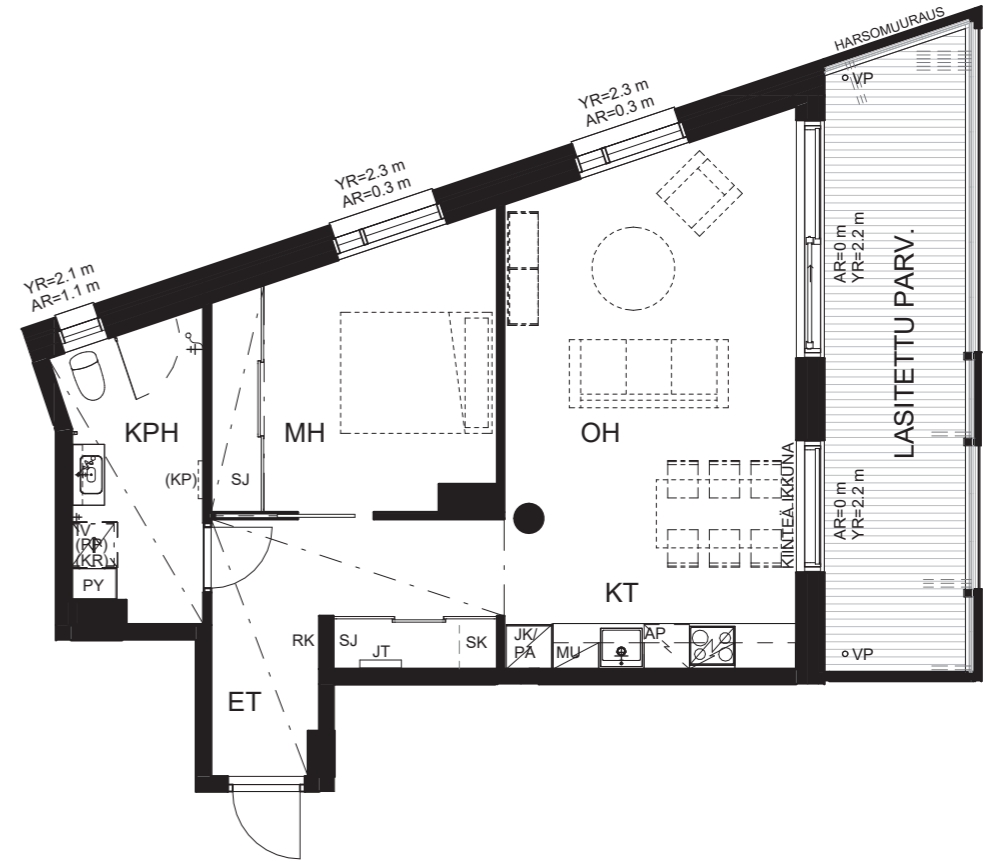
E44 3. krs



# 2H+KT 56 m<sup>2</sup>

D21 2. krs

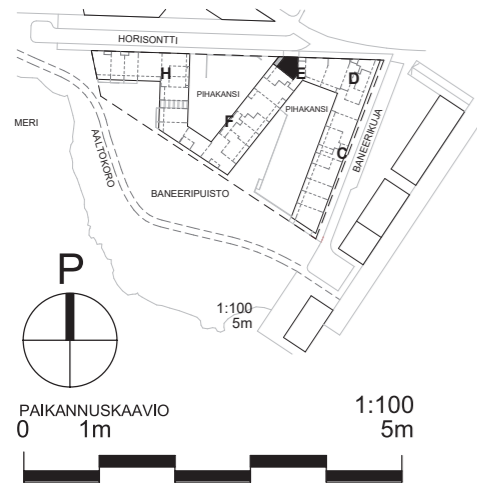
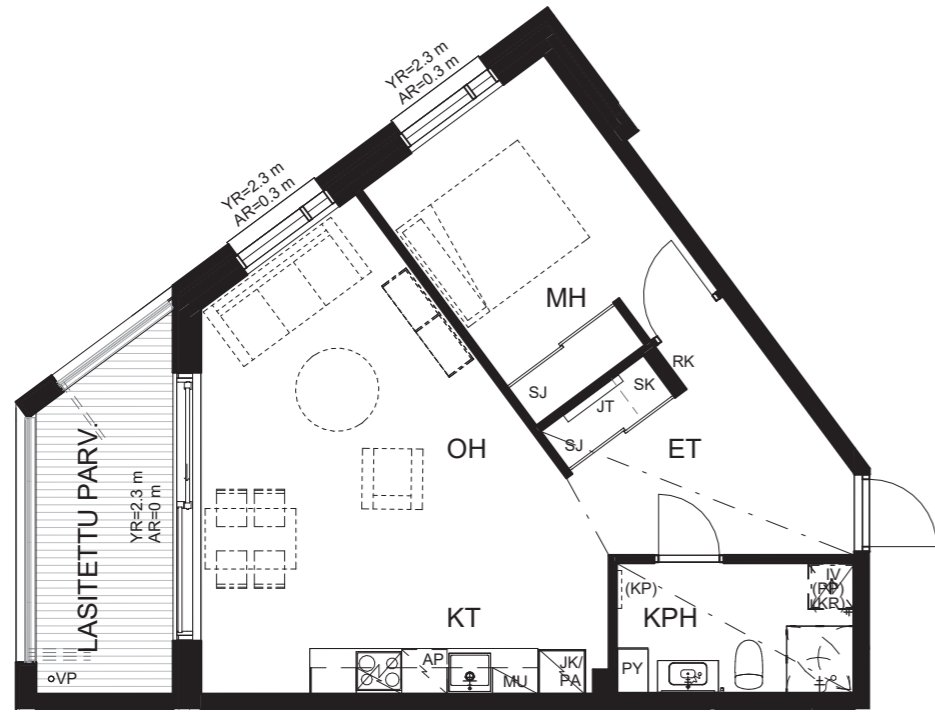
D26 3. krs





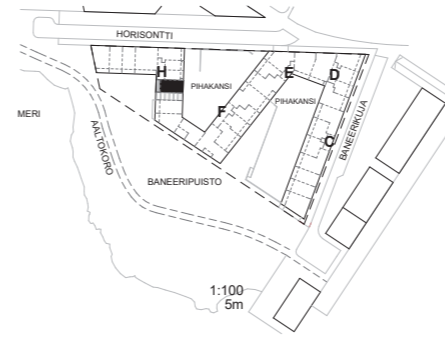
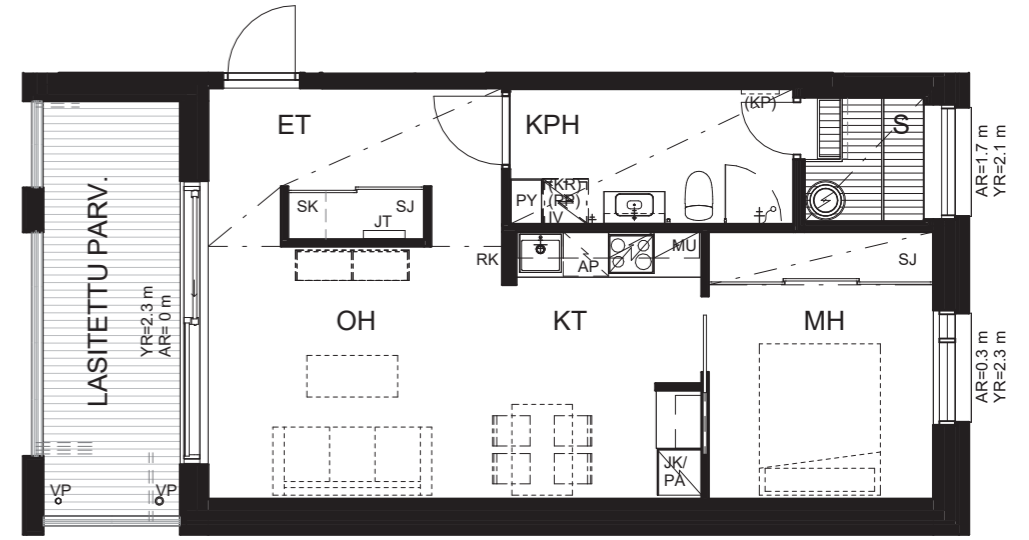
# 2H+KT 54 m<sup>2</sup>

E36 1. krs



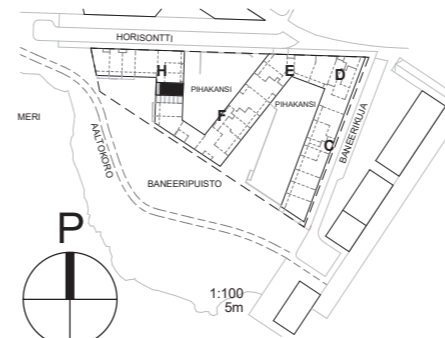
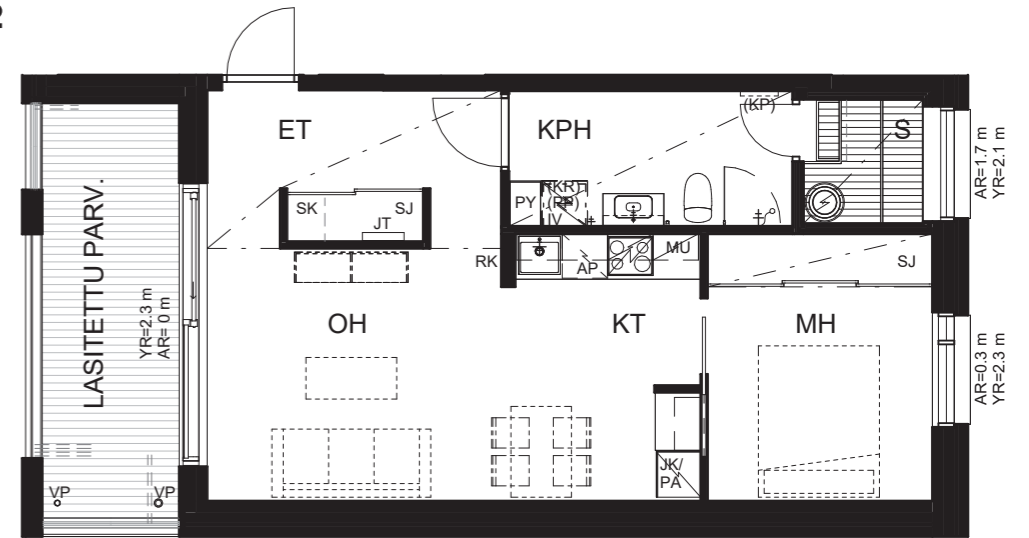
# 2H+KT+S 52 m<sup>2</sup>

H72 2. krs



# 2H+KT+S 52 m<sup>2</sup>

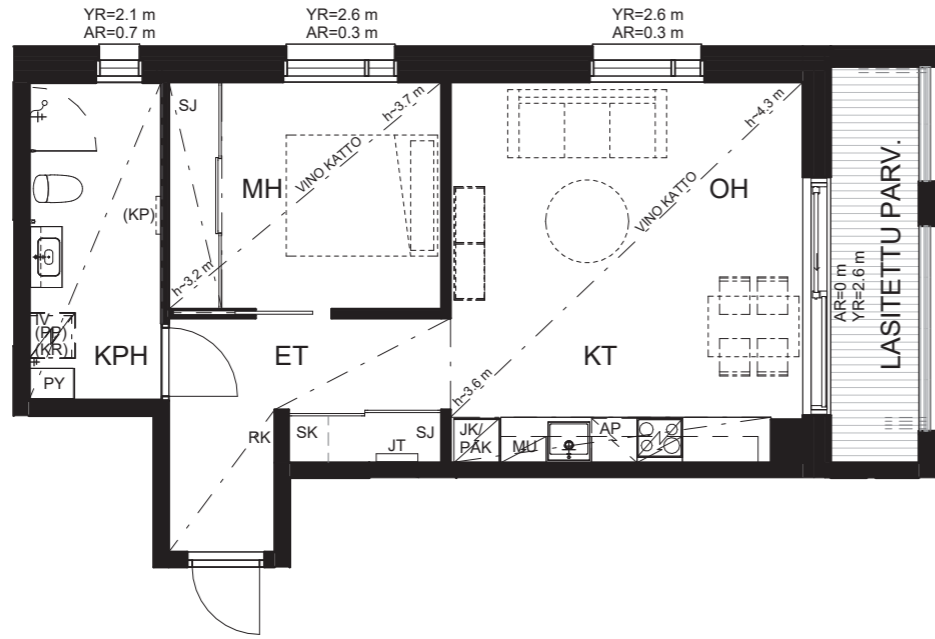
H67 1. krs



Huoneistopohjat 1:100

# 2H+KT 51,5 m<sup>2</sup>

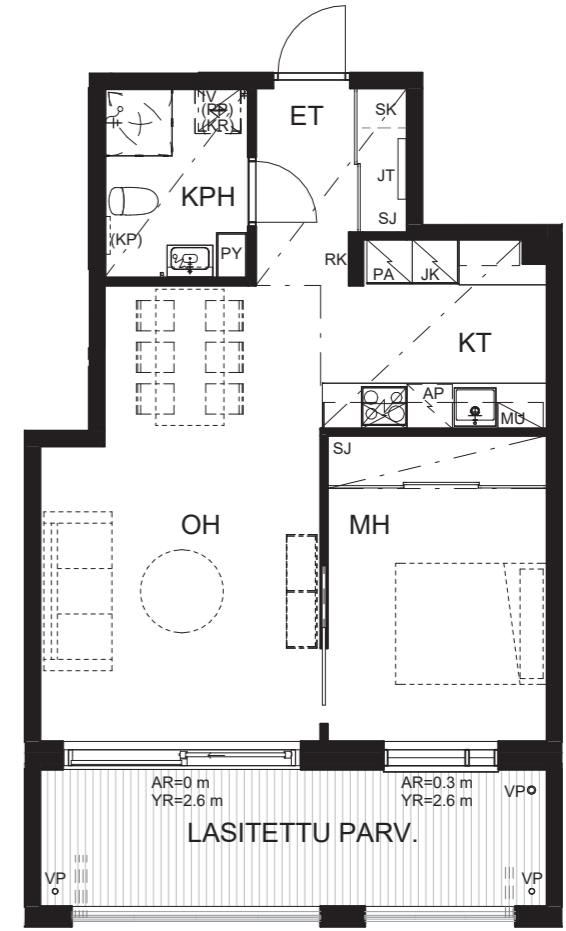
H73 3. krs



Huoneistopohjat 1:100

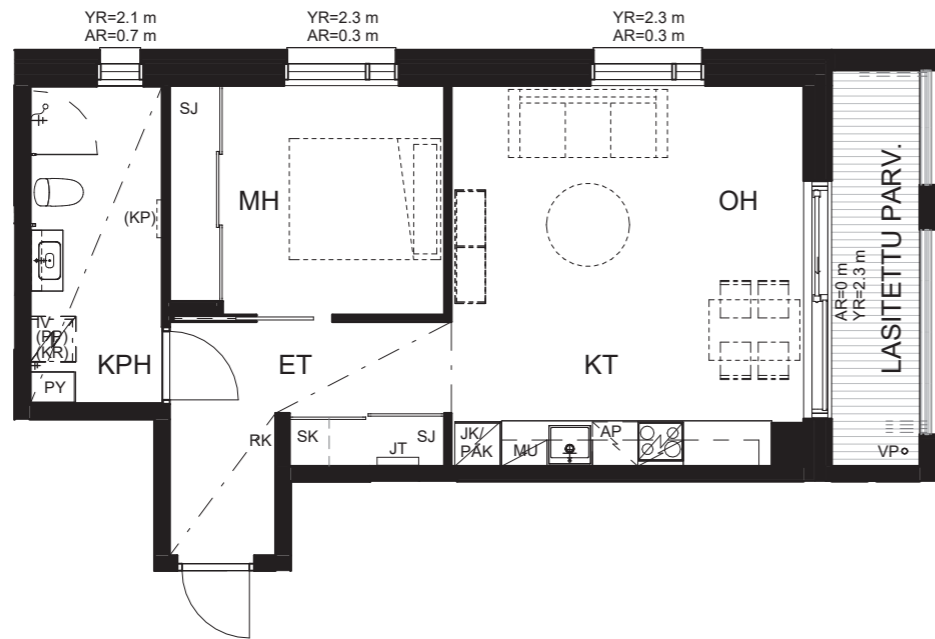
# 2H+KT 50 m<sup>2</sup>

F51 1. KRS



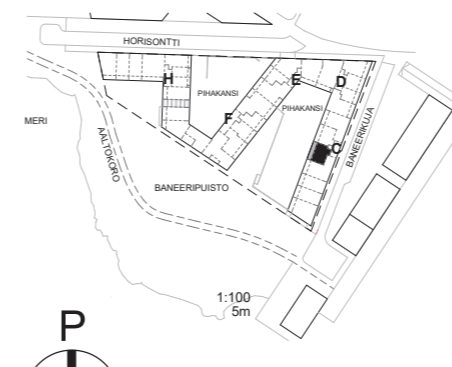
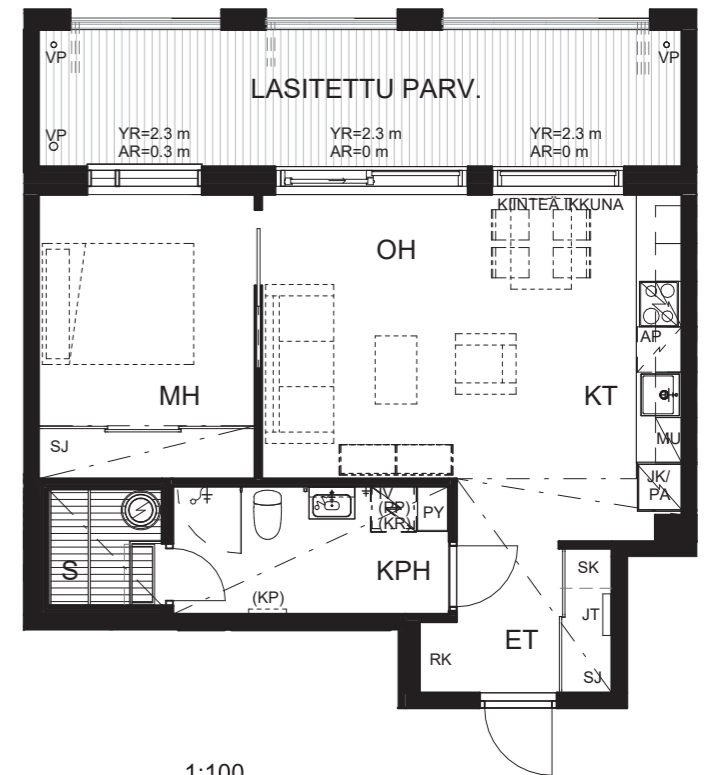
# 2H+KT 51,5 m<sup>2</sup>

H69 2. krs



# 2H+KT+S 49 m<sup>2</sup>

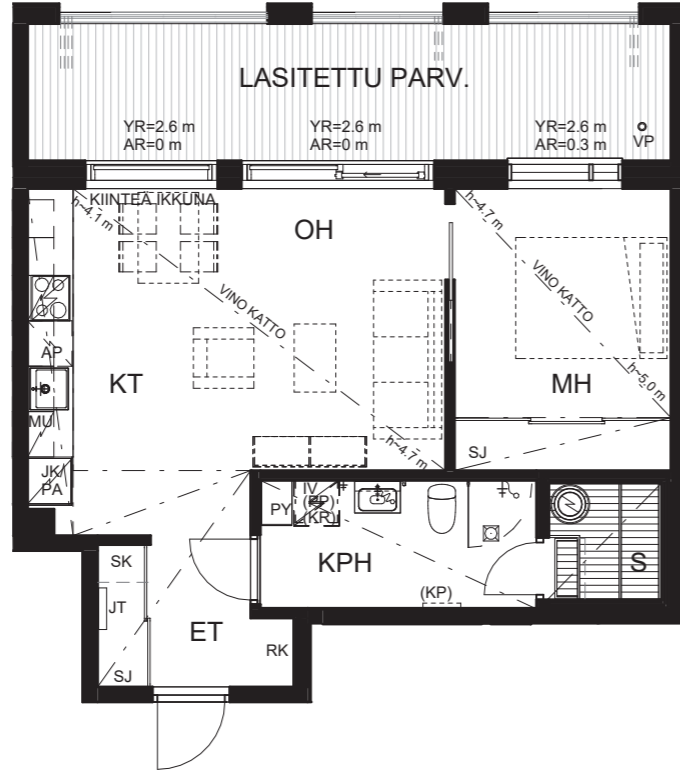
C12 3. KRS



Huoneistopohjat 1:100

# 2H+KT+S 49 m<sup>2</sup>

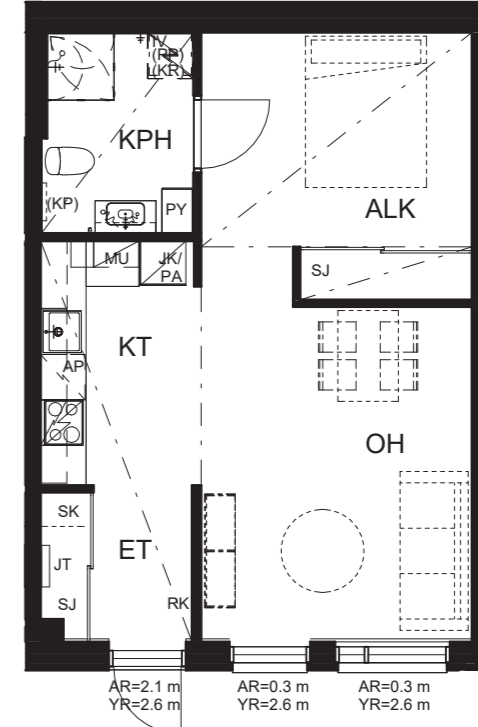
C17 4. krs



Huoneistopohjat 1:100

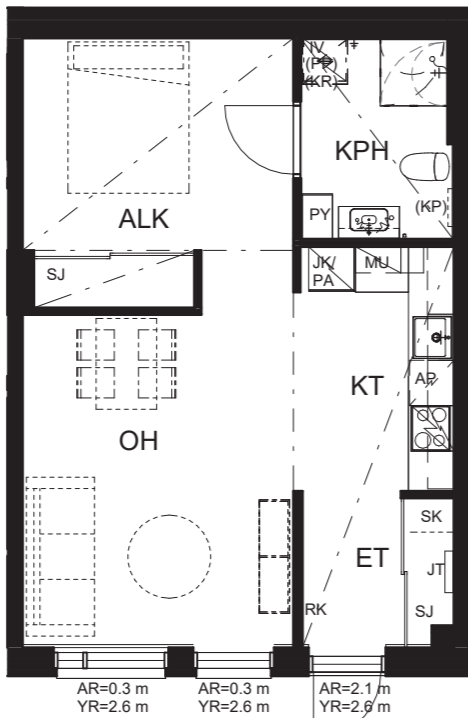
# 1H+KT 45,5 m<sup>2</sup>

A3 1. krs



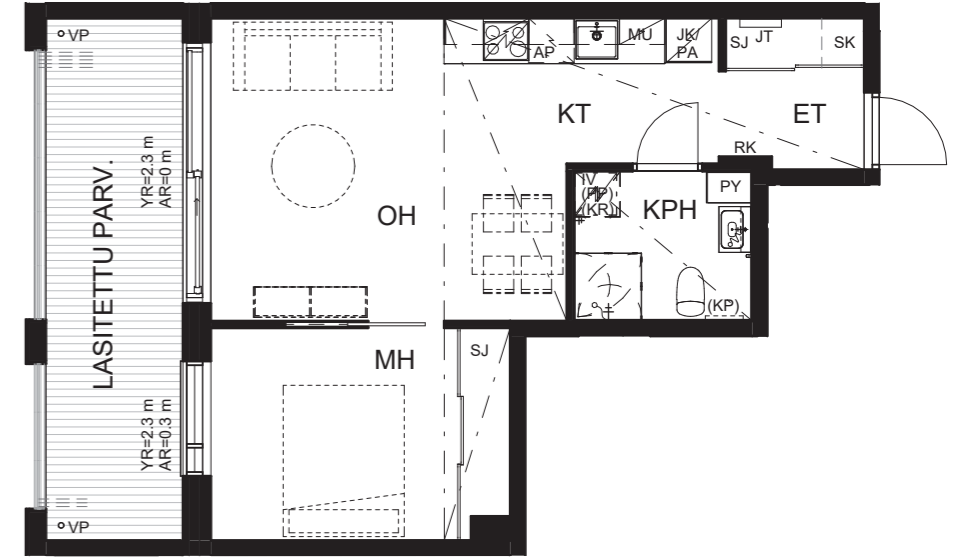
# 1H+KT 45,5 m<sup>2</sup>

A2 1. krs



# 2H+KT 43 m<sup>2</sup>

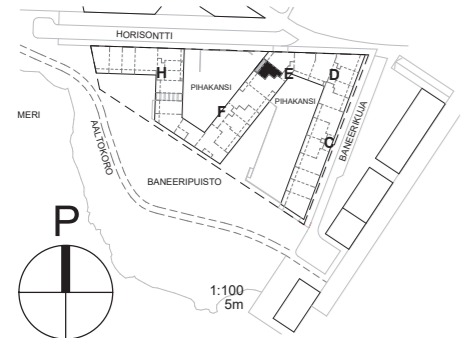
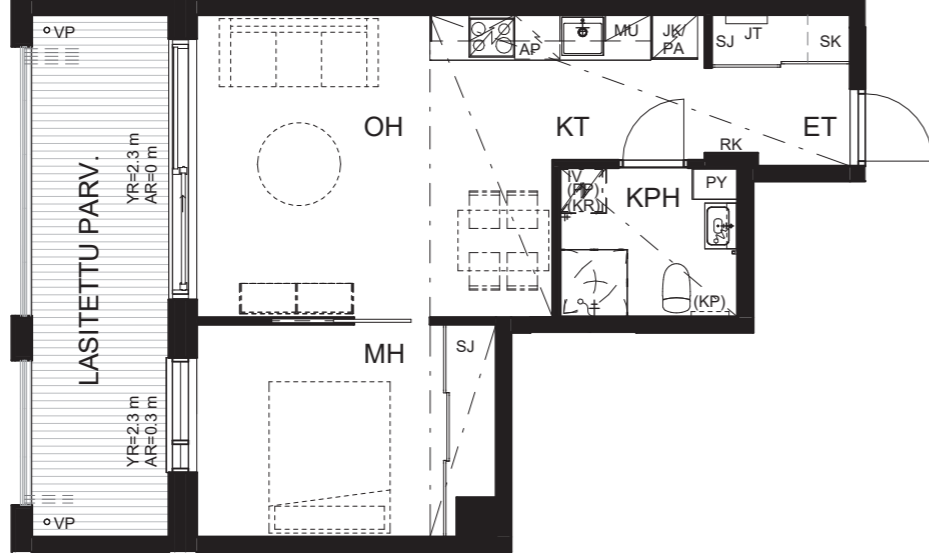
E35 1. krs



Huoneistopohjat 1:100

**2H+KT 43 m<sup>2</sup>**

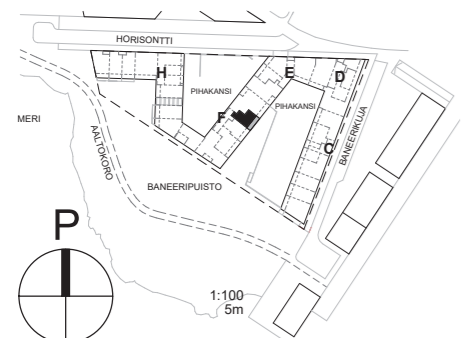
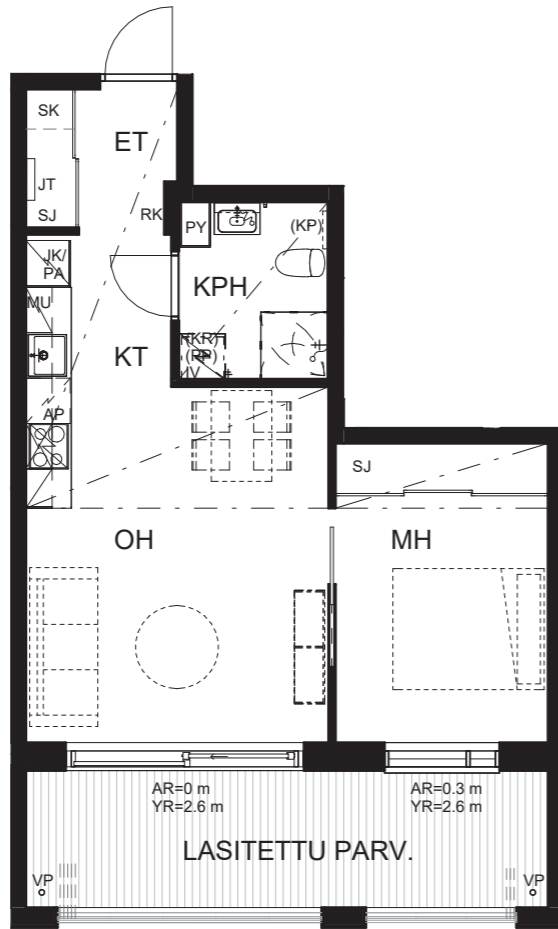
E39 2. krs



PAIKANNUSKAAVIO

**2H+KT 43 m<sup>2</sup>**

F50 1. krs



PAIKANNUSKAAVIO

**38**

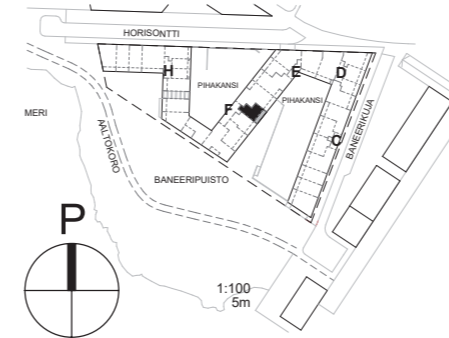
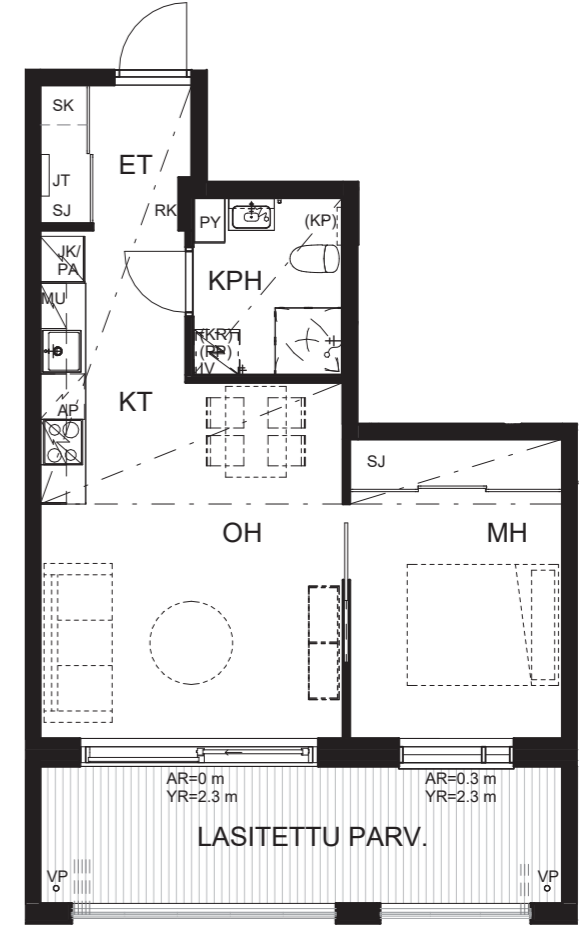
Pohjakuvaesite As. Oy Helsingin Maininki 4/2024



Huoneistopohjat 1:100

**2H+KT 43 m<sup>2</sup>**

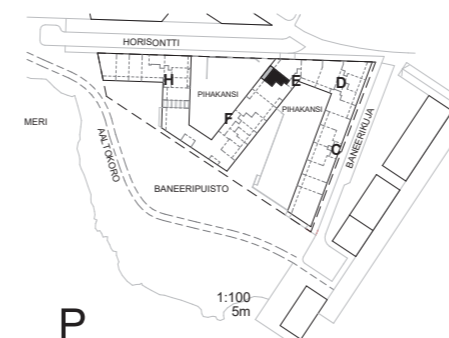
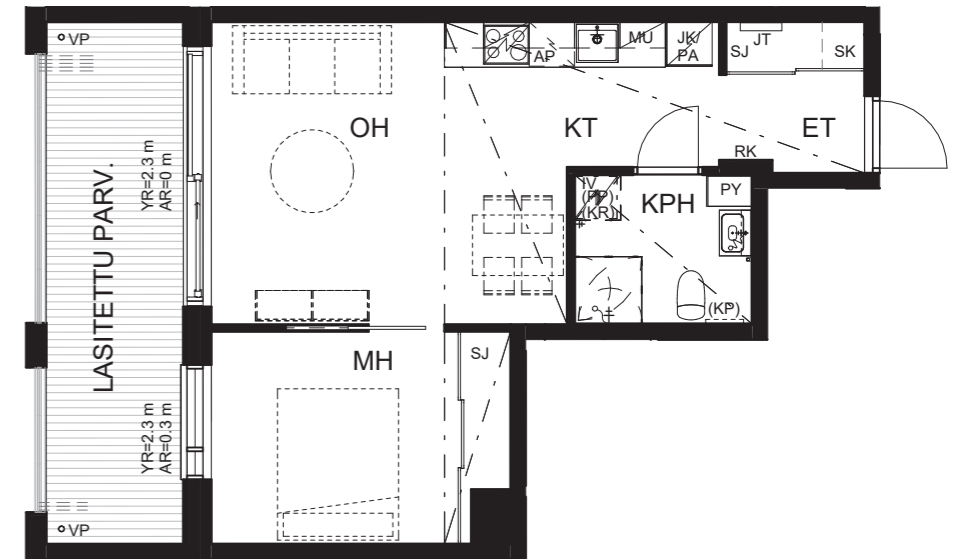
F55 2. krs



PAIKANNUSKAAVIO

**2H+KT 42,5 m<sup>2</sup>**

E43 3. krs



PAIKANNUSKAAVIO



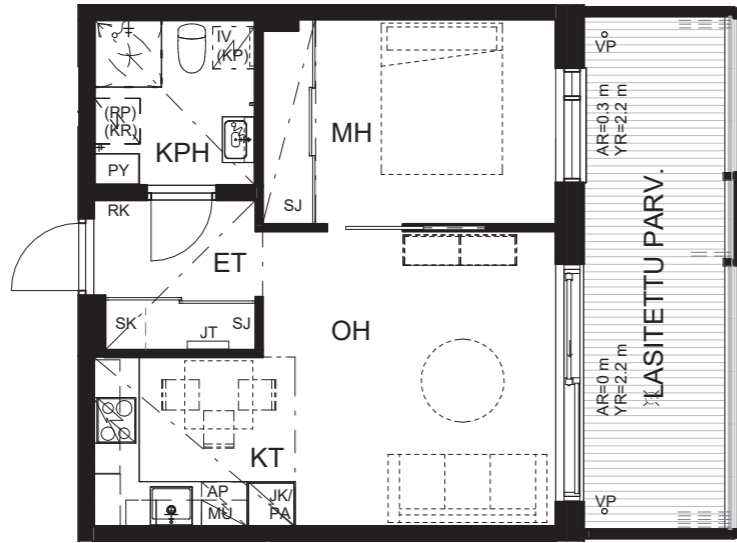
Pohjakuvaesite As. Oy Helsingin Maininki 4/2024

**39**

Huoneistopohjat 1:100

### 2H+KT 40,5 m<sup>2</sup>

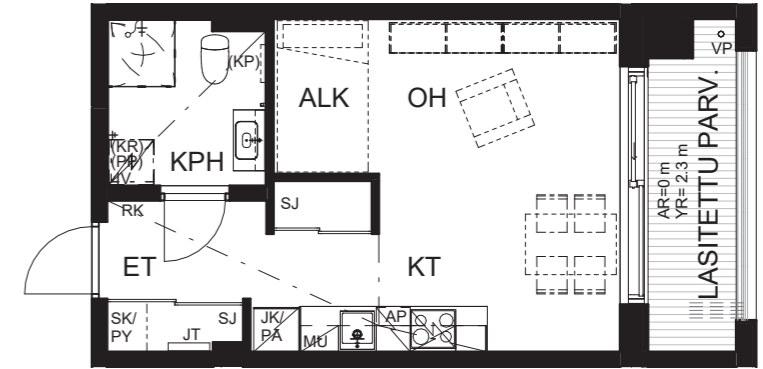
D22 2. krs  
D27 3. krs



Huoneistopohjat 1:100

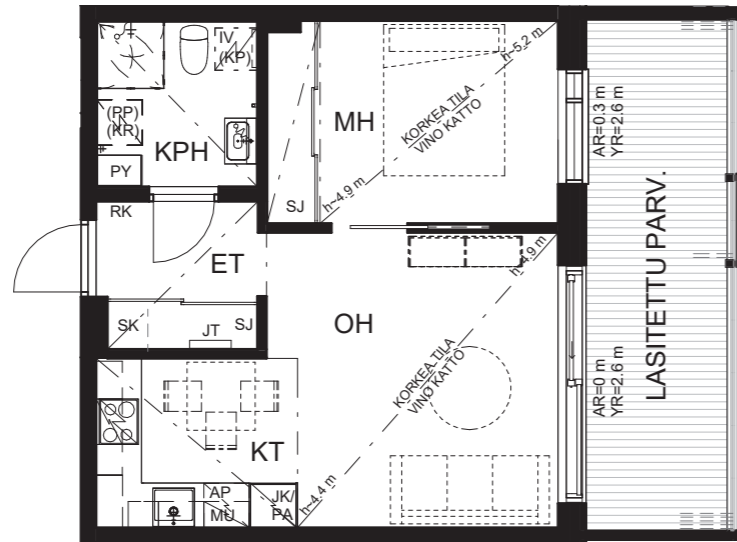
### 1H+KT 29,5 m<sup>2</sup>

H65 1. krs



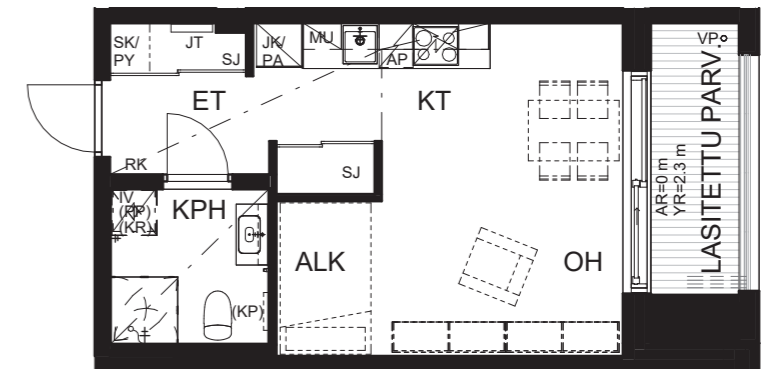
### 2H+KT 40,5 m<sup>2</sup>

D32 4. krs



### 1H+KT 29,5 m<sup>2</sup>

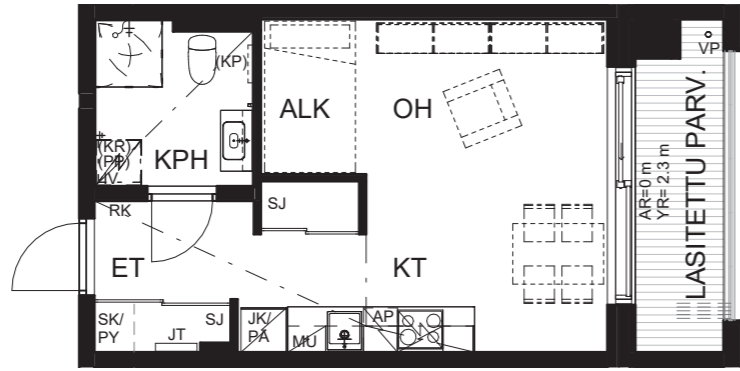
H66 1. krs



Huoneistopohjat 1:100

# 1H+KT 29,5 m<sup>2</sup>

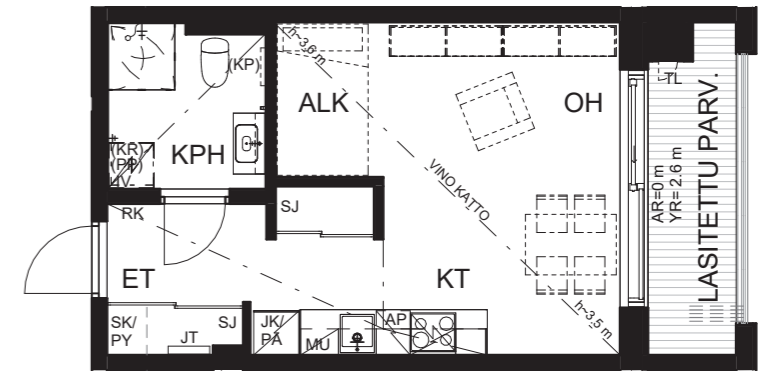
H70 2. krs



Huoneistopohjat 1:100

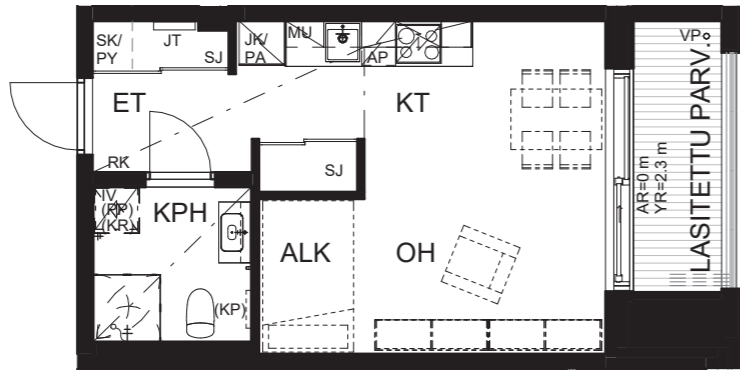
# 1H+KT 29,5 m<sup>2</sup>

H74 3. krs



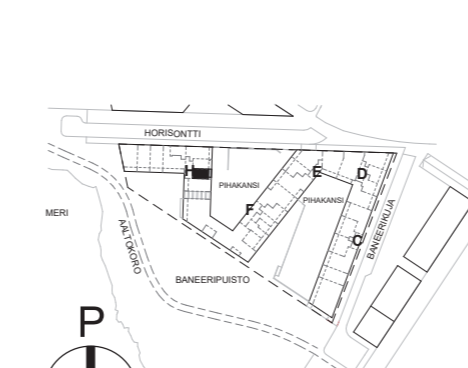
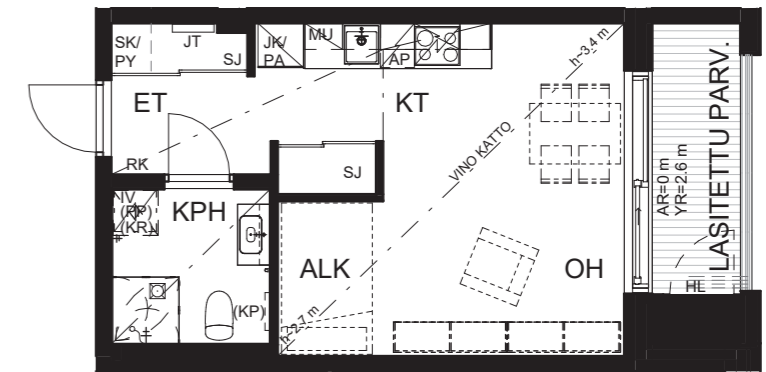
# 1H+KT 29,5 m<sup>2</sup>

H71 2. krs

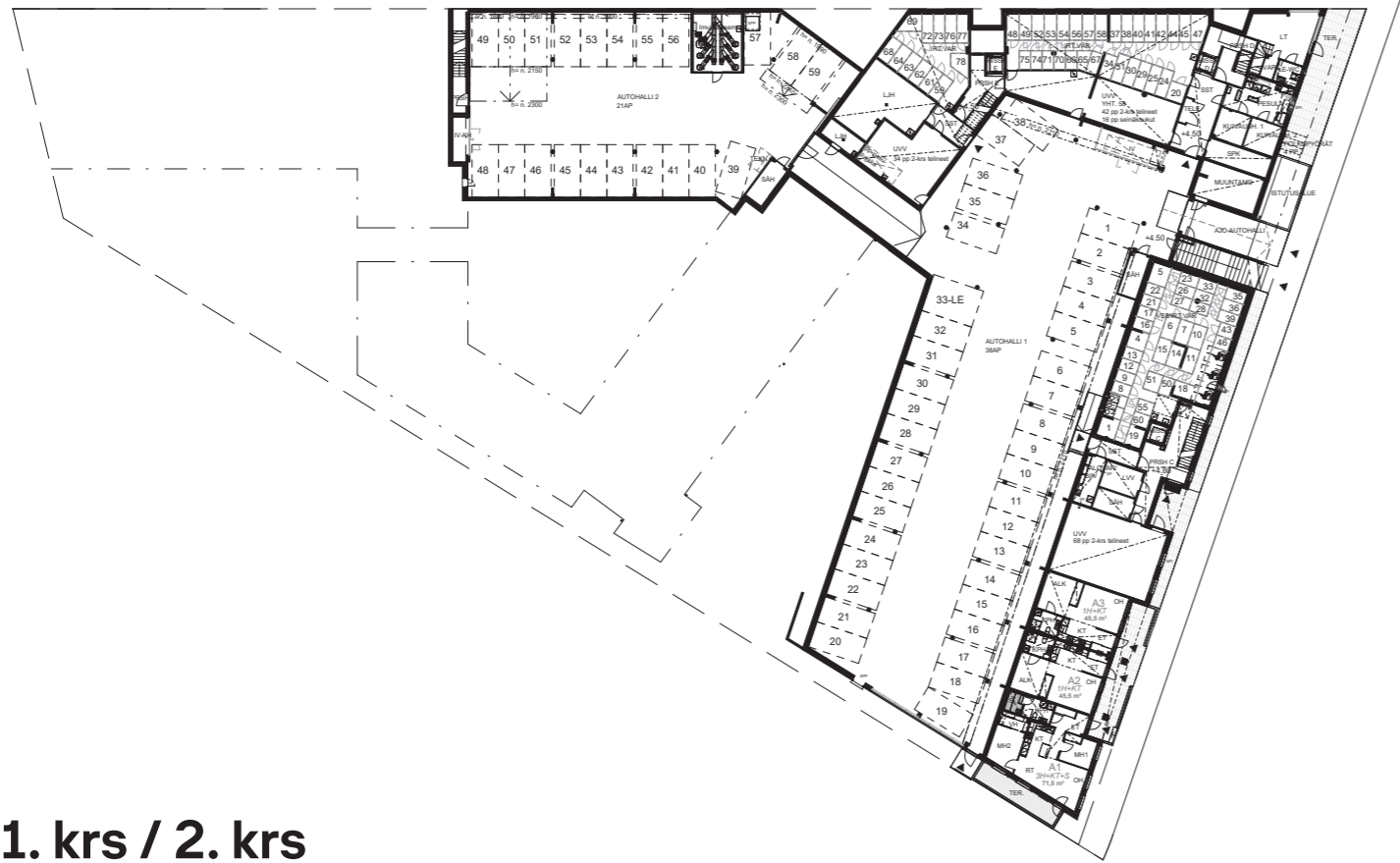


# 1H+KT 29,5 m<sup>2</sup>

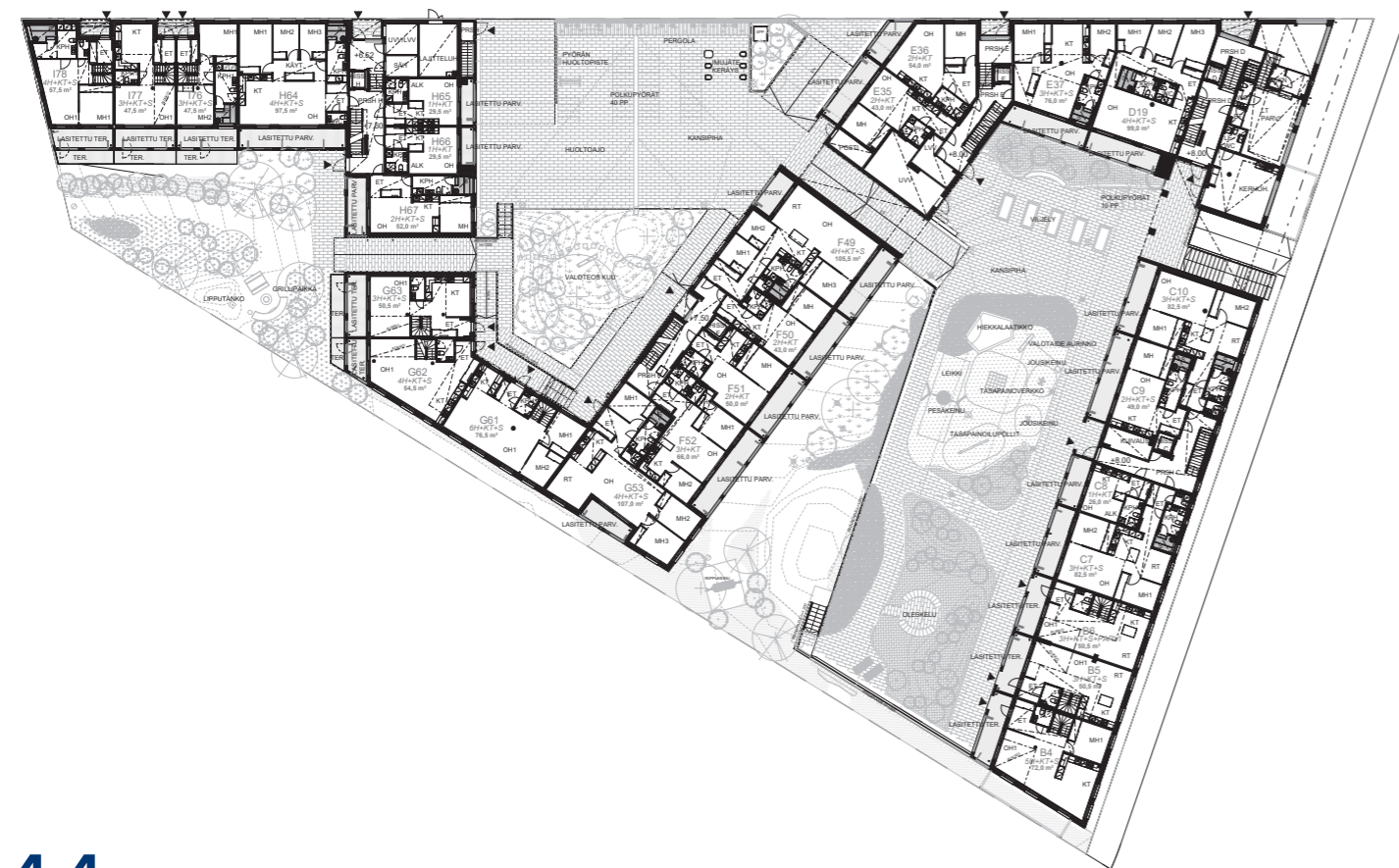
H75 3. krs



Kellari / 1. krs



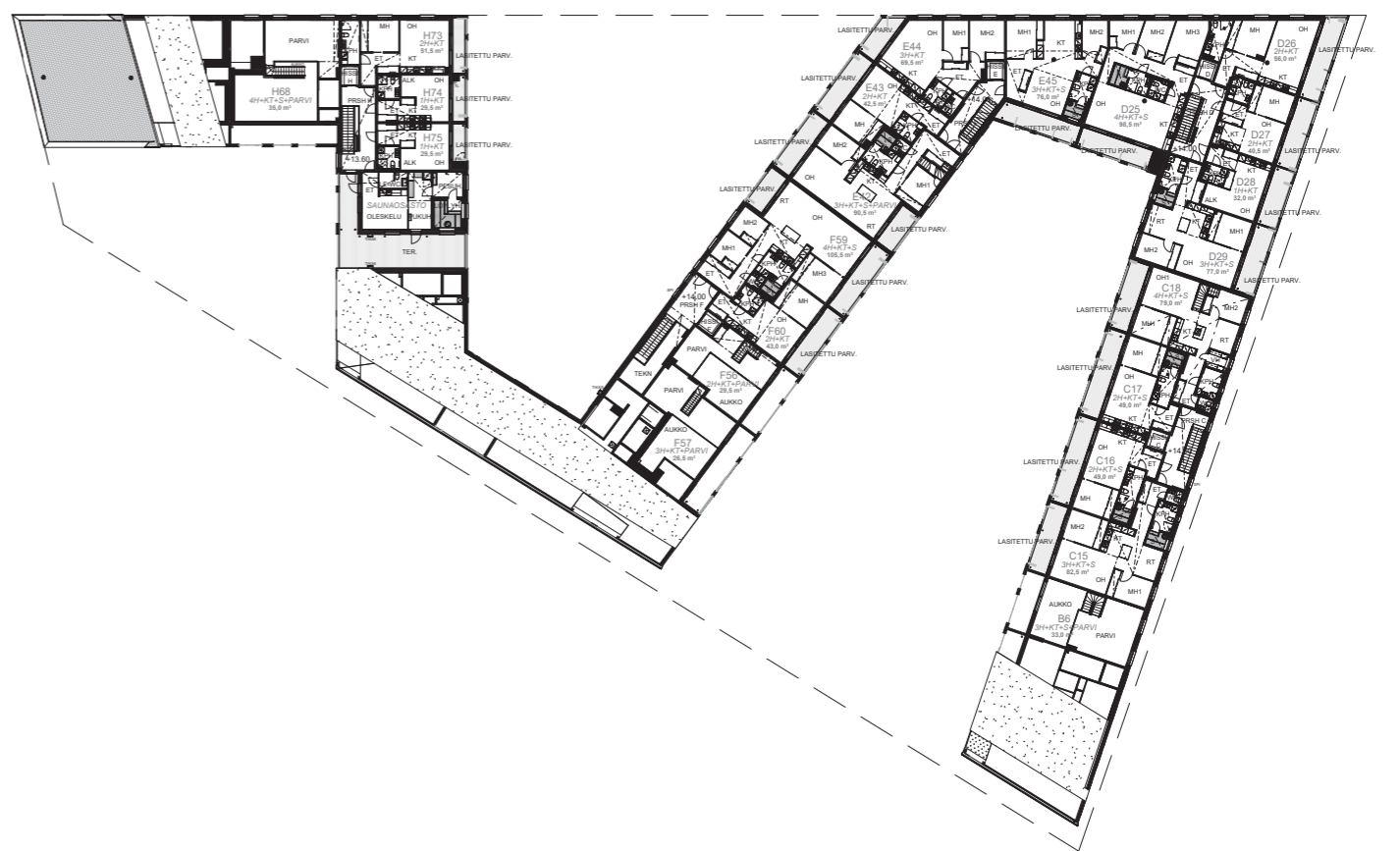
1. krs / 2. krs



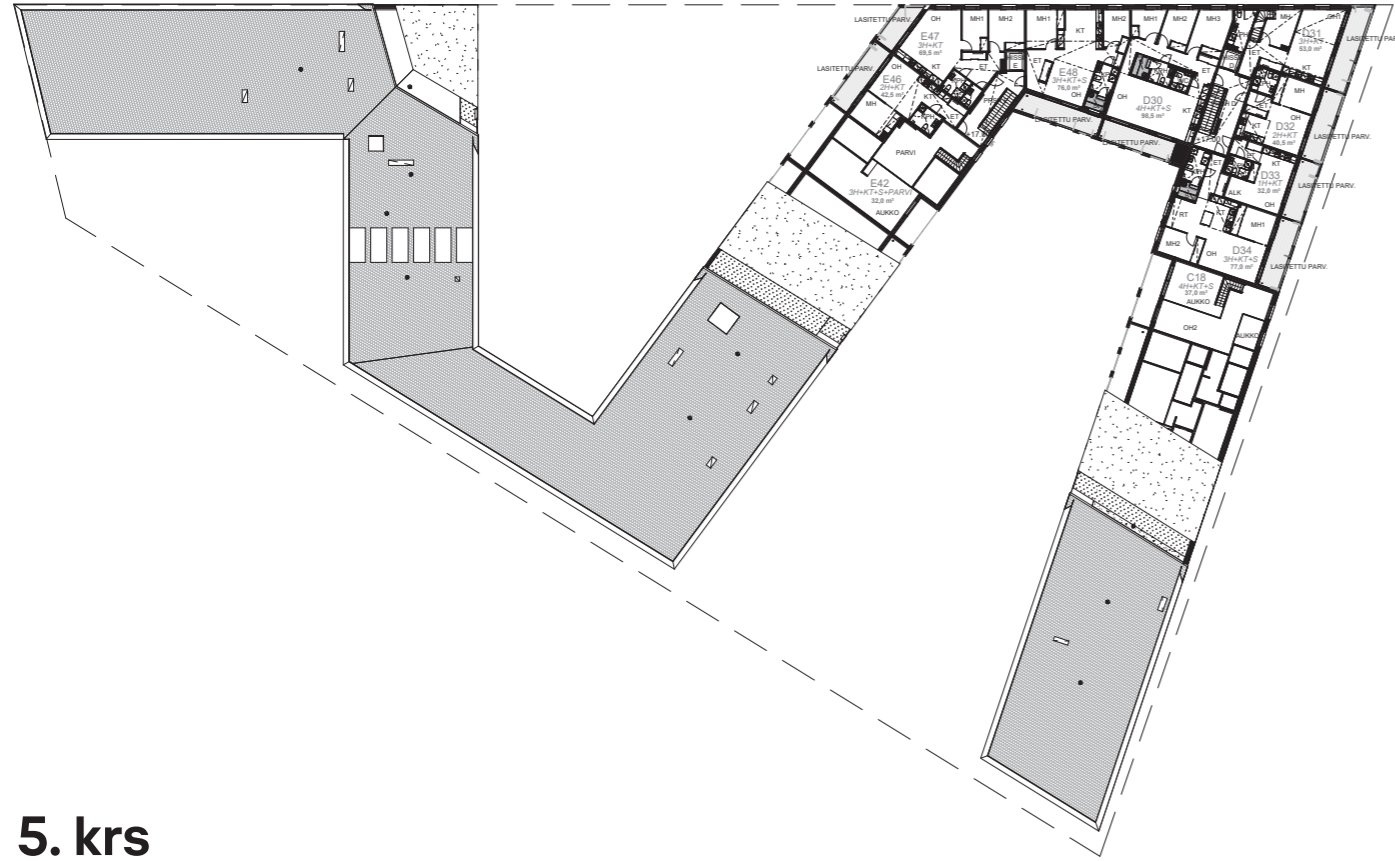
2. krs / 3. krs



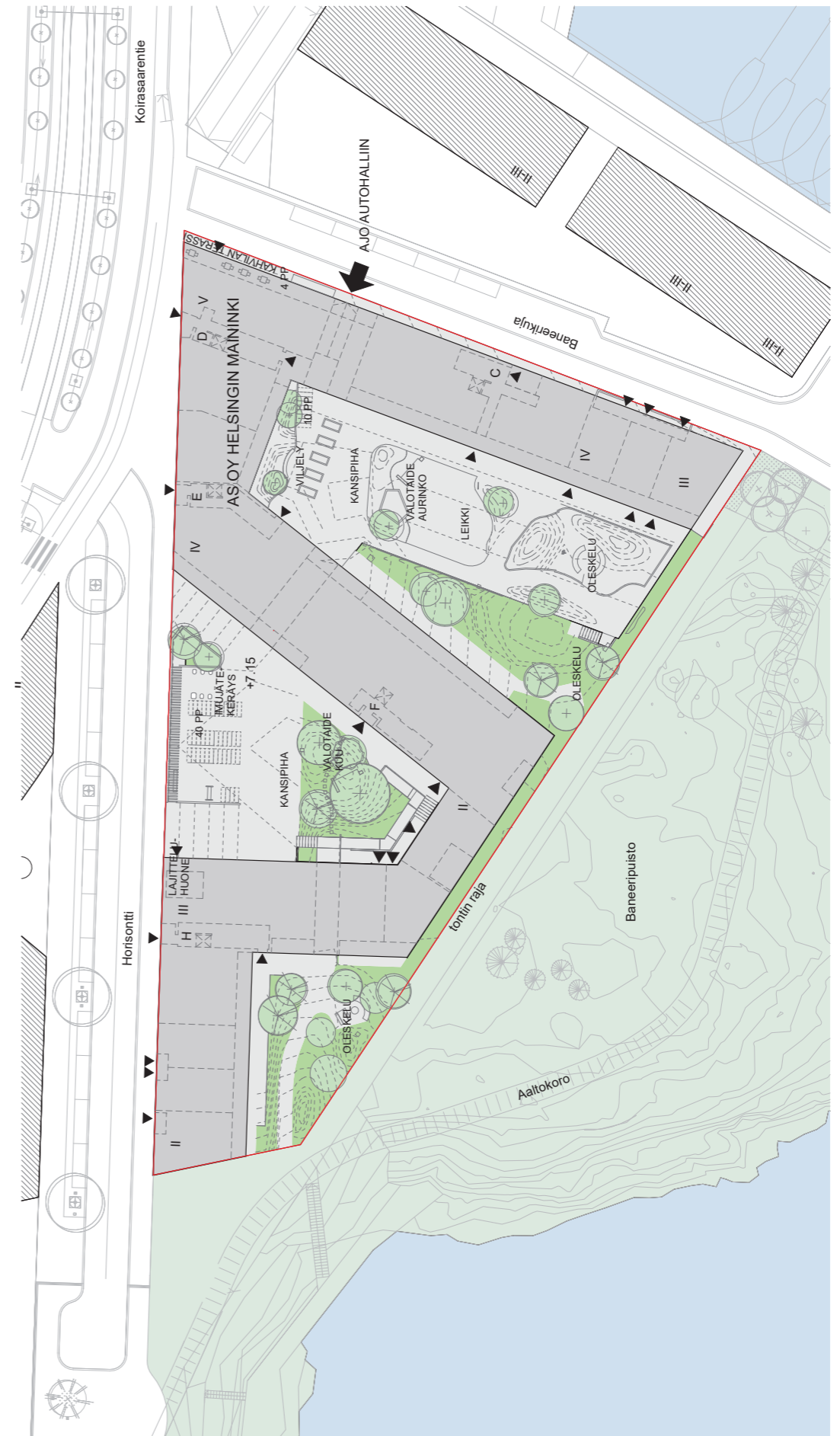
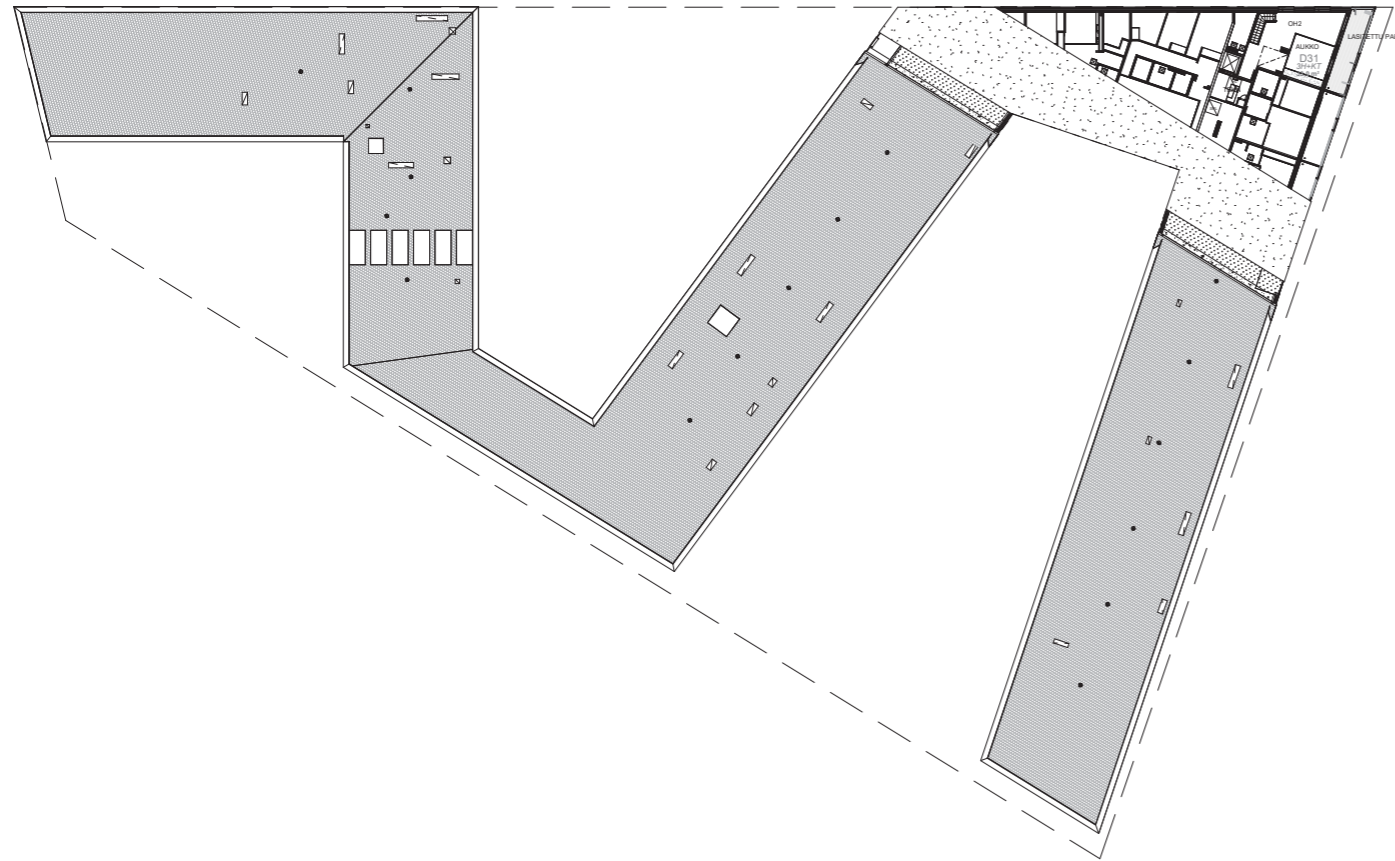
3. krs / 4. krs



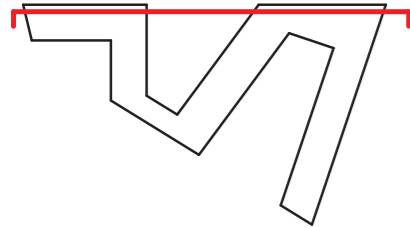
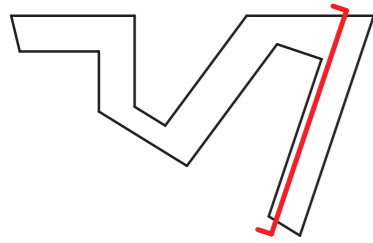
4. krs / 5. krs



5. krs







Rakentaja pidättää mahdollisuuden muuttaa tämän tiedotteen tietoja ja piirustuksia. Ostajan on tutustuttava myyntiasiakirjoihin ja vahvistettuihin suunnitelmiin kauppakirjan allekirjoittamisen yhteydessä. Tämä tiedote perustuu tilanteeseen 05/2022. Asuntojen markkinoinnissa annettavista tiedoista annetun asetuksen nro 130/2001 mukainen esite on nähtävissä esittelyssä. Rakennustapaselostuksen saat asunnon myyjältä tai rakentajalta.

# Kestää elämän.

**SKANSKA**

**Skanska Kodit**  
skanska.fi/kodit  
skanska.fi/otayhteysta  
Asuntomyynti p. 0800 162 162

**Skanska Talonrakennus Oy**  
Nauvontie 18, 00280 Helsinki



Painotuote  
4041 0955

Ympäristömerkitty painotuote, Grano Oy (ISO14001-ympäristösertifiointi), 4/2024, painosmäärä 150 kpl